

Active Contracts /1	Wed Mar 06	Change	Tue Mar 05	Mon Mar 04	Fri Mar 01	Thu Feb 29	Wed Feb 28	Average Prior 5 Days
GRAIN FUTURES								
CORN May 2024 (\$/bu)	\$4.2875	\$0.0250	\$4.2625	\$4.3000	\$4.2475	\$4.2950	\$4.2850	\$4.2780
WHEAT May 2024 (\$/bu)	\$5.3100	-\$0.2000	\$5.5100	\$5.6400	\$5.5775	\$5.7625	\$5.7475	\$5.6475
HARD RED WINTER WHEAT May 2024	\$5.5625	-\$0.1300	\$5.6925	\$5.8025	\$5.6450	\$5.8725	\$5.8100	\$5.7645
HARD RED SPRING WHEAT May 2024	\$6.4525	-\$0.1025	\$6.5550	\$6.5950	\$6.4375	\$6.5900	\$6.5600	\$6.5475
OATS May 2024 (\$/bu)	\$3.6200	-\$0.0650	\$3.6850	\$3.7175	\$3.7100	\$3.6850	\$3.6600	\$3.6915
ROUGH RICE May 2024 (\$/cwt)	\$18.105	-\$0.230	\$18.335	\$18.610	\$18.285	\$18.375	\$18.355	\$18.392
OILSEED FUTURES								
SOYBEANS May 2024 (\$/bu)	\$11.4825	-\$0.0075	\$11.4900	\$11.5500	\$11.5125	\$11.4075	\$11.4525	\$11.4825
SOYBEAN MEAL May 2024 (\$/short ton)	\$330.40	\$0.50	\$329.90	\$333.50	\$332.30	\$329.20	\$327.50	\$330.48
SOYBEAN OIL May 2024 (cents/lb)	45.32	0.28	45.04	45.17	45.16	45.21	45.19	45.15
CANOLA May 2024 (CAD/MT)	595.3	-0.7	596.0	590.8	593.7	591.0	591.1	592.5
LIVESTOCK FUTURES								
LIVE CATTLE April 2024 (\$/cwt)	\$187.25	-\$0.75	\$188.00	\$186.68	\$188.45	\$185.35	\$186.13	\$186.92
FEEDER CATTLE April 2024 (\$/cwt)	\$255.88	-\$1.30	\$257.18	\$255.75	\$258.00	\$253.73	\$255.10	\$255.95
LEAN HOGS April 2024 (\$/cwt)	\$85.00	-\$0.17	\$85.18	\$86.28	\$88.08	\$86.63	\$86.00	\$86.43
ENERGY FUTURES								
CRUDE OIL April 2024 (\$/barrel)	\$79.12	\$0.97	\$78.15	\$78.74	\$79.97	\$78.26	\$78.54	\$78.73
RBOB GASOLINE April 2024 (\$/gal)	\$2.5468	\$0.0140	\$2.5328	\$2.5857	\$2.6144	\$2.5810	\$2.5512	\$2.5730
ETHANOL April 2024 (\$/gal)	\$2.161	\$0.000	\$2.161	\$2.161	\$2.161	\$2.161	\$2.161	\$2.161
NEW YORK HARBOR ULSD April 2024	\$2.6612	\$0.0547	\$2.6065	\$2.6472	\$2.7042	\$2.6499	\$2.6260	\$2.6468
NATURAL GAS April 2024 (\$/MMBtu)	\$1.928	-\$0.029	\$1.957	\$1.916	\$1.835	\$1.860	\$1.885	\$1.891
FOOD AND FIBER FUTURES								
SUGAR #11 WORLD May 2024 (cents/lb)	21.45	0.85	20.60	20.60	21.09	21.69	22.69	21.33
COCOA May 2024 (\$/MT)	\$6,549	\$99	\$6,450	\$6,586	\$6,327	\$6,049	\$5,994	\$6,281
COFFEE May 2024 (cents/lb)	186.30	2.95	183.35	186.90	183.30	184.35	181.75	183.93
MILK CLASS III April 2024 (\$/cwt)	\$16.15	-\$0.10	\$16.25	\$16.58	\$16.78	\$16.96	\$17.24	\$16.76
ORANGE JUICE - A May 2024 (cents/lb)	372.40	6.60	365.80	364.25	358.40	358.15	351.25	359.57
COTTON #2 May 2024 (cents/lb)	95.28	1.04	94.24	94.58	95.57	99.57	101.08	97.01
FINANCIALS & ETC.								
DOW JONES 30 INDUSTRIALS	38,661	76	38,585	38,990	39,087	38,996	38,949	38,922
S&P 500 INDEX	5,105	26	5,079	5,131	5,137	5,096	5,070	5,103
GOLD April 2024 (\$/oz)	\$2,157	\$15	\$2,142	\$2,126	\$2,096	\$2,055	\$2,043	\$2,092
US TREASURY BOND June 2024	121 17/32	22/32	120 27/32	119 19/32	120 1/32	119 8/32	118 24/32	119 22/32
US DOLLAR INDEX March 2024	103.330	-0.423	103.753	103.778	103.799	104.098	103.904	103.866
EURO FX March 2024	\$1.0903	\$0.0044	\$1.0859	\$1.0862	\$1.0848	\$1.0809	\$1.0842	\$1.0844

/ 1 Prices of the prior week may reflect different contracts when there is a transition to the status of "Active Contract".

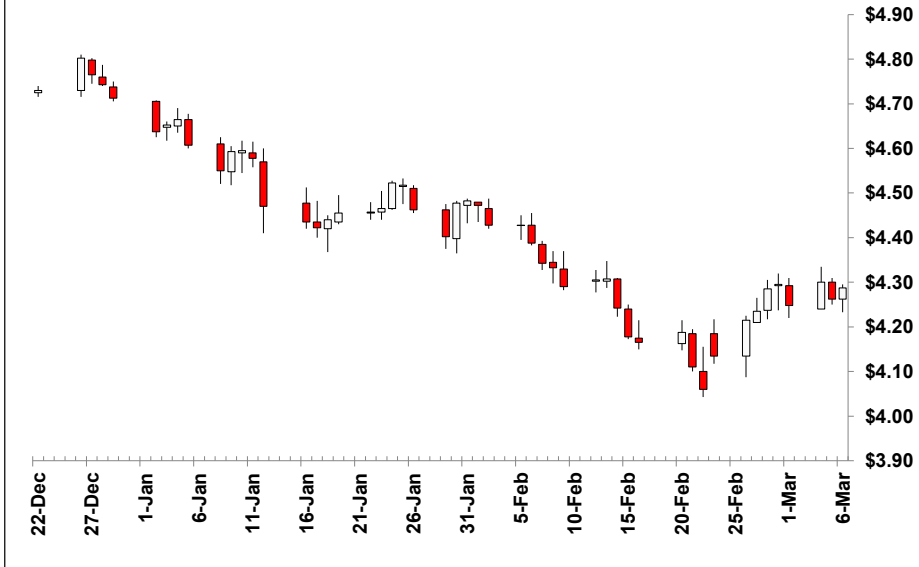


CORN May 2024 - Active Contract - (\$/bu)

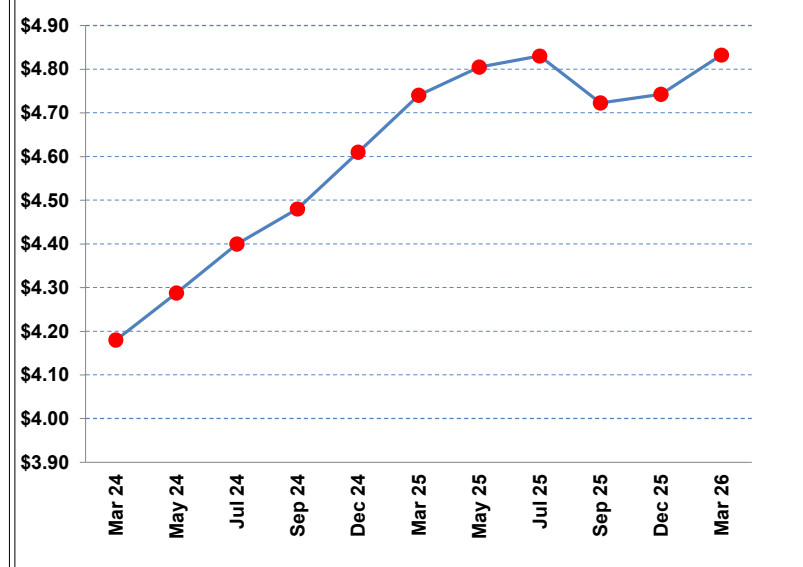
Wednesday, March 6, 2024

	Close /1	Change	10 MA /2	20 MA /2	40 MA /2	/3	RSI /4	Contract	Close	Change	Volume	Open Interest			
Wed, Mar 06,	\$4.2875	\$0.0250	\$4.2323 ↑	\$4.2391 ⇔	\$4.3568 ↓	⇔	47	Mar 24	\$4.1800	\$0.0450	2,059	3,174			
Tue, Mar 05,	\$4.2625	-\$0.0375	\$4.2145 ⇔	\$4.2441 ⇔	\$4.3634 ↓	↓	47	May 24	\$4.2875	\$0.0250	119,248	643,051			
Mon, Mar 04,	\$4.3000	\$0.0525	\$4.2070 ⇔	\$4.2524 ⇔	\$4.3720 ↓	↓	46	Jul 24	\$4.4000	\$0.0250	56,908	319,824			
Fri, Mar 01,	\$4.2475	-\$0.0475	\$4.1935 ⇔	\$4.2588 ⇔	\$4.3811 ↓	↓	44	Sep 24	\$4.4800	\$0.0175	21,345	191,612			
Thu, Feb 29,	\$4.2950	\$0.0100	\$4.1865 ⇔	\$4.2700 ⇔	\$4.3913 ↓	↓	42	Dec 24	\$4.6100	\$0.0175	34,588	278,901			
Wed, Feb 28,	\$4.2850	\$0.0500	\$4.1813 ⇔	\$4.2794 ⇔	\$4.3998 ↓	↓	36	Mar 25	\$4.7400	\$0.0125	4,484	34,734			
Tue, Feb 27,	\$4.2350	\$0.0200	\$4.1835 ⇔	\$4.2890 ⇔	\$4.4105 ↓	↓	31	May 25	\$4.8050	\$0.0075	1,123	4,988			
Mon, Feb 26,	\$4.2150	\$0.0800	\$4.1905 ⇔	\$4.2974 ⇔	\$4.4232 ↓	↓	28	Jul 25	\$4.8300	\$0.0025	973	7,276			
Fri, Feb 23,	\$4.1350	\$0.0750	\$4.1980 ⇔	\$4.3098 ↓	\$4.4369 ↓	↓	24	Sep 25	\$4.7225	\$0.0125	45	1,225			
% Pos. Closes /5	Mon	Tues	Wed	Thurs	Fri										
Prior 50 Days	57%	64%	55%	40%	18%	Dec 25	\$4.7425	\$0.0100	498	15,945	Mar 26	\$4.8325	\$0.0075	4	348

Rolling 50 Day Chart



Contract Closes



/ 1 Prior prices may reflect different contracts when there is a transition to the status of "Active Contract".

/ 2 Indicators of the simple moving averages (10, 20, & 40 day) are horizontal unless the trend is statistically significant. (critical t value is 95 percentile)

/ 3 Proprietary indicator implying if the price trend is upward, downward or insignificant.

/ 4 Relative Streight Index (RSI) can indicate potential highs or lows of a trading range when the price trend is not significant. (RSI of 30 is low & 70 high)

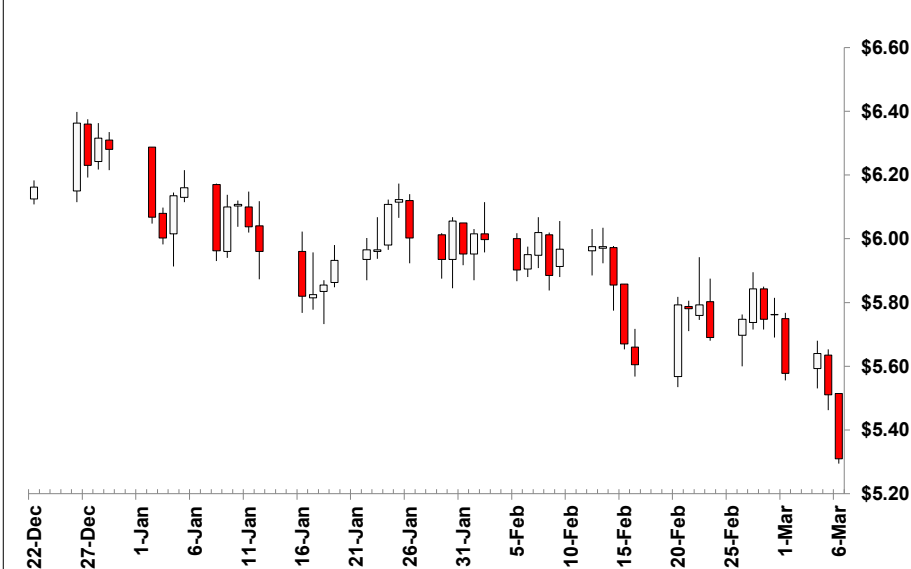
/ 5 Percentile of positive closes on particular weekdays. (prior 50 days)

WHEAT May 2024 - Active Contract - (\$/bu)

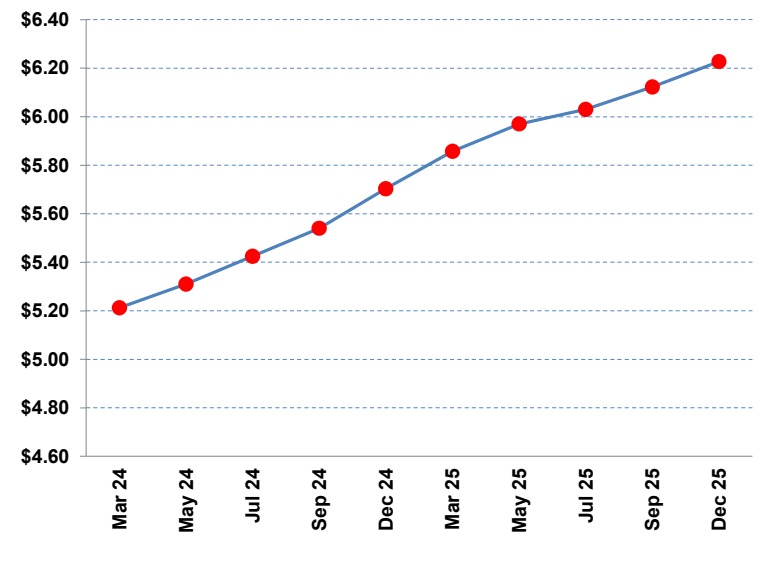
Wednesday, March 6, 2024

	Close /1	Change	10 MA /2	/2	20 MA /2	/2	40 MA /2	/2	/3	RSI /4	Contract	Close	Change	Volume	Open Interest
Wed, Mar 06,	\$5.3100	-\$0.2000	\$5.6620	↓	\$5.7573	↓	\$5.8688	↓	↓	38	Mar 24	\$5.2125	-\$0.2450	206	75
Tue, Mar 05,	\$5.5100	-\$0.1300	\$5.7090	↓	\$5.7893	↓	\$5.8851	↓	↓	41	May 24	\$5.3100	-\$0.2000	102,045	205,140
Mon, Mar 04,	\$5.6400	\$0.0625	\$5.7373	↔	\$5.8089	↔	\$5.9014	↓	↓	43	Jul 24	\$5.4250	-\$0.1325	70,249	112,322
Fri, Mar 01,	\$5.5775	-\$0.1850	\$5.7338	↔	\$5.8268	↓	\$5.9138	↓	↓	44	Sep 24	\$5.5400	-\$0.1050	21,119	36,690
Thu, Feb 29,	\$5.7625	\$0.0150	\$5.7430	↔	\$5.8486	↔	\$5.9244	↔	↓	44	Dec 24	\$5.7025	-\$0.0950	13,908	37,881
Wed, Feb 28,	\$5.7475	-\$0.0950	\$5.7523	↔	\$5.8581	↔	\$5.9320	↓	↓	44	Mar 25	\$5.8575	-\$0.0875	2,428	5,860
Tue, Feb 27,	\$5.8425	\$0.0950	\$5.7750	↔	\$5.8735	↔	\$5.9453	↓	↓	44	May 25	\$5.9700	-\$0.0750	469	1,663
Mon, Feb 26,	\$5.7475	\$0.0575	\$5.7883	↔	\$5.8781	↔	\$5.9571	↓	↓	43	Jul 25	\$6.0300	-\$0.0625	240	1,289
Fri, Feb 23,	\$5.6900	-\$0.1025	\$5.8103	↔	\$5.8909	↓	\$5.9692	↓	↓	41	Sep 25	\$6.1225	-\$0.0550	37	45
Dec 25												\$6.2275	-\$0.0550	11	286
% Pos. Closes /5		Mon	Tues	Wed	Thurs	Fri									
Prior 50 Days		57%	73%	36%	60%	36%									

Rolling 50 Day Chart



Contract Closes



/ 1 Prior prices may reflect different contracts when there is a transition to the status of "Active Contract".

/ 2 Indicators of the simple moving averages (10, 20, & 40 day) are horizontal unless the trend is statistically significant. (critical t value is 95 percentile)

/ 3 Proprietary indicator implying if the price trend is upward, downward or insignificant.

/ 4 Relative Strength Index (RSI) can indicate potential highs or lows of a trading range when the price trend is not significant. (RSI of 30 is low & 70 high)

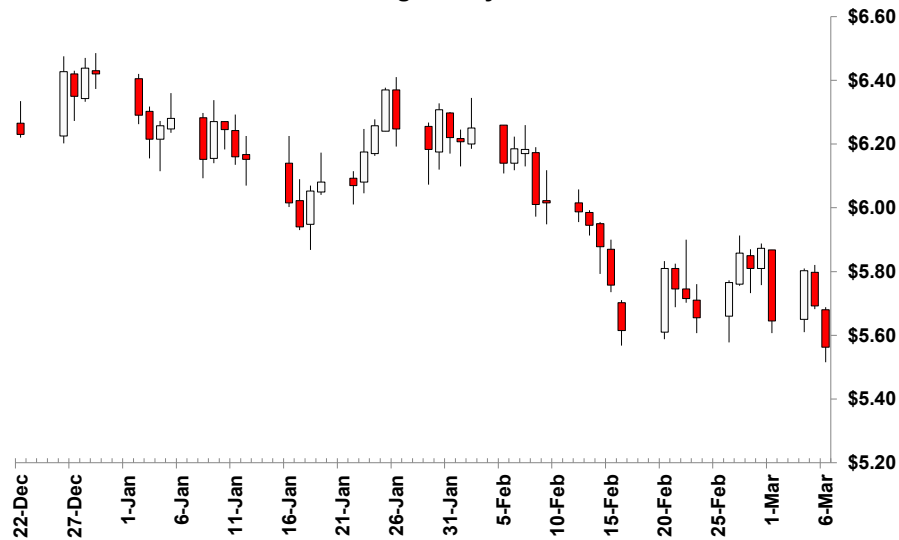
/ 5 Percentile of positive closes on particular weekdays. (prior 50 days)

HARD RED WINTER WHEAT May 2024 - Active Contract - (\$/bu)

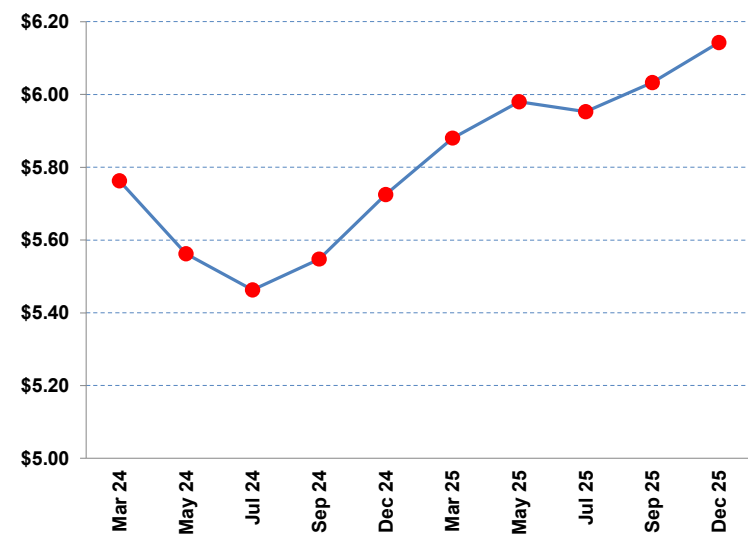
Wednesday, March 6, 2024

	Close /1	Change	10 MA /2	20 MA /2	40 MA /2	/3	RSI /4	Contract	Close	Change	Volume	Open Interest
Wed, Mar 06,	\$5.5625	-\$0.1300	\$5.7378 ↔	\$5.8161 ↓	\$5.9963 ↓	↓	42	Mar 24	\$5.7625	-\$0.1525	0	25
Tue, Mar 05,	\$5.6925	-\$0.1100	\$5.7560 ↔	\$5.8473 ↓	\$6.0110 ↓	↓	43	May 24	\$5.5625	-\$0.1300	25,656	119,233
Mon, Mar 04,	\$5.8025	\$0.1575	\$5.7678 ↔	\$5.8696 ↔	\$6.0257 ↓	↓	44	Jul 24	\$5.4625	-\$0.1150	19,884	75,365
Fri, Mar 01,	\$5.6450	-\$0.2275	\$5.7490 ↔	\$5.8920 ↓	\$6.0371 ↓	↓	43	Sep 24	\$5.5475	-\$0.1100	9,006	31,438
Thu, Feb 29,	\$5.8725	\$0.0625	\$5.7603 ↔	\$5.9201 ↔	\$6.0513 ↔	↓	42	Dec 24	\$5.7250	-\$0.1050	4,752	27,931
Wed, Feb 28,	\$5.8100	-\$0.0475	\$5.7608 ↔	\$5.9375 ↔	\$6.0618 ↓	↓	40	Mar 25	\$5.8800	-\$0.0975	480	1,547
Tue, Feb 27,	\$5.8575	\$0.0925	\$5.7743 ↔	\$5.9624 ↔	\$6.0770 ↓	↓	38	May 25	\$5.9800	-\$0.0825	109	603
Mon, Feb 26,	\$5.7650	\$0.1100	\$5.7873 ↔	\$5.9786 ↔	\$6.0915 ↓	↓	37	Jul 25	\$5.9525	-\$0.0725	51	314
Fri, Feb 23,	\$5.6550	-\$0.0600	\$5.8123 ↓	\$6.0028 ↓	\$6.1061 ↓	↓	35	Sep 25	\$6.0325	-\$0.0675	0	7
% Pos. Closes /5	Mon	Tues	Wed	Thurs	Fri							
Prior 50 Days	29%	64%	18%	50%	27%							

Rolling 50 Day Chart



Contract Closes



/ 1 Prior prices may reflect different contracts when there is a transition to the status of "Active Contract".

/ 2 Indicators of the simple moving averages (10, 20, & 40 day) are horizontal unless the trend is statistically significant. (critical t value is 95 percentile)

/ 3 Proprietary indicator implying if the price trend is upward, downward or insignificant.

/ 4 Relative Streight Index (RSI) can indicate potential highs or lows of a trading range when the price trend is not significant. (RSI of 30 is low & 70 high)

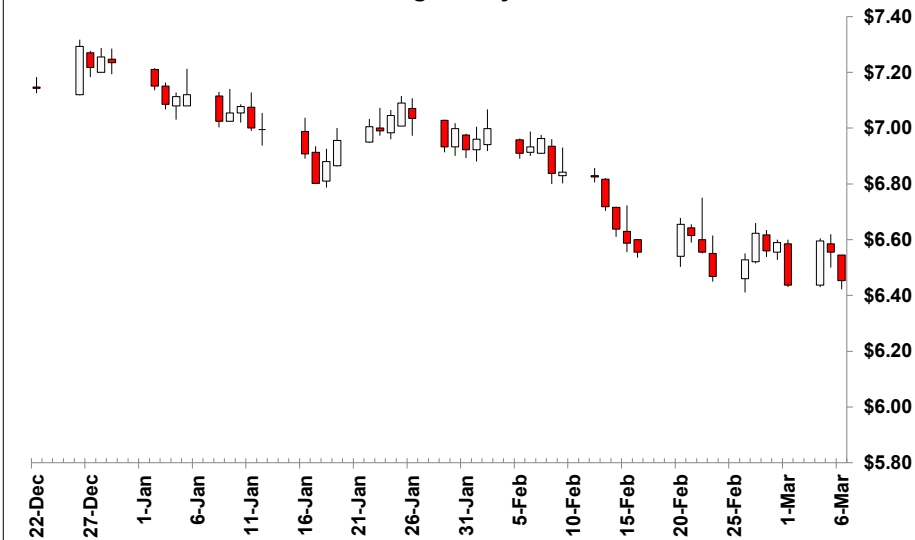
/ 5 Percentile of positive closes on particular weekdays. (prior 50 days)

HARD RED SPRING WHEAT May 2024 - Active Contract - (\$/bu)

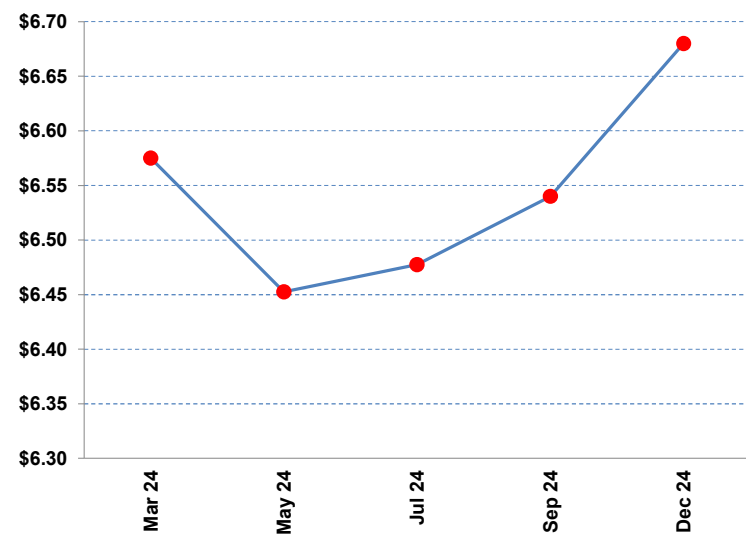
Wednesday, March 6, 2024

	Close /1	Change	10 MA /2	20 MA /2	40 MA /2	/3	RSI /4	Contract	Close	Change	Volume	Open Interest
Wed, Mar 06,	\$6.4525	-\$0.1025	\$6.5363 ⇌	\$6.6299 ↓	\$6.8022 ↓	↓	39	Mar 24	\$6.5750	\$0.0925	15	20
Tue, Mar 05,	\$6.5550	-\$0.0400	\$6.5525 ⇌	\$6.6539 ↓	\$6.8165 ↓	↓	40	May 24	\$6.4525	-\$0.1025	4,925	41,115
Mon, Mar 04,	\$6.5950	\$0.1575	\$6.5625 ⇌	\$6.6716 ⇌	\$6.8306 ↓	↓	39	Jul 24	\$6.4775	-\$0.0975	2,629	13,372
Fri, Mar 01,	\$6.4375	-\$0.1525	\$6.5585 ⇌	\$6.6918 ↓	\$6.8436 ↓	↓	37	Sep 24	\$6.5400	-\$0.0950	857	6,694
Thu, Feb 29,	\$6.5900	\$0.0300	\$6.5735 ⇌	\$6.7179 ↓	\$6.8598 ↓	↓	36	Dec 24	\$6.6800	-\$0.0850	244	3,415
Wed, Feb 28,	\$6.5600	-\$0.0625	\$6.5783 ⇌	\$6.7345 ⇌	\$6.8738 ↓	↓	35	Mar 25	\$6.8050	-\$0.0825	14	206
Tue, Feb 27,	\$6.6225	\$0.0950	\$6.5940 ⇌	\$6.7564 ↓	\$6.8906 ↓	↓	34					
Mon, Feb 26,	\$6.5275	\$0.0600	\$6.6143 ↓	\$6.7719 ↓	\$6.9064 ↓	↓	33					
Fri, Feb 23,	\$6.4675	-\$0.0875	\$6.6458 ↓	\$6.7973 ↓	\$6.9237 ↓	↓	32					
% Pos. Closes /5	Mon	Tues	Wed	Thurs	Fri							
Prior 50 Days	43%	55%	27%	60%	36%							

Rolling 50 Day Chart



Contract Closes



/ 1 Prior prices may reflect different contracts when there is a transition to the status of "Active Contract".

/ 2 Indicators of the simple moving averages (10, 20, & 40 day) are horizontal unless the trend is statistically significant. (critical t value is 95 percentile)

/ 3 Proprietary indicator implying if the price trend is upward, downward or insignificant.

/ 4 Relative Strength Index (RSI) can indicate potential highs or lows of a trading range when the price trend is not significant. (RSI of 30 is low & 70 high)

/ 5 Percentile of positive closes on particular weekdays. (prior 50 days)

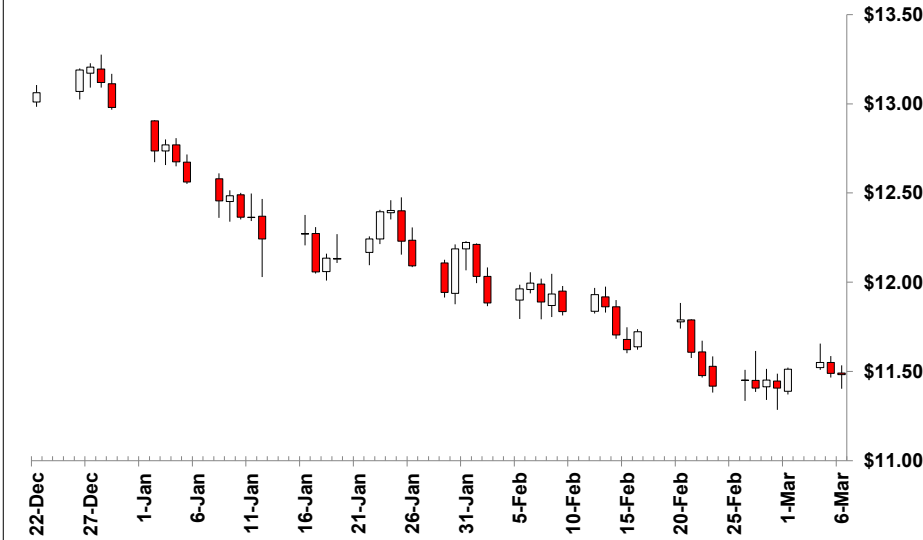


SOYBEANS May 2024 - Active Contract - (\$/bu)

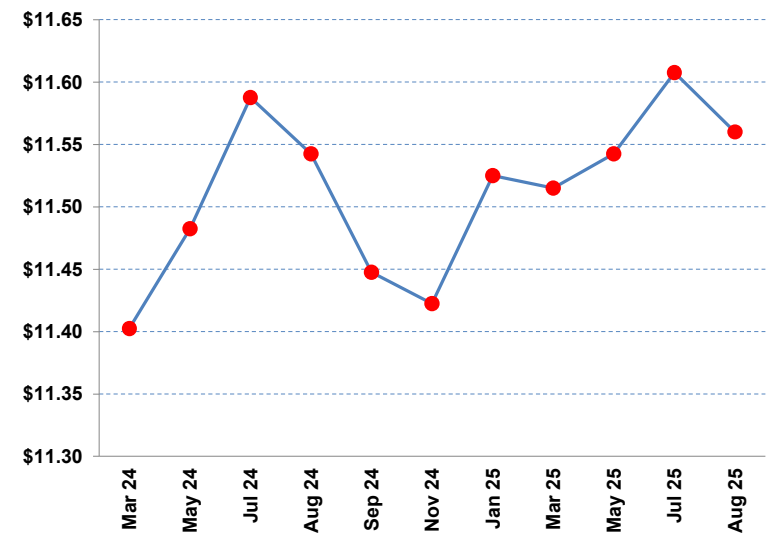
Wednesday, March 6, 2024

	Close /1	Change	10 MA /2	20 MA /2	40 MA /2	/3	RSI /4	Contract	Close	Change	Volume	Open Interest			
Wed, Mar 06,	\$11.4825	-\$0.0075	\$11.4650 ↔	\$11.6275 ↓	\$11.9049 ↓	↓	37	Mar 24	\$11.4025	-\$0.0050	287	781			
Tue, Mar 05,	\$11.4900	-\$0.0600	\$11.4775 ↔	\$11.6531 ↓	\$11.9292 ↓	↓	36	May 24	\$11.4825	-\$0.0075	93,946	344,165			
Mon, Mar 04,	\$11.5500	\$0.0375	\$11.5075 ↔	\$11.6768 ↔	\$11.9560 ↓	↓	35	Jul 24	\$11.5875	-\$0.0025	47,005	172,364			
Fri, Mar 01,	\$11.5125	\$0.1050	\$11.5248 ↔	\$11.6935 ↔	\$11.9841 ↓	↓	33	Aug 24	\$11.5425	-\$0.0200	8,464	24,326			
Thu, Feb 29,	\$11.4075	-\$0.0450	\$11.5358 ↔	\$11.7195 ↓	\$12.0156 ↓	↓	32	Sep 24	\$11.4475	-\$0.0300	3,229	13,599			
Wed, Feb 28,	\$11.4525	\$0.0450	\$11.5655 ↔	\$11.7603 ↓	\$12.0488 ↓	↓	31	Nov 24	\$11.4225	-\$0.0200	16,615	123,481			
Tue, Feb 27,	\$11.4075	-\$0.0450	\$11.6065 ↓	\$11.7970 ↓	\$12.0869 ↓	↓	32	Jan 25	\$11.5250	-\$0.0125	3,772	11,302			
Mon, Feb 26,	\$11.4525	\$0.0350	\$11.6588 ↓	\$11.8238 ↓	\$12.1298 ↓	↓	33	Mar 25	\$11.5150	-\$0.0150	2,344	15,285			
Fri, Feb 23,	\$11.4175	-\$0.0600	\$11.6970 ↓	\$11.8558 ↓	\$12.1736 ↓	↓	34	May 25	\$11.5425	-\$0.0150	779	7,584			
% Pos. Closes /5	Mon	Tues	Wed	Thurs	Fri										
Prior 50 Days	71%	64%	45%	30%	36%	Jul 25	\$11.6075	-\$0.0125	203	3,176	Aug 25	\$11.5600	-\$0.0125	0	18

Rolling 50 Day Chart



Contract Closes



/ 1 Prior prices may reflect different contracts when there is a transition to the status of "Active Contract".

/ 2 Indicators of the simple moving averages (10, 20, & 40 day) are horizontal unless the trend is statistically significant. (critical t value is 95 percentile)

/ 3 Proprietary indicator implying if the price trend is upward, downward or insignificant.

/ 4 Relative Streight Index (RSI) can indicate potential highs or lows of a trading range when the price trend is not significant. (RSI of 30 is low & 70 high)

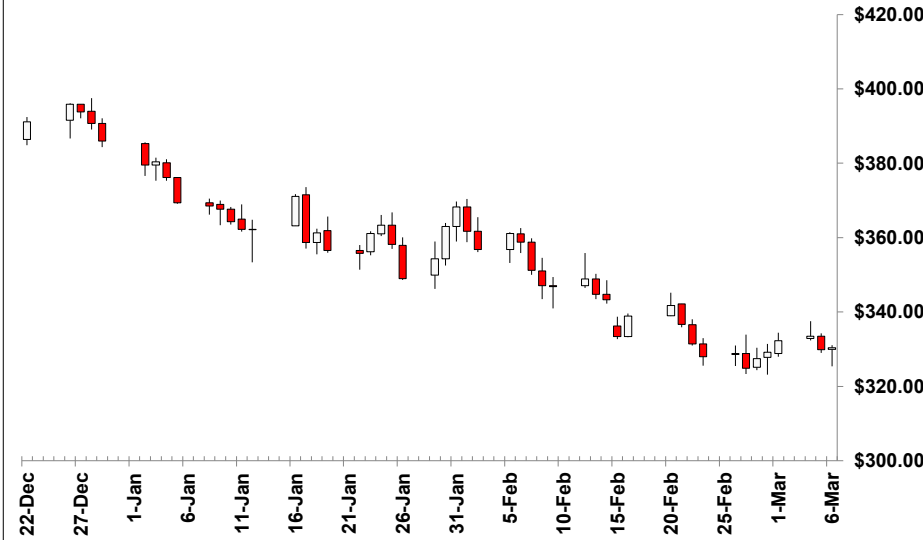
/ 5 Percentile of positive closes on particular weekdays. (prior 50 days)

SOYBEAN MEAL May 2024 - Active Contract - (\$/short ton)

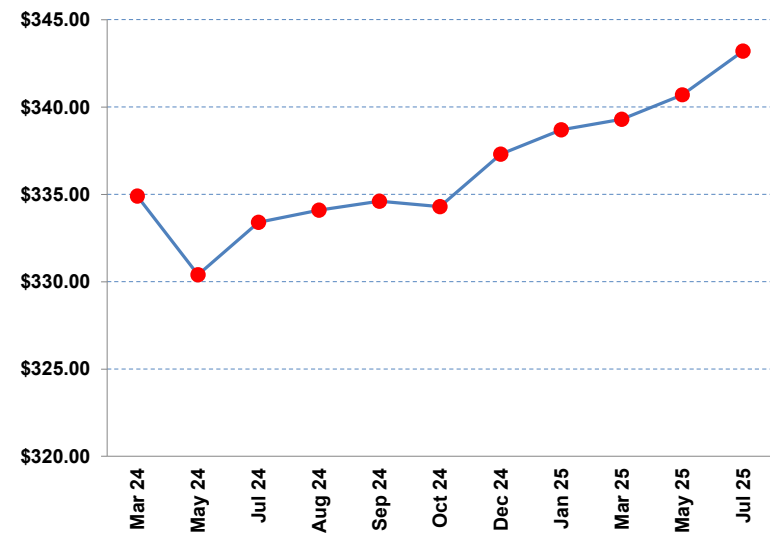
Wednesday, March 6, 2024

	Close /1	Change	10 MA /2	20 MA /2	40 MA /2	/3	RSI /4	Contract	Close	Change	Volume	Open Interest
Wed, Mar 06,	\$330.40	\$0.50	\$329.57 ↔	\$336.43 ↓	\$348.59 ↓	↓	37	Mar 24	\$334.90	\$3.70	260	720
Tue, Mar 05,	\$329.90	-\$3.60	\$330.20 ↔	\$337.85 ↓	\$349.55 ↓	↓	36	May 24	\$330.40	\$0.50	65,944	234,246
Mon, Mar 04,	\$333.50	\$1.20	\$331.38 ↔	\$339.41 ↓	\$350.53 ↓	↓	35	Jul 24	\$333.40	\$0.30	33,112	108,106
Fri, Mar 01,	\$332.30	\$3.10	\$331.92 ↔	\$340.57 ↓	\$351.60 ↓	↓	33	Aug 24	\$334.10	-\$0.10	7,460	25,311
Thu, Feb 29,	\$329.20	\$1.70	\$332.03 ↔	\$342.04 ↓	\$352.80 ↓	↓	31	Sep 24	\$334.60	-\$0.40	6,099	19,567
Wed, Feb 28,	\$327.50	\$2.60	\$333.44 ↓	\$344.00 ↓	\$354.06 ↓	↓	31	Oct 24	\$334.30	-\$0.70	3,545	14,209
Tue, Feb 27,	\$324.90	-\$3.70	\$335.17 ↓	\$345.77 ↓	\$355.52 ↓	↓	31	Dec 24	\$337.30	-\$0.90	8,902	49,188
Mon, Feb 26,	\$328.60	\$0.60	\$337.57 ↓	\$347.24 ↓	\$357.17 ↓	↓	33	Jan 25	\$338.70	-\$0.90	799	5,143
Fri, Feb 23,	\$328.00	-\$3.40	\$339.39 ↓	\$348.26 ↔	\$358.80 ↓	↓	34	Mar 25	\$339.30	-\$0.40	676	3,220
% Pos. Closes /5	Mon	Tues	Wed	Thurs	Fri							
Prior 50 Days	57%	45%	45%	20%	27%							

Rolling 50 Day Chart



Contract Closes



/ 1 Prior prices may reflect different contracts when there is a transition to the status of "Active Contract".

/ 2 Indicators of the simple moving averages (10, 20, & 40 day) are horizontal unless the trend is statistically significant. (critical t value is 95 percentile)

/ 3 Proprietary indicator implying if the price trend is upward, downward or insignificant.

/ 4 Relative Strenght Index (RSI) can indicate potential highs or lows of a trading range when the price trend is not significant. (RSI of 30 is low & 70 high)

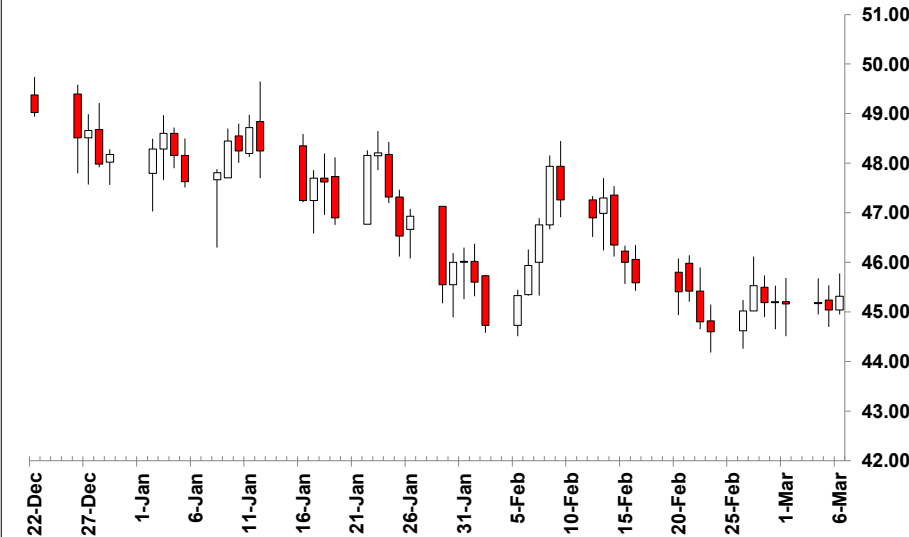
/ 5 Percentile of positive closes on particular weekdays. (prior 50 days)

SOYBEAN OIL May 2024 - Active Contract - (cents/lb)

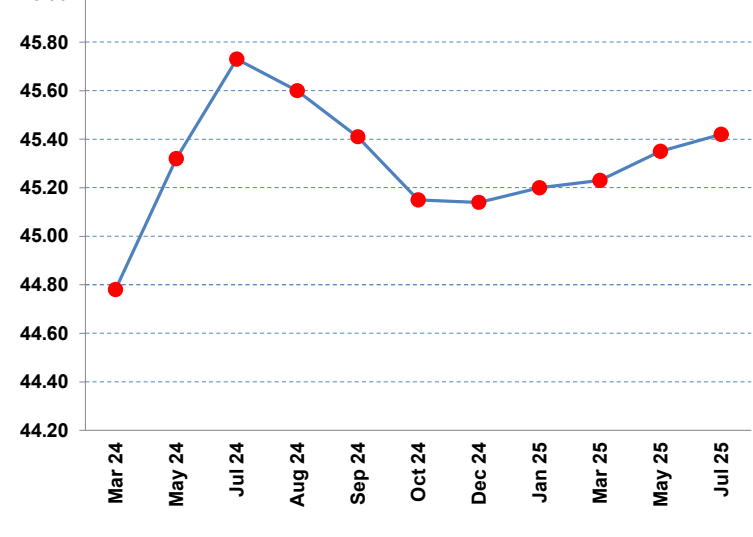
Wednesday, March 6, 2024

	Close /1	Change	10 MA /2	/2	20 MA /2	/2	40 MA /2	/2	/3	RSI /4	Contract	Close	Change	Volume	Open Interest
Wed, Mar 06,	45.32	0.28	45.10	↔	45.80	↔	46.39	↓	↓	42	Mar 24	44.78	0.27	102	401
Tue, Mar 05,	45.04	-0.13	45.11	↔	45.83	↔	46.45	↓	↓	42	May 24	45.32	0.28	55,096	248,514
Mon, Mar 04,	45.17	0.01	45.15	↔	45.84	↔	46.51	↔	↓	42	Jul 24	45.73	0.26	25,792	133,654
Fri, Mar 01,	45.16	-0.05	45.19	↔	45.82	↔	46.59	↓	↓	42	Aug 24	45.60	0.22	5,601	32,803
Thu, Feb 29,	45.21	0.02	45.28	↔	45.84	↔	46.67	↓	↓	41	Sep 24	45.41	0.23	2,105	20,860
Wed, Feb 28,	45.19	-0.34	45.39	↔	45.88	↔	46.75	↓	↓	40	Oct 24	45.15	0.23	2,043	16,168
Tue, Feb 27,	45.53	0.51	45.60	↓	45.93	↔	46.83	↓	↓	39	Dec 24	45.14	0.22	8,402	76,705
Mon, Feb 26,	45.02	0.42	45.74	↔	45.93	↔	46.89	↓	↓	39	Jan 25	45.20	0.21	513	6,419
Fri, Feb 23,	44.60	-0.20	45.96	↓	46.02	↓	46.98	↓	↓	39	Mar 25	45.23	0.20	434	5,129
% Pos. Closes /5						Mon	Tues	Wed	Thurs	Fri	May 25	45.35	0.19	95	2,107
Prior 50 Days						57%	64%	55%	30%	18%	Jul 25	45.42	0.18	108	1,402

Rolling 50 Day Chart



Contract Closes



/ 1 Prior prices may reflect different contracts when there is a transition to the status of "Active Contract".

/ 2 Indicators of the simple moving averages (10, 20, & 40 day) are horizontal unless the trend is statistically significant. (critical t value is 95 percentile)

/ 3 Proprietary indicator implying if the price trend is upward, downward or insignificant.

/ 4 Relative Strength Index (RSI) can indicate potential highs or lows of a trading range when the price trend is not significant. (RSI of 30 is low & 70 high)

/ 5 Percentile of positive closes on particular weekdays. (prior 50 days)

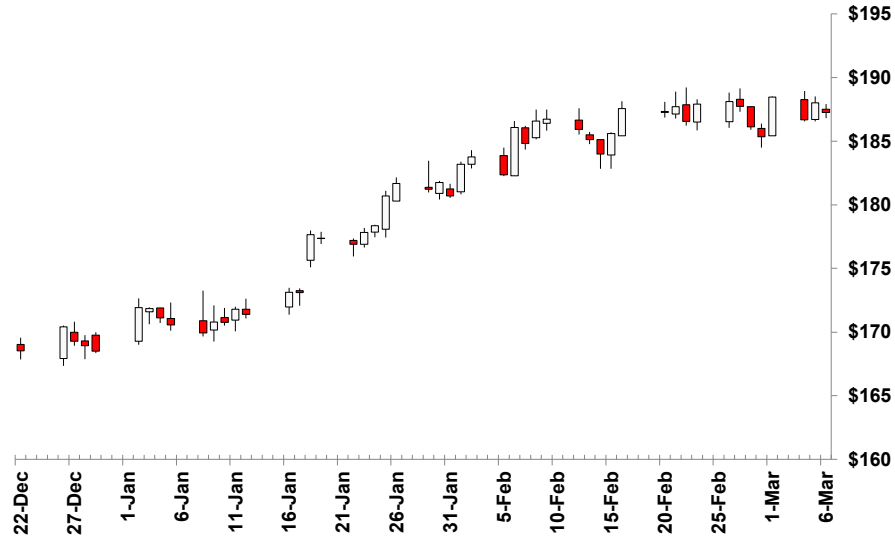


LIVE CATTLE April 2024 - Active Contract - (\$/cwt)

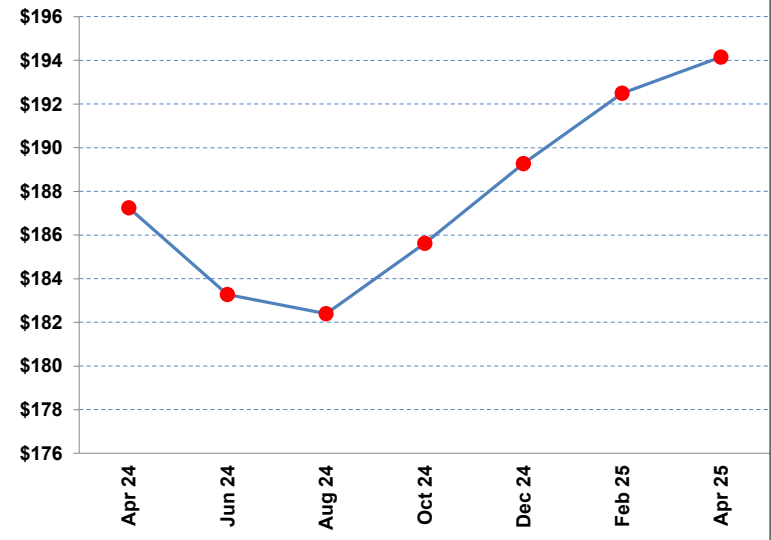
Wednesday, March 6, 2024

	Close /1	Change	10 MA /2	20 MA /2	40 MA /2	/3	RSI /4	Contract	Close	Change	Volume	Open Interest		
Wed, Mar 06,	\$187.250	-\$0.750	\$187.213	↔	\$186.671	↔	\$182.35 ↑	↑	59	Apr 24	\$187.25	-\$0.750	16,528	125,374
Tue, Mar 05,	\$188.000	\$1.325	\$187.258	↔	\$186.613	↔	\$181.91 ↑	↑	59	Jun 24	\$183.28	-\$0.250	12,180	80,728
Mon, Mar 04,	\$186.675	-\$1.775	\$187.190	↔	\$186.330	↑	\$181.48 ↑	↑	60	Aug 24	\$182.40	-\$0.375	5,603	47,368
Fri, Mar 01,	\$188.450	\$3.100	\$187.278	↔	\$186.184	↑	\$181.09 ↑	↑	62	Oct 24	\$185.63	-\$0.400	3,473	30,262
Thu, Feb 29,	\$185.350	-\$0.775	\$186.993	↔	\$185.920	↔	\$180.67 ↑	↑	62	Dec 24	\$189.28	-\$0.225	1,831	18,348
Wed, Feb 28,	\$186.125	-\$1.600	\$186.858	↔	\$185.688	↑	\$180.34 ↑	↑	64	Feb 25	\$192.50	-\$0.250	553	8,052
Tue, Feb 27,	\$187.725	-\$0.375	\$186.755	↔	\$185.469	↑	\$179.90 ↑	↑	66	Apr 25	\$194.15	-\$0.225	233	5,005
Mon, Feb 26,	\$188.100	\$0.200	\$186.575	↔	\$185.144	↑	\$179.43 ↑	↑	67					
Fri, Feb 23,	\$187.900	\$1.350	\$186.438	↔	\$184.823	↑	\$178.96 ↑	↑	67					
% Pos. Closes /5	Mon	Tues	Wed	Thurs	Fri									
Prior 50 Days	14%	82%	27%	60%	64%									

Rolling 50 Day Chart



Contract Closes



/ 1 Prior prices may reflect different contracts when there is a transition to the status of "Active Contract".

/ 2 Indicators of the simple moving averages (10, 20, & 40 day) are horizontal unless the trend is statistically significant. (critical t value is 95 percentile)

/ 3 Proprietary indicator implying if the price trend is upward, downward or insignificant.

/ 4 Relative Strength Index (RSI) can indicate potential highs or lows of a trading range when the price trend is not significant. (RSI of 30 is low & 70 high)

/ 5 Percentile of positive closes on particular weekdays. (prior 50 days)

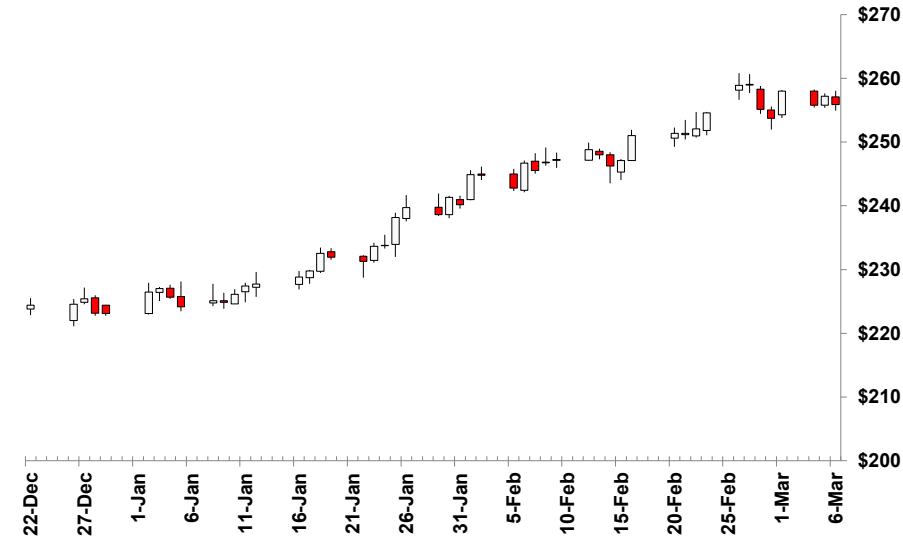


FEEDER CATTLE April 2024 - Active Contract - (\$/cwt)

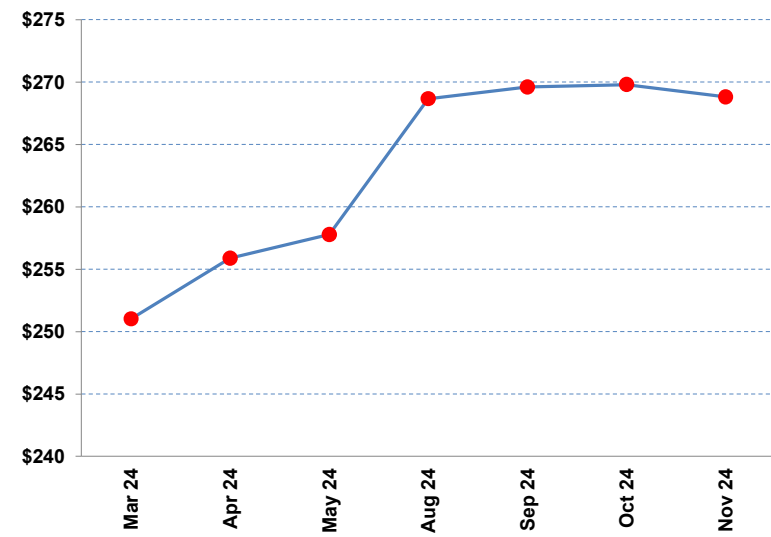
Wednesday, March 6, 2024

	Close /1	Change	10 MA /2	/2	20 MA /2	/2	40 MA /2	/2	/3	RSI /4	Contract	Close	Change	Volume	Open Interest
Wed, Mar 06,	\$255.875	-\$1.300	\$256.010	↔	\$252.178	↑	\$243.71	↑	↑	66	Mar 24	\$251.03	-\$1.275	1,570	6,355
Tue, Mar 05,	\$257.175	\$1.425	\$255.558	↔	\$251.718	↑	\$242.94	↑	↑	67	Apr 24	\$255.88	-\$1.300	5,940	18,150
Mon, Mar 04,	\$255.750	-\$2.250	\$254.978	↔	\$250.996	↑	\$242.12	↑	↑	70	May 24	\$257.78	-\$0.925	3,750	12,807
Fri, Mar 01,	\$258.000	\$4.275	\$254.505	↔	\$250.449	↑	\$241.37	↑	↑	73	Aug 24	\$268.68	-\$0.925	1,964	10,507
Thu, Feb 29,	\$253.725	-\$1.375	\$253.415	↔	\$249.793	↔	\$240.59	↑	↑	74	Sep 24	\$269.60	-\$0.700	819	3,358
Wed, Feb 28,	\$255.100	-\$3.850	\$252.665	↔	\$249.114	↑	\$239.91	↑	↑	76	Oct 24	\$269.80	-\$0.700	514	4,049
Tue, Feb 27,	\$258.950	\$0.050	\$251.955	↑	\$248.425	↑	\$239.11	↑	↑	77	Nov 24	\$268.80	-\$0.725	177	2,064
Mon, Feb 26,	\$258.900	\$4.325	\$250.943	↑	\$247.409	↑	\$238.21	↑	↑	76					
Fri, Feb 23,	\$254.575	\$2.525	\$249.768	↑	\$246.449	↑	\$237.38	↑	↑	74					
% Pos. Closes /5						Mon	Tues	Wed	Thurs	Fri					
Prior 50 Days						43%	73%	55%	70%	55%					

Rolling 50 Day Chart



Contract Closes



/ 1 Prior prices may reflect different contracts when there is a transition to the status of "Active Contract".

/ 2 Indicators of the simple moving averages (10, 20, & 40 day) are horizontal unless the trend is statistically significant. (critical t value is 95 percentile)

/ 3 Proprietary indicator implying if the price trend is upward, downward or insignificant.

/ 4 Relative Strength Index (RSI) can indicate potential highs or lows of a trading range when the price trend is not significant. (RSI of 30 is low & 70 high)

/ 5 Percentile of positive closes on particular weekdays. (prior 50 days)



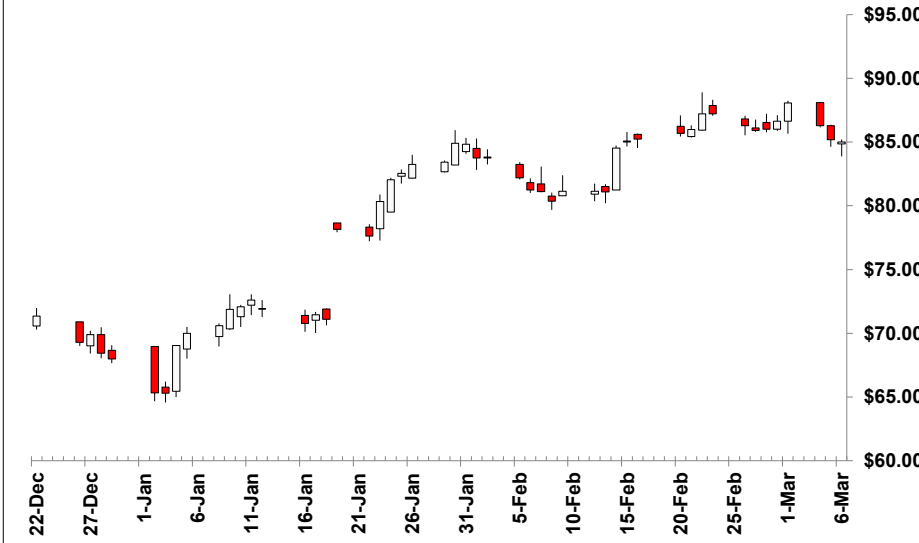
LEAN HOGS April 2024 - Active Contract - (\$/cwt)

Wednesday, March 6, 2024

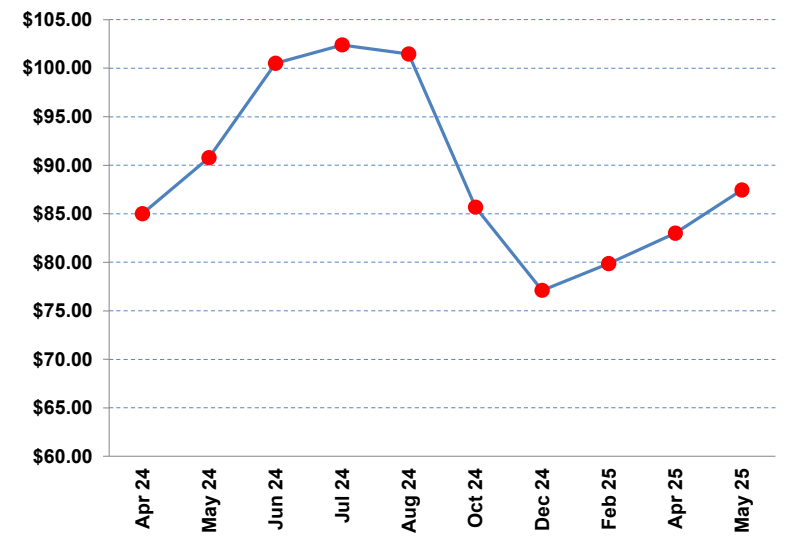
	Close /1	Change	10 MA /2	/2	20 MA /2	/2	40 MA /2	/2	/3	RSI /4	Contract	Close	Change	Volume	Open Interest
Wed, Mar 06,	\$85.000	-\$0.175	\$86.373	↓	\$84.746	↔	\$81.62	↑	↑	63	Apr 24	\$85.00	-\$0.175	26,494	83,346
Tue, Mar 05,	\$85.175	-\$1.100	\$86.470	↔	\$84.559	↔	\$81.26	↑	↑	66	May 24	\$90.78	-\$0.800	257	5,539
Mon, Mar 04,	\$86.275	-\$1.800	\$86.520	↔	\$84.410	↔	\$80.88	↑	↑	68	Jun 24	\$100.50	-\$1.100	16,248	58,260
Fri, Mar 01,	\$88.075	\$1.450	\$86.415	↑	\$84.287	↔	\$80.45	↑	↑	69	Jul 24	\$102.40	-\$0.775	6,669	26,907
Thu, Feb 29,	\$86.625	\$0.625	\$86.108	↔	\$84.071	↔	\$79.88	↑	↑	69	Aug 24	\$101.45	-\$0.575	5,674	29,635
Wed, Feb 28,	\$86.000	\$0.100	\$85.898	↔	\$83.981	↔	\$79.35	↑	↑	71	Oct 24	\$85.68	-\$0.475	3,300	30,008
Tue, Feb 27,	\$85.900	-\$0.375	\$85.405	↑	\$83.926	↔	\$78.90	↑	↑	72	Dec 24	\$77.10	-\$0.225	1,970	18,362
Mon, Feb 26,	\$86.275	-\$0.925	\$84.928	↑	\$83.802	↔	\$78.46	↑	↑	72	Feb 25	\$79.85	-\$0.050	445	3,445
Fri, Feb 23,	\$87.200	\$0.000	\$84.415	↑	\$83.651	↔	\$78.05	↑	↑	73	Apr 25	\$83.00	-\$0.025	21	962
May 25	\$87.45	-\$0.075										\$87.45	-\$0.075	0	2

% Pos. Closes /5	Mon	Tues	Wed	Thurs	Fri
Prior 50 Days	43%	27%	73%	50%	55%

Rolling 50 Day Chart



Contract Closes



/ 1 Prior prices may reflect different contracts when there is a transition to the status of "Active Contract".

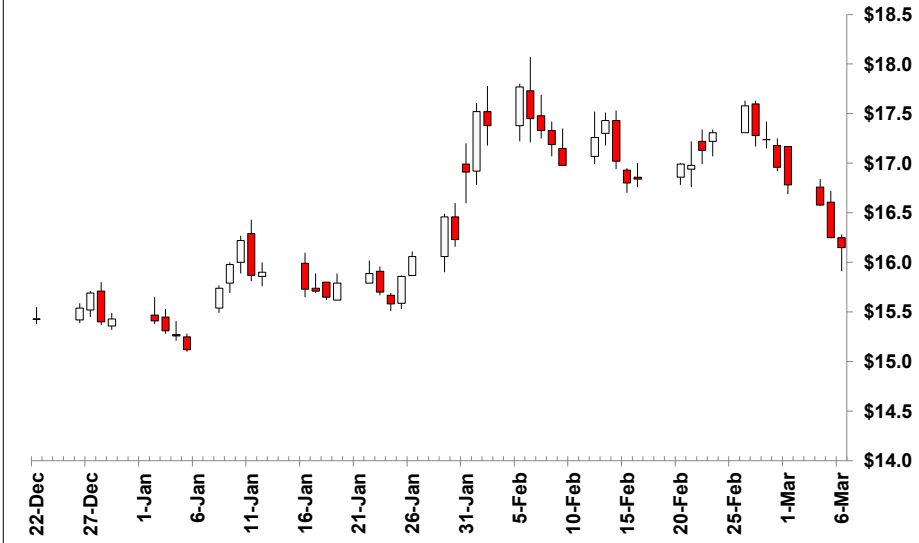
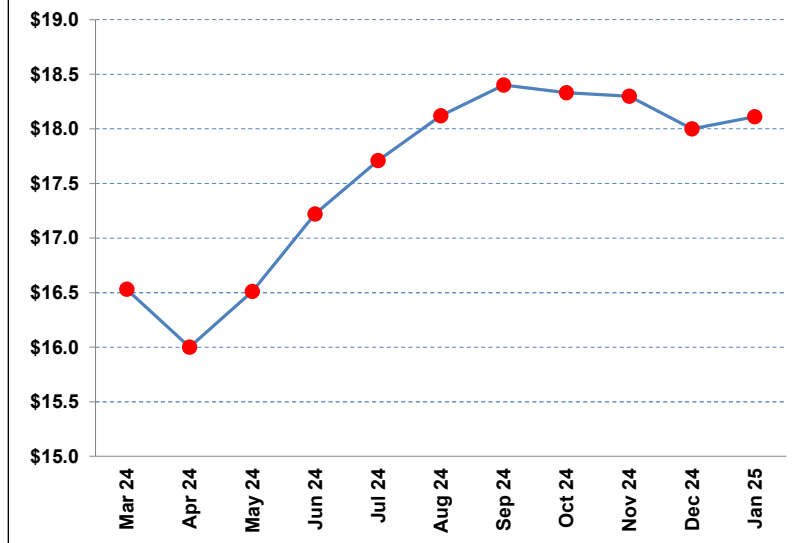
/ 2 Indicators of the simple moving averages (10, 20, & 40 day) are horizontal unless the trend is statistically significant. (critical t value is 95 percentile)

/ 3 Proprietary indicator implying if the price trend is upward, downward or insignificant.

/ 4 Relative Strength Index (RSI) can indicate potential highs or lows of a trading range when the price trend is not significant. (RSI of 30 is low & 70 high)

/ 5 Percentile of positive closes on particular weekdays. (prior 50 days)

	Close /1	Change	10 MA /2	/2	20 MA /2	/2	40 MA /2	/2	/3	RSI /4	Contract	Close	Change	Volume	Open Interest
Wed, Mar 06,	\$16.15	-\$0.10	\$16.93	↔	\$17.00	↓	\$16.64	↔	↔	44	Mar 24	\$16.53	\$0.06	591	3,872
Tue, Mar 05,	\$16.25	-\$0.33	\$17.01	↔	\$17.07	↓	\$16.63	↔	↔	48	Apr 24	\$16.00	-\$0.10	1,260	5,754
Mon, Mar 04,	\$16.58	-\$0.20	\$17.08	↔	\$17.15	↓	\$16.61	↑	↑	51	May 24	\$16.51	-\$0.26	805	3,002
Fri, Mar 01,	\$16.78	-\$0.18	\$17.11	↔	\$17.19	↓	\$16.57	↑	↑	55	Jun 24	\$17.22	-\$0.13	187	1,940
Thu, Feb 29,	\$16.96	-\$0.28	\$17.11	↔	\$17.22	↓	\$16.54	↑	↔	57	Jul 24	\$17.71	-\$0.14	59	1,317
Wed, Feb 28,	\$17.24	-\$0.04	\$17.12	↔	\$17.22	↔	\$16.50	↑	↔	59	Aug 24	\$18.12	-\$0.13	9	1,224
Tue, Feb 27,	\$17.28	-\$0.30	\$17.14	↔	\$17.17	↑	\$16.45	↑	↔	58	Sep 24	\$18.40	-\$0.17	22	1,055
Mon, Feb 26,	\$17.58	\$0.27	\$17.13	↔	\$17.13	↑	\$16.40	↑	↔	58	Oct 24	\$18.33	-\$0.17	10	878
Fri, Feb 23,	\$17.31	\$0.18	\$17.07	↔	\$17.05	↑	\$16.36	↑	↔	56	Nov 24	\$18.30	-\$0.14	20	961
% Pos. Closes /5			Mon	Tues	Wed	Thurs	Fri				Dec 24	\$18.00	-\$0.17	10	820
Prior 50 Days			86%	36%	27%	20%	45%				Jan 25	\$18.11	\$0.00	0	268

Rolling 50 Day Chart

Contract Closes


/ 1 Prior prices may reflect different contracts when there is a transition to the status of "Active Contract".

/ 2 Indicators of the simple moving averages (10, 20, & 40 day) are horizontal unless the trend is statistically significant. (critical t value is 95 percentile)

/ 3 Proprietary indicator implying if the price trend is upward, downward or insignificant.

/ 4 Relative Strength Index (RSI) can indicate potential highs or lows of a trading range when the price trend is not significant. (RSI of 30 is low & 70 high)

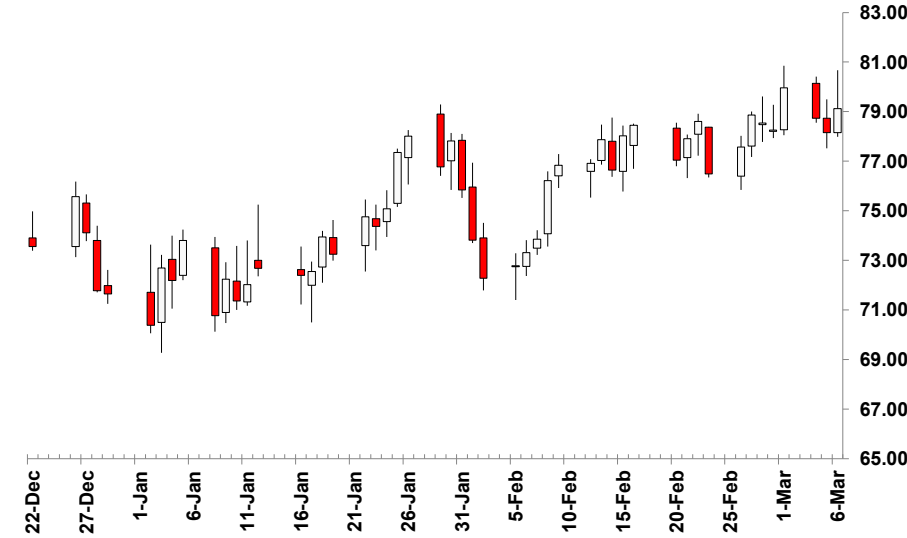
/ 5 Percentile of positive closes on particular weekdays. (prior 50 days)

CRUDE OIL April 2024 - Active Contract - (\$/barrel)

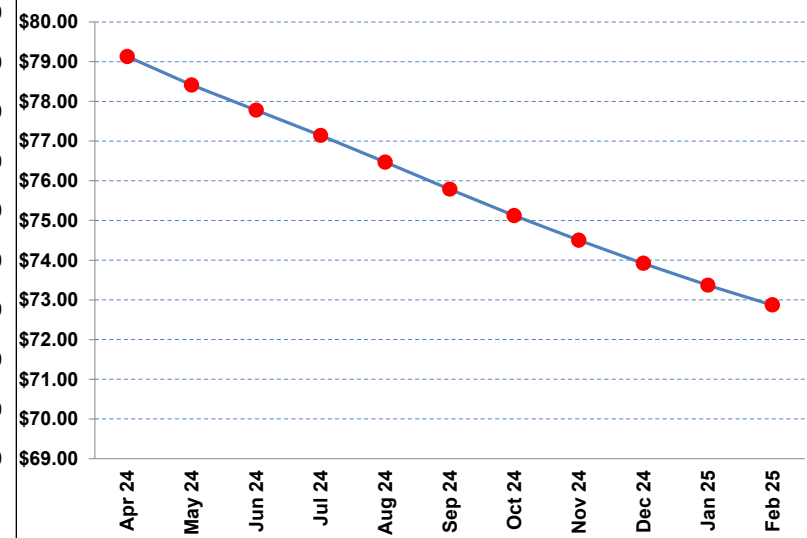
Wednesday, March 6, 2024

	Close /1	Change	10 MA /2	/2	20 MA /2	/2	40 MA /2	/2	/3	RSI /4	Contract	Close	Change	Volume	Open Interest
Wed, Mar 06,	\$79.12	\$0.97	\$78.43	↔	\$77.71	↑	\$75.92	↑	↑	57	Apr 24	\$79.13	\$0.97	436,521	263,409
Tue, Mar 05,	\$78.15	-\$0.59	\$78.31	↔	\$77.42	↑	\$75.71	↑	↑	57	May 24	\$78.41	\$0.98	220,430	188,855
Mon, Mar 04,	\$78.74	-\$1.23	\$78.20	↔	\$77.15	↑	\$75.60	↔	↑	58	Jun 24	\$77.78	\$0.93	158,508	180,759
Fri, Mar 01,	\$79.97	\$1.71	\$78.17	↔	\$76.82	↑	\$75.44	↑	↑	58	Jul 24	\$77.14	\$0.88	58,136	108,857
Thu, Feb 29,	\$78.26	-\$0.28	\$77.98	↔	\$76.52	↑	\$75.26	↑	↑	56	Aug 24	\$76.47	\$0.82	28,855	56,047
Wed, Feb 28,	\$78.54	-\$0.33	\$77.82	↑	\$76.40	↔	\$75.06	↑	↑	57	Sep 24	\$75.79	\$0.74	46,172	103,860
Tue, Feb 27,	\$78.87	\$1.29	\$77.75	↔	\$76.36	↔	\$74.89	↑	↑	57	Oct 24	\$75.12	\$0.64	13,703	54,110
Mon, Feb 26,	\$77.58	\$1.09	\$77.55	↔	\$76.26	↔	\$74.71	↑	↑	56	Nov 24	\$74.50	\$0.56	5,087	43,632
Fri, Feb 23,	\$76.49	-\$2.12	\$77.48	↔	\$76.28	↔	\$74.62	↔	↑	57	Dec 24	\$73.92	\$0.58	55,183	182,109
% Pos. Closes /5		Mon	Tues	Wed	Thurs	Fri					Jan 25	\$73.37	\$0.53	2,993	38,639
Prior 50 Days		57%	55%	64%	70%	45%					Feb 25	\$72.87	\$0.49	1,668	24,737

Rolling 50 Day Chart



Contract Closes



/ 1 Prior prices may reflect different contracts when there is a transition to the status of "Active Contract".

/ 2 Indicators of the simple moving averages (10, 20, & 40 day) are horizontal unless the trend is statistically significant. (critical t value is 95 percentile)

/ 3 Proprietary indicator implying if the price trend is upward, downward or insignificant.

/ 4 Relative Strength Index (RSI) can indicate potential highs or lows of a trading range when the price trend is not significant. (RSI of 30 is low & 70 high)

/ 5 Percentile of positive closes on particular weekdays. (prior 50 days)

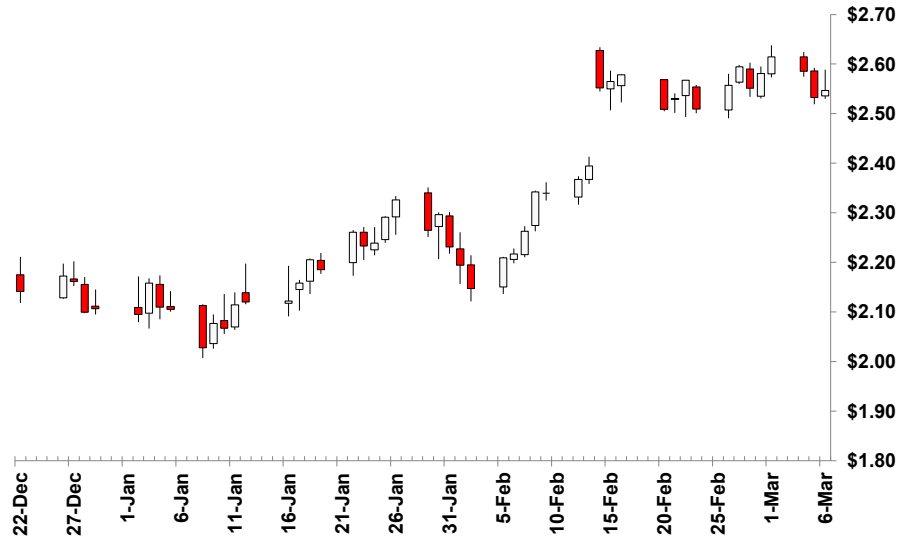


RBOB GASOLINE April 2024 - Active Contract - (\$/gal)

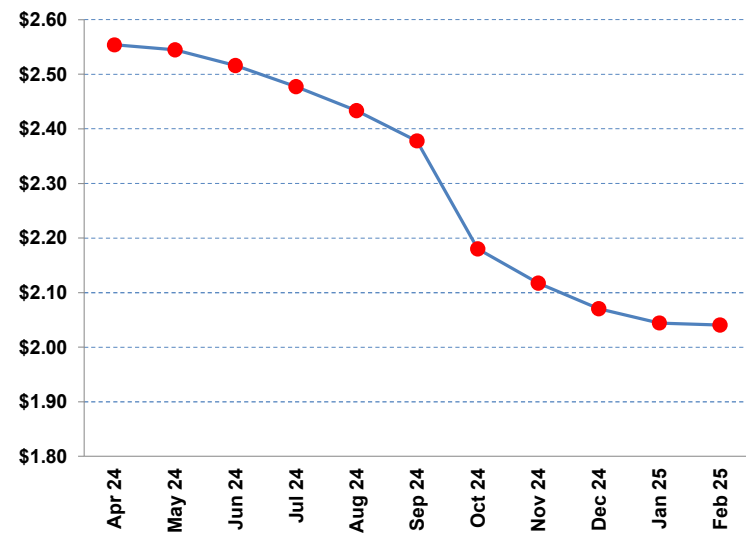
Wednesday, March 6, 2024

	Close /1	Change	10 MA /2	20 MA /2	40 MA /2	/3	RSI /4		Contract	Close	Change	Volume	Open Interest	
Wed, Mar 06,	\$2.5468	\$0.0140	\$2.5640	↔	\$2.5041	↑	\$2.3511	↑	63	Apr 24	\$2.5539	\$0.0140	48,234	96,770
Tue, Mar 05,	\$2.5328	-\$0.0529	\$2.5624	↔	\$2.4876	↑	\$2.3381	↑	63	May 24	\$2.5446	\$0.0154	42,298	73,326
Mon, Mar 04,	\$2.5857	-\$0.0287	\$2.5600	↔	\$2.4714	↑	\$2.3274	↑	66	Jun 24	\$2.5159	\$0.0165	27,593	53,822
Fri, Mar 01,	\$2.6144	\$0.0334	\$2.5593	↔	\$2.4495	↑	\$2.3155	↑	66	Jul 24	\$2.4773	\$0.0161	12,383	33,749
Thu, Feb 29,	\$2.5810	\$0.0298	\$2.5544	↔	\$2.4285	↑	\$2.3041	↑	65	Aug 24	\$2.4334	\$0.0154	11,269	20,764
Wed, Feb 28,	\$2.5512	-\$0.0432	\$2.5515	↔	\$2.4111	↔	\$2.2920	↑	66	Sep 24	\$2.3778	\$0.0163	14,197	30,900
Tue, Feb 27,	\$2.5944	\$0.0372	\$2.5358	↑	\$2.3983	↔	\$2.2808	↑	67	Oct 24	\$2.1802	\$0.0148	6,438	13,088
Mon, Feb 26,	\$2.5572	\$0.0479	\$2.5131	↑	\$2.3818	↔	\$2.2685	↑	67	Nov 24	\$2.1172	\$0.0113	4,021	8,596
Fri, Feb 23,	\$2.5093	-\$0.0582	\$2.4913	↔	\$2.3703	↔	\$2.2586	↑	69	Dec 24	\$2.0706	\$0.0129	5,295	20,447
% Pos. Closes /5		Mon	Tues	Wed	Thurs	Fri				Jan 25	\$2.0444	\$0.0133	1,292	5,854
Prior 50 Days		57%	64%	55%	70%	27%				Feb 25	\$2.0406	\$0.0127	521	1,230

Rolling 50 Day Chart



Contract Closes



/ 1 Prior prices may reflect different contracts when there is a transition to the status of "Active Contract".

/ 2 Indicators of the simple moving averages (10, 20, & 40 day) are horizontal unless the trend is statistically significant. (critical t value is 95 percentile)

/ 3 Proprietary indicator implying if the price trend is upward, downward or insignificant.

/ 4 Relative Strength Index (RSI) can indicate potential highs or lows of a trading range when the price trend is not significant. (RSI of 30 is low & 70 high)

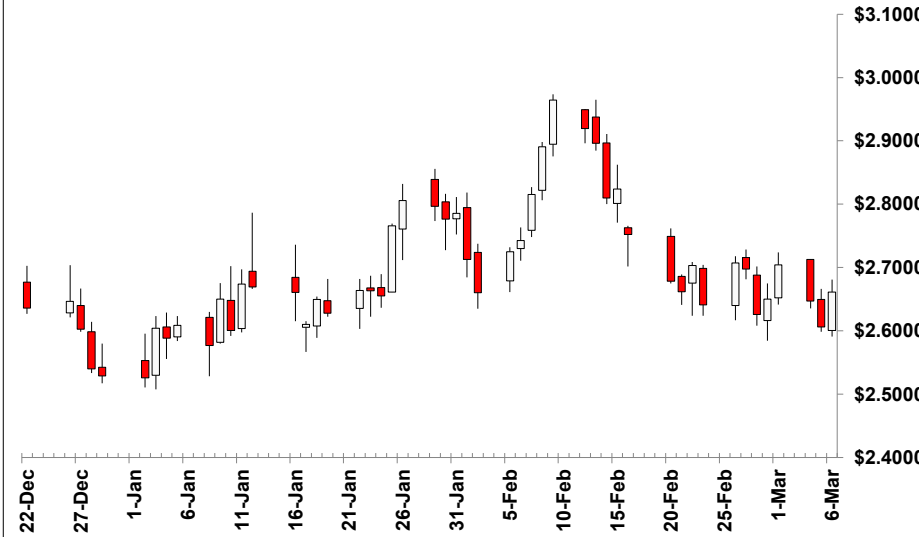
/ 5 Percentile of positive closes on particular weekdays. (prior 50 days)

NEW YORK HARBOR ULSD April 2024 - Active Contract - (\$/gal)

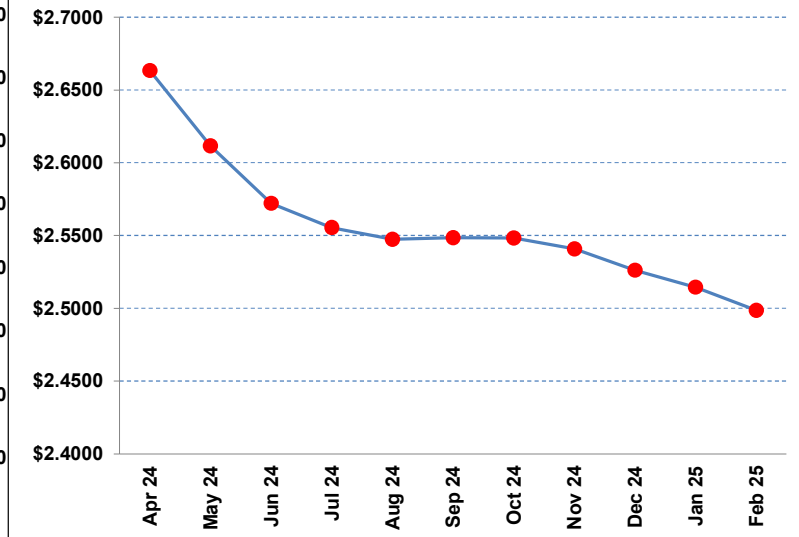
Wednesday, March 6, 2024

	Close /1	Change	10 MA /2	20 MA /2	40 MA /2	/3	RSI /4	Contract	Close	Change	Volume	Open Interest			
Wed, Mar 06,	\$2.6612	\$0.0547	\$2.6644	↔	\$2.7428	↔	↓	45	Apr 24	\$2.6633	\$0.0547	43,587	90,217		
Tue, Mar 05,	\$2.6065	-\$0.0407	\$2.6645	↔	\$2.7469	↔	↓	44	May 24	\$2.6115	\$0.0476	32,152	51,815		
Mon, Mar 04,	\$2.6472	-\$0.0570	\$2.6717	↔	\$2.7528	↔	↔	45	Jun 24	\$2.5721	\$0.0408	28,021	50,211		
Fri, Mar 01,	\$2.7042	\$0.0543	\$2.6822	↔	\$2.7535	↔	↔	46	Jul 24	\$2.5554	\$0.0367	8,523	20,021		
Thu, Feb 29,	\$2.6499	\$0.0239	\$2.6942	↓	\$2.7539	↔	↔	44	Aug 24	\$2.5474	\$0.0339	6,684	18,716		
Wed, Feb 28,	\$2.6260	-\$0.0717	\$2.7102	↓	\$2.7607	↔	↔	45	Sep 24	\$2.5485	\$0.0323	7,480	16,994		
Tue, Feb 27,	\$2.6977	-\$0.0096	\$2.7372	↓	\$2.7682	↔	↔	45	Oct 24	\$2.5483	\$0.0288	3,862	10,756		
Mon, Feb 26,	\$2.7073	\$0.0662	\$2.7594	↔	\$2.7731	↔	↔	44	Nov 24	\$2.5408	\$0.0282	1,523	8,218		
Fri, Feb 23,	\$2.6411	-\$0.0622	\$2.7851	↓	\$2.7781	↔	↑	45	Dec 24	\$2.5262	\$0.0301	5,024	22,464		
% Pos. Closes /5	Mon	Tues	Wed	Thurs	Fri										
Prior 50 Days	43%	27%	45%	70%	36%	Jan 25	\$2.5145	\$0.0265	534	5,814	Feb 25	\$2.4986	\$0.0314	335	1,863

Rolling 50 Day Chart



Contract Closes



/ 1 Prior prices may reflect different contracts when there is a transition to the status of "Active Contract".

/ 2 Indicators of the simple moving averages (10, 20, & 40 day) are horizontal unless the trend is statistically significant. (critical t value is 95 percentile)

/ 3 Proprietary indicator implying if the price trend is upward, downward or insignificant.

/ 4 Relative Strength Index (RSI) can indicate potential highs or lows of a trading range when the price trend is not significant. (RSI of 30 is low & 70 high)

/ 5 Percentile of positive closes on particular weekdays. (prior 50 days)

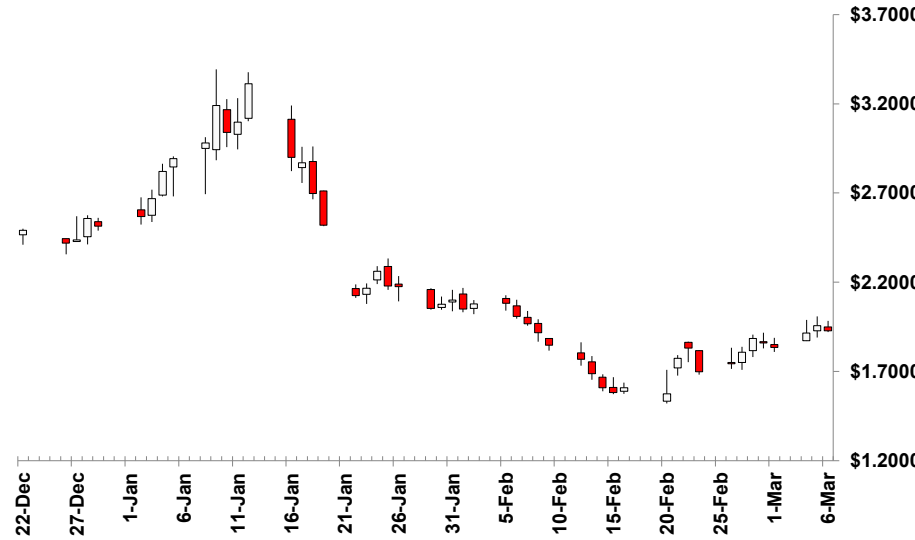


NATURAL GAS April 2024 - Active Contract - (\$/MMBtu)

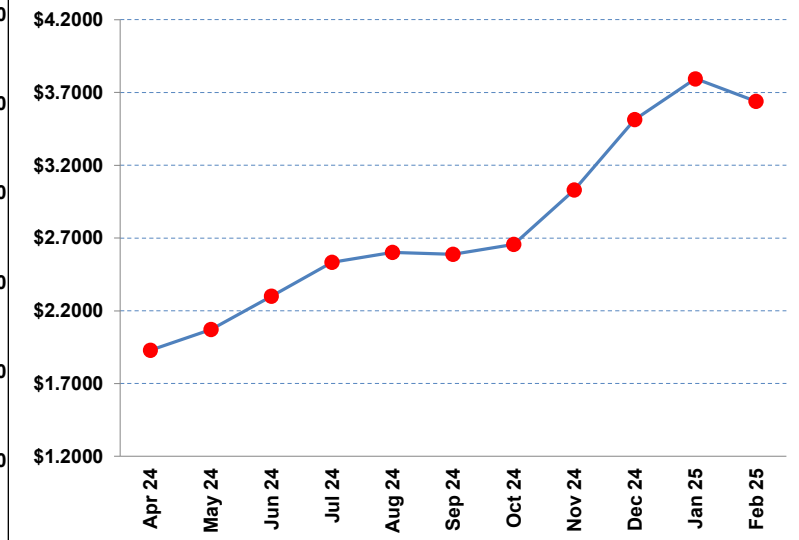
Wednesday, March 6, 2024

	Close /1	Change	10 MA /2	/2	20 MA /2	/2	40 MA /2	/2	/3	RSI /4		Contract	Close	Change	Volume	Open Interest
Wed, Mar 06,	\$1.928	-\$0.029	\$1.846	↔	\$1.790	↔	\$2.120	↓	↔	48		Apr 24	\$1.929	-\$0.029	142,113	261,074
Tue, Mar 05,	\$1.957	\$0.041	\$1.831	↑	\$1.794	↔	\$2.146	↓	↔	47		May 24	\$2.072	-\$0.029	82,936	288,960
Mon, Mar 04,	\$1.916	\$0.081	\$1.793	↑	\$1.800	↔	\$2.169	↔	↔	45		Jun 24	\$2.301	-\$0.041	30,652	76,451
Fri, Mar 01,	\$1.835	-\$0.025	\$1.762	↔	\$1.808	↔	\$2.192	↔	↔	43		Jul 24	\$2.533	-\$0.060	28,585	114,975
Thu, Feb 29,	\$1.860	-\$0.025	\$1.737	↑	\$1.819	↔	\$2.213	↔	↓	42		Aug 24	\$2.601	-\$0.062	15,546	44,882
Wed, Feb 28,	\$1.885	\$0.077	\$1.712	↑	\$1.831	↔	\$2.230	↔	↓	41		Sep 24	\$2.587	-\$0.060	18,147	102,384
Tue, Feb 27,	\$1.808	\$0.064	\$1.692	↔	\$1.841	↔	\$2.246	↔	↓	39		Oct 24	\$2.656	-\$0.055	30,361	111,063
Mon, Feb 26,	\$1.744	\$0.045	\$1.688	↔	\$1.853	↔	\$2.265	↔	↓	36		Nov 24	\$3.030	-\$0.049	9,396	48,144
Fri, Feb 23,	\$1.699	-\$0.133	\$1.698	↔	\$1.875	↓	\$2.282	↔	↓	33		Dec 24	\$3.513	-\$0.034	7,020	52,922
% Pos. Closes /5			Mon	Tues	Wed	Thurs	Fri					Jan 25	\$3.794	-\$0.032	8,388	74,351
Prior 50 Days			29%	55%	64%	30%	45%					Feb 25	\$3.639	-\$0.029	2,776	36,409

Rolling 50 Day Chart



Contract Closes



/ 1 Prior prices may reflect different contracts when there is a transition to the status of "Active Contract".

/ 2 Indicators of the simple moving averages (10, 20, & 40 day) are horizontal unless the trend is statistically significant. (critical t value is 95 percentile)

/ 3 Proprietary indicator implying if the price trend is upward, downward or insignificant.

/ 4 Relative Streight Index (RSI) can indicate potential highs or lows of a trading range when the price trend is not significant. (RSI of 30 is low & 70 high)

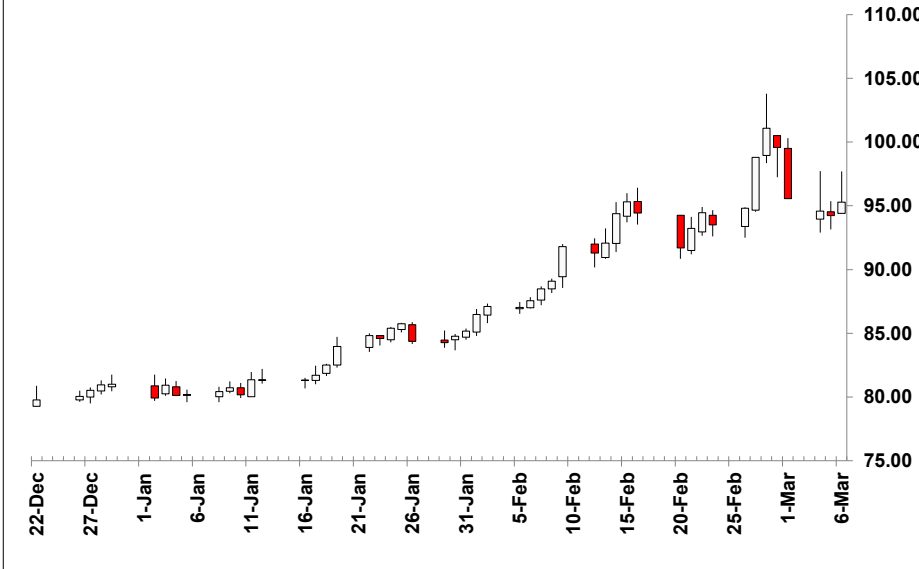
/ 5 Percentile of positive closes on particular weekdays. (prior 50 days)

COTTON #2 May 2024 - Active Contract - (cents/lb)

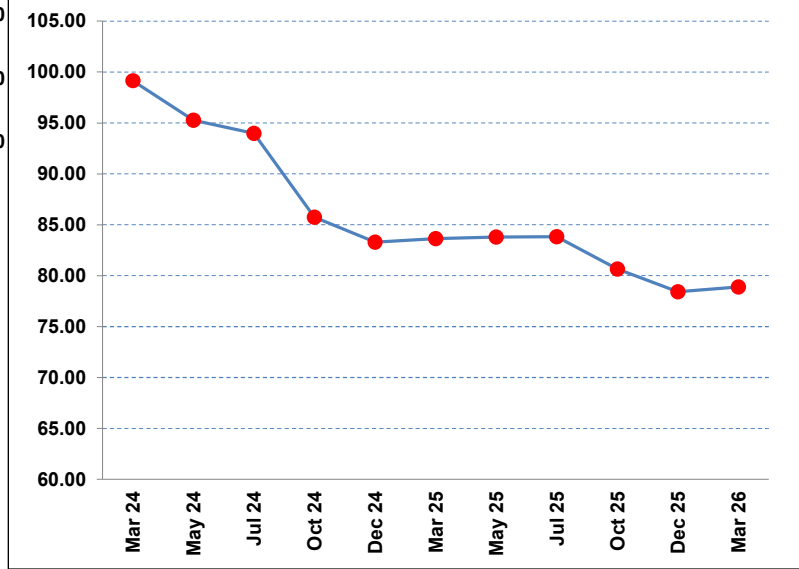
Wednesday, March 6, 2024

	Close /1	Change	10 MA /2	/2	20 MA /2	/2	40 MA /2	/2	/3	RSI /4	Contract	Close	Change	Volume	Open Interest
Wed, Mar 06,	95.28	1.04	96.19	↔	94.18	↑	89.10	↑	↑	60	Mar 24	99.14	1.04	0	3
Tue, Mar 05,	94.24	-0.34	95.98	↔	93.79	↔	88.73	↑	↑	65	May 24	95.28	1.04	22,019	131,201
Mon, Mar 04,	94.58	-0.99	95.73	↔	93.43	↔	88.38	↑	↑	69	Jul 24	93.99	0.92	12,147	70,348
Fri, Mar 01,	95.57	-4.00	95.71	↔	93.06	↑	88.02	↑	↑	71	Oct 24	85.73	0.27	35	70
Thu, Feb 29,	99.57	-1.51	95.69	↔	92.61	↑	87.65	↑	↑	72	Dec 24	83.30	0.11	7,467	61,664
Wed, Feb 28,	101.08	2.28	95.17	↑	91.89	↑	87.16	↑	↑	72	Mar 25	83.64	0.19	1,037	5,258
Tue, Feb 27,	98.80	4.00	94.26	↑	91.07	↑	86.66	↑	↑	70	May 25	83.78	0.20	229	1,161
Mon, Feb 26,	94.80	1.31	93.51	↑	90.34	↑	86.21	↑	↑	68	Jul 25	83.82	0.24	129	1,019
Fri, Feb 23,	93.49	-0.97	93.21	↔	89.82	↑	85.85	↑	↑	70	Oct 25	80.65	0.15	0	0
% Pos. Closes /5	Mon	Tues	Wed	Thurs	Fri	Dec 25	78.41	0.09	151	562					
Prior 50 Days	71%	64%	91%	80%	55%	Mar 26	78.89	0.02	0	14					

Rolling 50 Day Chart



Contract Closes



/ 1 Prior prices may reflect different contracts when there is a transition to the status of "Active Contract".

/ 2 Indicators of the simple moving averages (10, 20, & 40 day) are horizontal unless the trend is statistically significant. (critical t value is 95 percentile)

/ 3 Proprietary indicator implying if the price trend is upward, downward or insignificant.

/ 4 Relative Strength Index (RSI) can indicate potential highs or lows of a trading range when the price trend is not significant. (RSI of 30 is low & 70 high)

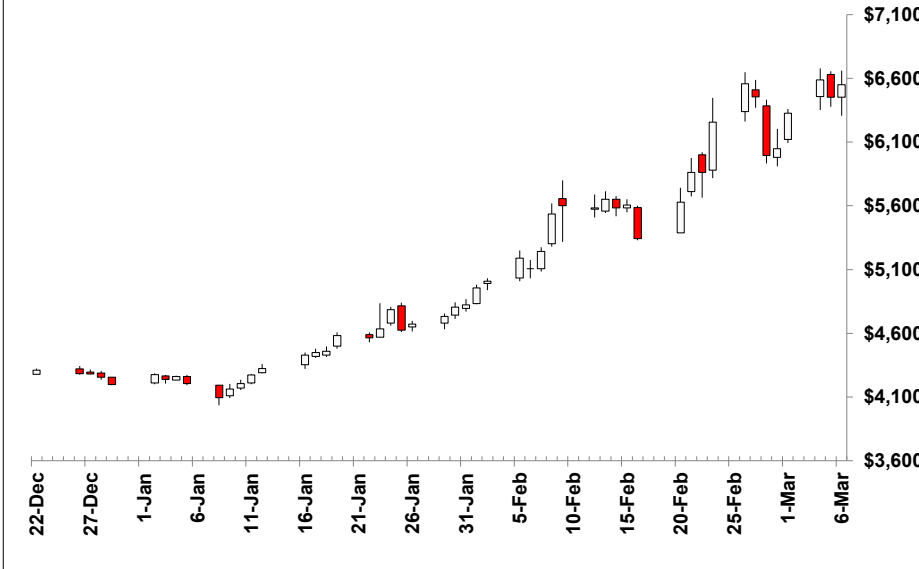
/ 5 Percentile of positive closes on particular weekdays. (prior 50 days)

COCOA May 2024 - Active Contract - (\$/MT)

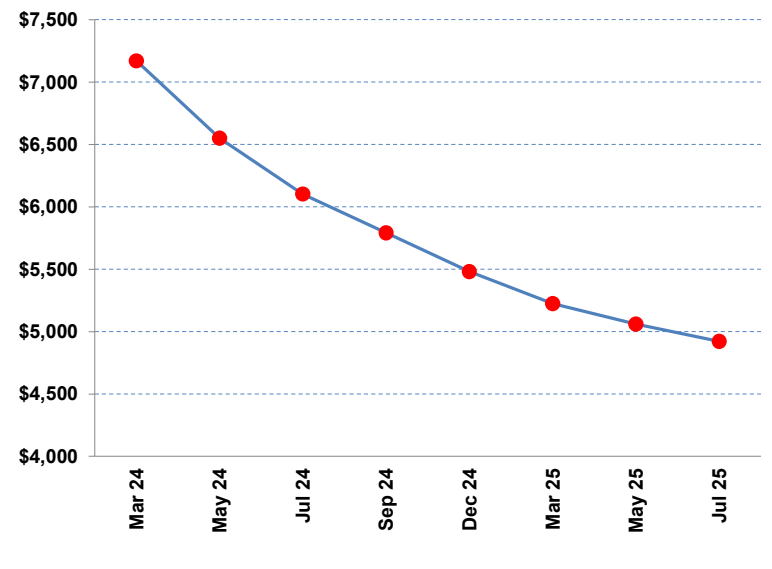
Wednesday, March 6, 2024

	Close /1	Change	10 MA /2	/2	20 MA /2	/2	40 MA /2	/2	/3	RSI /4	Contract	Close	Change	Volume	Open Interest
Wed, Mar 06,	\$6,549	\$99	\$6,308	↑	\$5,936	↑	\$5,287	↑	↑	68	Mar 24	\$7,170	\$200	3	22
Tue, Mar 05,	\$6,450	-\$136	\$6,240	↔	\$5,864	↑	\$5,226	↑	↑	67	May 24	\$6,549	\$99	21,282	79,634
Mon, Mar 04,	\$6,586	\$259	\$6,157	↑	\$5,801	↑	\$5,170	↑	↑	69	Jul 24	\$6,103	\$66	11,088	44,770
Fri, Mar 01,	\$6,327	\$278	\$6,033	↑	\$5,722	↑	\$5,112	↑	↑	71	Sep 24	\$5,792	\$39	8,582	34,029
Thu, Feb 29,	\$6,049	\$55	\$5,961	↔	\$5,653	↑	\$5,060	↑	↑	74	Dec 24	\$5,480	\$45	3,394	29,489
Wed, Feb 28,	\$5,994	-\$461	\$5,914	↔	\$5,592	↑	\$5,015	↑	↑	76	Mar 25	\$5,224	\$46	1,343	12,825
Tue, Feb 27,	\$6,455	-\$102	\$5,880	↔	\$5,532	↑	\$4,970	↑	↑	78	May 25	\$5,060	\$49	615	3,652
Mon, Feb 26,	\$6,557	\$301	\$5,793	↑	\$5,446	↑	\$4,915	↑	↑	76	Jul 25	\$4,921	\$47	150	2,471
Fri, Feb 23,	\$6,256	\$396	\$5,697	↑	\$5,352	↑	\$4,858	↑	↑	72					
% Pos. Closes /5	Mon	Tues	Wed	Thurs	Fri										
Prior 50 Days	71%	73%	64%	70%	64%										

Rolling 50 Day Chart



Contract Closes



/ 1 Prior prices may reflect different contracts when there is a transition to the status of "Active Contract".

/ 2 Indicators of the simple moving averages (10, 20, & 40 day) are horizontal unless the trend is statistically significant. (critical t value is 95 percentile)

/ 3 Proprietary indicator implying if the price trend is upward, downward or insignificant.

/ 4 Relative Strenght Index (RSI) can indicate potential highs or lows of a trading range when the price trend is not significant. (RSI of 30 is low & 70 high)

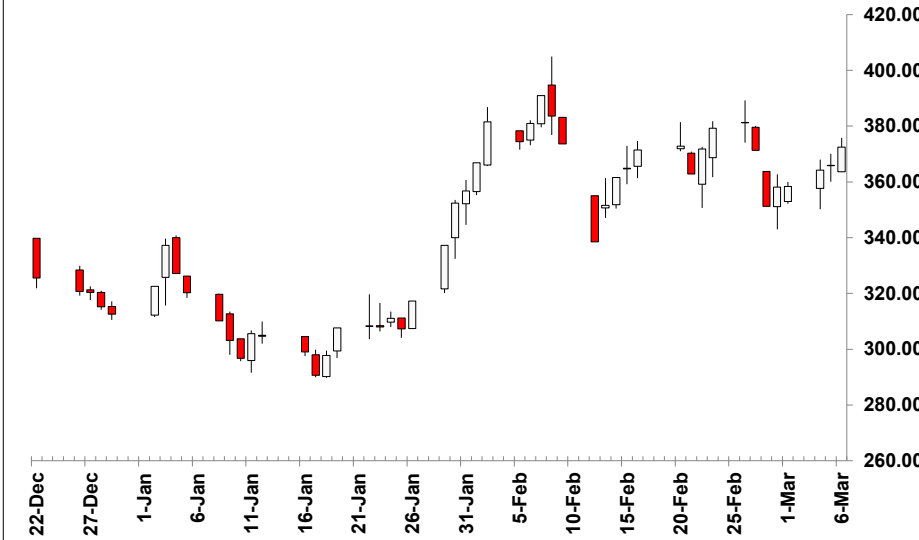
/ 5 Percentile of positive closes on particular weekdays. (prior 50 days)

ORANGE JUICE - A May 2024 - Active Contract - (cents/lb)

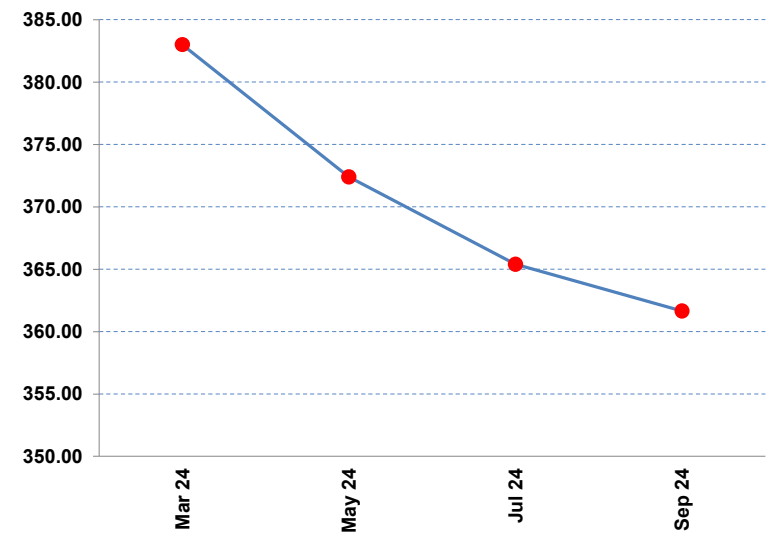
Wednesday, March 6, 2024

	Close /1	Change	10 MA /2	/2	20 MA /2	/2	40 MA /2	/2	/3	RSI /4	Contract	Close	Change	Volume	Open Interest
Wed, Mar 06,	372.40	6.60	367.37	↔	367.27	↔	346.32	↑	↑	52	Mar 24	383.00	20.20	9	297
Tue, Mar 05,	365.80	1.55	366.41	↔	367.70	↔	344.76	↔	↑	50	May 24	372.40	6.60	641	6,452
Mon, Mar 04,	364.25	5.85	367.11	↔	368.13	↔	343.62	↔	↑	51	Jul 24	365.40	4.50	162	1,054
Fri, Mar 01,	358.40	0.25	367.83	↔	368.99	↔	342.70	↔	↑	52	Sep 24	361.65	3.55	49	401
Thu, Feb 29,	358.15	6.90	368.45	↔	369.41	↔	342.17	↔	↑	54					
Wed, Feb 28,	351.25	-20.00	368.80	↔	369.34	↔	341.28	↔	↑	56					
Tue, Feb 27,	371.25	-10.00	368.83	↔	369.40	↔	340.31	↔	↔	57					
Mon, Feb 26,	381.25	2.05	365.56	↑	367.70	↑	338.91	↑	↔	58					
Fri, Feb 23,	379.20	7.45	364.80	↔	364.50	↑	337.39	↔	↔	57					
% Pos. Closes /5	Mon	Tues	Wed	Thurs	Fri										
Prior 50 Days	57%	45%	55%	50%	55%										

Rolling 50 Day Chart



Contract Closes



/ 1 Prior prices may reflect different contracts when there is a transition to the status of "Active Contract".

/ 2 Indicators of the simple moving averages (10, 20, & 40 day) are horizontal unless the trend is statistically significant. (critical t value is 95 percentile)

/ 3 Proprietary indicator implying if the price trend is upward, downward or insignificant.

/ 4 Relative Strenght Index (RSI) can indicate potential highs or lows of a trading range when the price trend is not significant. (RSI of 30 is low & 70 high)

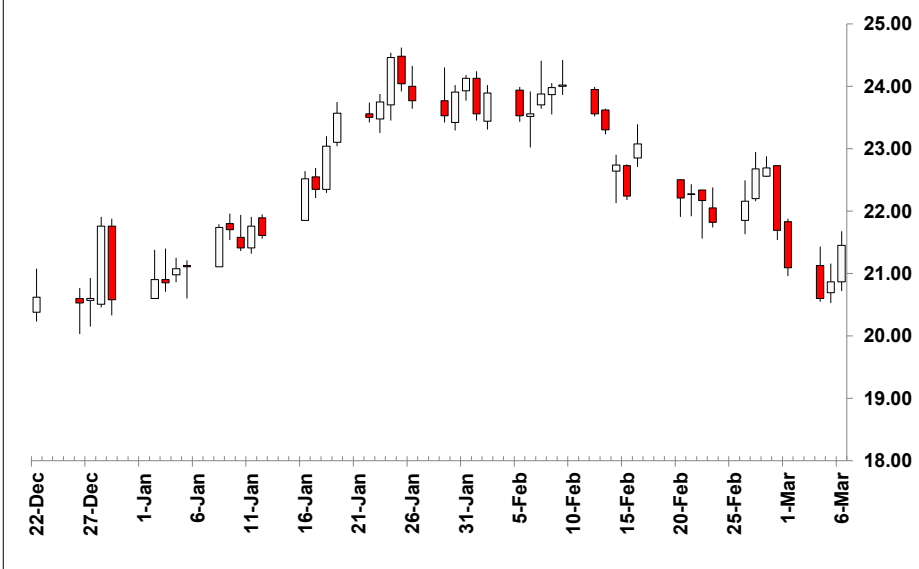
/ 5 Percentile of positive closes on particular weekdays. (prior 50 days)

SUGAR #11 WORLD May 2024 - Active Contract - (cents/lb)

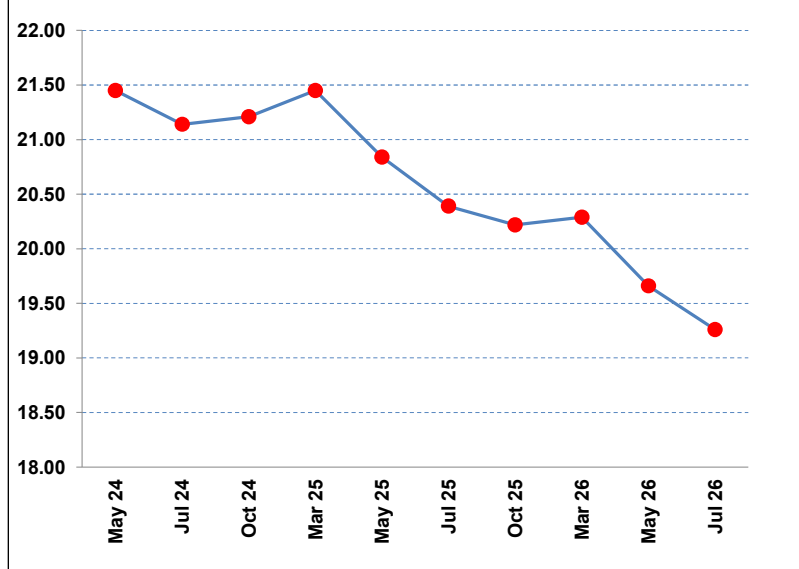
Wednesday, March 6, 2024

	Close /1	Change	10 MA /2	/2	20 MA /2	/2	40 MA /2	/2	/3	RSI /4	Contract	Close	Change	Volume	Open Interest
Wed, Mar 06,	21.45	0.58	21.72	↔	22.43	↓	22.80	↔	↓	37	May 24	21.45	0.58	58,046	304,125
Tue, Mar 05,	20.87	0.27	21.81	↔	22.53	↓	22.81	↔	↓	38	Jul 24	21.14	0.50	27,636	194,886
Mon, Mar 04,	20.60	-0.49	21.94	↓	22.66	↓	22.82	↔	↓	41	Oct 24	21.21	0.47	14,867	145,563
Fri, Mar 01,	21.09	-0.60	22.19	↓	22.83	↓	22.83	↔	↓	43	Mar 25	21.45	0.46	9,887	91,694
Thu, Feb 29,	21.69	-1.00	22.30	↔	22.95	↓	22.82	↔	↓	43	May 25	20.84	0.40	2,780	36,839
Wed, Feb 28,	22.69	0.01	22.41	↔	23.07	↔	22.80	↔	↔	44	Jul 25	20.39	0.34	1,654	25,928
Tue, Feb 27,	22.68	0.52	22.47	↔	23.14	↔	22.75	↔	↔	42	Oct 25	20.22	0.28	788	22,982
Mon, Feb 26,	22.16	0.34	22.56	↓	23.18	↔	22.73	↔	↔	41	Mar 26	20.29	0.23	181	9,845
Fri, Feb 23,	21.82	-0.35	22.74	↓	23.26	↓	22.69	↔	↔	42	May 26	19.66	0.20	33	3,724
Jul 26											Jul 26	19.26	0.18	16	4,079
% Pos. Closes /5	Mon	Tues	Wed	Thurs	Fri										
Prior 50 Days	29%	64%	73%	50%	45%										

Rolling 50 Day Chart



Contract Closes



/ 1 Prior prices may reflect different contracts when there is a transition to the status of "Active Contract".

/ 2 Indicators of the simple moving averages (10, 20, & 40 day) are horizontal unless the trend is statistically significant. (critical t value is 95 percentile)

/ 3 Proprietary indicator implying if the price trend is upward, downward or insignificant.

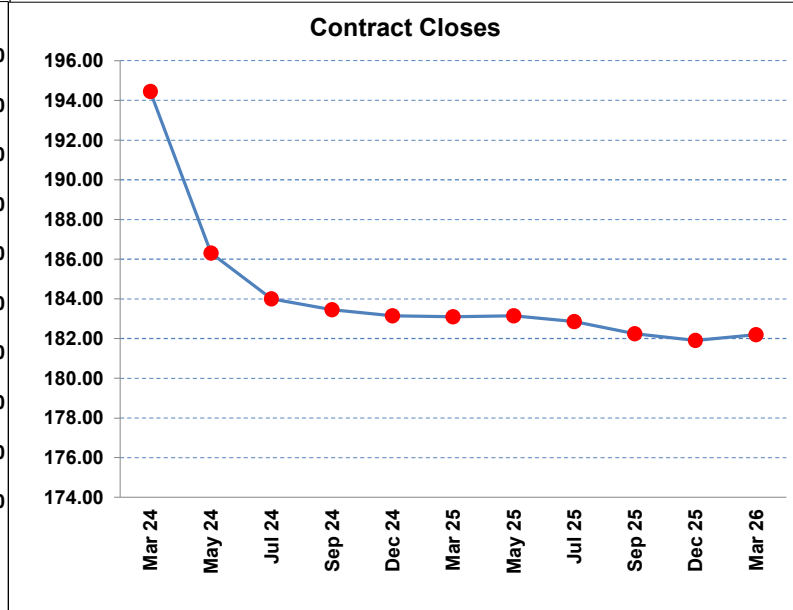
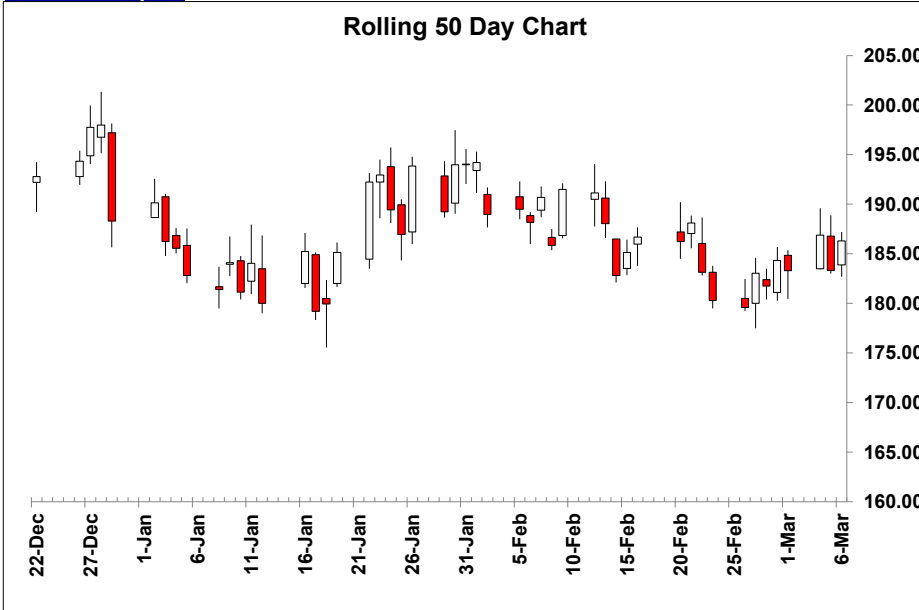
/ 4 Relative Streight Index (RSI) can indicate potential highs or lows of a trading range when the price trend is not significant. (RSI of 30 is low & 70 high)

/ 5 Percentile of positive closes on particular weekdays. (prior 50 days)

COFFEE May 2024 - Active Contract - (cents/lb)

Wednesday, March 6, 2024

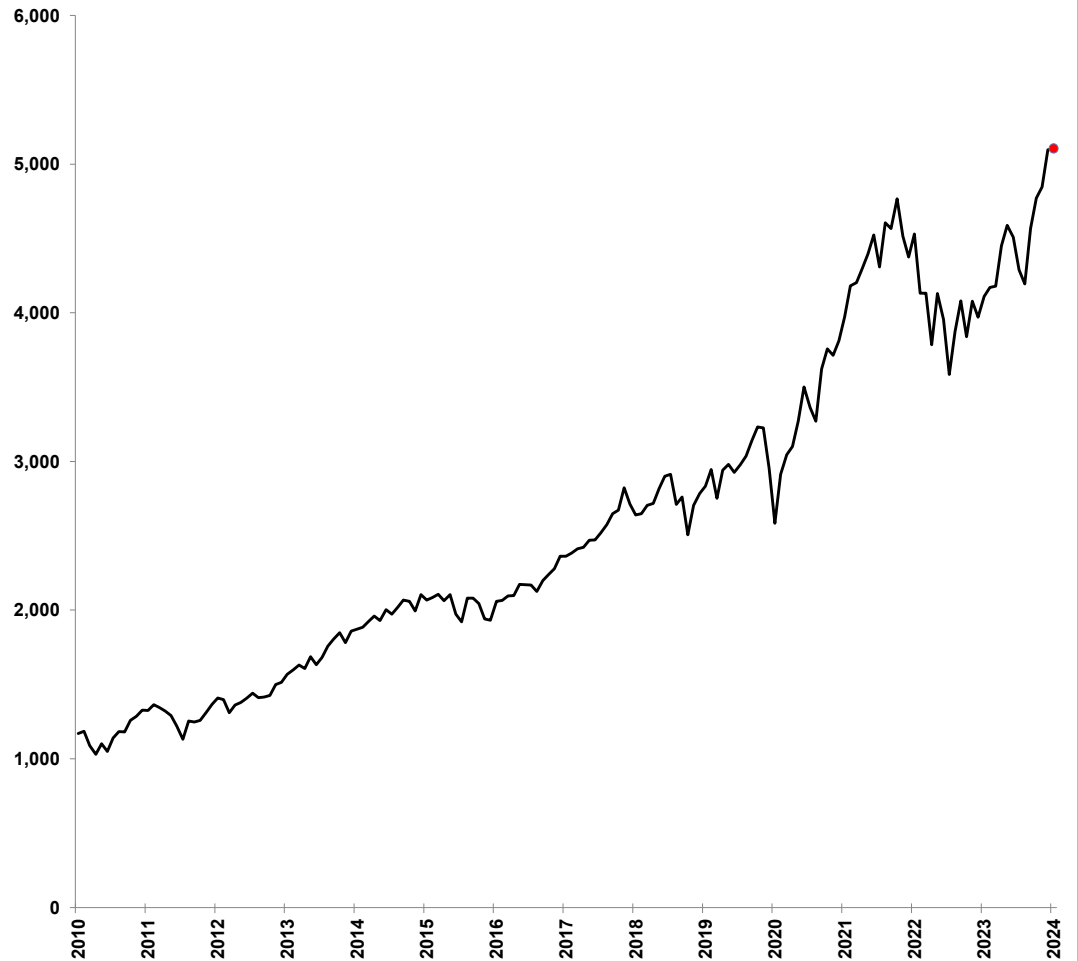
	Close /1	Change	10 MA /2	/2	20 MA /2	/2	40 MA /2	/2	/3	RSI /4	Contract	Close	Change	Volume	Open Interest
Wed, Mar 06,	186.30	2.95	183.21	↔	185.42	↔	186.52	↔	↓	49	Mar 24	194.45	-0.55	43	446
Tue, Mar 05,	183.35	-3.55	183.39	↔	185.51	↔	186.40	↔	↓	48	May 24	186.30	2.95	13,870	108,699
Mon, Mar 04,	186.90	3.60	183.68	↔	185.82	↔	186.38	↔	↓	47	Jul 24	184.00	2.60	9,860	49,390
Fri, Mar 01,	183.30	-1.05	183.66	↔	185.92	↔	186.35	↔	↓	45	Sep 24	183.45	2.60	3,307	27,147
Thu, Feb 29,	184.35	2.60	183.84	↔	186.47	↓	186.42	↔	↓	44	Dec 24	183.15	2.50	2,514	20,489
Wed, Feb 28,	181.75	-1.30	183.69	↔	186.95	↓	186.57	↔	↓	43	Mar 25	183.10	2.35	283	7,347
Tue, Feb 27,	183.05	3.45	184.32	↔	187.57	↓	186.73	↔	↓	45	May 25	183.15	2.30	130	1,317
Mon, Feb 26,	179.60	-0.70	185.13	↓	187.88	↓	187.11	↓	↓	45	Jul 25	182.85	2.25	91	233
Fri, Feb 23,	180.30	-2.85	186.32	↓	188.59	↓	187.56	↓	↓	47	Sep 25	182.25	2.15	82	619
% Pos. Closes /5		Mon	Tues	Wed	Thurs	Fri					Dec 25	181.90	2.10	35	1,166
Prior 50 Days		43%	64%	45%	50%	45%					Mar 26	182.20	2.10	1	211



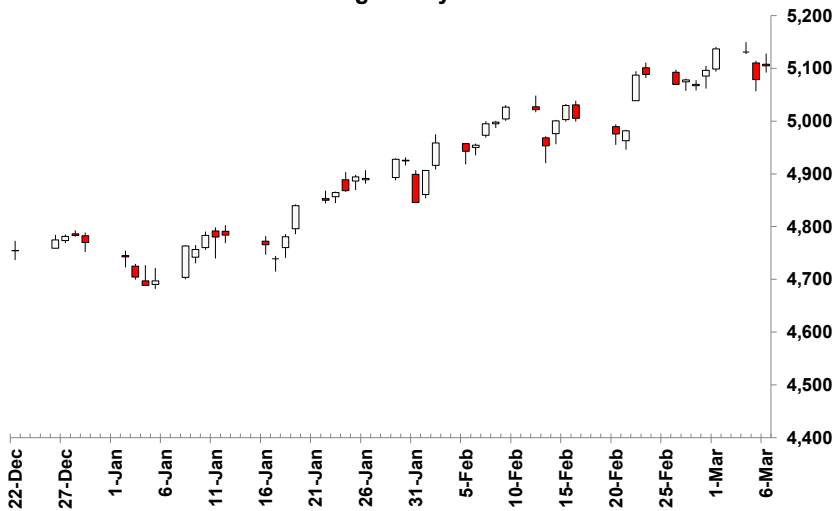
- / 1 Prior prices may reflect different contracts when there is a transition to the status of "Active Contract".
- / 2 Indicators of the simple moving averages (10, 20, & 40 day) are horizontal unless the trend is statistically significant. (critical t value is 95 percentile)
- / 3 Proprietary indicator implying if the price trend is upward, downward or insignificant.
- / 4 Relative Streight Index (RSI) can indicate potential highs or lows of a trading range when the price trend is not significant. (RSI of 30 is low & 70 high)
- / 5 Percentile of positive closes on particular weekdays. (prior 50 days)

	Close /1	Change	10 MA /2	/2	20 MA /2	/2	40 MA /2	/2 /3	RSI /4
Wed, Mar 06,	5,105	26	5,094	↔	5,046	↔	4,950	↑ ↑	66
Tue, Mar 05,	5,079	-52	5,082	↑	5,039	↑	4,941	↑ ↑	66
Mon, Mar 04,	5,131	-6	5,071	↑	5,032	↑	4,932	↑ ↑	67
Fri, Mar 01,	5,137	41	5,059	↑	5,024	↑	4,921	↑ ↑	67
Thu, Feb 29,	5,096	27	5,048	↔	5,012	↑	4,910	↑ ↑	66
Wed, Feb 28,	5,070	-8	5,039	↔	4,999	↑	4,901	↑ ↑	66
Tue, Feb 27,	5,078	9	5,027	↑	4,992	↑	4,893	↑ ↑	65
Mon, Feb 26,	5,070	-19	5,021	↔	4,985	↑	4,886	↑ ↑	64
Fri, Feb 23,	5,089	2	5,017	↔	4,976	↑	4,879	↑ ↑	63
% Pos. Closes /5	Mon	Tues	Wed	Thurs	Fri				
Prior 50 Days	29%	45%	64%	70%	64%				

Rolling 15 Year Chart: Month Ending Prices



Rolling 50 Day Chart



/1 Prior prices may reflect different contracts when there is a transition to the status of "Active Contract".

/2 Indicators of the simple moving averages (10, 20, & 40 day) are horizontal unless the trend is statistically significant. (critical t value is 95 percentile)

/3 Proprietary indicator implying if the price trend is upward, downward or insignificant.

/4 Relative Strenght Index (RSI) can indicate potential highs or lows of a trading range when the price trend is not significant. (RSI of 30 is low & 70 high)

/5 Percentile of positive closes on particular weekdays. (prior 50 days)

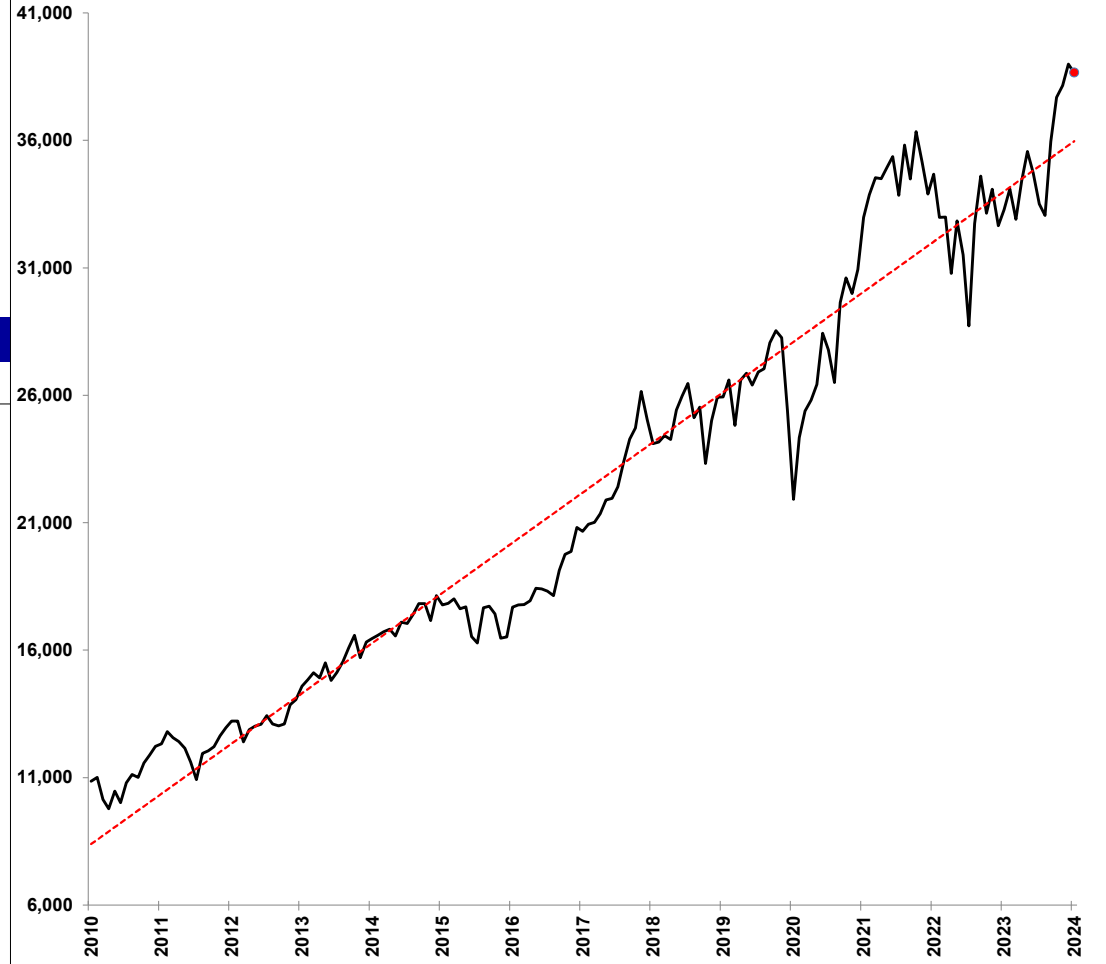


DOW JONES 30 INDUSTRIALS

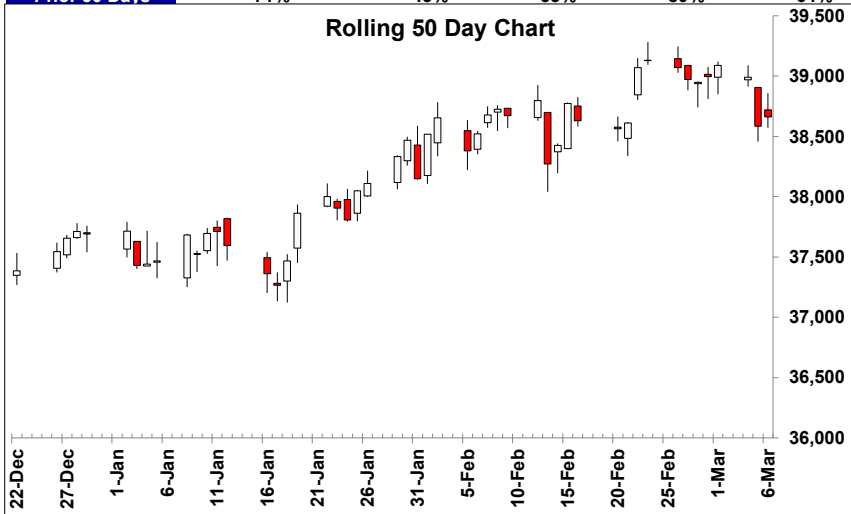
Wednesday, March 6, 2024

	Close /1	Change	10 MA /2	/2	20 MA /2	/2	40 MA /2	/2	/3	RSI /4	
Wed, Mar 06,	38,661	76	38,951	↓	38,783	↔	38,376	↑	↑	58	
Tue, Mar 05,	38,585	-405	38,946	↔	38,776	↔	38,352	↔	↑	59	
Mon, Mar 04,	38,990	-98	38,944	↔	38,766	↑	38,324	↑	↑	62	
Fri, Mar 01,	39,087	91	38,908	↔	38,749	↔	38,285	↑	↑	63	
Thu, Feb 29,	38,996	47	38,876	↔	38,721	↔	38,243	↑	↑	63	
Wed, Feb 28,	38,949	-23	38,819	↔	38,678	↑	38,211	↑	↑	64	
Tue, Feb 27,	38,972	-97	38,752	↑	38,654	↔	38,180	↑	↑	63	
Mon, Feb 26,	39,069	-62	38,734	↔	38,622	↑	38,148	↑	↑	62	
Fri, Feb 23,	39,132	62	38,694	↔	38,574	↑	38,113	↑	↑	61	
% Pos. Closes /5			Mon	Tues	Wed	Thurs	Fri				
Prior 50 Days			71%	45%	55%	80%	64%				

Rolling 15 Year Chart: Month Ending Prices



Rolling 50 Day Chart



/1 Prior prices may reflect different contracts when there is a transition to the status of "Active Contract".

/2 Indicators of the simple moving averages (10, 20, & 40 day) are horizontal unless the trend is statistically significant. (critical t value is 95 percentile)

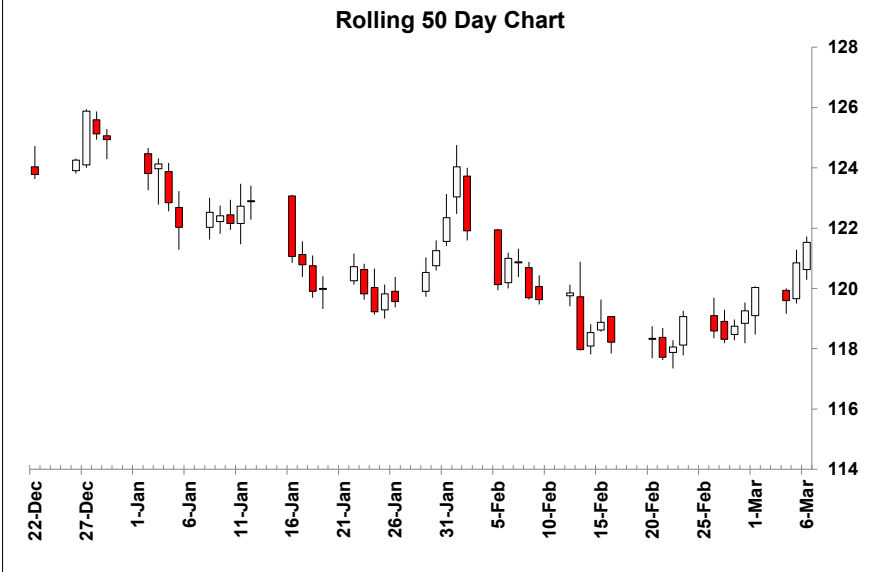
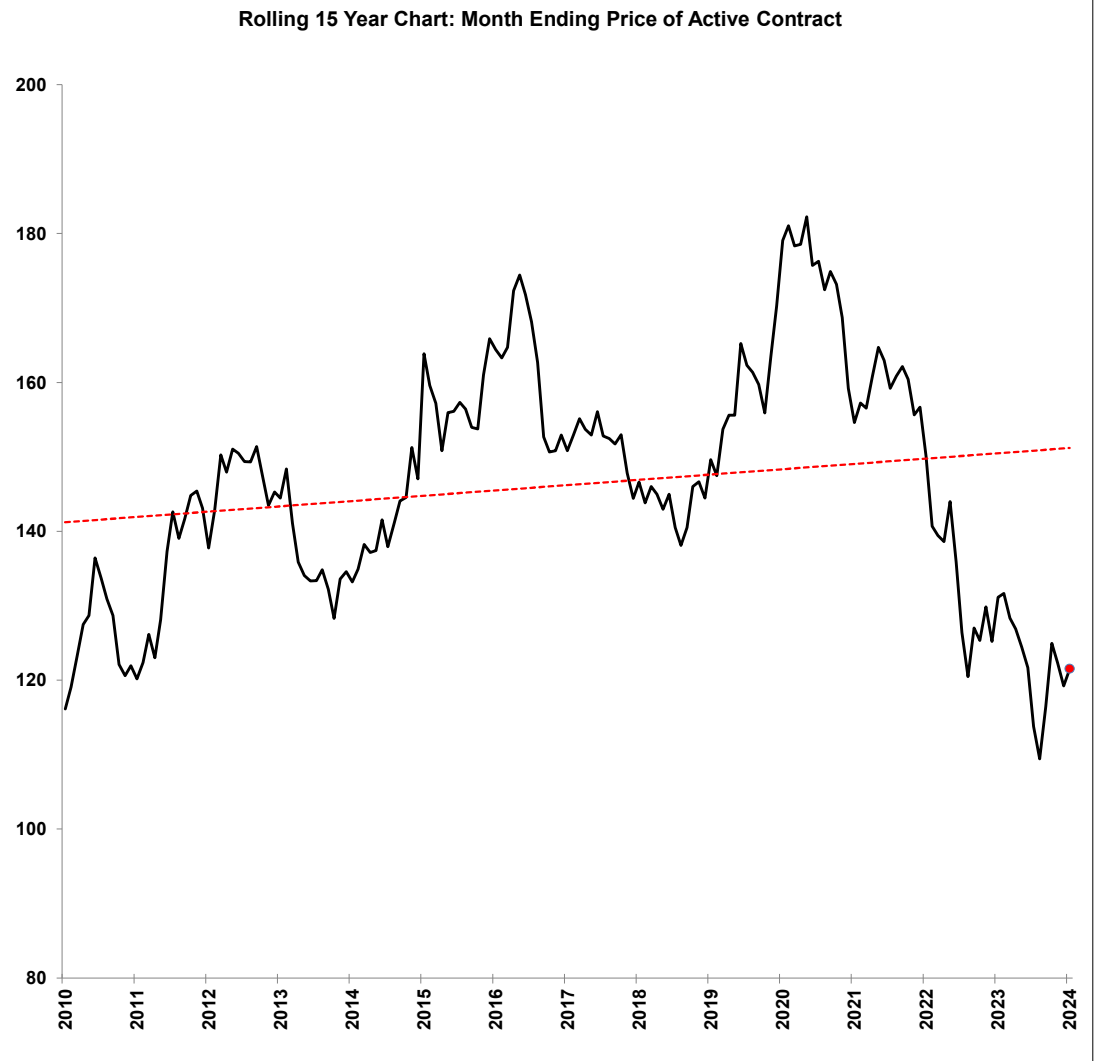
/3 Proprietary indicator implying if the price trend is upward, downward or insignificant.

/4 Relative Strength Index (RSI) can indicate potential highs or lows of a trading range when the price trend is not significant. (RSI of 30 is low & 70 high)

/5 Percentile of positive closes on particular weekdays. (prior 50 days)

	Close /1	Change	10 MA /2	20 MA /2	40 MA /2	/3	RSI /4
Wed, Mar 06,	121 17/32	22/32	119 13/32 ↑	119 6/32 ⇔	120 5/32 ⇔	⇔	54
Tue, Mar 05,	120 27/32	1 8/32	119 1/32 ↑	119 5/32 ⇔	120 6/32 ⇔	⇔	51
Mon, Mar 04,	119 19/32	- 14/32	118 25/32 ⇔	119 4/32 ⇔	120 6/32 ⇔	⇔	48
Fri, Mar 01,	120 1/32	25/32	118 20/32 ↑	119 8/32 ⇔	120 9/32 ⇔	↓	47
Thu, Feb 29,	119 8/32	16/32	118 17/32 ⇔	119 14/32 ↓	120 12/32 ↓	↓	45
Wed, Feb 28,	118 24/32	14/32	118 14/32 ⇔	119 19/32 ↓	120 16/32 ↓	↓	44
Tue, Feb 27,	118 10/32	- 9/32	118 12/32 ⇔	119 23/32 ⇔	120 21/32 ↓	↓	42
Mon, Feb 26,	118 19/32	- 15/32	118 17/32 ⇔	119 26/32 ⇔	120 26/32 ↓	↓	42
Fri, Feb 23,	119 2/32	1	118 20/32 ⇔	119 28/32 ⇔	121 ↓	↓	41

% Pos. Closes /5	Mon	Tues	Wed	Thurs	Fri
Prior 50 Days	57%	45%	55%	60%	27%



/ 1 Prior prices may reflect different contracts when there is a transition to the status of "Active Contract".
 / 2 Indicators of the simple moving averages (10, 20, & 40 day) are horizontal unless the trend is statistically significant. (critical t value is 95 percentile)
 / 3 Proprietary indicator implying if the price trend is upward, downward or insignificant.
 / 4 Relative Strength Index (RSI) can indicate potential highs or lows of a trading range when the price trend is not significant. (RSI of 30 is low & 70 high)
 / 5 Percentile of positive closes on particular weekdays. (prior 50 days)

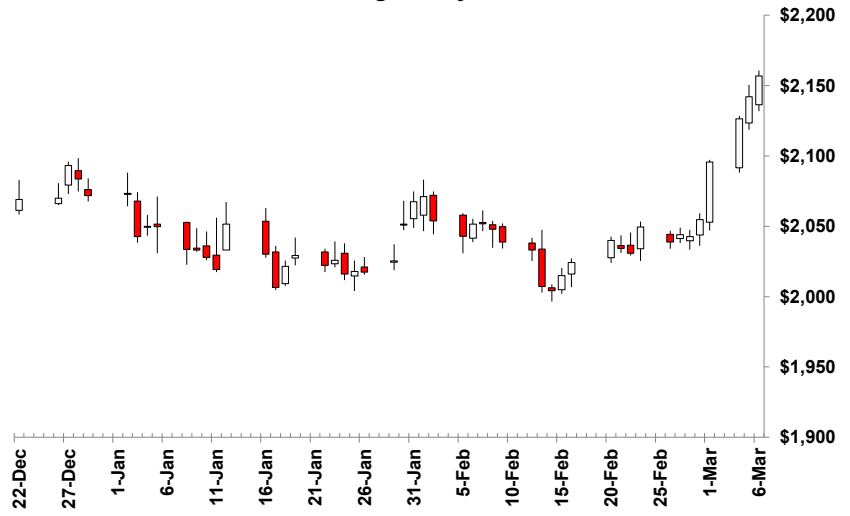
	Close /1	Change	10 MA /2	/2	20 MA /2	/2	40 MA /2	/2	/3	RSI /4
Wed, Mar 06,	\$2,157	\$15	\$2,078	↑	\$2,054	↑	\$2,044	↑	↑	70
Tue, Mar 05,	\$2,142	\$16	\$2,066	↑	\$2,049	↑	\$2,041	↑	↑	65
Mon, Mar 04,	\$2,126	\$31	\$2,056	↑	\$2,044	↑	\$2,039	↑	↑	61
Fri, Mar 01,	\$2,096	\$41	\$2,045	↑	\$2,040	↑	\$2,037	↑	↑	56
Thu, Feb 29,	\$2,055	\$12	\$2,037	↑	\$2,039	↔	\$2,035	↔	↔	54
Wed, Feb 28,	\$2,043	-\$1	\$2,032	↑	\$2,039	↔	\$2,036	↔	↓	52
Tue, Feb 27,	\$2,044	\$5	\$2,029	↑	\$2,040	↔	\$2,037	↔	↓	52
Mon, Feb 26,	\$2,039	-\$11	\$2,028	↔	\$2,039	↔	\$2,038	↓	↓	52
Fri, Feb 23,	\$2,049	\$19	\$2,028	↔	\$2,038	↔	\$2,039	↓	↓	51

% Pos. Closes /5	Mon	Tues	Wed	Thurs	Fri
Prior 50 Days	29%	64%	36%	60%	55%

Rolling 15 Year Chart: Month Ending Price of Active Contract



Rolling 50 Day Chart



/ 1 Prior prices may reflect different contracts when there is a transition to the status of "Active Contract".

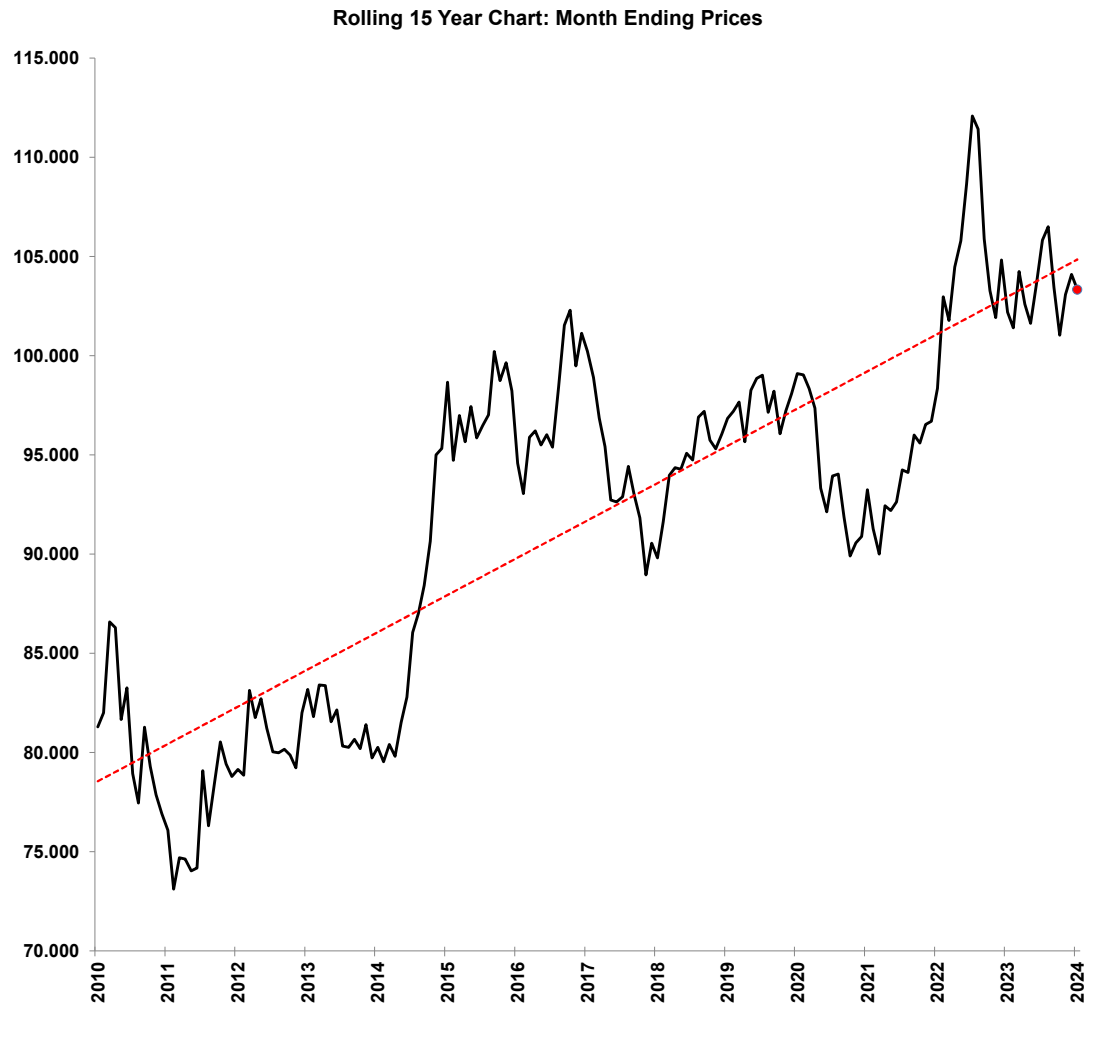
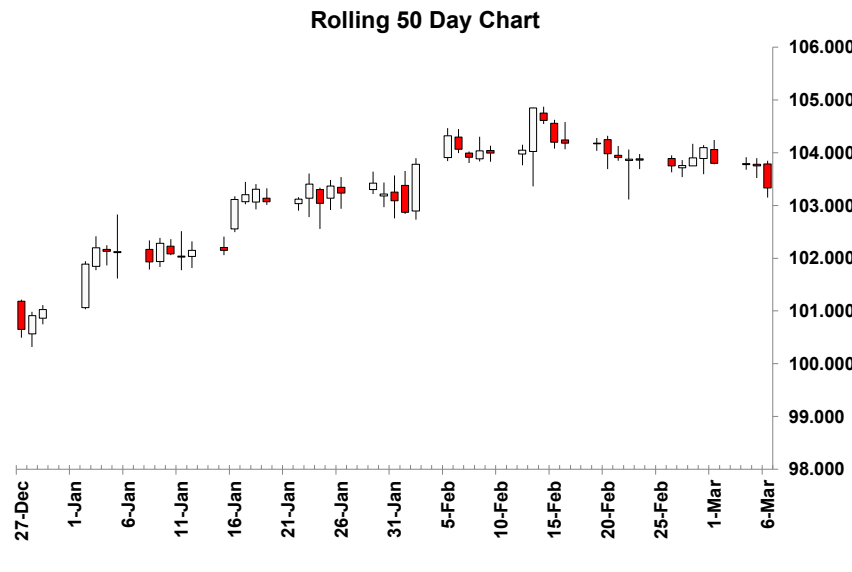
/ 2 Indicators of the simple moving averages (10, 20, & 40 day) are horizontal unless the trend is statistically significant. (critical t value is 95 percentile)

/ 3 Proprietary indicator implying if the price trend is upward, downward or insignificant.

/ 4 Relative Strenght Index (RSI) can indicate potential highs or lows of a trading range when the price trend is not significant. (RSI of 30 is low & 70 high)

/ 5 Percentile of positive closes on particular weekdays. (prior 50 days)

	Close /1	Change	10 MA /2	/2	20 MA /2	/2	40 MA /2	/2	/3	RSI /4	
Wed, Mar 06,	103.330	-0.423	103.791	↓	103.995	↓	103.594	↑	↔	50	
Tue, Mar 05,	103.753	-0.025	103.849	↔	104.024	↔	103.563	↑	↔	52	
Mon, Mar 04,	103.778	-0.021	103.871	↔	104.040	↔	103.526	↑	↔	52	
Fri, Mar 01,	103.799	-0.299	103.912	↓	104.067	↔	103.480	↑	↔	53	
Thu, Feb 29,	104.098	0.194	103.950	↔	104.066	↔	103.438	↑	↔	53	
Wed, Feb 28,	103.904	0.145	103.960	↔	104.005	↑	103.389	↑	↔	52	
Tue, Feb 27,	103.759	0.008	104.031	↓	103.964	↔	103.346	↔	↔	52	
Mon, Feb 26,	103.751	-0.108	104.140	↓	103.937	↔	103.300	↑	↑	53	
Fri, Feb 23,	103.859	-0.016	104.170	↔	103.920	↔	103.232	↑	↑	54	
% Pos. Closes /5			Mon	Tues	Wed	Thurs	Fri				
Prior 50 Days			56%	70%	27%	60%	40%				



/1 Prior prices may reflect different contracts when there is a transition to the status of "Active Contract".

/2 Indicators of the simple moving averages (10, 20, & 40 day) are horizontal unless the trend is statistically significant. (critical t value is 95 percentile)

/3 Proprietary indicator implying if the price trend is upward, downward or insignificant.

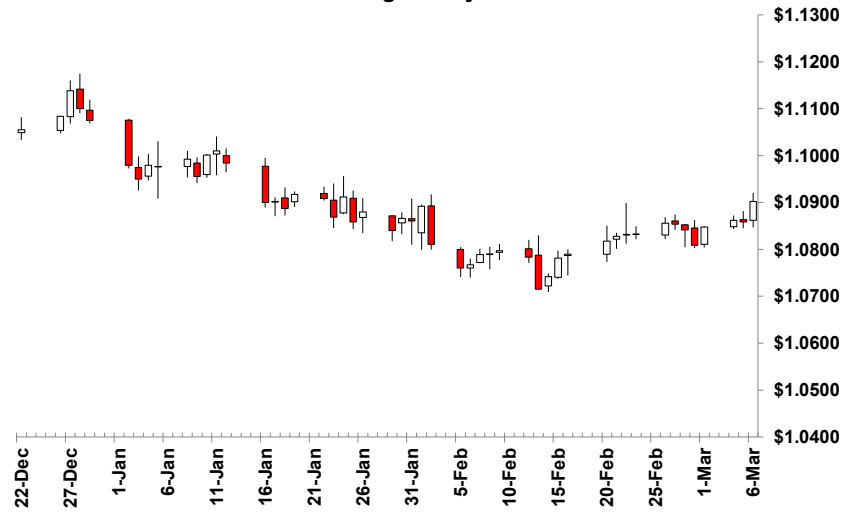
/4 Relative Strenght Index (RSI) can indicate potential highs or lows of a trading range when the price trend is not significant. (RSI of 30 is low & 70 high)

/5 Percentile of positive closes on particular weekdays. (prior 50 days)

	Close /1	Change	10 MA /2	/2	20 MA /2	/2	40 MA /2	/2	/3	RSI /4
Wed, Mar 06,	1.0903	0.0044	1.0850	↑	1.0817	↑	1.0853	↔	↔	53
Tue, Mar 05,	1.0859	-0.0004	1.0842	↔	1.0810	↑	1.0855	↔	↔	51
Mon, Mar 04,	1.0862	0.0014	1.0838	↑	1.0805	↑	1.0858	↔	↔	51
Fri, Mar 01,	1.0848	0.0039	1.0831	↑	1.0802	↔	1.0861	↔	↔	51
Thu, Feb 29,	1.0809	-0.0033	1.0824	↔	1.0805	↔	1.0864	↔	↔	51
Wed, Feb 28,	1.0842	-0.0011	1.0818	↑	1.0807	↔	1.0868	↔	↔	51
Tue, Feb 27,	1.0854	-0.0002	1.0805	↑	1.0808	↔	1.0874	↓	↔	51
Mon, Feb 26,	1.0856	0.0023	1.0798	↔	1.0808	↔	1.0880	↓	↔	50
Fri, Feb 23,	1.0833	0.0001	1.0792	↔	1.0809	↔	1.0887	↓	↔	48

% Pos. Closes /5	Mon	Tues	Wed	Thurs	Fri
Prior 50 Days	43%	36%	64%	60%	73%

Rolling 50 Day Chart



Rolling 15 Year Chart: Month Ending Prices



/ 1 Prior prices may reflect different contracts when there is a transition to the status of "Active Contract".

/ 2 Indicators of the simple moving averages (10, 20, & 40 day) are horizontal unless the trend is statistically significant. (critical t value is 95 percentile)

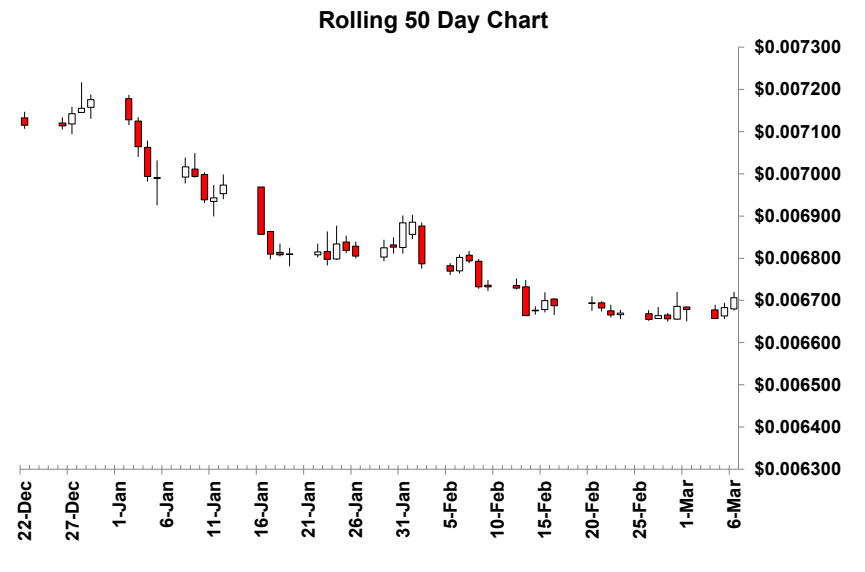
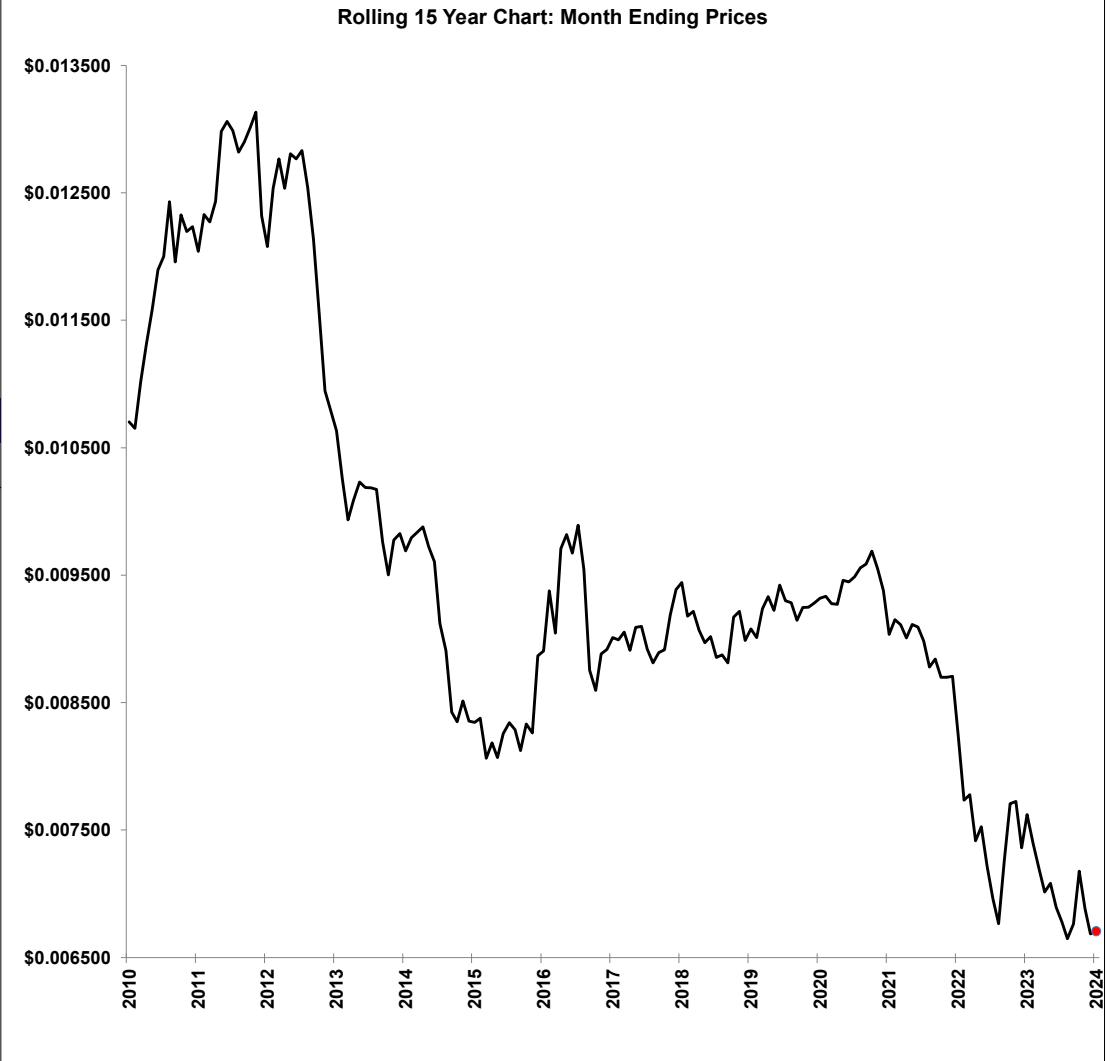
/ 3 Proprietary indicator implying if the price trend is upward, downward or insignificant.

/ 4 Relative Strenght Index (RSI) can indicate potential highs or lows of a trading range when the price trend is not significant. (RSI of 30 is low & 70 high)

/ 5 Percentile of positive closes on particular weekdays. (prior 50 days)

	Close /1	Change	10 MA /2	20 MA /2	40 MA /2	/3	RSI /4
Wed, Mar 06,	0.006707	0.000023	0.006672 ↑	0.006691 ↓	0.006770 ↓	↓	41
Tue, Mar 05,	0.006684	0.000026	0.006670 ↔	0.006695 ↓	0.006778 ↓	↓	38
Mon, Mar 04,	0.006658	-0.000021	0.006671 ↓	0.006700 ↓	0.006785 ↓	↓	37
Fri, Mar 01,	0.006679	-0.000007	0.006674 ↔	0.006706 ↓	0.006794 ↓	↓	36
Thu, Feb 29,	0.006686	0.000030	0.006676 ↔	0.006717 ↓	0.006803 ↓	↓	35
Wed, Feb 28,	0.006657	-0.000008	0.006675 ↔	0.006726 ↓	0.006814 ↓	↓	33
Tue, Feb 27,	0.006665	0.000009	0.006676 ↔	0.006735 ↓	0.006827 ↓	↓	34
Mon, Feb 26,	0.006655	-0.000015	0.006682 ↓	0.006743 ↓	0.006840 ↓	↓	34
Fri, Feb 23,	0.006670	0.000004	0.006690 ↓	0.006750 ↔	0.006852 ↓	↓	34

% Pos. Closes /5	Mon	Tues	Wed	Thurs	Fri
Prior 50 Days	43%	36%	45%	50%	27%



/ 1 Prior prices may reflect different contracts when there is a transition to the status of "Active Contract".

/ 2 Indicators of the simple moving averages (10, 20, & 40 day) are horizontal unless the trend is statistically significant. (critical t value is 95 percentile)

/ 3 Proprietary indicator implying if the price trend is upward, downward or insignificant.

/ 4 Relative Strength Index (RSI) can indicate potential highs or lows of a trading range when the price trend is not significant. (RSI of 30 is low & 70 high)

/ 5 Percentile of positive closes on particular weekdays. (prior 50 days)