

Active Contracts /1	Mon May 22	Change	Fri May 19	Thu May 18	Wed May 17	Tue May 16	Mon May 15	Average Prior 5 Days
GRAIN FUTURES								
CORN July 2023 (\$/bu)	\$5.7100	\$0.1650	\$5.5450	\$5.5525	\$5.6150	\$5.8125	\$5.9250	\$5.6900
WHEAT July 2023 (\$/bu)	\$6.0625	\$0.0125	\$6.0500	\$6.1175	\$6.2550	\$6.4750	\$6.6075	\$6.3010
HARD RED WINTER WHEAT July 2023	\$8.2575	\$0.0150	\$8.2425	\$8.5700	\$8.8550	\$8.9525	\$8.9825	\$8.7205
HARD RED SPRING WHEAT July 2023	\$8.0950	\$0.0550	\$8.0400	\$8.2850	\$8.5975	\$8.7875	\$8.7325	\$8.4885
OATS July 2023 (\$/bu)	\$3.2225	-\$0.1550	\$3.3775	\$3.4300	\$3.4500	\$3.4075	\$3.3525	\$3.4035
ROUGH RICE July 2023 (\$/cwt)	\$17.065	-\$0.270	\$17.335	\$17.510	\$17.410	\$17.855	\$18.485	\$17.719
OILSEED FUTURES								
SOYBEANS July 2023 (\$/bu)	\$13.4125	\$0.3400	\$13.0725	\$13.3325	\$13.3700	\$13.6400	\$14.0075	\$13.4845
SOYBEAN MEAL July 2023 (\$/short ton)	\$412.20	\$3.10	\$409.10	\$414.10	\$425.30	\$426.90	\$430.90	\$421.26
SOYBEAN OIL July 2023 (cents/lb)	48.77	1.50	47.27	47.29	46.41	47.45	49.69	47.62
CANOLA July 2023 (CAD/MT)	697.4	-5.5	702.9	714.1	729.2	730.8	712.9	718.0
LIVESTOCK FUTURES								
LIVE CATTLE August 2023 (\$/cwt)	\$163.60	-\$0.70	\$164.30	\$163.63	\$163.13	\$162.48	\$164.33	\$163.57
FEEDER CATTLE August 2023 (\$/cwt)	\$234.90	-\$0.20	\$235.10	\$234.50	\$231.15	\$231.48	\$231.05	\$232.66
LEAN HOGS June 2023 (\$/cwt)	\$81.83	-\$1.20	\$83.03	\$85.30	\$84.88	\$87.20	\$86.15	\$85.31
ENERGY FUTURES								
CRUDE OIL July 2023 (\$/barrel)	\$72.11	\$0.42	\$71.69	\$71.86	\$72.83	\$70.86	\$71.11	\$71.67
RBOB GASOLINE July 2023 (\$/gal)	\$2.5531	\$0.0554	\$2.4977	\$2.5049	\$2.5139	\$2.4294	\$2.4235	\$2.4739
ETHANOL June 2023 (\$/gal)	\$2.161	\$0.000	\$2.161	\$2.161	\$2.161	\$2.161	\$2.161	\$2.161
NEW YORK HARBOR ULSD July 2023	\$2.3584	\$0.0060	\$2.3524	\$2.3854	\$2.4226	\$2.3639	\$2.3780	\$2.3805
NATURAL GAS June 2023 (\$/MMBtu)	\$2.397	-\$0.188	\$2.585	\$2.592	\$2.365	\$2.376	\$2.375	\$2.459
FOOD AND FIBER FUTURES								
SUGAR #11 WORLD July 2023 (cents/lb)	25.99	0.38	25.61	25.61	25.91	26.07	26.29	25.90
COCOA July 2023 (\$/MT)	\$3,023	-\$45	\$3,068	\$2,991	\$3,000	\$2,995	\$2,980	\$3,007
COFFEE July 2023 (cents/lb)	189.20	-2.80	192.00	186.65	186.05	186.80	189.40	188.18
MILK CLASS III June 2023 (\$/cwt)	\$16.35	\$0.29	\$16.06	\$16.65	\$16.32	\$16.33	\$16.41	\$16.35
ORANGE JUICE - A July 2023 (cents/lb)	268.20	10.00	258.20	253.15	251.95	255.10	250.90	253.86
COTTON #2 July 2023 (cents/lb)	85.32	-1.40	86.72	86.66	86.94	83.38	82.37	85.21
FINANCIALS & ETC.								
DOW JONES 30 INDUSTRIALS	33,287	-140	33,427	33,536	33,421	33,012	33,349	33,349
S&P 500 INDEX	4,193	1	4,192	4,198	4,159	4,110	4,136	4,159
GOLD June 2023 (\$/oz)	\$1,974	-\$8	\$1,982	\$1,960	\$1,985	\$1,993	\$2,023	\$1,988
US TREASURY BOND June 2023	126 25/32	- 12/32	127 5/32	127 29/32	128 25/32	129 4/32	129 25/32	128 18/32
US DOLLAR INDEX June 2023	103.125	0.046	103.079	103.455	102.726	102.404	102.271	102.787
EURO FX June 2023	\$1.0830	\$0.0004	\$1.0826	\$1.0785	\$1.0858	\$1.0889	\$1.0896	\$1.0851

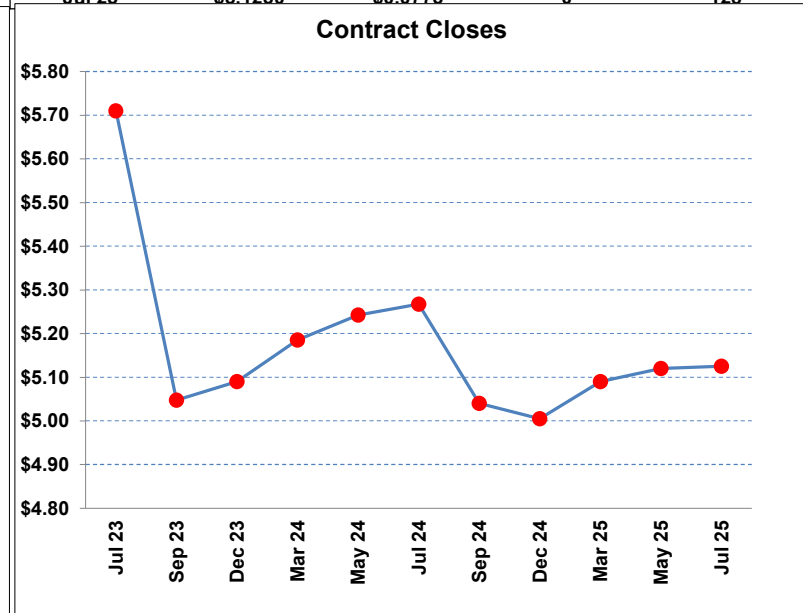
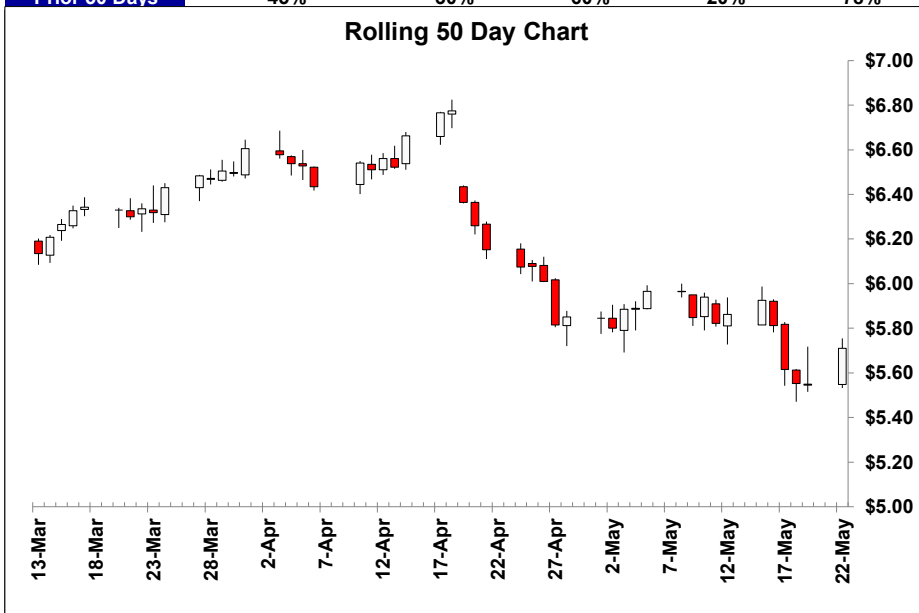
/ 1 Prices of the prior week may reflect different contracts when there is a transition to the status of "Active Contract".



CORN July 2023 - Active Contract - (\$/bu)

Monday, May 22, 2023

	Close /1	Change	10 MA /2	20 MA /2	40 MA /2	/3	RSI /4	Contract	Close	Change	Volume	Open Interest
Mon, May 22,	\$5.7100	\$0.1650	\$5.7633 ↔	\$5.8368 ↓	\$6.1640 ↓	↓	33	Jul 23	\$5.7100	\$0.1650	136,587	501,144
Fri, May 19,	\$5.5450	-\$0.0075	\$5.7888 ↓	\$5.8550 ↓	\$6.1820 ↓	↓	34	Sep 23	\$5.0475	\$0.1025	59,595	266,619
Thu, May 18,	\$5.5525	-\$0.0625	\$5.8308 ↓	\$5.8854 ↓	\$6.2013 ↓	↓	35	Dec 23	\$5.0900	\$0.0925	74,298	380,222
Wed, May 17,	\$5.6150	-\$0.1975	\$5.8645 ↓	\$5.9208 ↓	\$6.2209 ↓	↔	37	Mar 24	\$5.1850	\$0.0850	7,734	59,456
Tue, May 16,	\$5.8125	-\$0.1125	\$5.8915 ↔	\$5.9583 ↓	\$6.2380 ↔	↔	38	May 24	\$5.2425	\$0.0850	2,099	19,300
Mon, May 15,	\$5.9250	\$0.0625	\$5.8903 ↔	\$6.0064 ↓	\$6.2509 ↔	↓	38	Jul 24	\$5.2675	\$0.0825	2,113	28,929
Fri, May 12,	\$5.8625	\$0.0400	\$5.8823 ↔	\$6.0484 ↓	\$6.2614 ↔	↓	37	Sep 24	\$5.0400	\$0.0750	280	5,713
Thu, May 11,	\$5.8225	-\$0.1175	\$5.8810 ↔	\$6.0884 ↓	\$6.2730 ↔	↓	37	Dec 24	\$5.0050	\$0.0775	2,043	23,717
Wed, May 10,	\$5.9400	\$0.0925	\$5.8803 ↔	\$6.1234 ↔	\$6.2841 ↔	↓	37	Mar 25	\$5.0900	\$0.0775	1	599
% Pos. Closes /5	Mon	Tues	Wed	Thurs	Fri							
Prior 50 Days	45%	30%	60%	20%	78%							



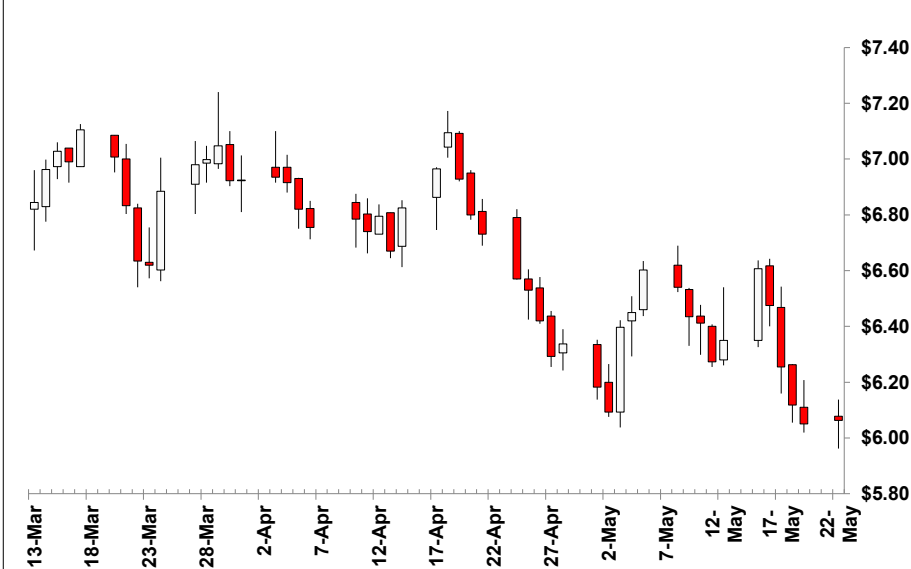
- / 1 Prior prices may reflect different contracts when there is a transition to the status of "Active Contract".
- / 2 Indicators of the simple moving averages (10, 20, & 40 day) are horizontal unless the trend is statistically significant. (critical t value is 95 percentile)
- / 3 Proprietary indicator implying if the price trend is upward, downward or insignificant.
- / 4 Relative Streight Index (RSI) can indicate potential highs or lows of a trading range when the price trend is not significant. (RSI of 30 is low & 70 high)
- / 5 Percentile of positive closes on particular weekdays. (prior 50 days)

WHEAT July 2023 - Active Contract - (\$/bu)

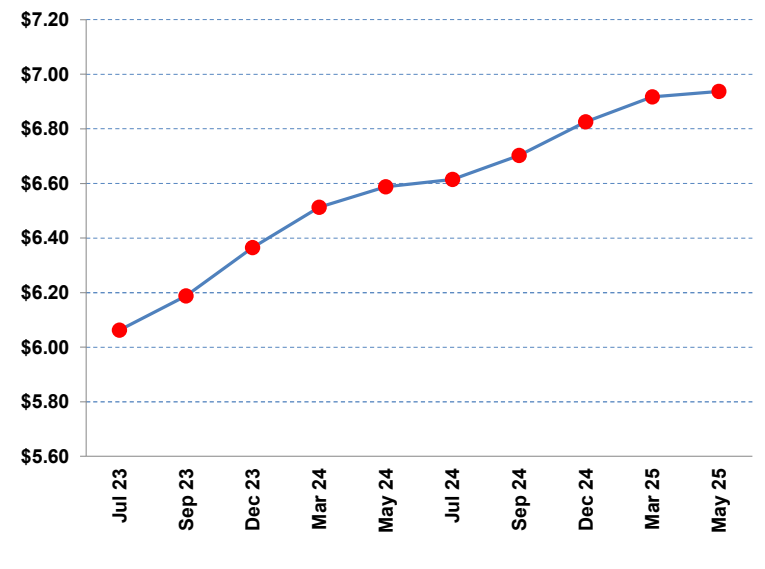
Monday, May 22, 2023

	Close /1	Change	10 MA /2	/2	20 MA /2	/2	40 MA /2	/2	/3	RSI /4	Contract	Close	Change	Volume	Open Interest
Mon, May 22,	\$6.0625	\$0.0125	\$6.3038	↔	\$6.3441	↓	\$6.6020	↓	↓	40	Jul 23	\$6.0625	\$0.0125	57,249	213,197
Fri, May 19,	\$6.0500	-\$0.0675	\$6.3515	↓	\$6.3695	↓	\$6.6226	↓	↔	43	Sep 23	\$6.1875	\$0.0175	21,151	68,584
Thu, May 18,	\$6.1175	-\$0.1375	\$6.4068	↓	\$6.4035	↓	\$6.6368	↔	↔	44	Dec 23	\$6.3650	\$0.0100	14,644	63,073
Wed, May 17,	\$6.2550	-\$0.2200	\$6.4400	↔	\$6.4376	↓	\$6.6498	↔	↔	44	Mar 24	\$6.5125	\$0.0050	4,363	17,835
Tue, May 16,	\$6.4750	-\$0.1325	\$6.4543	↔	\$6.4713	↓	\$6.6642	↔	↔	45	May 24	\$6.5875	-\$0.0050	1,538	4,230
Mon, May 15,	\$6.6075	\$0.2575	\$6.4160	↑	\$6.5023	↔	\$6.6775	↔	↔	44	Jul 24	\$6.6150	\$0.0025	697	5,333
Fri, May 12,	\$6.3500	\$0.0775	\$6.3735	↔	\$6.5201	↓	\$6.6899	↓	↓	43	Sep 24	\$6.7025	\$0.0075	33	584
Thu, May 11,	\$6.2725	-\$0.1400	\$6.3723	↔	\$6.5439	↔	\$6.7059	↓	↓	44	Dec 24	\$6.8250	\$0.0100	41	2,216
Wed, May 10,	\$6.4125	-\$0.0225	\$6.3743	↔	\$6.5638	↔	\$6.7248	↓	↓	45	Mar 25	\$6.9175	\$0.0050	0	138
May 25											May 25	\$6.9375	\$0.0050	0	16
% Pos. Closes /5	Mon	Tues	Wed	Thurs	Fri										
Prior 50 Days	36%	30%	40%	10%	67%										

Rolling 50 Day Chart



Contract Closes



/ 1 Prior prices may reflect different contracts when there is a transition to the status of "Active Contract".

/ 2 Indicators of the simple moving averages (10, 20, & 40 day) are horizontal unless the trend is statistically significant. (critical t value is 95 percentile)

/ 3 Proprietary indicator implying if the price trend is upward, downward or insignificant.

/ 4 Relative Streight Index (RSI) can indicate potential highs or lows of a trading range when the price trend is not significant. (RSI of 30 is low & 70 high)

/ 5 Percentile of positive closes on particular weekdays. (prior 50 days)

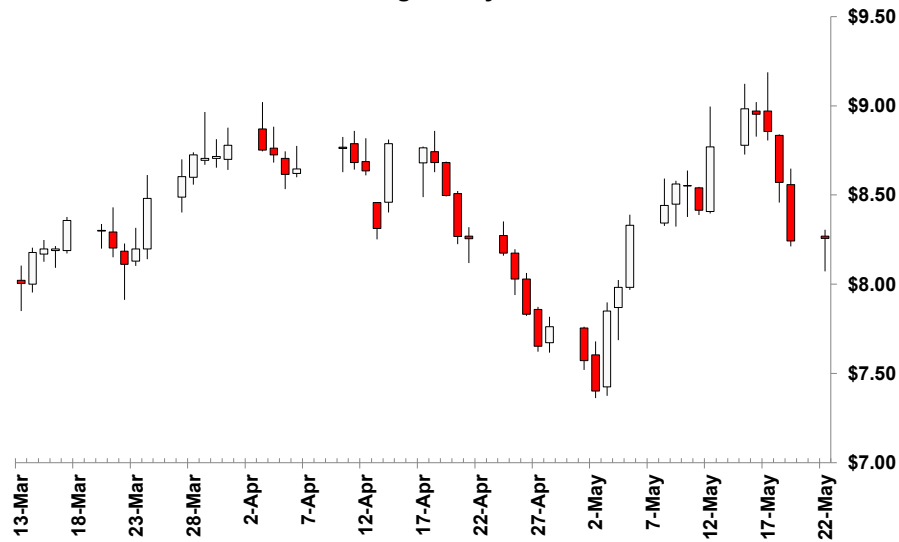
v

HARD RED WINTER WHEAT July 2023 - Active Contract - (\$/bu)

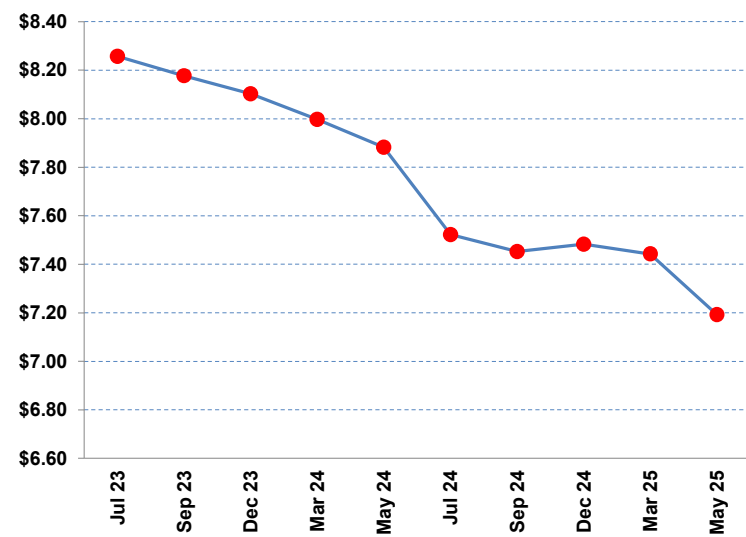
Monday, May 22, 2023

	Close /1	Change	10 MA /2	/2	20 MA /2	/2	40 MA /2	/2	/3	RSI /4	Contract	Close	Change	Volume	Open Interest
Mon, May 22,	\$8.2575	\$0.0150	\$8.6160	↔	\$8.2509	↔	\$8.4275	↔	↔	54	Jul 23	\$8.2575	\$0.0150	24,970	86,517
Fri, May 19,	\$8.2425	-\$0.3275	\$8.6345	↔	\$8.2468	↔	\$8.4331	↔	↔	58	Sep 23	\$8.1775	\$0.0225	14,964	42,052
Thu, May 18,	\$8.5700	-\$0.2850	\$8.6433	↔	\$8.2474	↔	\$8.4319	↔	↔	61	Dec 23	\$8.1025	\$0.0325	10,177	33,109
Wed, May 17,	\$8.8550	-\$0.0975	\$8.5845	↑	\$8.2323	↔	\$8.4205	↔	↔	61	Mar 24	\$7.9975	\$0.0375	3,581	13,486
Tue, May 16,	\$8.9525	-\$0.0300	\$8.4840	↑	\$8.2144	↔	\$8.4042	↔	↔	60	May 24	\$7.8825	\$0.0425	1,092	3,977
Mon, May 15,	\$8.9825	\$0.2125	\$8.3290	↑	\$8.2009	↔	\$8.3878	↔	↔	59	Jul 24	\$7.5225	\$0.0100	204	2,126
Fri, May 12,	\$8.7700	\$0.3550	\$8.1880	↑	\$8.1900	↔	\$8.3722	↔	↔	57	Sep 24	\$7.4525	\$0.0000	8	387
Thu, May 11,	\$8.4150	-\$0.1375	\$8.0873	↔	\$8.1909	↔	\$8.3579	↔	↔	56	Dec 24	\$7.4825	\$0.0025	0	308
Wed, May 10,	\$8.5525	-\$0.0100	\$8.0110	↔	\$8.1858	↔	\$8.3524	↔	↓	54	Mar 25	\$7.4425	\$0.0075	0	30
% Pos. Closes /5	Mon	Tues	Wed	Thurs	Fri										
Prior 50 Days	36%	30%	40%	50%	78%										

Rolling 50 Day Chart



Contract Closes



/ 1 Prior prices may reflect different contracts when there is a transition to the status of "Active Contract".

/ 2 Indicators of the simple moving averages (10, 20, & 40 day) are horizontal unless the trend is statistically significant. (critical t value is 95 percentile)

/ 3 Proprietary indicator implying if the price trend is upward, downward or insignificant.

/ 4 Relative Strength Index (RSI) can indicate potential highs or lows of a trading range when the price trend is not significant. (RSI of 30 is low & 70 high)

/ 5 Percentile of positive closes on particular weekdays. (prior 50 days)

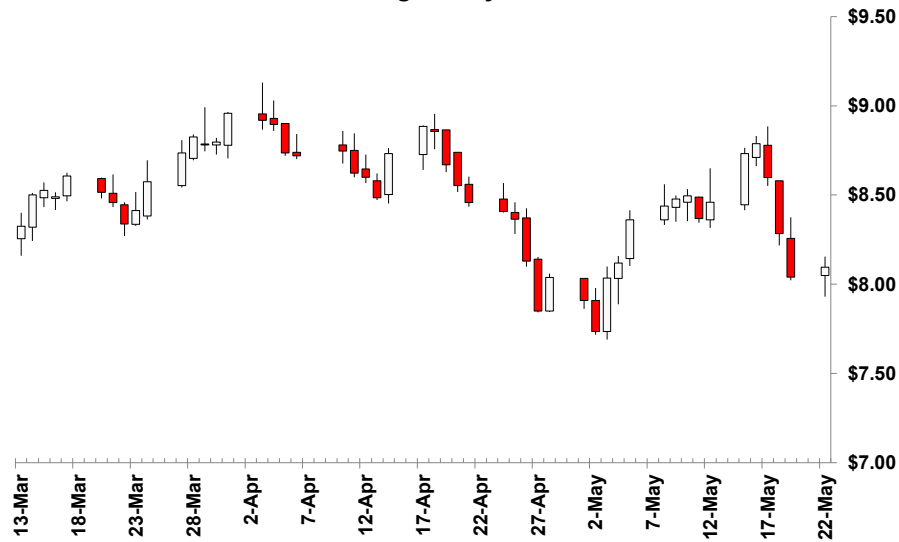
v

HARD RED SPRING WHEAT July 2023 - Active Contract - (\$/bu)

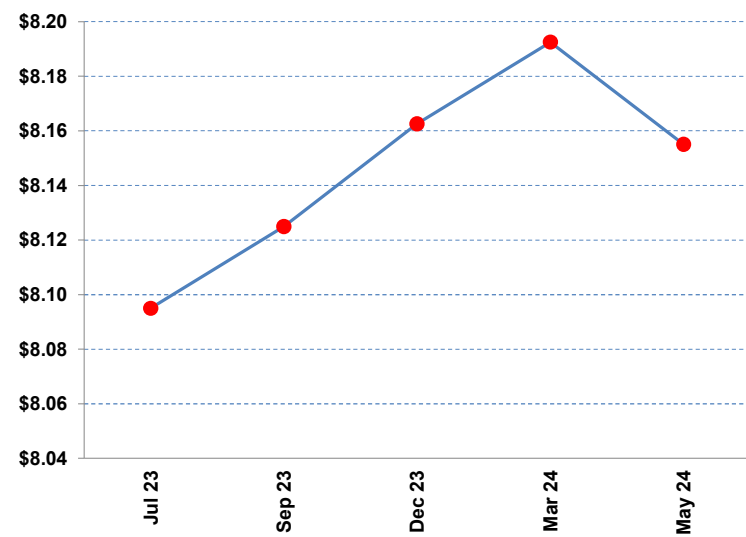
Monday, May 22, 2023

	Close /1	Change	10 MA /2	/2	20 MA /2	/2	40 MA /2	/2	/3	RSI /4	Contract	Close	Change	Volume	Open Interest
Mon, May 22,	\$8.0950	\$0.0550	\$8.4338	↔	\$8.2659	↔	\$8.4924	↔	↔	49	Jul 23	\$8.0950	\$0.0550	3,793	26,834
Fri, May 19,	\$8.0400	-\$0.2450	\$8.4680	↔	\$8.2815	↔	\$8.5044	↔	↔	52	Sep 23	\$8.1250	\$0.0550	2,697	22,973
Thu, May 18,	\$8.2850	-\$0.3125	\$8.5000	↔	\$8.3024	↔	\$8.5137	↔	↔	54	Dec 23	\$8.1625	\$0.0575	451	10,490
Wed, May 17,	\$8.5975	-\$0.1900	\$8.4835	↑	\$8.3158	↔	\$8.5150	↔	↔	55	Mar 24	\$8.1925	\$0.0600	60	1,874
Tue, May 16,	\$8.7875	\$0.0550	\$8.4273	↑	\$8.3194	↔	\$8.5115	↔	↔	55	May 24	\$8.1550	\$0.0650	5	99
Mon, May 15,	\$8.7325	\$0.2725	\$8.3220	↑	\$8.3228	↔	\$8.5047	↔	↔	53	Jul 24	\$7.9725	\$0.0750	2	31
Fri, May 12,	\$8.4600	\$0.0925	\$8.2398	↔	\$8.3304	↔	\$8.5016	↔	↔	52					
Thu, May 11,	\$8.3675	-\$0.1275	\$8.1975	↔	\$8.3440	↔	\$8.5023	↔	↓	51					
Wed, May 10,	\$8.4950	\$0.0175	\$8.1458	↑	\$8.3499	↔	\$8.5063	↔	↓	50					
% Pos. Closes /5	Mon	Tues	Wed	Thurs	Fri										
Prior 50 Days	55%	40%	30%	40%	78%										

Rolling 50 Day Chart



Contract Closes



/ 1 Prior prices may reflect different contracts when there is a transition to the status of "Active Contract".

/ 2 Indicators of the simple moving averages (10, 20, & 40 day) are horizontal unless the trend is statistically significant. (critical t value is 95 percentile)

/ 3 Proprietary indicator implying if the price trend is upward, downward or insignificant.

/ 4 Relative Strenght Index (RSI) can indicate potential highs or lows of a trading range when the price trend is not significant. (RSI of 30 is low & 70 high)

/ 5 Percentile of positive closes on particular weekdays. (prior 50 days)

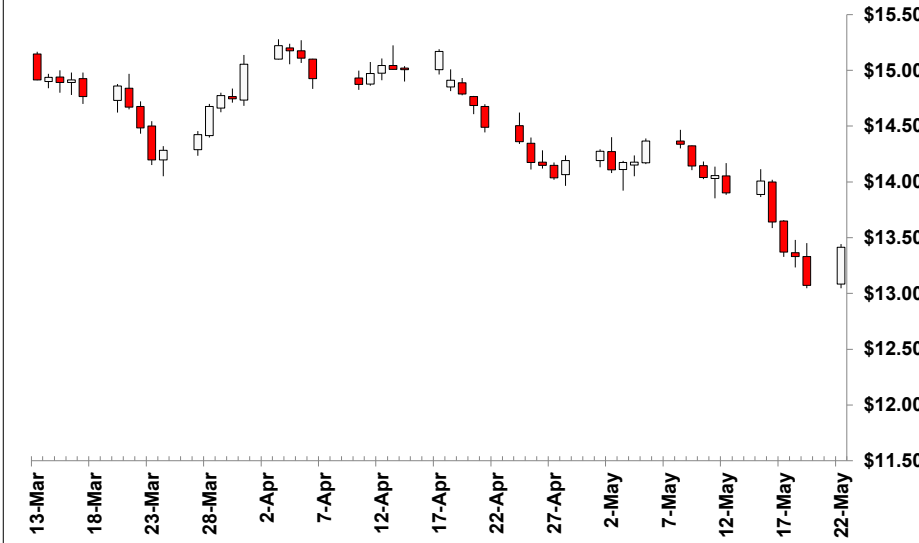
v

SOYBEANS July 2023 - Active Contract - (\$/bu)

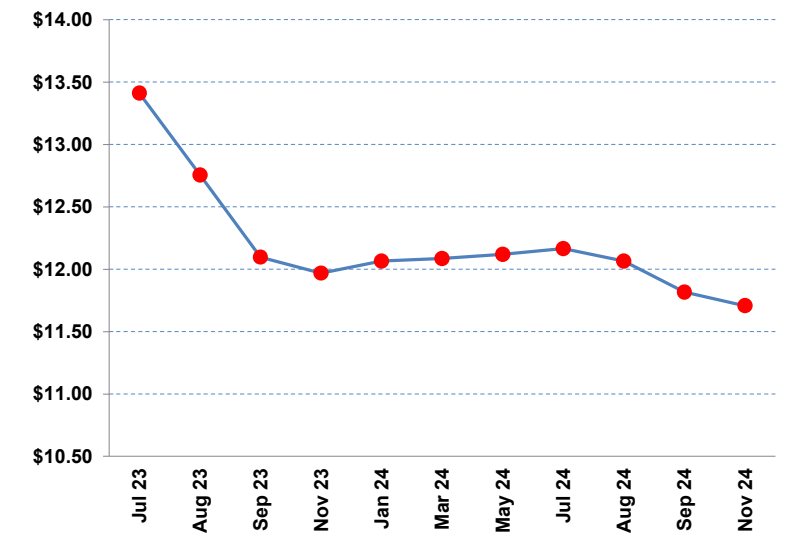
Monday, May 22, 2023

	Close /1	Change	10 MA /2	20 MA /2	40 MA /2	/3	RSI /4	Contract	Close	Change	Volume	Open Interest
Mon, May 22,	\$13.4125	\$0.3400	\$13.6973 ↔	\$13.9481 ↔	\$14.4093 ↔	↓	28	Jul 23	\$13.4125	\$0.3400	132,092	270,240
Fri, May 19,	\$13.0725	-\$0.2600	\$13.7898 ↓	\$13.9955 ↓	\$14.4310 ↓	↓	28	Aug 23	\$12.7550	\$0.2750	18,289	35,539
Thu, May 18,	\$13.3325	-\$0.0375	\$13.9190 ↓	\$14.0664 ↓	\$14.4591 ↔	↓	30	Sep 23	\$12.0975	\$0.2350	11,174	32,639
Wed, May 17,	\$13.3700	-\$0.2700	\$14.0035 ↓	\$14.1340 ↓	\$14.4879 ↓	↓	33	Nov 23	\$11.9700	\$0.2150	60,460	207,423
Tue, May 16,	\$13.6400	-\$0.3675	\$14.0840 ↓	\$14.2049 ↓	\$14.5204 ↓	↓	35	Jan 24	\$12.0650	\$0.2075	6,466	32,943
Mon, May 15,	\$14.0075	\$0.1075	\$14.1308 ↔	\$14.2684 ↓	\$14.5509 ↓	↓	36	Mar 24	\$12.0850	\$0.1950	6,010	33,814
Fri, May 12,	\$13.9000	-\$0.1550	\$14.1575 ↓	\$14.3265 ↓	\$14.5698 ↓	↓	38	May 24	\$12.1200	\$0.1775	3,763	14,958
Thu, May 11,	\$14.0550	\$0.0150	\$14.1868 ↔	\$14.3818 ↓	\$14.5952 ↓	↓	40	Jul 24	\$12.1650	\$0.1650	1,244	8,030
Wed, May 10,	\$14.0400	-\$0.1025	\$14.1850 ↔	\$14.4295 ↓	\$14.6161 ↓	↓	40	Aug 24	\$12.0650	\$0.1625	16	323
% Pos. Closes /5	Mon	Tues	Wed	Thurs	Fri							
Prior 50 Days	64%	40%	30%	30%	44%							
						Sep 24	\$11.8175	\$0.1525	21	520		
						Nov 24	\$11.7075	\$0.1475	437	7,456		

Rolling 50 Day Chart



Contract Closes



/ 1 Prior prices may reflect different contracts when there is a transition to the status of "Active Contract".

/ 2 Indicators of the simple moving averages (10, 20, & 40 day) are horizontal unless the trend is statistically significant. (critical t value is 95 percentile)

/ 3 Proprietary indicator implying if the price trend is upward, downward or insignificant.

/ 4 Relative Strenght Index (RSI) can indicate potential highs or lows of a trading range when the price trend is not significant. (RSI of 30 is low & 70 high)

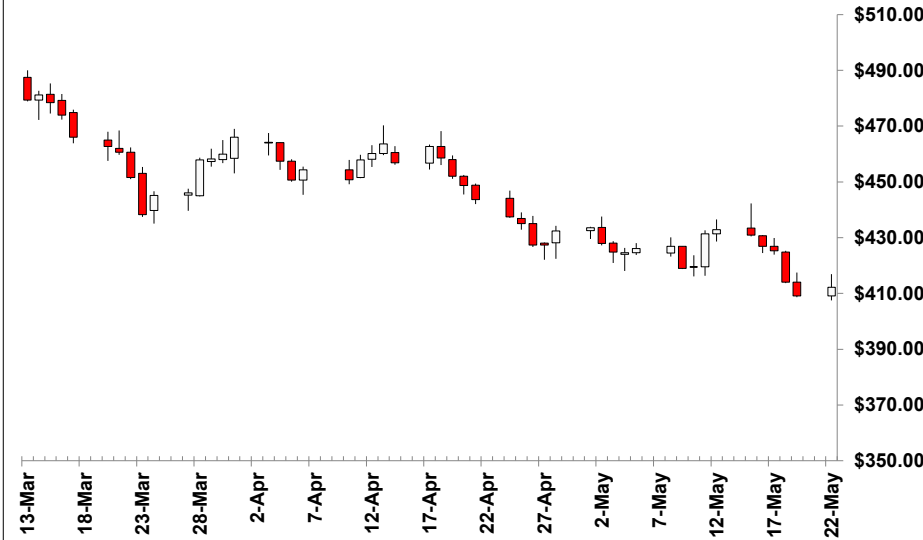
/ 5 Percentile of positive closes on particular weekdays. (prior 50 days)

SOYBEAN MEAL July 2023 - Active Contract - (\$/short ton)

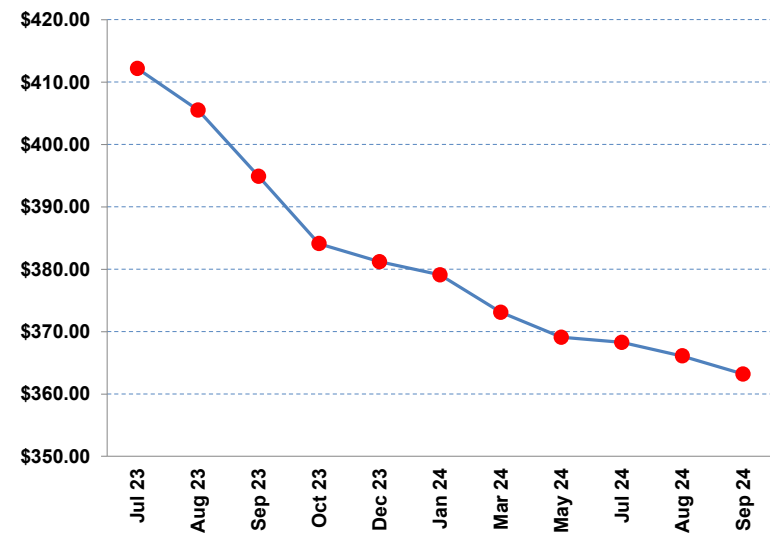
Monday, May 22, 2023

	Close /1	Change	10 MA /2	20 MA /2	40 MA /2	/3	RSI /4	Contract	Close	Change	Volume	Open Interest
Mon, May 22,	\$412.20	\$3.10	\$422.13 ↔	\$425.38 ↓	\$440.35 ↔	↓	35	Jul 23	\$412.20	\$3.10	52,635	181,257
Fri, May 19,	\$409.10	-\$5.00	\$423.60 ↓	\$426.64 ↓	\$441.18 ↓	↓	37	Aug 23	\$405.50	\$3.40	14,489	50,584
Thu, May 18,	\$414.10	-\$11.20	\$425.30 ↔	\$428.36 ↓	\$441.91 ↔	↓	40	Sep 23	\$394.90	\$3.40	10,042	49,737
Wed, May 17,	\$425.30	-\$1.60	\$426.35 ↔	\$430.09 ↓	\$442.84 ↔	↓	42	Oct 23	\$384.10	\$3.60	5,142	26,545
Tue, May 16,	\$426.90	-\$4.00	\$426.31 ↔	\$431.43 ↓	\$443.73 ↓	↓	41	Dec 23	\$381.20	\$3.80	23,615	110,022
Mon, May 15,	\$430.90	-\$2.00	\$426.41 ↔	\$433.01 ↓	\$444.62 ↓	↓	38	Jan 24	\$379.10	\$3.90	3,774	30,290
Fri, May 12,	\$432.90	\$1.50	\$426.68 ↔	\$434.60 ↓	\$445.50 ↓	↓	36	Mar 24	\$373.10	\$3.60	2,201	15,366
Thu, May 11,	\$431.40	\$11.90	\$426.63 ↔	\$435.80 ↔	\$446.53 ↓	↓	34	May 24	\$369.10	\$3.30	481	6,825
Wed, May 10,	\$419.50	\$0.50	\$426.23 ↔	\$437.41 ↓	\$447.70 ↓	↓	32	Jul 24	\$368.30	\$3.50	392	3,760
% Pos. Closes /5	Mon	Tues	Wed	Thurs	Fri			Aug 24	\$366.10	\$3.70	177	724
Prior 50 Days	55%	30%	20%	50%	56%			Sep 24	\$363.20	\$3.70	94	669

Rolling 50 Day Chart



Contract Closes



/ 1 Prior prices may reflect different contracts when there is a transition to the status of "Active Contract".

/ 2 Indicators of the simple moving averages (10, 20, & 40 day) are horizontal unless the trend is statistically significant. (critical t value is 95 percentile)

/ 3 Proprietary indicator implying if the price trend is upward, downward or insignificant.

/ 4 Relative Streight Index (RSI) can indicate potential highs or lows of a trading range when the price trend is not significant. (RSI of 30 is low & 70 high)

/ 5 Percentile of positive closes on particular weekdays. (prior 50 days)

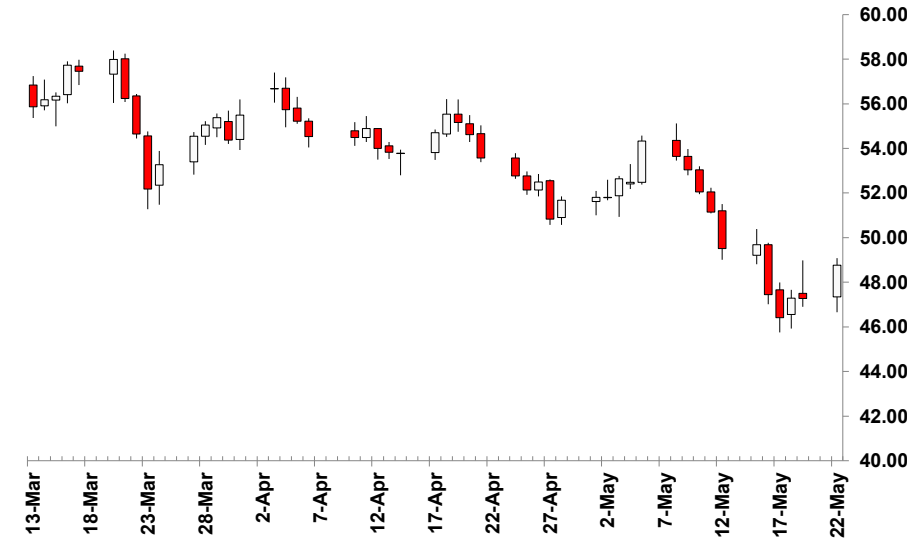
v

SOYBEAN OIL July 2023 - Active Contract - (cents/lb)

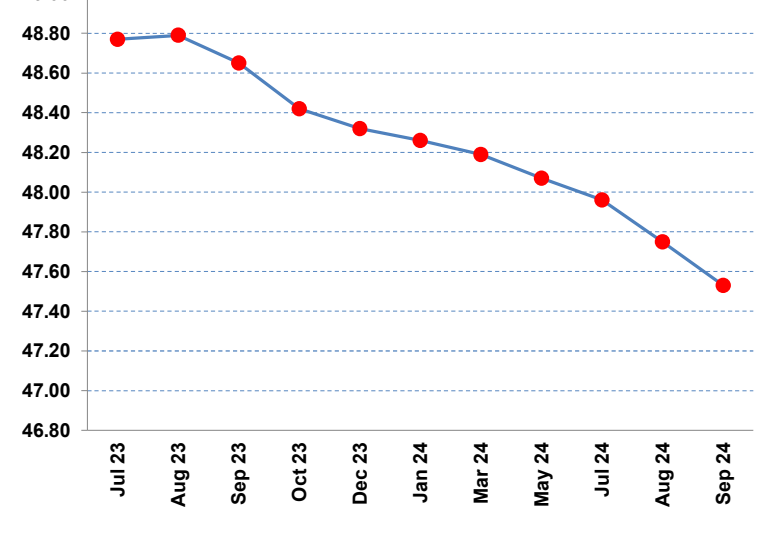
Monday, May 22, 2023

	Close /1	Change	10 MA /2	/2	20 MA /2	/2	40 MA /2	/2	/3	RSI /4	Contract	Close	Change	Volume	Open Interest
Mon, May 22,	48.77	1.50	49.26	↔	50.82	↔	52.77	↓	↓	31	Jul 23	48.77	1.50	60,705	185,058
Fri, May 19,	47.27	-0.02	49.75	↓	51.02	↓	52.88	↓	↓	30	Aug 23	48.79	1.44	18,441	70,156
Thu, May 18,	47.29	0.88	50.46	↓	51.34	↓	53.00	↓	↓	30	Sep 23	48.65	1.38	9,945	46,747
Wed, May 17,	46.41	-1.04	50.98	↓	51.70	↓	53.19	↓	↓	32	Oct 23	48.42	1.31	5,513	27,635
Tue, May 16,	47.45	-2.24	51.60	↓	52.14	↓	53.43	↓	↓	35	Dec 23	48.32	1.27	21,286	133,763
Mon, May 15,	49.69	0.17	52.03	↔	52.55	↓	53.70	↓	↔	39	Jan 24	48.26	1.26	3,854	21,007
Fri, May 12,	49.52	-1.63	52.25	↔	52.80	↓	53.89	↓	↔	42	Mar 24	48.19	1.24	2,335	19,279
Thu, May 11,	51.15	-0.90	52.46	↔	53.01	↔	54.10	↓	↔	45	May 24	48.07	1.21	1,692	11,143
Wed, May 10,	52.05	-0.99	52.43	↔	53.14	↔	54.23	↓	↓	46	Jul 24	47.96	1.18	1,719	13,820
% Pos. Closes /5	Mon	Tues	Wed	Thurs	Fri	Aug 24	47.75	1.17	69	1,698					
Prior 50 Days	64%	40%	40%	30%	44%	Sep 24	47.53	1.18	38	1,289					

Rolling 50 Day Chart



Contract Closes



/ 1 Prior prices may reflect different contracts when there is a transition to the status of "Active Contract".

/ 2 Indicators of the simple moving averages (10, 20, & 40 day) are horizontal unless the trend is statistically significant. (critical t value is 95 percentile)

/ 3 Proprietary indicator implying if the price trend is upward, downward or insignificant.

/ 4 Relative Strenght Index (RSI) can indicate potential highs or lows of a trading range when the price trend is not significant. (RSI of 30 is low & 70 high)

/ 5 Percentile of positive closes on particular weekdays. (prior 50 days)

v

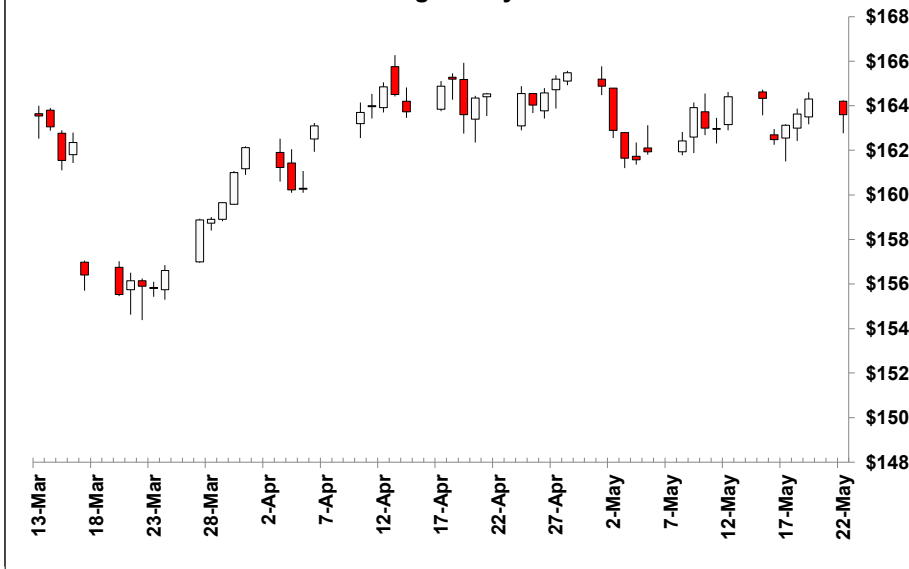


LIVE CATTLE August 2023 - Active Contract - (\$/cwt)

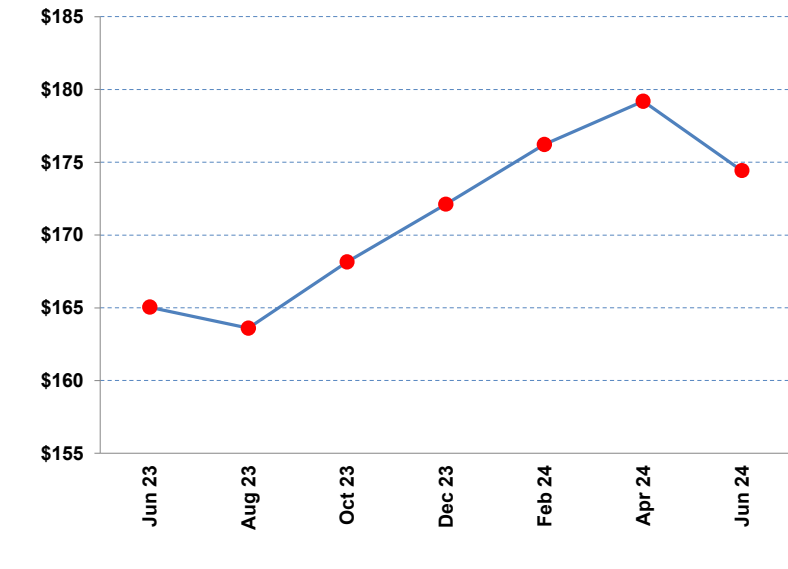
Monday, May 22, 2023

	Close /1	Change	10 MA /2	/2	20 MA /2	/2	40 MA /2	/2	/3	RSI /4	Contract	Close	Change	Volume	Open Interest
Mon, May 22,	\$163.600	-\$0.700	\$163.573	↔	\$163.518	↔	\$163.09	↑	↔	51	Jun 23	\$165.05	-\$0.675	7,903	51,709
Fri, May 19,	\$164.300	\$0.675	\$163.455	↑	\$163.565	↔	\$162.91	↑	↑	52	Aug 23	\$163.60	-\$0.700	20,429	149,882
Thu, May 18,	\$163.625	\$0.500	\$163.218	↔	\$163.576	↔	\$162.70	↑	↔	52	Oct 23	\$168.15	-\$0.300	9,073	60,064
Wed, May 17,	\$163.125	\$0.650	\$163.013	↔	\$163.613	↔	\$162.51	↑	↔	51	Dec 23	\$172.13	-\$0.150	5,386	35,413
Tue, May 16,	\$162.475	-\$1.850	\$162.865	↔	\$163.636	↔	\$162.33	↑	↔	51	Feb 24	\$176.23	-\$0.100	3,578	18,542
Mon, May 15,	\$164.325	-\$0.075	\$162.908	↔	\$163.773	↔	\$162.16	↑	↔	53	Apr 24	\$179.20	\$0.075	738	10,969
Fri, May 12,	\$164.400	\$1.450	\$162.963	↔	\$163.800	↔	\$161.96	↑	↔	51	Jun 24	\$174.43	\$0.125	236	3,575
Thu, May 11,	\$162.950	-\$0.050	\$163.070	↔	\$163.766	↔	\$161.91	↔	↔	49					
Wed, May 10,	\$163.000	-\$0.925	\$163.295	↔	\$163.844	↔	\$161.88	↔	↔	47					
% Pos. Closes /5	Mon	Tues	Wed	Thurs	Fri										
Prior 50 Days	45%	30%	50%	60%	67%										

Rolling 50 Day Chart



Contract Closes



/ 1 Prior prices may reflect different contracts when there is a transition to the status of "Active Contract".

/ 2 Indicators of the simple moving averages (10, 20, & 40 day) are horizontal unless the trend is statistically significant. (critical t value is 95 percentile)

/ 3 Proprietary indicator implying if the price trend is upward, downward or insignificant.

/ 4 Relative Strength Index (RSI) can indicate potential highs or lows of a trading range when the price trend is not significant. (RSI of 30 is low & 70 high)

/ 5 Percentile of positive closes on particular weekdays. (prior 50 days)

v

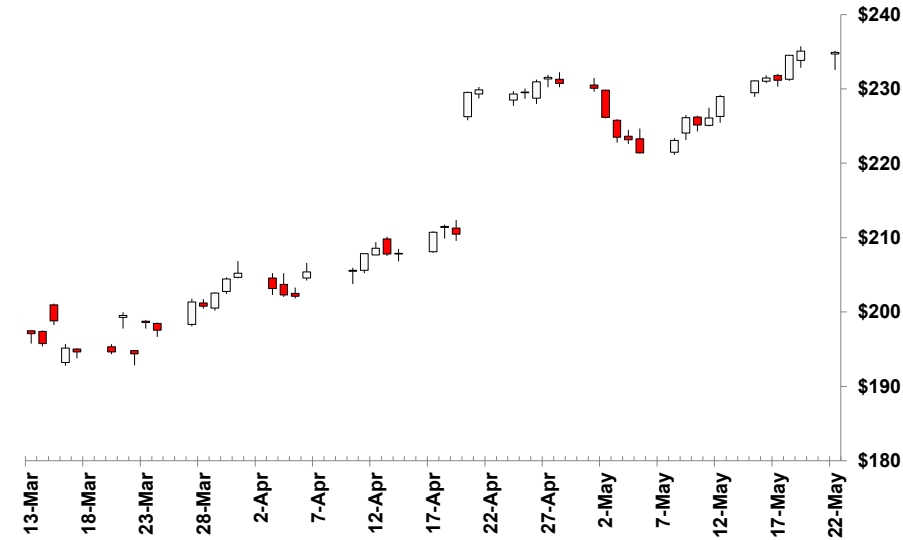


FEEDER CATTLE August 2023 - Active Contract - (\$/cwt)

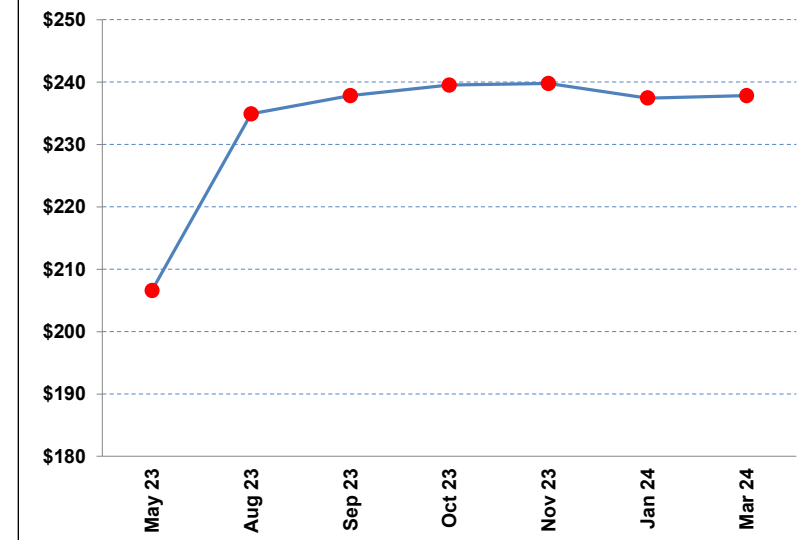
Monday, May 22, 2023

	Close /1	Change	10 MA /2	/2	20 MA /2	/2	40 MA /2	/2	/3	RSI /4	Contract	Close	Change	Volume	Open Interest
Mon, May 22,	\$234.900	-\$0.200	\$230.450	↑	\$228.736	⇔	\$219.03	↑	↑	72	May 23	\$206.58	\$0.300	966	3,531
Fri, May 19,	\$235.100	\$0.600	\$229.270	↑	\$228.458	⇔	\$218.10	↑	↑	72	Aug 23	\$234.90	-\$0.200	5,810	34,246
Thu, May 18,	\$234.500	\$3.350	\$227.903	↑	\$228.196	⇔	\$217.18	↑	↑	70	Sep 23	\$237.85	-\$0.100	2,727	9,974
Wed, May 17,	\$231.150	-\$0.325	\$226.768	⇔	\$227.948	⇔	\$216.18	↑	⇔	68	Oct 23	\$239.53	\$0.075	1,912	7,461
Tue, May 16,	\$231.475	\$0.425	\$226.005	↑	\$226.914	↑	\$215.39	↑	⇔	67	Nov 23	\$239.78	\$0.400	1,158	5,346
Mon, May 15,	\$231.050	\$2.075	\$225.475	⇔	\$225.915	↑	\$214.47	↑	⇔	66	Jan 24	\$237.45	\$0.250	615	3,473
Fri, May 12,	\$228.975	\$2.900	\$225.380	⇔	\$224.900	↑	\$213.56	↑	⇔	64	Mar 24	\$237.83	\$0.600	102	655
Thu, May 11,	\$226.075	\$0.925	\$225.555	⇔	\$223.846	↑	\$212.71	↑	⇔	62					
Wed, May 10,	\$225.150	-\$0.975	\$226.105	⇔	\$222.933	⇔	\$212.03	↑	⇔	61					
% Pos. Closes /5	Mon	Tues	Wed	Thurs	Fri										
Prior 50 Days	64%	50%	30%	70%	56%										

Rolling 50 Day Chart



Contract Closes



/ 1 Prior prices may reflect different contracts when there is a transition to the status of "Active Contract".

/ 2 Indicators of the simple moving averages (10, 20, & 40 day) are horizontal unless the trend is statistically significant. (critical t value is 95 percentile)

/ 3 Proprietary indicator implying if the price trend is upward, downward or insignificant.

/ 4 Relative Strenght Index (RSI) can indicate potential highs or lows of a trading range when the price trend is not significant. (RSI of 30 is low & 70 high)

/ 5 Percentile of positive closes on particular weekdays. (prior 50 days)

v

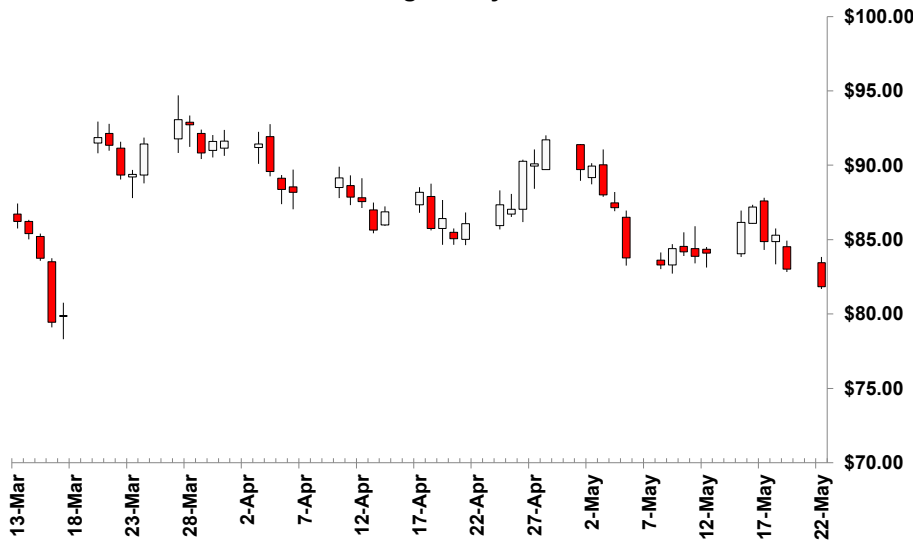


LEAN HOGS June 2023 - Active Contract - (\$/cwt)

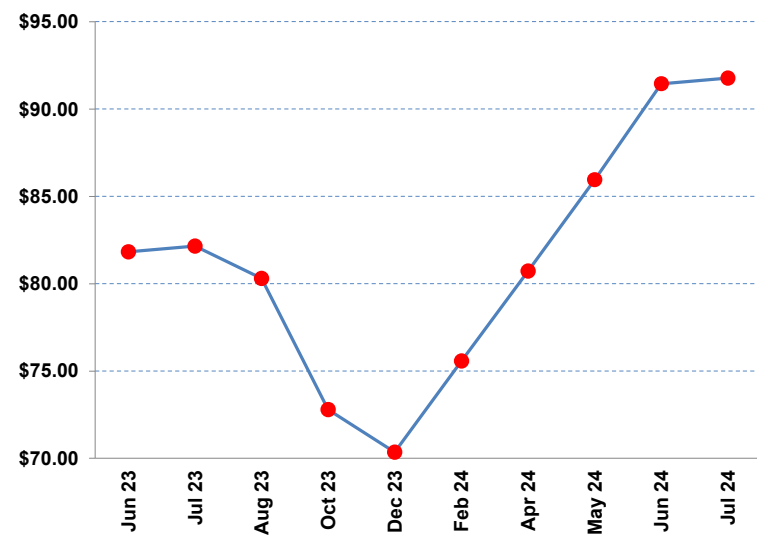
Monday, May 22, 2023

	Close /1	Change	10 MA /2	20 MA /2	40 MA /2	/3	RSI /4	Contract	Close	Change	Volume	Open Interest	
Mon, May 22,	\$81.825	-\$1.200	\$84.493	↔	\$86.296	↔	\$87.48 ↓ ↓	44	Jun 23	\$81.83	-\$1.200	14,486	39,618
Fri, May 19,	\$83.025	-\$2.275	\$84.640	↔	\$86.572	↔	\$87.72 ↓ ↓	46	Jul 23	\$82.15	-\$0.975	19,042	69,739
Thu, May 18,	\$85.300	\$0.425	\$84.715	↔	\$86.725	↔	\$87.88 ↔ ↓	46	Aug 23	\$80.30	-\$1.200	12,106	48,495
Wed, May 17,	\$84.875	-\$2.325	\$84.900	↔	\$86.714	↔	\$87.98 ↔ ↓	45	Oct 23	\$72.80	-\$1.150	4,987	33,936
Tue, May 16,	\$87.200	\$1.050	\$85.213	↔	\$86.791	↔	\$88.14 ↔ ↓	45	Dec 23	\$70.35	-\$1.300	3,891	24,282
Mon, May 15,	\$86.150	\$2.050	\$85.488	↔	\$86.719	↔	\$88.26 ↓ ↓	43	Feb 24	\$75.58	-\$1.250	1,447	11,092
Fri, May 12,	\$84.100	\$0.225	\$85.843	↔	\$86.820	↔	\$88.10 ↔ ↓	40	Apr 24	\$80.73	-\$1.200	464	3,774
Thu, May 11,	\$83.875	-\$0.300	\$86.603	↓	\$86.959	↔	\$87.99 ↔ ↓	40	May 24	\$85.95	-\$0.875	0	5
Wed, May 10,	\$84.175	-\$0.225	\$87.225	↔	\$87.047	↔	\$87.98 ↔ ↔	41	Jun 24	\$91.45	-\$1.075	105	498
Jul 24									Jul 24	\$91.78	-\$0.850	24	75
% Pos. Closes /5	Mon	Tues	Wed	Thurs	Fri								
Prior 50 Days	64%	40%	20%	40%	67%								

Rolling 50 Day Chart



Contract Closes



/ 1 Prior prices may reflect different contracts when there is a transition to the status of "Active Contract".

/ 2 Indicators of the simple moving averages (10, 20, & 40 day) are horizontal unless the trend is statistically significant. (critical t value is 95 percentile)

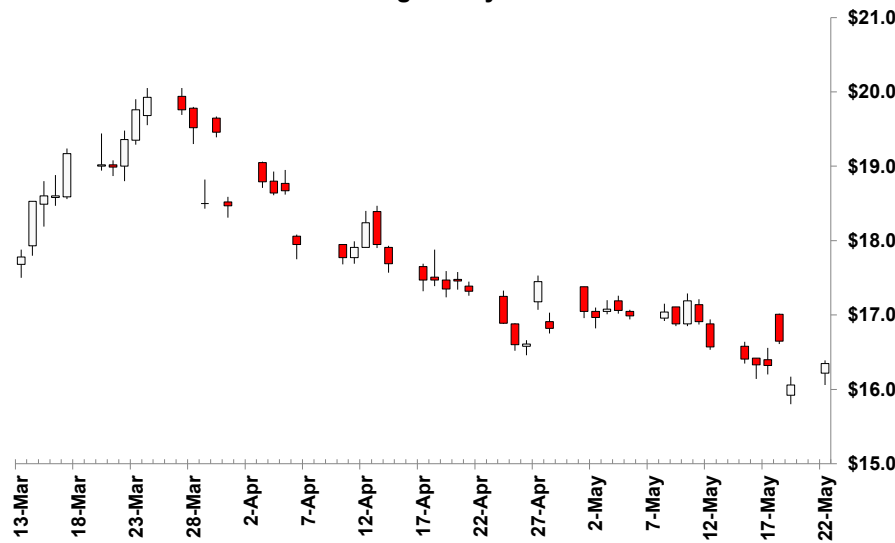
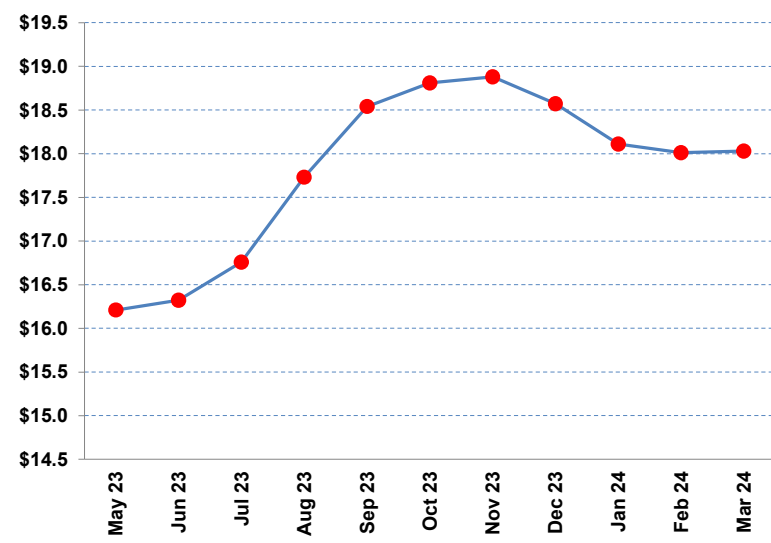
/ 3 Proprietary indicator implying if the price trend is upward, downward or insignificant.

/ 4 Relative Strength Index (RSI) can indicate potential highs or lows of a trading range when the price trend is not significant. (RSI of 30 is low & 70 high)

/ 5 Percentile of positive closes on particular weekdays. (prior 50 days)

v

	Close /1	Change	10 MA /2	/2	20 MA /2	/2	40 MA /2	/2	/3	RSI /4	Contract	Close	Change	Volume	Open Interest
Mon, May 22,	\$16.35	\$0.29	\$16.57	↔	\$16.77	↔	\$17.47	↓	↓	38	May 23	\$16.21	\$0.02	122	4,586
Fri, May 19,	\$16.06	-\$0.59	\$16.64	↓	\$16.79	↓	\$17.56	↓	↓	37	Jun 23	\$16.32	\$0.29	551	6,627
Thu, May 18,	\$16.65	\$0.33	\$16.73	↔	\$16.86	↓	\$17.65	↓	↓	37	Jul 23	\$16.76	\$0.16	402	4,793
Wed, May 17,	\$16.32	-\$0.01	\$16.77	↓	\$16.90	↓	\$17.72	↓	↓	38	Aug 23	\$17.73	\$0.09	155	2,456
Tue, May 16,	\$16.33	-\$0.08	\$16.85	↓	\$16.95	↓	\$17.78	↓	↓	40	Sep 23	\$18.54	\$0.18	40	2,052
Mon, May 15,	\$16.41	-\$0.16	\$16.91	↓	\$17.01	↓	\$17.85	↓	↔	41	Oct 23	\$18.81	\$0.01	6	1,607
Fri, May 12,	\$16.57	-\$0.34	\$16.97	↓	\$17.06	↓	\$17.92	↓	↔	42	Nov 23	\$18.88	\$0.01	7	1,376
Thu, May 11,	\$16.91	-\$0.28	\$17.00	↔	\$17.12	↓	\$17.97	↔	↔	43	Dec 23	\$18.57	\$0.07	4	1,156
Wed, May 10,	\$17.19	\$0.31	\$17.05	↔	\$17.17	↓	\$18.01	↔	↔	43	Jan 24	\$18.11	\$0.01	1	383
% Pos. Closes /5	Mon	Tues	Wed	Thurs	Fri										
Prior 50 Days	36%	20%	60%	30%	33%										
						Feb 24	\$18.01	\$0.00	28	338	Mar 24	\$18.03	\$0.00	17	387

Rolling 50 Day Chart

Contract Closes


/ 1 Prior prices may reflect different contracts when there is a transition to the status of "Active Contract".

/ 2 Indicators of the simple moving averages (10, 20, & 40 day) are horizontal unless the trend is statistically significant. (critical t value is 95 percentile)

/ 3 Proprietary indicator implying if the price trend is upward, downward or insignificant.

/ 4 Relative Streight Index (RSI) can indicate potential highs or lows of a trading range when the price trend is not significant. (RSI of 30 is low & 70 high)

/ 5 Percentile of positive closes on particular weekdays. (prior 50 days)

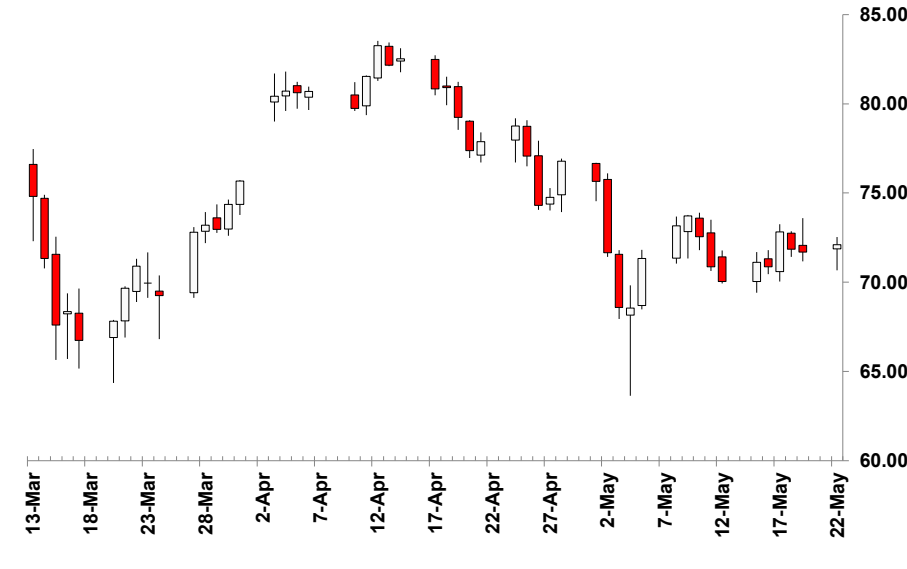
v

CRUDE OIL July 2023 - Active Contract - (\$/barrel)

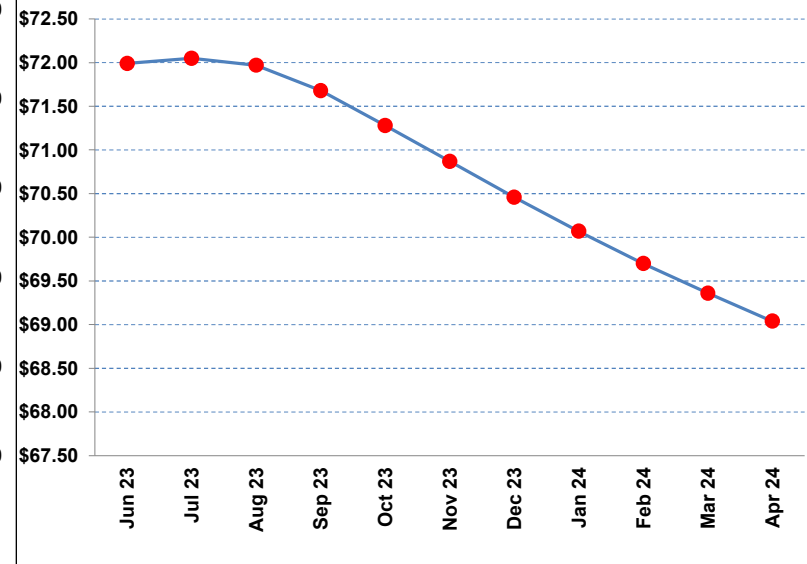
Monday, May 22, 2023

	Close /1	Change	10 MA /2	/2	20 MA /2	/2	40 MA /2	/2	/3	RSI /4	Contract	Close	Change	Volume	Open Interest
Mon, May 22,	\$72.11	\$0.42	\$71.76	↔	\$72.48	↓	\$75.63	↔	↔	45	Jun 23	\$71.99	\$0.44	69,949	20,121
Fri, May 19,	\$71.69	-\$0.17	\$71.87	↔	\$72.81	↓	\$75.56	↔	↔	44	Jul 23	\$72.05	\$0.42	312,432	378,970
Thu, May 18,	\$71.86	-\$0.97	\$71.83	↔	\$73.12	↔	\$75.51	↔	↓	43	Aug 23	\$71.97	\$0.43	74,910	205,842
Wed, May 17,	\$72.83	\$1.97	\$71.50	↑	\$73.39	↔	\$75.49	↔	↓	42	Sep 23	\$71.68	\$0.41	51,667	170,254
Tue, May 16,	\$70.86	-\$0.25	\$71.08	↔	\$73.71	↓	\$75.41	↔	↓	41	Oct 23	\$71.28	\$0.41	26,108	176,147
Mon, May 15,	\$71.11	\$1.07	\$71.16	↔	\$74.22	↓	\$75.34	↔	↓	42	Nov 23	\$70.87	\$0.33	11,929	62,241
Fri, May 12,	\$70.04	-\$0.83	\$71.62	↓	\$74.70	↓	\$75.23	↔	↓	43	Dec 23	\$70.46	\$0.32	48,178	223,638
Thu, May 11,	\$70.87	-\$1.69	\$72.29	↔	\$75.33	↓	\$75.18	↔	↓	43	Jan 24	\$70.07	\$0.25	4,431	36,553
Wed, May 10,	\$72.56	-\$1.15	\$72.68	↔	\$75.89	↓	\$75.10	↔	↓	41	Feb 24	\$69.70	\$0.24	3,450	25,541
% Pos. Closes /5	Mon	Tues	Wed	Thurs	Fri										
Prior 50 Days	64%	50%	30%	60%	56%										
						Mar 24	\$69.36	\$0.28	6,114	38,020	Apr 24	\$69.04	\$0.25	1,127	23,662

Rolling 50 Day Chart



Contract Closes



/ 1 Prior prices may reflect different contracts when there is a transition to the status of "Active Contract".

/ 2 Indicators of the simple moving averages (10, 20, & 40 day) are horizontal unless the trend is statistically significant. (critical t value is 95 percentile)

/ 3 Proprietary indicator implying if the price trend is upward, downward or insignificant.

/ 4 Relative Streight Index (RSI) can indicate potential highs or lows of a trading range when the price trend is not significant. (RSI of 30 is low & 70 high)

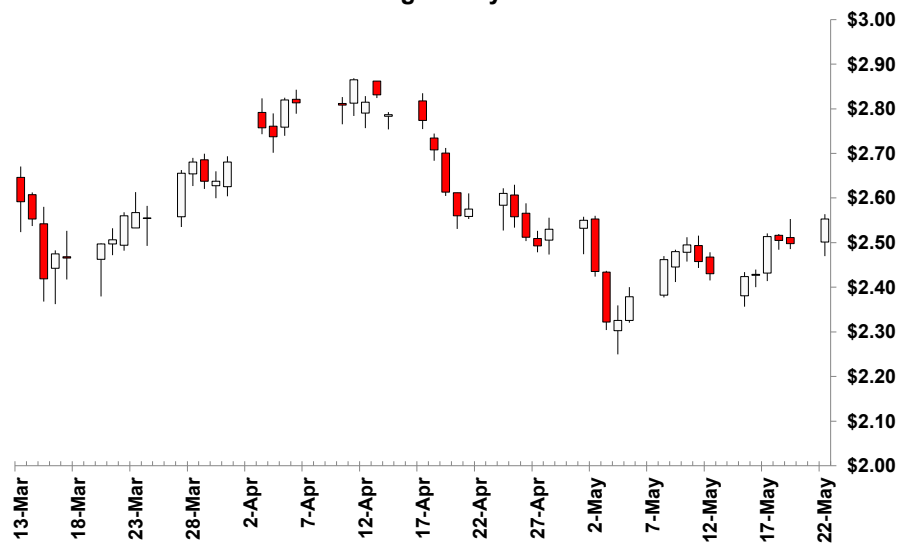
/ 5 Percentile of positive closes on particular weekdays. (prior 50 days)

RBOB GASOLINE July 2023 - Active Contract - (\$/gal)

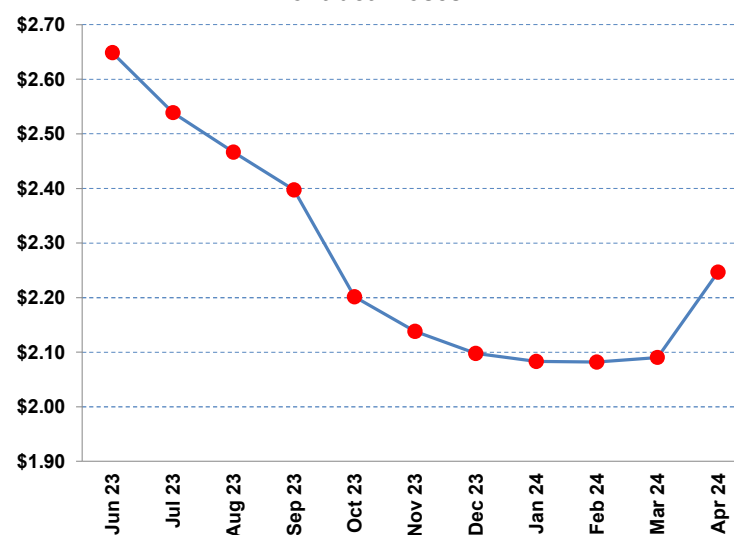
Monday, May 22, 2023

	Close /1	Change	10 MA /2	/2	20 MA /2	/2	40 MA /2	/2	/3	RSI /4	Contract	Close	Change	Volume	Open Interest
Mon, May 22,	\$2.5531	\$0.0554	\$2.4785	↔	\$2.4677	↔	\$2.5930	↔	↔	48	Jun 23	\$2.6489	\$0.0934	47,389	50,613
Fri, May 19,	\$2.4977	-\$0.0072	\$2.4694	↔	\$2.4705	↔	\$2.5930	↔	↔	46	Jul 23	\$2.5389	\$0.0554	74,160	93,481
Thu, May 18,	\$2.5049	-\$0.0090	\$2.4575	↑	\$2.4744	↔	\$2.5948	↔	↔	44	Aug 23	\$2.4665	\$0.0420	26,586	32,678
Wed, May 17,	\$2.5139	\$0.0845	\$2.4396	↑	\$2.4772	↔	\$2.5961	↔	↓	43	Sep 23	\$2.3974	\$0.0290	15,908	36,006
Tue, May 16,	\$2.4294	\$0.0059	\$2.4204	↔	\$2.4821	↓	\$2.5960	↔	↓	42	Oct 23	\$2.2015	\$0.0176	10,407	28,562
Mon, May 15,	\$2.4235	-\$0.0067	\$2.4211	↔	\$2.4961	↓	\$2.5976	↔	↓	43	Nov 23	\$2.1380	\$0.0080	4,346	16,677
Fri, May 12,	\$2.4302	-\$0.0275	\$2.4337	↔	\$2.5136	↓	\$2.5987	↔	↓	43	Dec 23	\$2.0977	\$0.0085	6,833	24,480
Thu, May 11,	\$2.4577	-\$0.0372	\$2.4437	↔	\$2.5314	↓	\$2.5998	↔	↓	42	Jan 24	\$2.0832	\$0.0099	1,223	13,838
Wed, May 10,	\$2.4949	\$0.0150	\$2.4472	↔	\$2.5501	↓	\$2.5988	↔	↓	40	Feb 24	\$2.0820	\$0.0106	664	2,587
% Pos. Closes /5	Mon	Tues	Wed	Thurs	Fri										
Prior 50 Days	64%	50%	50%	40%	56%	Mar 24	\$2.0905	\$0.0109	430	2,603	Apr 24	\$2.2466	\$0.0106	73	1,212

Rolling 50 Day Chart



Contract Closes



/ 1 Prior prices may reflect different contracts when there is a transition to the status of "Active Contract".

/ 2 Indicators of the simple moving averages (10, 20, & 40 day) are horizontal unless the trend is statistically significant. (critical t value is 95 percentile)

/ 3 Proprietary indicator implying if the price trend is upward, downward or insignificant.

/ 4 Relative Streight Index (RSI) can indicate potential highs or lows of a trading range when the price trend is not significant. (RSI of 30 is low & 70 high)

/ 5 Percentile of positive closes on particular weekdays. (prior 50 days)

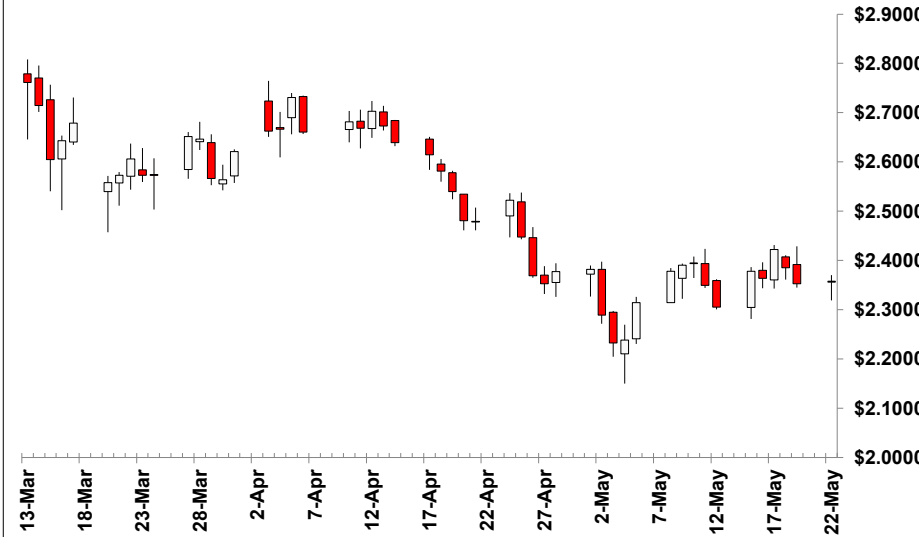
v

NEW YORK HARBOR ULSD July 2023 - Active Contract - (\$/gal)

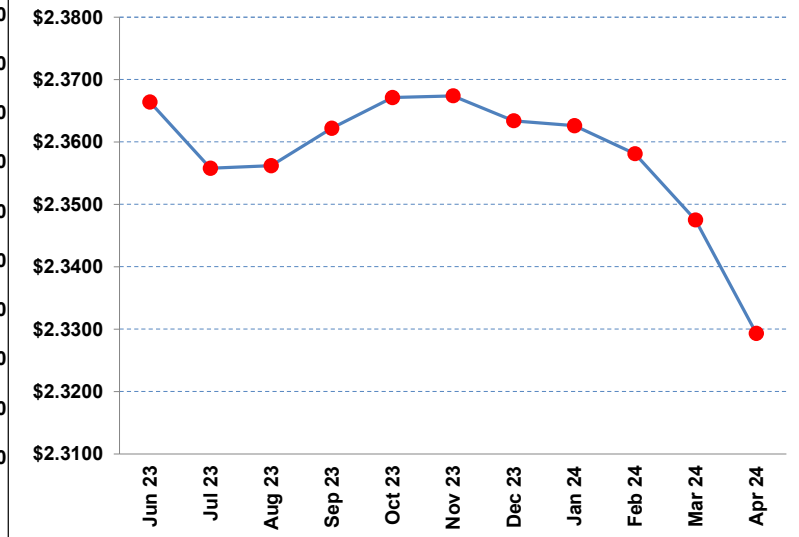
Monday, May 22, 2023

	Close /1	Change	10 MA /2	20 MA /2	40 MA /2	/3	RSI /4	Contract	Close	Change	Volume	Open Interest			
Mon, May 22,	\$2.3584	\$0.0060	\$2.3699	↔	\$2.3540	↔	\$2.4858	↔	45	Jun 23	\$2.3664	\$0.0078	36,211	39,054	
Fri, May 19,	\$2.3524	-\$0.0330	\$2.3719	↔	\$2.3622	↓	\$2.4912	↔	45	Jul 23	\$2.3558	\$0.0060	48,745	75,448	
Thu, May 18,	\$2.3854	-\$0.0372	\$2.3681	↔	\$2.3686	↔	\$2.4967	↔	44	Aug 23	\$2.3562	\$0.0068	17,826	25,360	
Wed, May 17,	\$2.4226	\$0.0587	\$2.3534	↑	\$2.3734	↔	\$2.5022	↔	43	Sep 23	\$2.3622	\$0.0060	11,006	31,700	
Tue, May 16,	\$2.3639	-\$0.0141	\$2.3344	↔	\$2.3792	↓	\$2.5060	↔	42	Oct 23	\$2.3671	\$0.0035	4,127	24,013	
Mon, May 15,	\$2.3780	\$0.0725	\$2.3269	↔	\$2.3901	↓	\$2.5108	↔	42	Nov 23	\$2.3674	\$0.0057	3,919	17,304	
Fri, May 12,	\$2.3055	-\$0.0440	\$2.3274	↔	\$2.4019	↓	\$2.5184	↓	41	Dec 23	\$2.3634	\$0.0063	9,783	36,819	
Thu, May 11,	\$2.3495	-\$0.0439	\$2.3345	↔	\$2.4186	↓	\$2.5268	↓	41	Jan 24	\$2.3626	\$0.0049	1,591	10,704	
Wed, May 10,	\$2.3934	\$0.0032	\$2.3348	↔	\$2.4348	↓	\$2.5332	↔	38	Feb 24	\$2.3581	\$0.0053	1,312	4,579	
% Pos. Closes /5	Mon	Tues	Wed	Thurs	Fri										
Prior 50 Days	73%	30%	40%	30%	56%	Mar 24	\$2.3475	\$0.0083	1,135	7,213	Apr 24	\$2.3293	\$0.0075	547	3,491

Rolling 50 Day Chart



Contract Closes



/ 1 Prior prices may reflect different contracts when there is a transition to the status of "Active Contract".

/ 2 Indicators of the simple moving averages (10, 20, & 40 day) are horizontal unless the trend is statistically significant. (critical t value is 95 percentile)

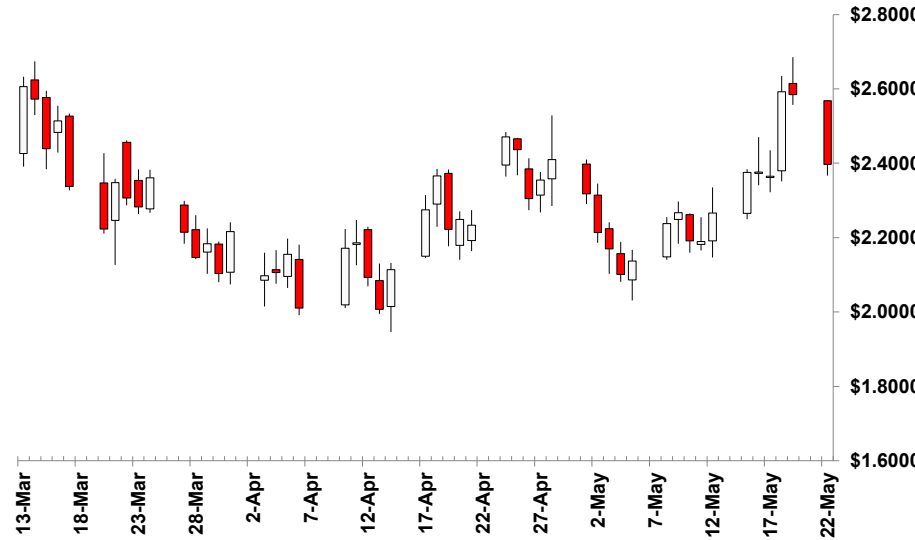
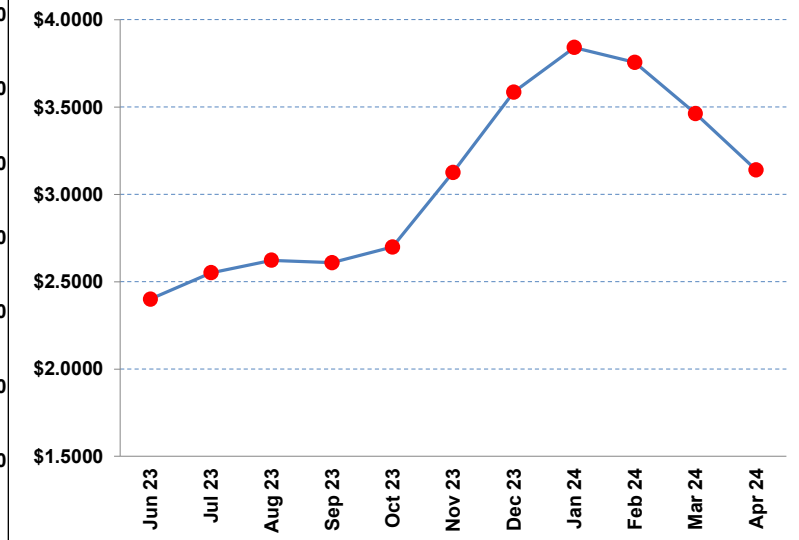
/ 3 Proprietary indicator implying if the price trend is upward, downward or insignificant.

/ 4 Relative Strength Index (RSI) can indicate potential highs or lows of a trading range when the price trend is not significant. (RSI of 30 is low & 70 high)

/ 5 Percentile of positive closes on particular weekdays. (prior 50 days)

v

	Close /1	Change	10 MA /2	/2	20 MA /2	/2	40 MA /2	/2	/3	RSI /4	Contract	Close	Change	Volume	Open Interest
Mon, May 22,	\$2.397	-\$0.188	\$2.360	↔	\$2.314	↔	\$2.248	↔	↑	58	Jun 23	\$2.400	-\$0.188	162,128	50,219
Fri, May 19,	\$2.585	-\$0.007	\$2.345	↑	\$2.318	↔	\$2.247	↔	↑	59	Jul 23	\$2.551	-\$0.161	151,503	361,532
Thu, May 18,	\$2.592	\$0.227	\$2.300	↑	\$2.301	↑	\$2.239	↑	↑	56	Aug 23	\$2.623	-\$0.155	50,505	95,403
Wed, May 17,	\$2.365	-\$0.011	\$2.251	↑	\$2.283	↔	\$2.232	↔	↔	53	Sep 23	\$2.609	-\$0.140	41,809	168,910
Tue, May 16,	\$2.376	\$0.001	\$2.231	↔	\$2.276	↔	\$2.232	↔	↔	51	Oct 23	\$2.698	-\$0.133	40,202	114,864
Mon, May 15,	\$2.375	\$0.109	\$2.215	↔	\$2.276	↔	\$2.228	↔	↔	50	Nov 23	\$3.126	-\$0.108	14,814	62,963
Fri, May 12,	\$2.266	\$0.076	\$2.209	↔	\$2.271	↔	\$2.227	↔	↔	49	Dec 23	\$3.585	-\$0.093	7,462	42,561
Thu, May 11,	\$2.190	-\$0.001	\$2.224	↓	\$2.263	↔	\$2.233	↓	↔	47	Jan 24	\$3.841	-\$0.089	16,581	76,904
Wed, May 10,	\$2.191	-\$0.076	\$2.240	↔	\$2.254	↔	\$2.239	↓	↔	46	Feb 24	\$3.756	-\$0.093	6,943	30,437
% Pos. Closes /5	Mon	Tues	Wed	Thurs	Fri										
Prior 50 Days	64%	50%	30%	50%	78%										

Rolling 50 Day Chart

Contract Closes


/ 1 Prior prices may reflect different contracts when there is a transition to the status of "Active Contract".

/ 2 Indicators of the simple moving averages (10, 20, & 40 day) are horizontal unless the trend is statistically significant. (critical t value is 95 percentile)

/ 3 Proprietary indicator implying if the price trend is upward, downward or insignificant.

/ 4 Relative Streight Index (RSI) can indicate potential highs or lows of a trading range when the price trend is not significant. (RSI of 30 is low & 70 high)

/ 5 Percentile of positive closes on particular weekdays. (prior 50 days)

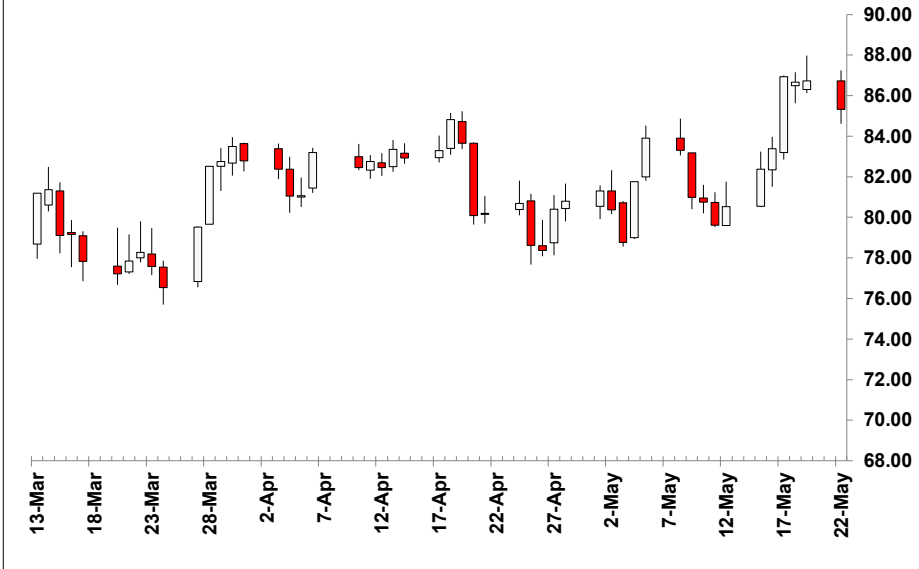
v

COTTON #2 July 2023 - Active Contract - (cents/lb)

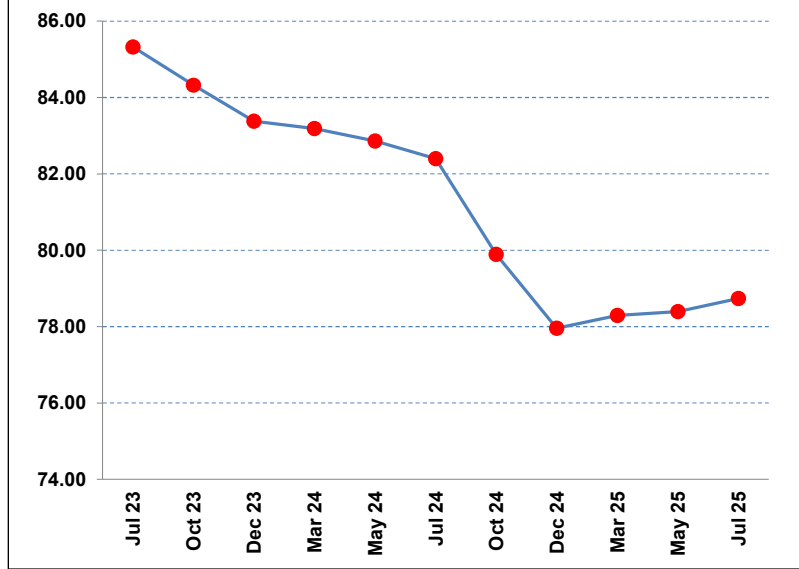
Monday, May 22, 2023

	Close /1	Change	10 MA /2	/2	20 MA /2	/2	40 MA /2	/2	/3	RSI /4	Contract	Close	Change	Volume	Open Interest
Mon, May 22,	85.32	-1.40	83.33	↔	82.04	↑	82.16	↑	↑	61	Jul 23	85.32	-1.40	20,543	82,669
Fri, May 19,	86.72	0.06	83.13	↔	81.81	↑	81.94	↑	↑	60	Oct 23	84.32	-0.51	1	18
Thu, May 18,	86.66	-0.28	82.85	↔	81.48	↑	81.71	↑	↑	57	Dec 23	83.38	-0.51	12,401	78,794
Wed, May 17,	86.94	3.56	82.36	↑	81.16	↑	81.50	↑	↑	53	Mar 24	83.19	-0.43	3,656	12,182
Tue, May 16,	83.38	1.01	81.54	↑	80.99	↔	81.27	↑	↔	50	May 24	82.86	-0.32	745	4,877
Mon, May 15,	82.37	1.84	81.24	↔	81.06	↔	81.12	↑	↔	49	Jul 24	82.40	-0.18	190	2,843
Fri, May 12,	80.53	0.91	81.13	↔	81.11	↔	81.00	↔	↔	49	Oct 24	79.89	-0.16	0	0
Thu, May 11,	79.62	-1.14	81.16	↔	81.23	↔	80.97	↔	↔	51	Dec 24	77.96	-0.04	131	7,789
Wed, May 10,	80.76	-0.23	81.24	↔	81.42	↔	80.96	↔	↔	53	Mar 25	78.29	0.00	0	3
% Pos. Closes /5	Mon	Tues	Wed	Thurs	Fri						May 25	78.39	0.00	0	0
Prior 50 Days	55%	60%	40%	60%	44%						Jul 25	78.74	0.00	0	0

Rolling 50 Day Chart



Contract Closes



/ 1 Prior prices may reflect different contracts when there is a transition to the status of "Active Contract".

/ 2 Indicators of the simple moving averages (10, 20, & 40 day) are horizontal unless the trend is statistically significant. (critical t value is 95 percentile)

/ 3 Proprietary indicator implying if the price trend is upward, downward or insignificant.

/ 4 Relative Streight Index (RSI) can indicate potential highs or lows of a trading range when the price trend is not significant. (RSI of 30 is low & 70 high)

/ 5 Percentile of positive closes on particular weekdays. (prior 50 days)

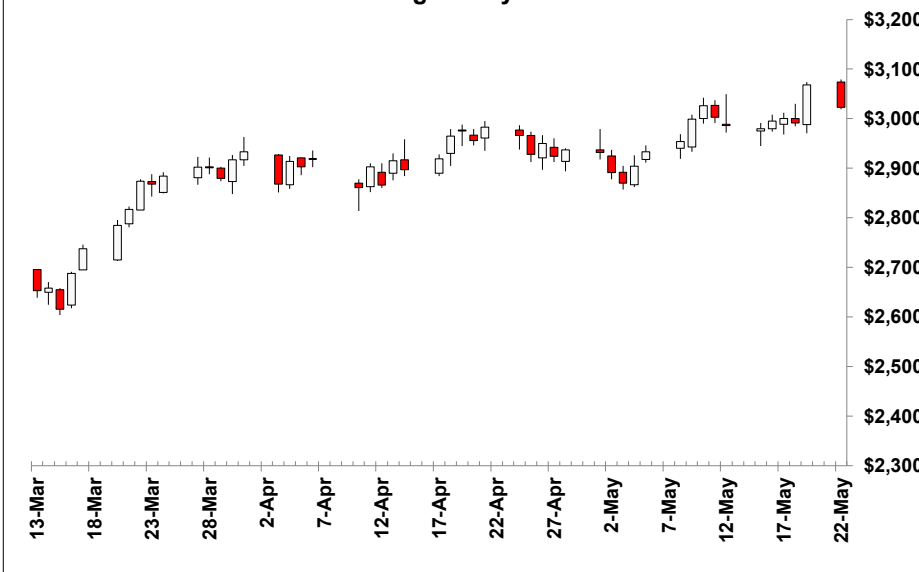
v

COCOA July 2023 - Active Contract - (\$/MT)

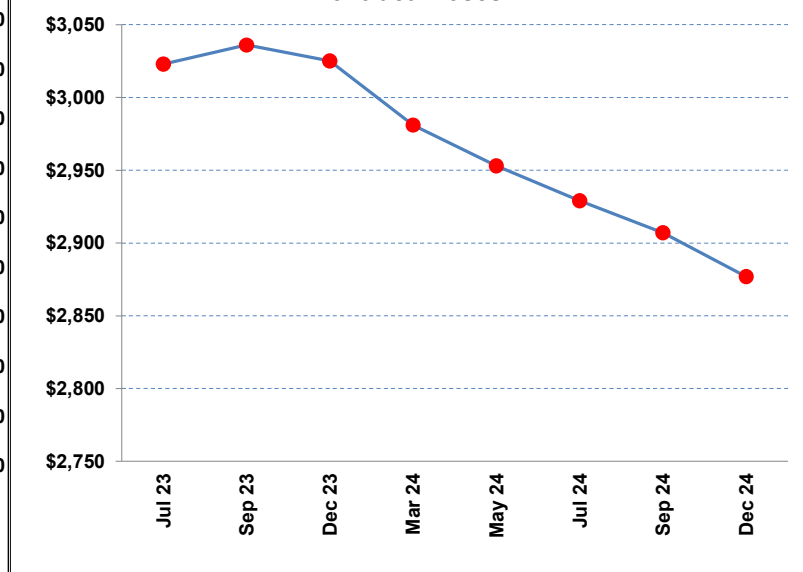
Monday, May 22, 2023

	Close /1	Change	10 MA /2	20 MA /2	40 MA /2	/3	RSI /4	Contract	Close	Change	Volume	Open Interest			
Mon, May 22,	\$3,023	-\$45	\$3,007	↔	\$2,965	↔	\$2,941	↑	↑	60	Jul 23	\$3,023	-\$45	24,531	129,086
Fri, May 19,	\$3,068	\$77	\$3,000	↑	\$2,962	↑	\$2,938	↑	↑	60	Sep 23	\$3,036	-\$38	11,984	78,240
Thu, May 18,	\$2,991	-\$9	\$2,987	↔	\$2,958	↔	\$2,933	↑	↑	58	Dec 23	\$3,025	-\$35	6,403	75,632
Wed, May 17,	\$3,000	\$5	\$2,978	↑	\$2,956	↔	\$2,930	↑	↑	59	Mar 24	\$2,981	-\$32	3,892	39,110
Tue, May 16,	\$2,995	\$15	\$2,965	↑	\$2,955	↔	\$2,925	↑	↑	60	May 24	\$2,953	-\$28	467	7,020
Mon, May 15,	\$2,980	-\$6	\$2,955	↔	\$2,953	↔	\$2,920	↑	↑	60	Jul 24	\$2,929	-\$26	374	5,333
Fri, May 12,	\$2,986	-\$17	\$2,950	↔	\$2,950	↔	\$2,914	↑	↑	60	Sep 24	\$2,907	-\$24	79	3,624
Thu, May 11,	\$3,003	-\$23	\$2,945	↔	\$2,946	↑	\$2,906	↑	↔	60	Dec 24	\$2,877	-\$21	27	1,014
Wed, May 10,	\$3,026	\$27	\$2,937	↔	\$2,941	↑	\$2,897	↑	↔	58					
% Pos. Closes /5	Mon	Tues	Wed	Thurs	Fri										
Prior 50 Days	45%	70%	50%	40%	78%										

Rolling 50 Day Chart



Contract Closes



/ 1 Prior prices may reflect different contracts when there is a transition to the status of "Active Contract".

/ 2 Indicators of the simple moving averages (10, 20, & 40 day) are horizontal unless the trend is statistically significant. (critical t value is 95 percentile)

/ 3 Proprietary indicator implying if the price trend is upward, downward or insignificant.

/ 4 Relative Streight Index (RSI) can indicate potential highs or lows of a trading range when the price trend is not significant. (RSI of 30 is low & 70 high)

/ 5 Percentile of positive closes on particular weekdays. (prior 50 days)

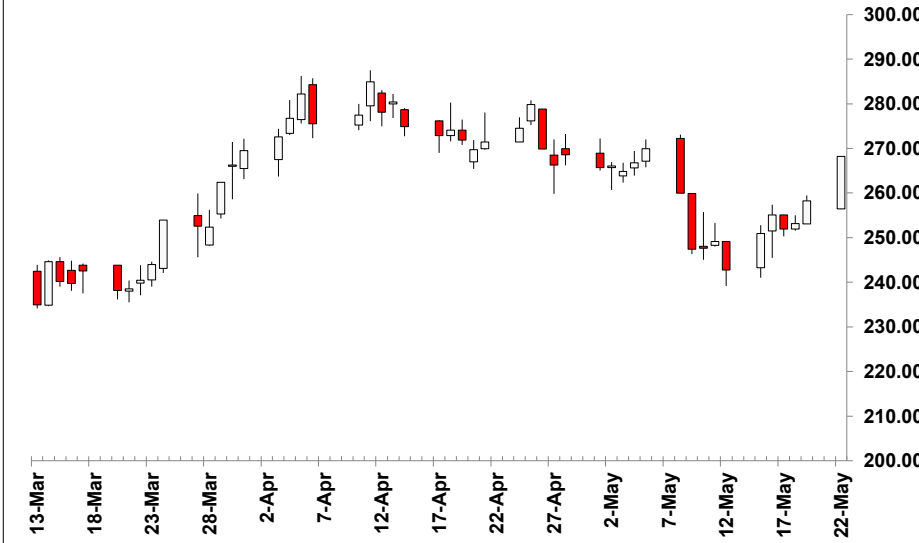
v

ORANGE JUICE - A July 2023 - Active Contract - (cents/lb)

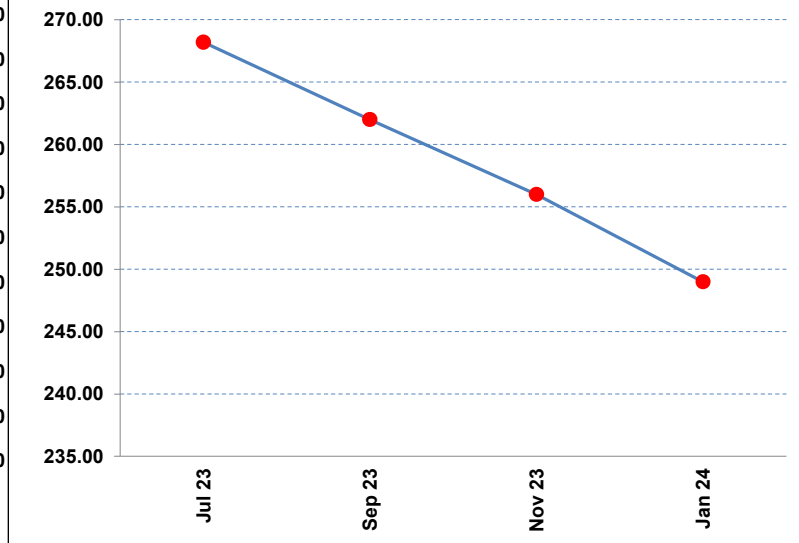
Monday, May 22, 2023

	Close /1	Change	10 MA /2	/2	20 MA /2	/2	40 MA /2	/2	/3	RSI /4	Contract	Close	Change	Volume	Open Interest
Mon, May 22,	268.20	10.00	252.45	↑	260.12	↔	266.07	↔	↓	48	Jul 23	268.20	10.00	622	6,931
Fri, May 19,	258.20	5.05	251.63	↔	260.43	↔	265.71	↔	↓	45	Sep 23	262.00	10.00	110	893
Thu, May 18,	253.15	1.20	252.80	↔	261.10	↔	265.35	↔	↓	42	Nov 23	256.00	9.35	37	517
Wed, May 17,	251.95	-3.15	254.16	↔	261.92	↔	265.04	↔	↓	40	Jan 24	249.00	8.60	1	34
Tue, May 16,	255.10	4.20	255.45	↔	262.92	↔	264.70	↔	↓	39					
Mon, May 15,	250.90	8.15	256.55	↔	263.87	↓	264.28	↔	↓	36					
Fri, May 12,	242.75	-6.40	258.03	↓	264.97	↓	264.07	↔	↓	37					
Thu, May 11,	249.15	1.50	260.61	↔	266.57	↓	263.99	↔	↔	41					
Wed, May 10,	247.65	0.20	262.32	↓	268.13	↓	263.77	↔	↔	44					
% Pos. Closes /5	Mon	Tues	Wed	Thurs	Fri										
Prior 50 Days	45%	90%	40%	70%	56%										

Rolling 50 Day Chart



Contract Closes



/ 1 Prior prices may reflect different contracts when there is a transition to the status of "Active Contract".

/ 2 Indicators of the simple moving averages (10, 20, & 40 day) are horizontal unless the trend is statistically significant. (critical t value is 95 percentile)

/ 3 Proprietary indicator implying if the price trend is upward, downward or insignificant.

/ 4 Relative Streight Index (RSI) can indicate potential highs or lows of a trading range when the price trend is not significant. (RSI of 30 is low & 70 high)

/ 5 Percentile of positive closes on particular weekdays. (prior 50 days)

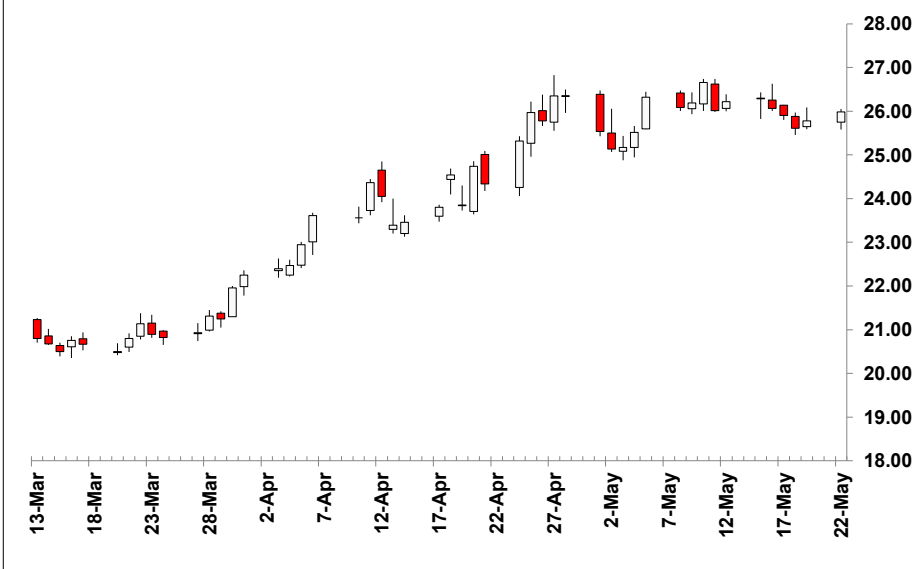
v

SUGAR #11 WORLD July 2023 - Active Contract - (cents/lb)

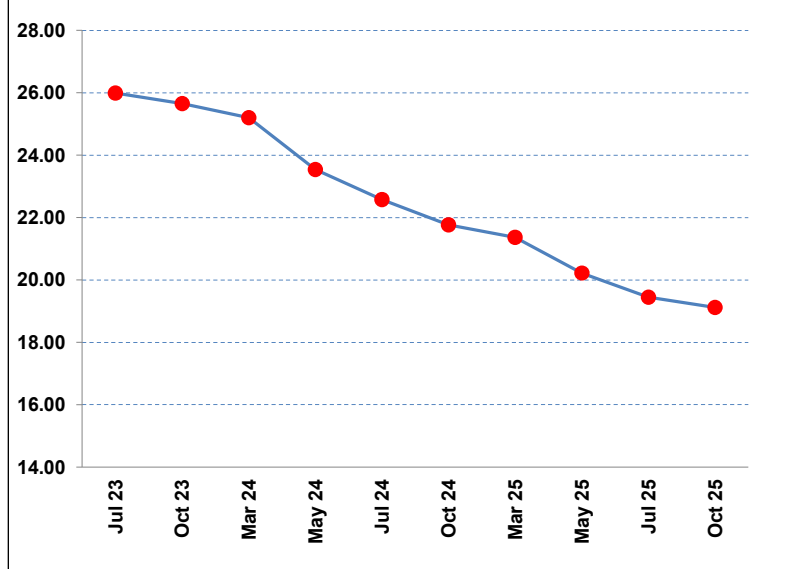
Monday, May 22, 2023

	Close /1	Change	10 MA /2	/2	20 MA /2	/2	40 MA /2	/2	/3	RSI /4	Contract	Close	Change	Volume	Open Interest	
Mon, May 22,	25.99	0.21	26.07	↔	25.95	↔	24.59	↑	↑	57	Jul 23	25.99	0.21	46,968	386,093	
Fri, May 19,	25.78	0.17	26.08	↔	25.92	↔	24.46	↑	↑	58	Oct 23	25.65	0.16	27,525	252,046	
Thu, May 18,	25.61	-0.30	26.14	↓	25.84	↑	24.34	↑	↑	59	Mar 24	25.20	0.14	9,875	150,589	
Wed, May 17,	25.91	-0.16	26.13	↔	25.80	↔	24.22	↑	↑	61	May 24	23.54	0.14	2,667	54,810	
Tue, May 16,	26.07	-0.22	26.06	↔	25.70	↑	24.10	↑	↑	63	Jul 24	22.58	0.15	1,691	54,010	
Mon, May 15,	26.29	0.07	25.96	↑	25.62	↑	23.96	↑	↔	64	Oct 24	21.77	0.15	419	35,136	
Fri, May 12,	26.22	0.20	25.89	↔	25.50	↑	23.82	↑	↔	64	Mar 25	21.37	0.14	166	22,331	
Thu, May 11,	26.02	-0.64	25.90	↔	25.36	↑	23.68	↑	↑	65	May 25	20.22	0.14	82	6,119	
Wed, May 10,	26.66	0.47	25.93	↔	25.23	↑	23.54	↑	↑	66	Jul 25	19.45	0.13	61	6,123	
% Pos. Closes /5	Mon	Tues	Wed	Thurs	Fri											
Prior 50 Days	45%	70%	50%	70%	56%											

Rolling 50 Day Chart



Contract Closes



/ 1 Prior prices may reflect different contracts when there is a transition to the status of "Active Contract".

/ 2 Indicators of the simple moving averages (10, 20, & 40 day) are horizontal unless the trend is statistically significant. (critical t value is 95 percentile)

/ 3 Proprietary indicator implying if the price trend is upward, downward or insignificant.

/ 4 Relative Strength Index (RSI) can indicate potential highs or lows of a trading range when the price trend is not significant. (RSI of 30 is low & 70 high)

/ 5 Percentile of positive closes on particular weekdays. (prior 50 days)

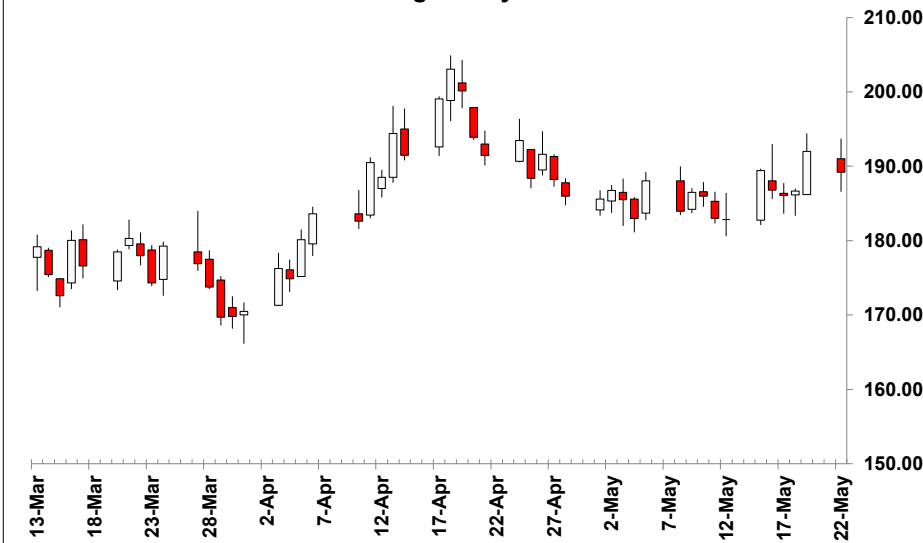
v

COFFEE July 2023 - Active Contract - (cents/lb)

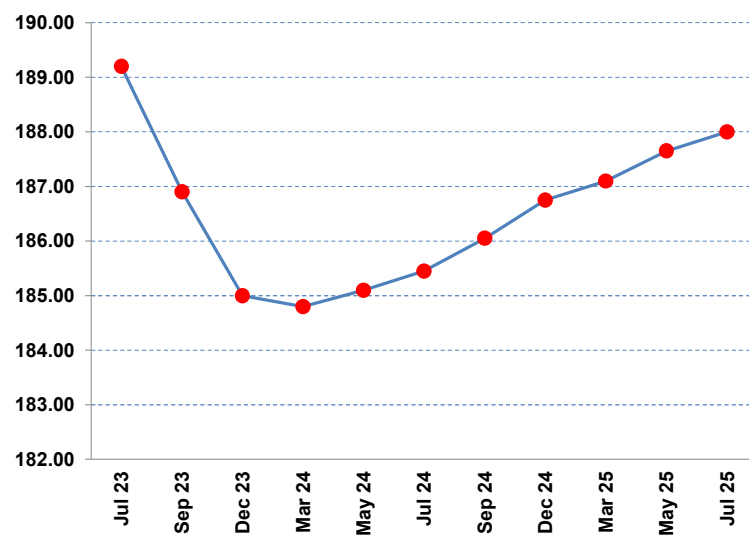
Monday, May 22, 2023

	Close /1	Change	10 MA /2	/2	20 MA /2	/2	40 MA /2	/2	/3	RSI /4	Contract	Close	Change	Volume	Open Interest
Mon, May 22,	189.20	-2.80	186.84	↔	186.77	↔	185.99	↔	↑	52	Jul 23	189.20	-2.80	22,894	76,001
Fri, May 19,	192.00	5.35	186.32	↑	186.98	↔	185.74	↔	↑	52	Sep 23	186.90	-2.40	10,120	51,718
Thu, May 18,	186.65	0.60	185.92	↔	186.95	↔	185.29	↔	↑	50	Dec 23	185.00	-2.30	5,272	34,814
Wed, May 17,	186.05	-0.75	185.55	↔	187.32	↓	185.08	↔	↔	49	Mar 24	184.80	-2.20	1,507	16,905
Tue, May 16,	186.80	-2.60	185.50	↔	188.02	↓	184.93	↔	↔	49	May 24	185.10	-2.05	325	7,252
Mon, May 15,	189.40	6.55	185.49	↔	188.83	↓	184.73	↔	↔	49	Jul 24	185.45	-1.95	127	3,569
Fri, May 12,	182.85	-0.15	185.11	↔	189.32	↓	184.41	↔	↔	48	Sep 24	186.05	-1.85	265	3,660
Thu, May 11,	183.00	-2.95	185.42	↔	189.75	↔	184.34	↔	↔	49	Dec 24	186.75	-1.75	245	2,804
Wed, May 10,	185.95	-0.55	185.94	↔	190.32	↔	184.08	↔	↔	49	Mar 25	187.10	-1.80	11	425
% Pos. Closes /5	Mon	Tues	Wed	Thurs	Fri						May 25	187.65	-1.65	2	116
Prior 50 Days	64%	50%	30%	40%	44%						Jul 25	188.00	-1.50	0	42

Rolling 50 Day Chart



Contract Closes



/ 1 Prior prices may reflect different contracts when there is a transition to the status of "Active Contract".

/ 2 Indicators of the simple moving averages (10, 20, & 40 day) are horizontal unless the trend is statistically significant. (critical t value is 95 percentile)

/ 3 Proprietary indicator implying if the price trend is upward, downward or insignificant.

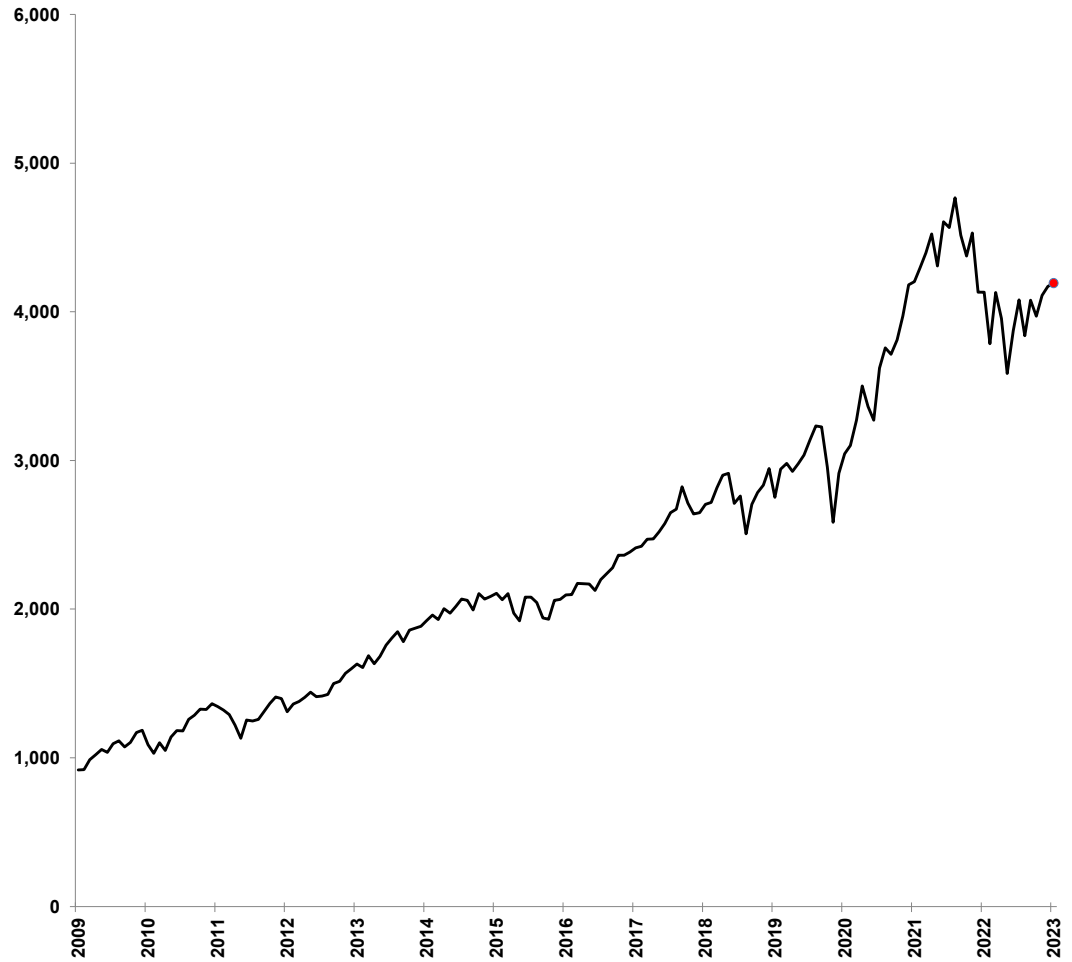
/ 4 Relative Strength Index (RSI) can indicate potential highs or lows of a trading range when the price trend is not significant. (RSI of 30 is low & 70 high)

/ 5 Percentile of positive closes on particular weekdays. (prior 50 days)

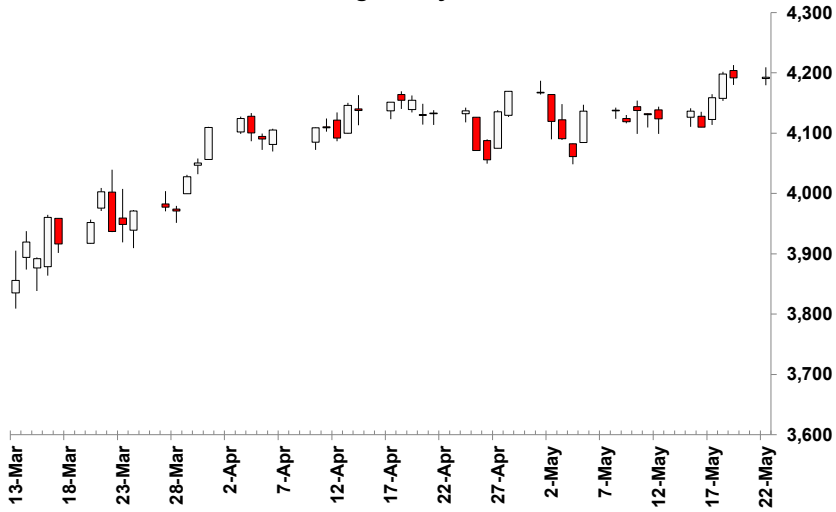
v

	Close /1	Change	10 MA /2	/2	20 MA /2	/2	40 MA /2	/2	/3	RSI /4
Mon, May 22,	4,193	1	4,150	↔	4,132	↑	4,116	↑	↑	58
Fri, May 19,	4,192	-6	4,144	↔	4,129	↔	4,111	↑	↑	57
Thu, May 18,	4,198	39	4,139	↑	4,127	↔	4,105	↑	↑	55
Wed, May 17,	4,159	49	4,125	↑	4,123	↔	4,098	↑	↔	53
Tue, May 16,	4,110	-26	4,118	↔	4,123	↔	4,094	↔	↔	53
Mon, May 15,	4,136	12	4,119	↔	4,125	↔	4,090	↑	↔	54
Fri, May 12,	4,124	-7	4,123	↔	4,126	↔	4,085	↑	↑	54
Thu, May 11,	4,131	-7	4,127	↔	4,127	↔	4,081	↑	↑	54
Wed, May 10,	4,138	18	4,128	↔	4,127	↔	4,075	↑	↑	52
% Pos. Closes /5	Mon	Tues	Wed	Thurs	Fri					
Prior 50 Days	91%	20%	40%	60%	56%					

Rolling 15 Year Chart: Month Ending Prices



Rolling 50 Day Chart



/1 Prior prices may reflect different contracts when there is a transition to the status of "Active Contract".

/2 Indicators of the simple moving averages (10, 20, & 40 day) are horizontal unless the trend is statistically significant. (critical t value is 95 percentile)

/3 Proprietary indicator implying if the price trend is upward, downward or insignificant.

/4 Relative Strenght Index (RSI) can indicate potential highs or lows of a trading range when the price trend is not significant. (RSI of 30 is low & 70 high)

/5 Percentile of positive closes on particular weekdays. (prior 50 days)

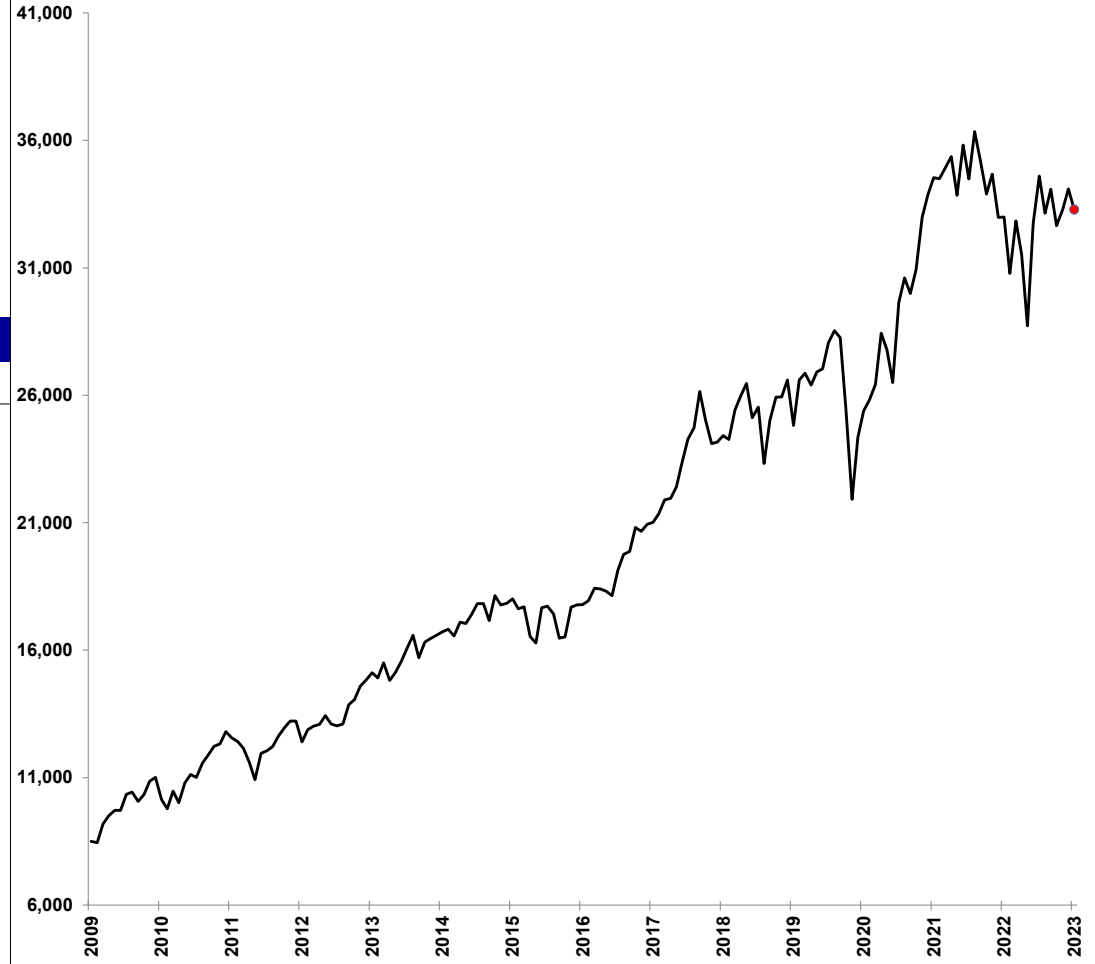


DOW JONES 30 INDUSTRIALS

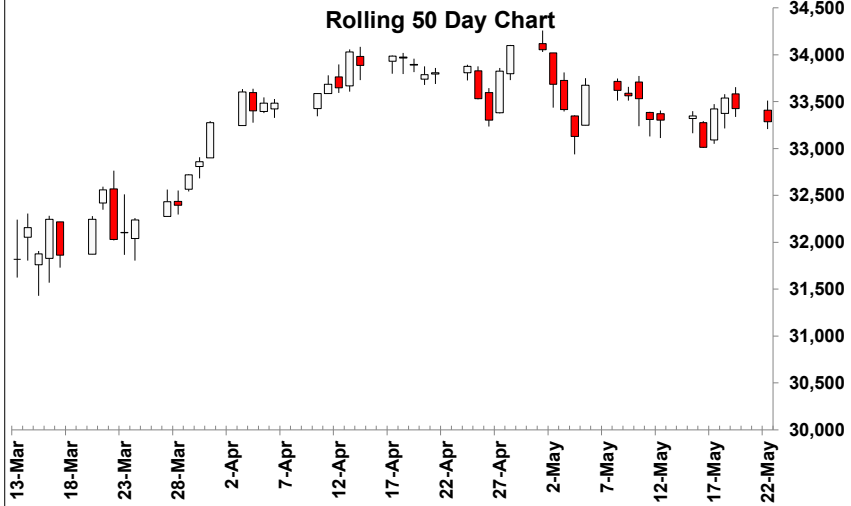
Monday, May 22, 2023

	Close /1	Change	10 MA /2	20 MA /2	40 MA /2 /3	RSI /4
Mon, May 22,	33,287	-140	33,373 ↔	33,503 ↔	33,497 ↑ ↓	48
Fri, May 19,	33,427	-109	33,407 ↔	33,533 ↔	33,471 ↑ ↓	48
Thu, May 18,	33,536	115	33,431 ↔	33,552 ↔	33,438 ↑ ↔	47
Wed, May 17,	33,421	409	33,391 ↔	33,564 ↔	33,400 ↑ ↔	46
Tue, May 16,	33,012	-336	33,390 ↔	33,588 ↓	33,379 ↔ ↔	46
Mon, May 15,	33,349	48	33,457 ↔	33,636 ↓	33,359 ↔ ↔	48
Fri, May 12,	33,301	-9	33,527 ↓	33,668 ↓	33,322 ↑ ↔	49
Thu, May 11,	33,310	-222	33,607 ↓	33,697 ↓	33,296 ↔ ↔	50
Wed, May 10,	33,531	-30	33,659 ↔	33,733 ↔	33,260 ↑ ↔	50
% Pos. Closes /5	Mon	Tues	Wed	Thurs	Fri	
Prior 50 Days	64%	40%	50%	80%	56%	

Rolling 15 Year Chart: Month Ending Prices



Rolling 50 Day Chart



/1 Prior prices may reflect different contracts when there is a transition to the status of "Active Contract".

/2 Indicators of the simple moving averages (10, 20, & 40 day) are horizontal unless the trend is statistically significant. (critical t value is 95 percentile)

/3 Proprietary indicator implying if the price trend is upward, downward or insignificant.

/4 Relative Strenght Index (RSI) can indicate potential highs or lows of a trading range when the price trend is not significant. (RSI of 30 is low & 70 high)

/5 Percentile of positive closes on particular weekdays. (prior 50 days)



US TREASURY BOND June 2023 - Active Contract

Monday, May 22, 2023

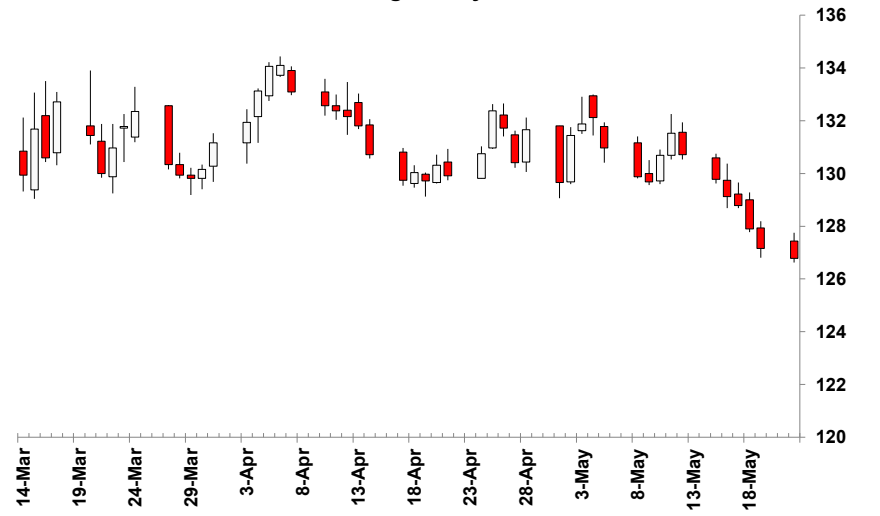
	Close /1	Change	10 MA /2	20 MA /2	40 MA /2	/3	RSI /4
Mon, May 22,	126 25/32	- 12/32	129 7/32 ↔	130 7/32 ↓	130 25/32 ↔	↓	39
Fri, May 19,	127 5/32	- 24/32	129 17/32 ↔	130 13/32 ↓	130 28/32 ↓	↓	41
Thu, May 18,	127 29/32	- 28/32	129 29/32 ↓	130 18/32 ↔	131 ↓	↓	44
Wed, May 17,	128 25/32	- 11/32	130 11/32 ↓	130 21/32 ↔	131 3/32 ↓	↓	47
Tue, May 16,	129 4/32	- 21/32	130 20/32 ↓	130 23/32 ↔	131 5/32 ↔	↓	48
Mon, May 15,	129 25/32	- 30/32	130 28/32 ↔	130 24/32 ↔	131 6/32 ↔	↓	48
Fri, May 12,	130 23/32	- 26/32	130 27/32 ↔	130 24/32 ↔	131 7/32 ↔	↓	48
Thu, May 11,	131 17/32	27/32	130 30/32 ↔	130 24/32 ↔	131 9/32 ↔	↓	49
Wed, May 10,	130 22/32	1	130 27/32 ↔	130 25/32 ↔	131 8/32 ↔	↓	49

% Pos. Closes /5	Mon	Tues	Wed	Thurs	Fri
Prior 50 Days	20%	40%	50%	50%	40%

Rolling 15 Year Chart: Month Ending Price of Active Contract



Rolling 50 Day Chart



/ 1 Prior prices may reflect different contracts when there is a transition to the status of "Active Contract".

/ 2 Indicators of the simple moving averages (10, 20, & 40 day) are horizontal unless the trend is statistically significant. (critical t value is 95 percentile)

/ 3 Proprietary indicator implying if the price trend is upward, downward or insignificant.

/ 4 Relative Strength Index (RSI) can indicate potential highs or lows of a trading range when the price trend is not significant. (RSI of 30 is low & 70 high)

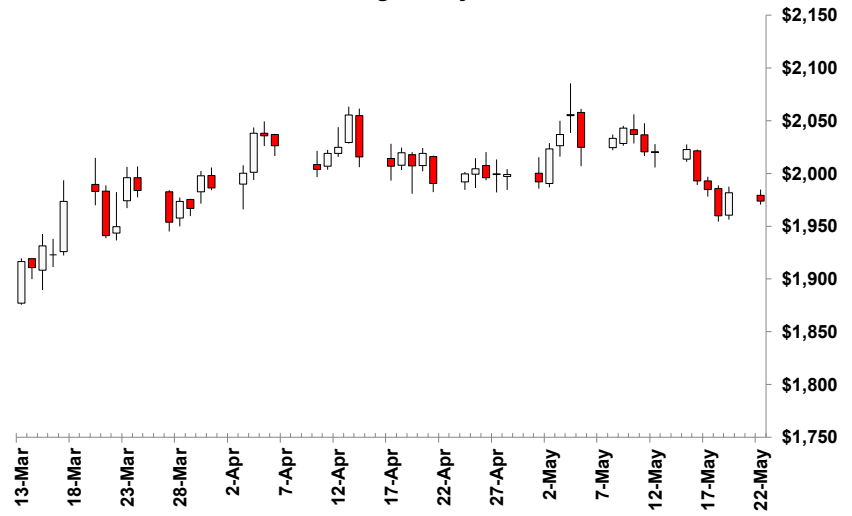
/ 5 Percentile of positive closes on particular weekdays. (prior 50 days)

	Close /1	Change	10 MA /2	/2	20 MA /2	/2	40 MA /2	/2	/3	RSI /4
Mon, May 22,	\$1,974	-\$8	\$2,004	↓	\$2,010	↔	\$2,009	↔	↔	43
Fri, May 19,	\$1,982	\$22	\$2,010	↔	\$2,011	↔	\$2,009	↔	↔	45
Thu, May 18,	\$1,960	-\$25	\$2,014	↓	\$2,012	↔	\$2,009	↔	↔	47
Wed, May 17,	\$1,985	-\$8	\$2,023	↓	\$2,015	↔	\$2,009	↔	↑	50
Tue, May 16,	\$1,993	-\$30	\$2,029	↓	\$2,016	↔	\$2,008	↔	↑	52
Mon, May 15,	\$2,023	\$3	\$2,032	↔	\$2,017	↔	\$2,008	↔	↑	55
Fri, May 12,	\$2,020	-\$1	\$2,029	↔	\$2,016	↔	\$2,006	↔	↑	56
Thu, May 11,	\$2,021	-\$17	\$2,027	↔	\$2,016	↔	\$2,004	↑	↑	56
Wed, May 10,	\$2,037	-\$6	\$2,024	↔	\$2,018	↔	\$2,002	↑	↑	59
% Pos. Closes /5	Mon	Tues	Wed	Thurs	Fri					
Prior 50 Days	45%	70%	40%	60%	33%					

Rolling 15 Year Chart: Month Ending Price of Active Contract



Rolling 50 Day Chart



/ 1 Prior prices may reflect different contracts when there is a transition to the status of "Active Contract".

/ 2 Indicators of the simple moving averages (10, 20, & 40 day) are horizontal unless the trend is statistically significant. (critical t value is 95 percentile)

/ 3 Proprietary indicator implying if the price trend is upward, downward or insignificant.

/ 4 Relative Strenght Index (RSI) can indicate potential highs or lows of a trading range when the price trend is not significant. (RSI of 30 is low & 70 high)

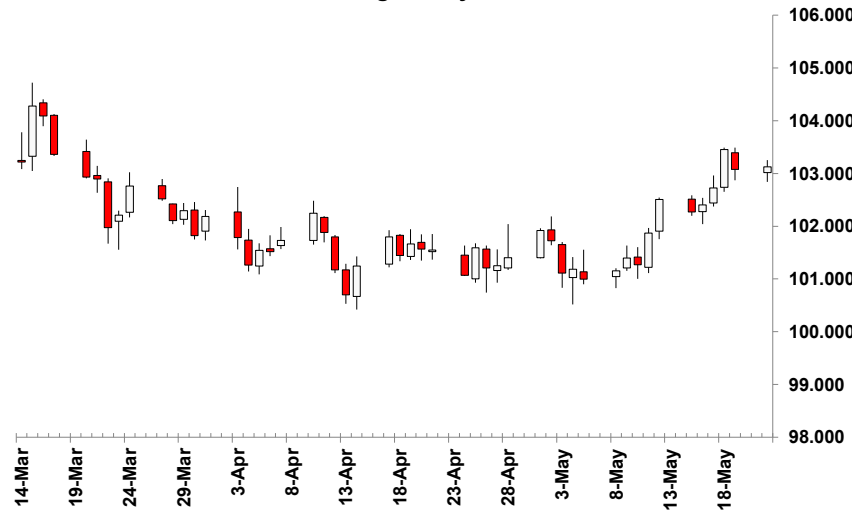
/ 5 Percentile of positive closes on particular weekdays. (prior 50 days)

v

	Close /1	Change	10 MA /2	/2	20 MA /2	/2	40 MA /2	/2	/3	RSI /4
Mon, May 22,	103.125	0.046	102.411	↑	101.883	↔	101.757	↔	↑	61
Fri, May 19,	103.079	-0.376	102.214	↑	101.780	↑	101.742	↔	↑	60
Thu, May 18,	103.455	0.729	102.006	↑	101.704	↑	101.734	↔	↑	60
Wed, May 17,	102.726	0.322	101.779	↑	101.610	↑	101.703	↔	↔	57
Tue, May 16,	102.404	0.133	101.618	↔	101.557	↔	101.684	↔	↔	54
Mon, May 15,	102.271	-0.238	101.550	↔	101.509	↔	101.696	↔	↔	52
Fri, May 12,	102.509	0.636	101.515	↔	101.485	↔	101.713	↔	↔	50
Thu, May 11,	101.873	0.604	101.404	↔	101.422	↑	101.734	↓	↔	46
Wed, May 10,	101.269	-0.130	101.342	↔	101.363	↔	101.789	↓	↓	45

% Pos. Closes /5	Mon	Tues	Wed	Thurs	Fri
Prior 50 Days	50%	30%	50%	50%	70%

Rolling 50 Day Chart



Rolling 15 Year Chart: Month Ending Prices



/ 1 Prior prices may reflect different contracts when there is a transition to the status of "Active Contract".

/ 2 Indicators of the simple moving averages (10, 20, & 40 day) are horizontal unless the trend is statistically significant. (critical t value is 95 percentile)

/ 3 Proprietary indicator implying if the price trend is upward, downward or insignificant.

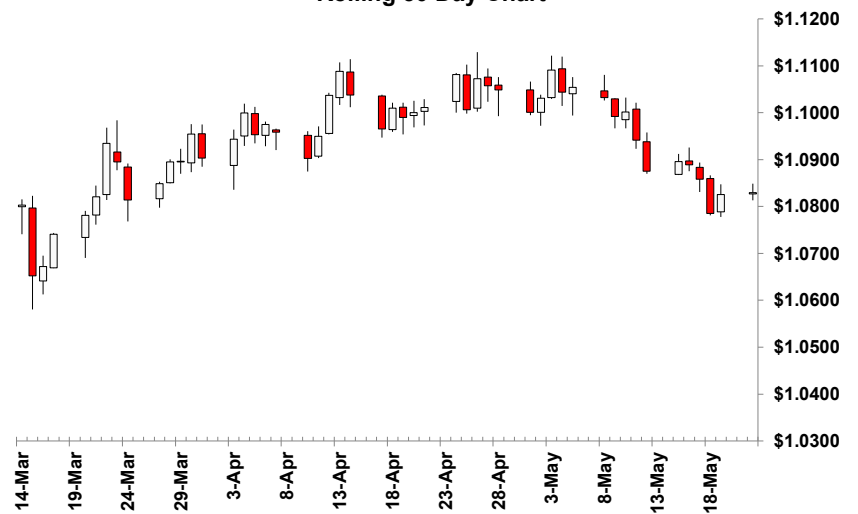
/ 4 Relative Strenght Index (RSI) can indicate potential highs or lows of a trading range when the price trend is not significant. (RSI of 30 is low & 70 high)

/ 5 Percentile of positive closes on particular weekdays. (prior 50 days)

	Close /1	Change	10 MA /2	/2	20 MA /2	/2	40 MA /2	/2	/3	RSI /4
Mon, May 22,	1.0830	0.0004	1.0889	↓	1.0967	↔	1.0972	↔	↓	39
Fri, May 19,	1.0826	0.0041	1.0910	↓	1.0979	↓	1.0973	↔	↓	39
Thu, May 18,	1.0785	-0.0073	1.0933	↓	1.0988	↓	1.0972	↔	↓	40
Wed, May 17,	1.0858	-0.0031	1.0958	↓	1.0999	↔	1.0975	↔	↔	42
Tue, May 16,	1.0889	-0.0007	1.0982	↓	1.1006	↔	1.0977	↔	↔	44
Mon, May 15,	1.0896	0.0020	1.0996	↔	1.1012	↔	1.0975	↔	↔	46
Fri, May 12,	1.0876	-0.0066	1.1006	↔	1.1015	↔	1.0972	↔	↔	48
Thu, May 11,	1.0942	-0.0060	1.1024	↓	1.1023	↓	1.0969	↑	↔	51
Wed, May 10,	1.1002	0.0010	1.1035	↔	1.1031	↓	1.0962	↑	↑	53

% Pos. Closes /5	Mon	Tues	Wed	Thurs	Fri
Prior 50 Days	60%	70%	60%	50%	40%

Rolling 50 Day Chart



Rolling 15 Year Chart: Month Ending Prices



/ 1 Prior prices may reflect different contracts when there is a transition to the status of "Active Contract".

/ 2 Indicators of the simple moving averages (10, 20, & 40 day) are horizontal unless the trend is statistically significant. (critical t value is 95 percentile)

/ 3 Proprietary indicator implying if the price trend is upward, downward or insignificant.

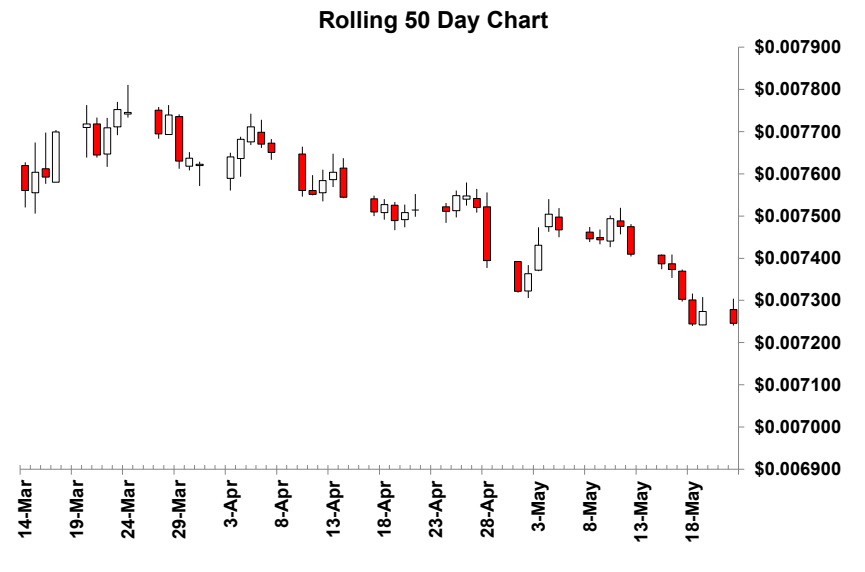
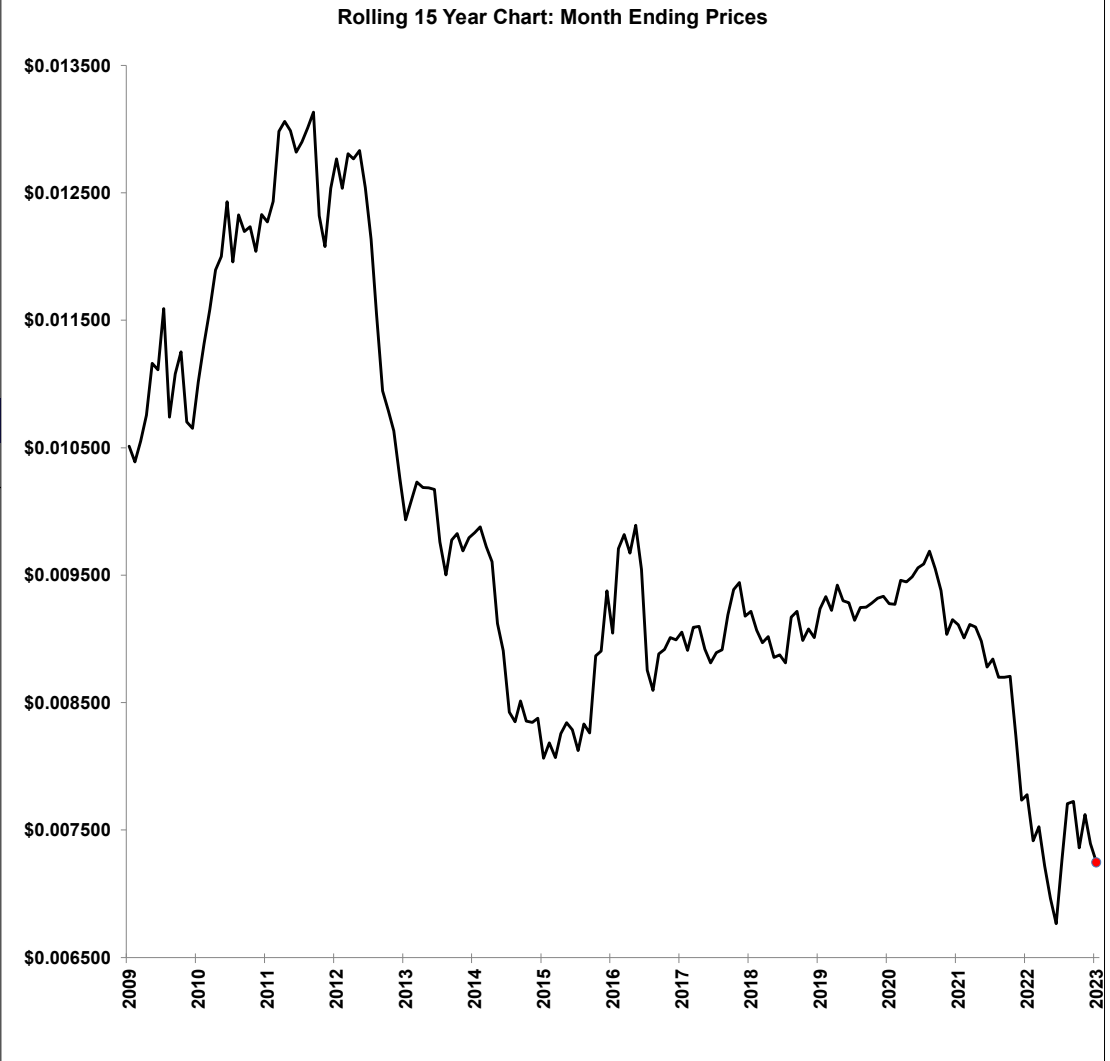
/ 4 Relative Strenght Index (RSI) can indicate potential highs or lows of a trading range when the price trend is not significant. (RSI of 30 is low & 70 high)

/ 5 Percentile of positive closes on particular weekdays. (prior 50 days)

v

	Close /1	Change	10 MA /2	20 MA /2	40 MA /2	/3	RSI /4
Mon, May 22,	0.007246	-0.000027	0.007365 ↔	0.007410 ↓	0.007502 ↓	↓	34
Fri, May 19,	0.007274	0.000030	0.007385 ↔	0.007423 ↓	0.007513 ↓	↓	36
Thu, May 18,	0.007244	-0.000059	0.007404 ↓	0.007435 ↓	0.007525 ↓	↔	37
Wed, May 17,	0.007303	-0.000070	0.007430 ↓	0.007448 ↓	0.007538 ↓	↔	41
Tue, May 16,	0.007373	-0.000014	0.007443 ↔	0.007458 ↔	0.007548 ↓	↔	44
Mon, May 15,	0.007387	-0.000023	0.007442 ↔	0.007465 ↓	0.007555 ↓	↓	45
Fri, May 12,	0.007410	-0.000066	0.007436 ↔	0.007471 ↔	0.007563 ↓	↓	45
Thu, May 11,	0.007476	-0.000018	0.007434 ↔	0.007478 ↔	0.007570 ↔	↓	46
Wed, May 10,	0.007494	0.000050	0.007439 ↔	0.007485 ↔	0.007573 ↔	↓	47

% Pos. Closes /5	Mon	Tues	Wed	Thurs	Fri
Prior 50 Days	20%	50%	70%	50%	40%



/ 1 Prior prices may reflect different contracts when there is a transition to the status of "Active Contract".

/ 2 Indicators of the simple moving averages (10, 20, & 40 day) are horizontal unless the trend is statistically significant. (critical t value is 95 percentile)

/ 3 Proprietary indicator implying if the price trend is upward, downward or insignificant.

/ 4 Relative Strength Index (RSI) can indicate potential highs or lows of a trading range when the price trend is not significant. (RSI of 30 is low & 70 high)

/ 5 Percentile of positive closes on particular weekdays. (prior 50 days)