

Active Contracts /1	Mon Jun 03	Change	Fri May 31	Thu May 30	Wed May 29	Tue May 28	Fri May 24	Average Prior 5 Days
GRAIN FUTURES								
CORN July 2024 (\$/bu)	\$4.4350	-\$0.0275	\$4.4625	\$4.4875	\$4.5525	\$4.6250	\$4.6475	\$4.5550
WHEAT July 2024 (\$/bu)	\$6.7275	-\$0.0575	\$6.7850	\$6.8100	\$6.9275	\$7.0025	\$6.9725	\$6.8995
HARD RED WINTER WHEAT July 2024	\$7.0000	-\$0.0875	\$7.0875	\$7.0950	\$7.1975	\$7.3125	\$7.2125	\$7.1810
HARD RED SPRING WHEAT July 2024	\$7.3375	-\$0.0600	\$7.3975	\$7.4200	\$7.5200	\$7.5750	\$7.5275	\$7.4880
OATS July 2024 (\$/bu)	\$3.8750	\$0.0175	\$3.8575	\$3.8450	\$3.7700	\$3.7575	\$3.6950	\$3.7850
ROUGH RICE July 2024 (\$/cwt)	\$17.670	-\$0.160	\$17.830	\$17.840	\$18.090	\$18.340	\$18.485	\$18.117
OILSEED FUTURES								
SOYBEANS July 2024 (\$/bu)	\$11.8450	-\$0.2050	\$12.0500	\$12.0975	\$12.1400	\$12.2950	\$12.4800	\$12.2125
SOYBEAN MEAL July 2024 (\$/short ton)	\$359.50	-\$5.20	\$364.70	\$363.60	\$369.10	\$376.60	\$386.50	\$372.10
SOYBEAN OIL July 2024 (cents/lb)	44.14	-1.38	45.52	45.72	45.88	45.52	44.95	45.52
CANOLA July 2024 (CAD/MT)	661.0	0.8	660.2	671.7	668.7	672.2	666.7	667.9
LIVESTOCK FUTURES								
LIVE CATTLE August 2024 (\$/cwt)	\$178.88	\$0.43	\$178.45	\$179.78	\$180.20	\$181.83	\$181.13	\$180.28
FEEDER CATTLE August 2024 (\$/cwt)	\$256.20	-\$0.20	\$256.40	\$259.08	\$260.25	\$264.60	\$260.23	\$260.11
LEAN HOGS July 2024 (\$/cwt)	\$96.28	-\$0.85	\$97.13	\$96.95	\$96.33	\$96.53	\$97.23	\$96.83
ENERGY FUTURES								
CRUDE OIL July 2024 (\$/barrel)	\$74.05	-\$2.94	\$76.99	\$77.91	\$79.23	\$79.83	\$77.72	\$78.34
RBOB GASOLINE July 2024 (\$/gal)	\$2.3348	-\$0.0826	\$2.4174	\$2.4035	\$2.4599	\$2.5018	\$2.4696	\$2.4504
ETHANOL June 2024 (\$/gal)	\$2.161	\$0.000	\$2.161	\$2.161	\$2.161	\$2.161	\$2.161	\$2.161
NEW YORK HARBOR ULSD July 2024	\$2.2911	-\$0.0931	\$2.3842	\$2.3917	\$2.4559	\$2.4833	\$2.4308	\$2.4292
NATURAL GAS July 2024 (\$/MMBtu)	\$2.774	\$0.187	\$2.587	\$2.572	\$2.666	\$2.825	\$2.773	\$2.685
FOOD AND FIBER FUTURES								
SUGAR #11 WORLD July 2024 (cents/lb)	18.78	0.59	18.19	18.19	18.35	18.73	18.41	18.37
COCOA July 2024 (\$/MT)	\$9,775	\$444	\$9,331	\$9,257	\$9,309	\$8,780	\$8,294	\$8,994
COFFEE July 2024 (cents/lb)	226.55	4.20	222.35	233.00	229.45	230.95	218.25	226.80
MILK CLASS III June 2024 (\$/cwt)	\$19.67	\$0.29	\$19.38	\$19.36	\$19.32	\$19.47	\$19.89	\$19.48
ORANGE JUICE - A July 2024 (cents/lb)	457.20	20.00	437.20	457.20	477.20	487.20	476.50	467.06
COTTON #2 July 2024 (cents/lb)	73.15	-3.00	76.15	77.76	81.10	82.43	80.52	79.59
FINANCIALS & ETC.								
DOW JONES 30 INDUSTRIALS	38,480	-206	38,686	38,111	38,442	38,853	39,070	38,632
S&P 500 INDEX	5,268	-9	5,278	5,235	5,267	5,306	5,305	5,278
GOLD August 2024 (\$/oz)	\$2,366	\$20	\$2,346	\$2,367	\$2,341	\$2,357	---	\$2,353
US TREASURY BOND September 2024	117 19/32	1 17/32	116 2/32	115 17/32	114 18/32	115 25/32	116 26/32	115 24/32
US DOLLAR INDEX June 2024	104.070	-0.557	104.627	104.658	105.034	104.539	104.638	104.699
EURO FX June 2024	\$1.0905	\$0.0055	\$1.0850	\$1.0845	\$1.0816	\$1.0869	\$1.0861	\$1.0848

/ 1 Prices of the prior week may reflect different contracts when there is a transition to the status of "Active Contract".

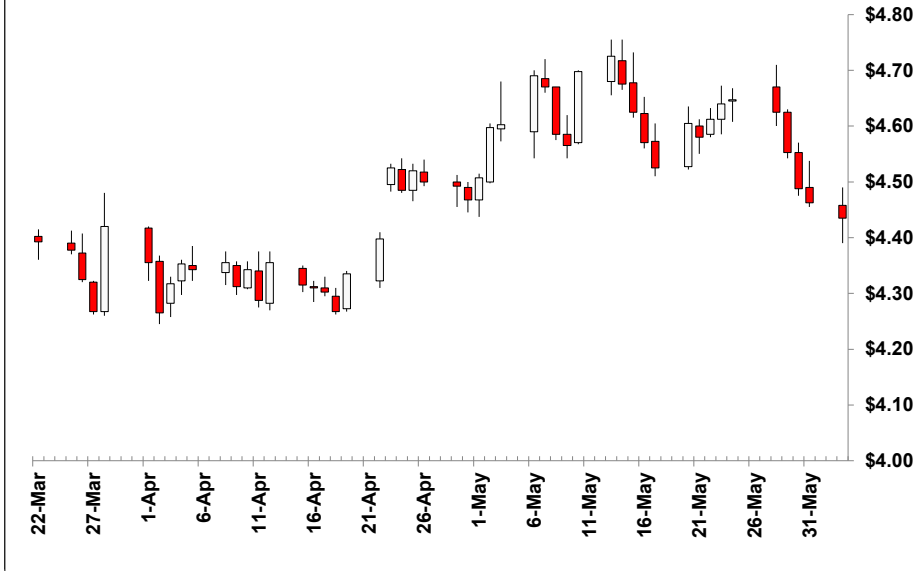


CORN July 2024 - Active Contract - (\$/bu)

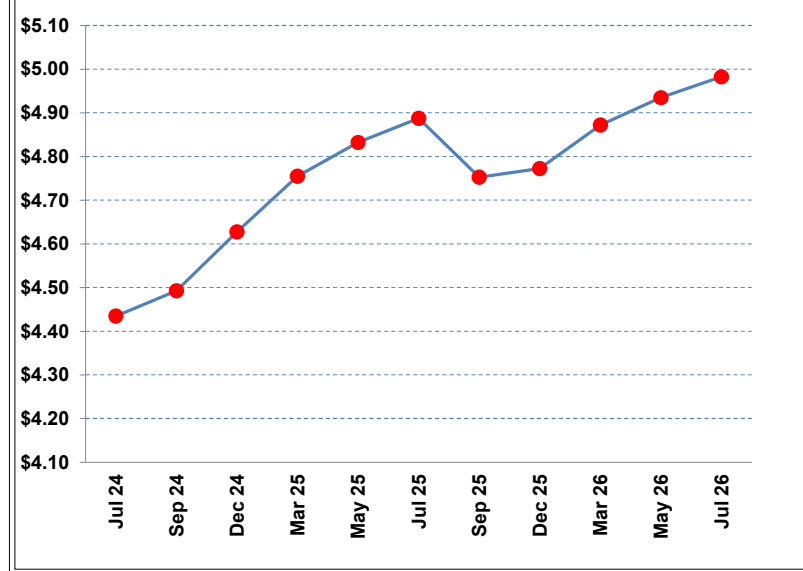
Monday, June 3, 2024

	Close /1	Change	10 MA /2	20 MA /2	40 MA /2	/3	RSI /4	Contract	Close	Change	Volume	Open Interest
Mon, Jun 03,	\$4.4350	-\$0.0275	\$4.5648 ⇄	\$4.5988 ↓	\$4.5063 ⇄	⇄	46	Jul 24	\$4.4350	-\$0.0275	238,972	645,643
Fri, May 31,	\$4.4625	-\$0.0250	\$4.5738 ⇄	\$4.6071 ⇄	\$4.5040 ⇄	⇄	50	Sep 24	\$4.4925	-\$0.0475	104,388	343,241
Thu, May 30,	\$4.4875	-\$0.0650	\$4.5845 ⇄	\$4.6139 ⇄	\$4.5013 ⇄	⇄	53	Dec 24	\$4.6275	-\$0.0425	121,471	439,340
Wed, May 29,	\$4.5525	-\$0.0725	\$4.5983 ⇄	\$4.6149 ⇄	\$4.4970 ⇄	⇄	55	Mar 25	\$4.7550	-\$0.0400	10,294	69,795
Tue, May 28,	\$4.6250	-\$0.0225	\$4.6105 ⇄	\$4.6106 ↑	\$4.4898 ↑	⇄	56	May 25	\$4.8325	-\$0.0375	4,617	19,332
Fri, May 24,	\$4.6475	\$0.0075	\$4.6205 ⇄	\$4.6040 ↑	\$4.4831 ↑	⇄	56	Jul 25	\$4.8875	-\$0.0325	3,643	33,871
Thu, May 23,	\$4.6400	\$0.0275	\$4.6255 ⇄	\$4.5966 ⇄	\$4.4774 ⇄	↑	54	Sep 25	\$4.7525	-\$0.0350	427	6,033
Wed, May 22,	\$4.6125	\$0.0325	\$4.6180 ⇄	\$4.5906 ⇄	\$4.4681 ↑	⇄	53	Dec 25	\$4.7725	-\$0.0375	1,815	36,546
Tue, May 21,	\$4.5800	-\$0.0250	\$4.6153 ⇄	\$4.5843 ⇄	\$4.4609 ⇄	↑	54	Mar 26	\$4.8725	-\$0.0375	39	1,162
% Pos. Closes /5	Mon	Tues	Wed	Thurs	Fri							
Prior 50 Days	50%	10%	40%	50%	50%							

Rolling 50 Day Chart



Contract Closes



/ 1 Prior prices may reflect different contracts when there is a transition to the status of "Active Contract".

/ 2 Indicators of the simple moving averages (10, 20, & 40 day) are horizontal unless the trend is statistically significant. (critical t value is 95 percentile)

/ 3 Proprietary indicator implying if the price trend is upward, downward or insignificant.

/ 4 Relative Streight Index (RSI) can indicate potential highs or lows of a trading range when the price trend is not significant. (RSI of 30 is low & 70 high)

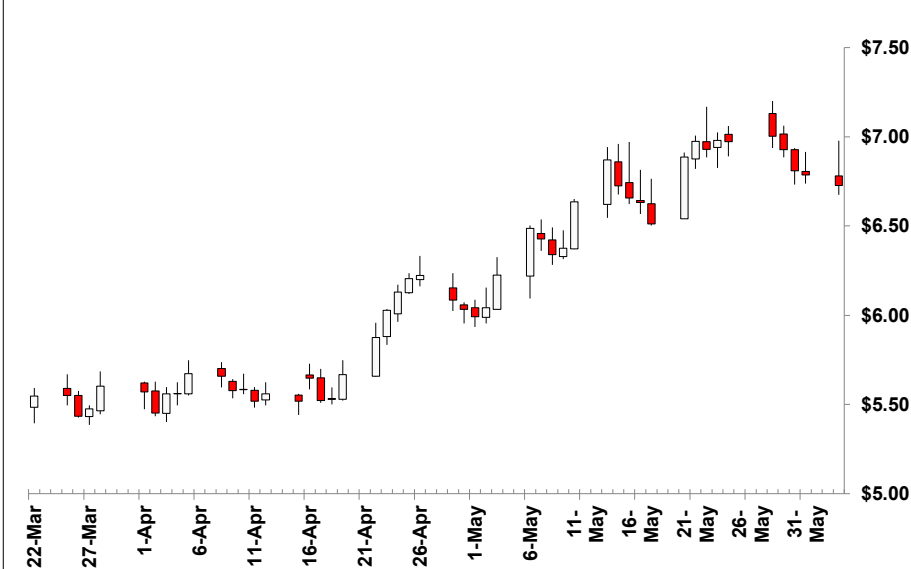
/ 5 Percentile of positive closes on particular weekdays. (prior 50 days)

WHEAT July 2024 - Active Contract - (\$/bu)

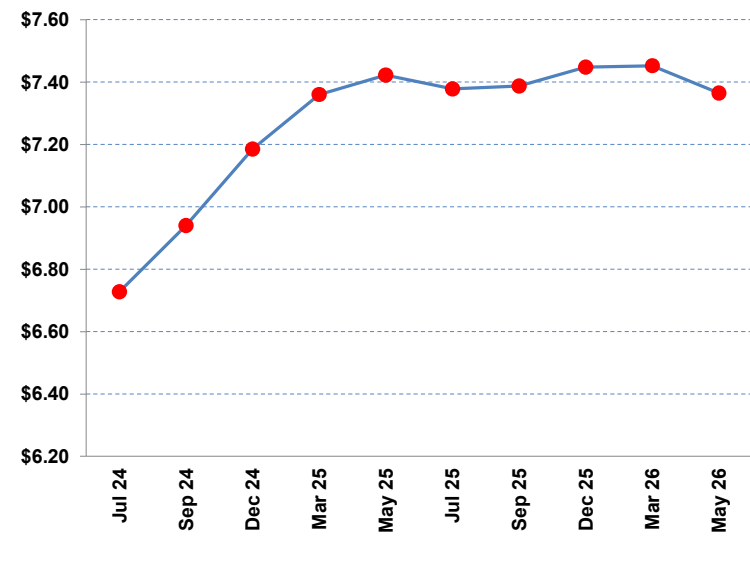
Monday, June 3, 2024

	Close /1	Change	10 MA /2	/2	20 MA /2	/2	40 MA /2	/2	/3	RSI /4	Contract	Close	Change	Volume	Open Interest
Mon, Jun 03,	\$6.7275	-\$0.0575	\$6.8998	↔	\$6.7330	↔	\$6.2820	↑	↑	62	Jul 24	\$6.7275	-\$0.0575	80,772	200,539
Fri, May 31,	\$6.7850	-\$0.0250	\$6.8783	↔	\$6.7079	↑	\$6.2556	↑	↑	65	Sep 24	\$6.9400	-\$0.0550	33,092	94,723
Thu, May 30,	\$6.8100	-\$0.1175	\$6.8630	↔	\$6.6708	↑	\$6.2251	↑	↑	67	Dec 24	\$7.1850	-\$0.0500	27,766	94,934
Wed, May 29,	\$6.9275	-\$0.0750	\$6.8478	↔	\$6.6299	↑	\$6.1938	↑	↑	68	Mar 25	\$7.3600	-\$0.0425	7,132	25,128
Tue, May 28,	\$7.0025	\$0.0300	\$6.8275	↔	\$6.5851	↑	\$6.1569	↑	↑	69	May 25	\$7.4225	-\$0.0400	2,490	7,208
Fri, May 24,	\$6.9725	-\$0.0075	\$6.8143	↔	\$6.5393	↑	\$6.1211	↑	↑	69	Jul 25	\$7.3775	-\$0.0450	2,834	11,492
Thu, May 23,	\$6.9800	\$0.0500	\$6.7805	↔	\$6.5018	↑	\$6.0869	↑	↑	67	Sep 25	\$7.3875	-\$0.0550	480	1,308
Wed, May 22,	\$6.9300	-\$0.0450	\$6.7200	↑	\$6.4630	↑	\$6.0493	↑	↑	67	Dec 25	\$7.4475	-\$0.0450	220	2,675
Tue, May 21,	\$6.9750	\$0.0875	\$6.6610	↑	\$6.4230	↑	\$6.0119	↑	↑	66	Mar 26	\$7.4525	-\$0.0500	48	652
May 26											May 26	\$7.3650	-\$0.0575	0	8
% Pos. Closes /5	Mon	Tues	Wed	Thurs	Fri										
Prior 50 Days	40%	20%	30%	60%	70%										

Rolling 50 Day Chart



Contract Closes



/1 Prior prices may reflect different contracts when there is a transition to the status of "Active Contract".

/2 Indicators of the simple moving averages (10, 20, & 40 day) are horizontal unless the trend is statistically significant. (critical t value is 95 percentile)

/3 Proprietary indicator implying if the price trend is upward, downward or insignificant.

/4 Relative Strength Index (RSI) can indicate potential highs or lows of a trading range when the price trend is not significant. (RSI of 30 is low & 70 high)

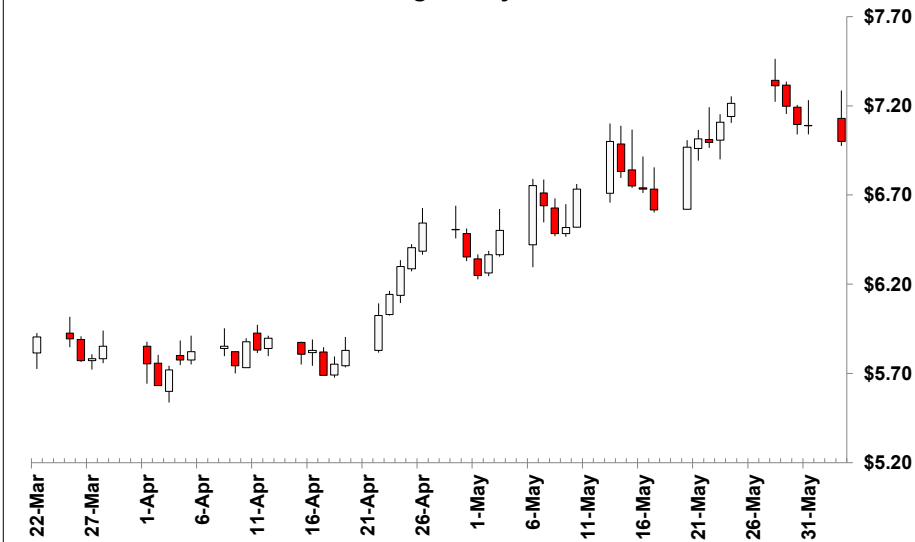
/5 Percentile of positive closes on particular weekdays. (prior 50 days)

HARD RED WINTER WHEAT July 2024 - Active Contract - (\$/bu)

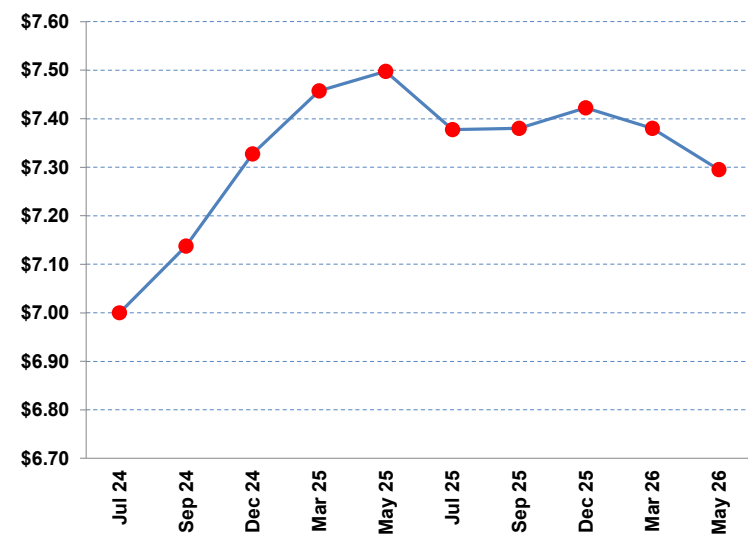
Monday, June 3, 2024

	Close /1	Change	10 MA /2	/2	20 MA /2	/2	40 MA /2	/2	/3	RSI /4	Contract	Close	Change	Volume	Open Interest
Mon, Jun 03,	\$7.0000	-\$0.0875	\$7.0990	↔	\$6.9025	↔	\$6.4888	↑	↑	64	Jul 24	\$7.0000	-\$0.0875	38,095	115,618
Fri, May 31,	\$7.0875	-\$0.0075	\$7.0608	↑	\$6.8776	↑	\$6.4594	↑	↑	66	Sep 24	\$7.1375	-\$0.0950	25,259	65,366
Thu, May 30,	\$7.0950	-\$0.1025	\$7.0253	↔	\$6.8415	↑	\$6.4266	↑	↑	67	Dec 24	\$7.3275	-\$0.0900	10,108	53,684
Wed, May 29,	\$7.1975	-\$0.1150	\$6.9908	↔	\$6.7993	↑	\$6.3922	↑	↑	68	Mar 25	\$7.4575	-\$0.0900	2,888	12,613
Tue, May 28,	\$7.3125	\$0.1000	\$6.9543	↔	\$6.7570	↑	\$6.3531	↑	↑	67	May 25	\$7.4975	-\$0.0775	1,015	2,475
Fri, May 24,	\$7.2125	\$0.1050	\$6.9230	↔	\$6.7166	↑	\$6.3141	↑	↑	66	Jul 25	\$7.3775	-\$0.0800	264	2,503
Thu, May 23,	\$7.1075	\$0.1125	\$6.8750	↑	\$6.6831	↑	\$6.2801	↑	↑	64	Sep 25	\$7.3800	-\$0.0750	86	363
Wed, May 22,	\$6.9950	-\$0.0200	\$6.8160	↑	\$6.6480	↑	\$6.2470	↑	↑	62	Dec 25	\$7.4225	-\$0.0775	69	246
Tue, May 21,	\$7.0150	\$0.0475	\$6.7650	↑	\$6.6133	↑	\$6.2164	↑	↑	62	Mar 26	\$7.3800	-\$0.0775	0	17
% Pos. Closes /5	Mon	Tues	Wed	Thurs	Fri						May 26	\$7.2950	-\$0.0775	0	4
Prior 50 Days	50%	30%	40%	60%	80%						Jul 26	\$6.8800	-\$0.0750	0	27

Rolling 50 Day Chart



Contract Closes



/ 1 Prior prices may reflect different contracts when there is a transition to the status of "Active Contract".

/ 2 Indicators of the simple moving averages (10, 20, & 40 day) are horizontal unless the trend is statistically significant. (critical t value is 95 percentile)

/ 3 Proprietary indicator implying if the price trend is upward, downward or insignificant.

/ 4 Relative Streight Index (RSI) can indicate potential highs or lows of a trading range when the price trend is not significant. (RSI of 30 is low & 70 high)

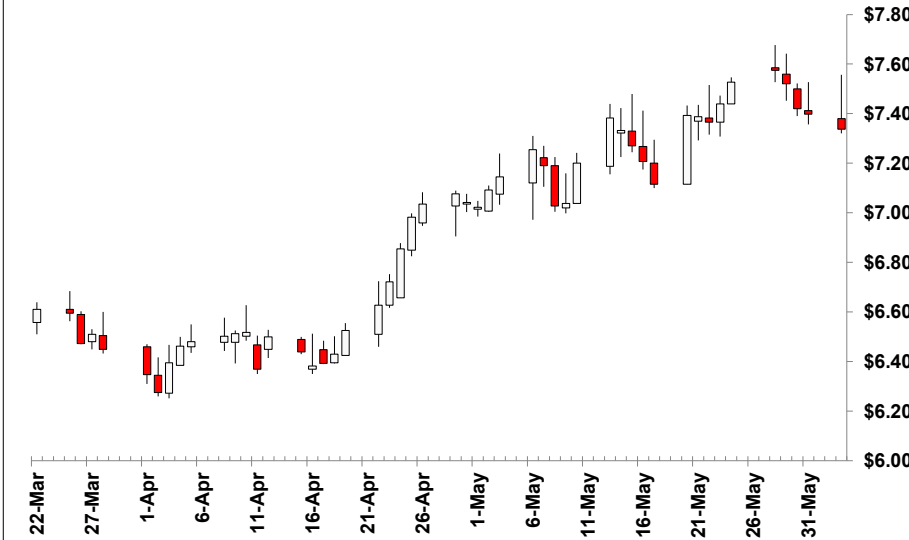
/ 5 Percentile of positive closes on particular weekdays. (prior 50 days)

HARD RED SPRING WHEAT July 2024 - Active Contract - (\$/bu)

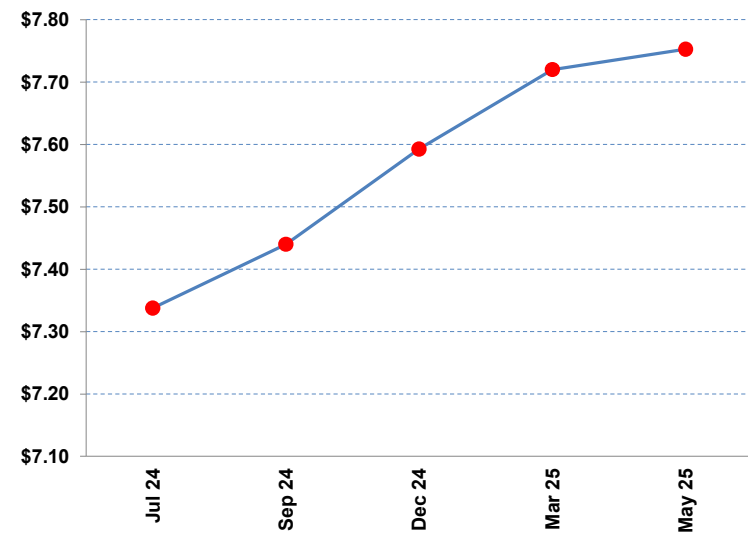
Monday, June 3, 2024

	Close /1	Change	10 MA /2	/2	20 MA /2	/2	40 MA /2	/2	/3	RSI /4	Contract	Close	Change	Volume	Open Interest
Mon, Jun 03,	\$7.3375	-\$0.0600	\$7.4363	↔	\$7.3190	↔	\$7.0139	↑	↑	62	Jul 24	\$7.3375	-\$0.0600	4,440	29,029
Fri, May 31,	\$7.3975	-\$0.0225	\$7.4140	↑	\$7.3094	↔	\$6.9924	↑	↑	65	Sep 24	\$7.4400	-\$0.0575	2,291	16,187
Thu, May 30,	\$7.4200	-\$0.1000	\$7.3950	↔	\$7.2941	↔	\$6.9691	↑	↑	66	Dec 24	\$7.5925	-\$0.0550	1,204	10,346
Wed, May 29,	\$7.5200	-\$0.0550	\$7.3800	↔	\$7.2743	↑	\$6.9434	↑	↑	67	Mar 25	\$7.7200	-\$0.0575	55	1,929
Tue, May 28,	\$7.5750	\$0.0475	\$7.3613	↔	\$7.2504	↑	\$6.9123	↑	↑	67	May 25	\$7.7525	-\$0.0575	7	231
Fri, May 24,	\$7.5275	\$0.0875	\$7.3420	↔	\$7.2255	↑	\$6.8816	↑	↑	66	Jul 25	\$7.7750	\$0.0000	4	113
Thu, May 23,	\$7.4400	\$0.0750	\$7.3093	↑	\$7.2009	↑	\$6.8547	↑	↑	63					
Wed, May 22,	\$7.3650	-\$0.0225	\$7.2690	↑	\$7.1780	↑	\$6.8314	↑	↑	62					
Tue, May 21,	\$7.3875	-\$0.0050	\$7.2353	↑	\$7.1525	↑	\$6.8091	↑	↑	62					
% Pos. Closes /5	Mon	Tues	Wed	Thurs	Fri										
Prior 50 Days	60%	60%	50%	60%	80%										

Rolling 50 Day Chart



Contract Closes



/ 1 Prior prices may reflect different contracts when there is a transition to the status of "Active Contract".

/ 2 Indicators of the simple moving averages (10, 20, & 40 day) are horizontal unless the trend is statistically significant. (critical t value is 95 percentile)

/ 3 Proprietary indicator implying if the price trend is upward, downward or insignificant.

/ 4 Relative Streight Index (RSI) can indicate potential highs or lows of a trading range when the price trend is not significant. (RSI of 30 is low & 70 high)

/ 5 Percentile of positive closes on particular weekdays. (prior 50 days)

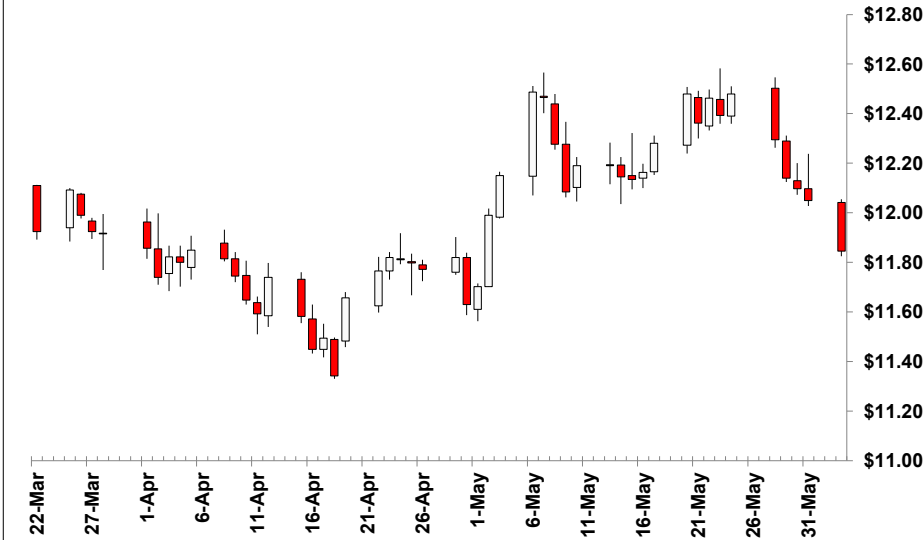


SOYBEANS July 2024 - Active Contract - (\$/bu)

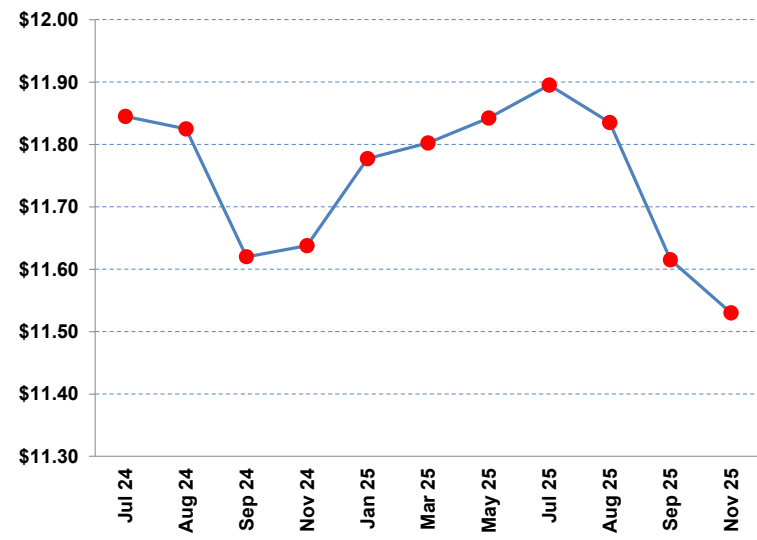
Monday, June 3, 2024

	Close /1	Change	10 MA /2	20 MA /2	40 MA /2	/3	RSI /4	Contract	Close	Change	Volume	Open Interest
Mon, Jun 03,	\$11.8450	-\$0.2050	\$12.2605 ↓	\$12.2514 ↓	\$11.9839 ⇌	↑	48	Jul 24	\$11.8450	-\$0.2050	108,615	323,027
Fri, May 31,	\$12.0500	-\$0.0475	\$12.3040 ⇌	\$12.2666 ⇌	\$11.9841 ⇌	↑	52	Aug 24	\$11.8250	-\$0.2100	25,321	63,423
Thu, May 30,	\$12.0975	-\$0.0425	\$12.3153 ⇌	\$12.2636 ⇌	\$11.9778 ⇌	↑	55	Sep 24	\$11.6200	-\$0.2250	16,688	37,581
Wed, May 29,	\$12.1400	-\$0.1550	\$12.3190 ⇌	\$12.2439 ↑	\$11.9709 ⇌	↑	58	Nov 24	\$11.6375	-\$0.2075	66,347	232,291
Tue, May 28,	\$12.2950	-\$0.1850	\$12.3195 ⇌	\$12.2184 ↑	\$11.9609 ⇌	↑	60	Jan 25	\$11.7775	-\$0.1975	16,670	47,891
Fri, May 24,	\$12.4800	\$0.0875	\$12.3095 ⇌	\$12.1946 ↑	\$11.9500 ⇌	↑	62	Mar 25	\$11.8025	-\$0.1650	12,029	72,434
Thu, May 23,	\$12.3925	-\$0.0700	\$12.2805 ⇌	\$12.1593 ↑	\$11.9359 ⇌	⇌	62	May 25	\$11.8425	-\$0.1525	2,891	20,500
Wed, May 22,	\$12.4625	\$0.1000	\$12.2498 ↑	\$12.1295 ↑	\$11.9242 ⇌	⇌	61	Jul 25	\$11.8950	-\$0.1500	1,480	10,428
Tue, May 21,	\$12.3625	-\$0.1175	\$12.2313 ⇌	\$12.0971 ⇌	\$11.9124 ⇌	↑	60	Aug 25	\$11.8350	-\$0.1475	22	1,138
% Pos. Closes /5	Mon	Tues	Wed	Thurs	Fri							
Prior 50 Days	60%	10%	50%	20%	70%							
						Sep 25	\$11.6150	-\$0.1500	12	185		
						Nov 25	\$11.5300	-\$0.1450	1,092	9,504		

Rolling 50 Day Chart



Contract Closes



/ 1 Prior prices may reflect different contracts when there is a transition to the status of "Active Contract".

/ 2 Indicators of the simple moving averages (10, 20, & 40 day) are horizontal unless the trend is statistically significant. (critical t value is 95 percentile)

/ 3 Proprietary indicator implying if the price trend is upward, downward or insignificant.

/ 4 Relative Streight Index (RSI) can indicate potential highs or lows of a trading range when the price trend is not significant. (RSI of 30 is low & 70 high)

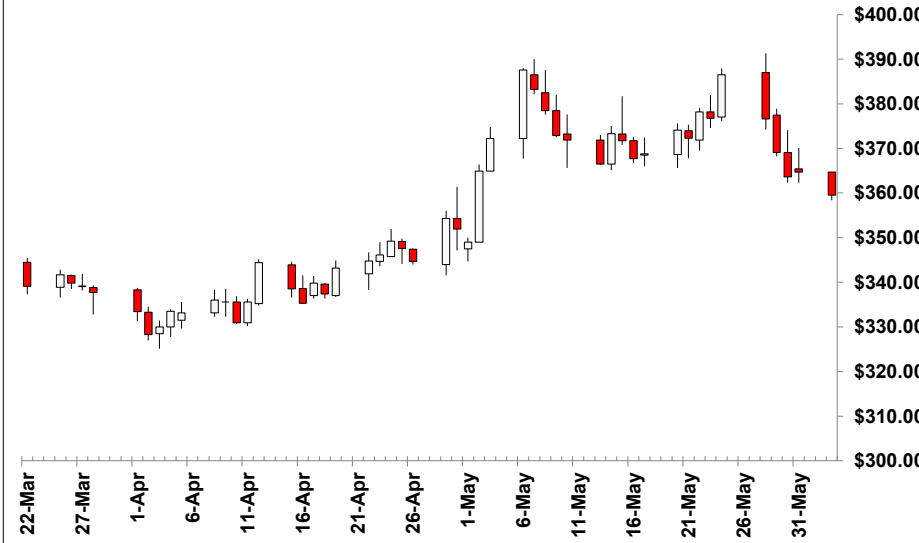
/ 5 Percentile of positive closes on particular weekdays. (prior 50 days)

SOYBEAN MEAL July 2024 - Active Contract - (\$/short ton)

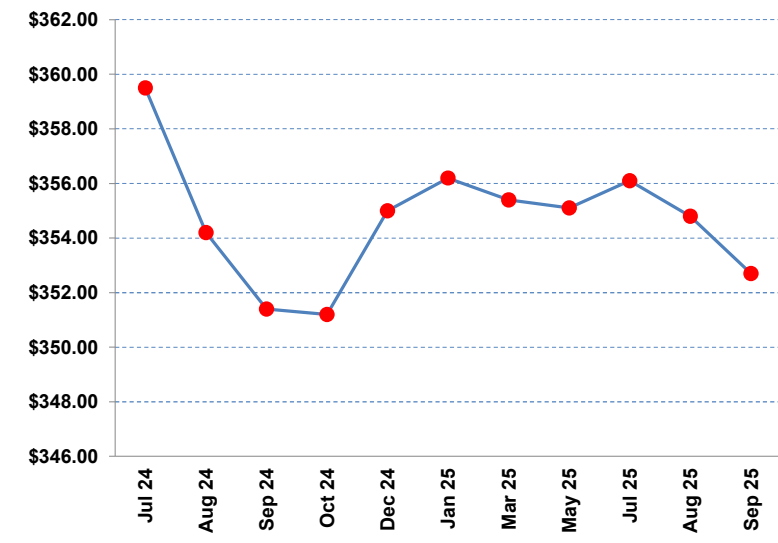
Monday, June 3, 2024

	Close /1	Change	10 MA /2	/2	20 MA /2	/2	40 MA /2	/2	/3	RSI /4	Contract	Close	Change	Volume	Open Interest
Mon, Jun 03,	\$359.50	-\$5.20	\$372.13	↔	\$373.17	↓	\$359.12	↔	↑	50	Jul 24	\$359.50	-\$5.20	59,308	197,930
Fri, May 31,	\$364.70	\$1.10	\$373.06	↔	\$373.81	↔	\$358.46	↔	↑	55	Aug 24	\$354.20	-\$3.80	24,523	51,193
Thu, May 30,	\$363.60	-\$5.50	\$373.36	↔	\$373.82	↔	\$357.68	↔	↑	57	Sep 24	\$351.40	-\$4.50	18,217	41,217
Wed, May 29,	\$369.10	-\$7.50	\$374.17	↔	\$373.09	↑	\$356.84	↑	↑	60	Oct 24	\$351.20	-\$4.50	9,864	24,933
Tue, May 28,	\$376.60	-\$9.90	\$374.59	↔	\$372.23	↑	\$355.82	↑	↔	61	Dec 24	\$355.00	-\$4.40	26,305	118,077
Fri, May 24,	\$386.50	\$9.80	\$373.58	↑	\$371.11	↑	\$354.74	↑	↔	62	Jan 25	\$356.20	-\$4.00	5,305	18,599
Thu, May 23,	\$376.70	-\$1.50	\$372.12	↔	\$369.02	↑	\$353.52	↑	↔	60	Mar 25	\$355.40	-\$3.40	2,443	20,259
Wed, May 22,	\$378.20	\$5.90	\$371.74	↔	\$367.57	↑	\$352.58	↑	↔	59	May 25	\$355.10	-\$3.10	937	6,458
Tue, May 21,	\$372.30	-\$1.80	\$371.77	↔	\$366.12	↔	\$351.62	↔	↑	59	Jul 25	\$356.10	-\$3.00	676	3,087
% Pos. Closes /5	Mon	Tues	Wed	Thurs	Fri										
Prior 50 Days	60%	20%	50%	30%	60%										
						Aug 25	\$354.80	-\$2.90	119	1,434	Sep 25	\$352.70	-\$3.00	218	506

Rolling 50 Day Chart



Contract Closes



/ 1 Prior prices may reflect different contracts when there is a transition to the status of "Active Contract".

/ 2 Indicators of the simple moving averages (10, 20, & 40 day) are horizontal unless the trend is statistically significant. (critical t value is 95 percentile)

/ 3 Proprietary indicator implying if the price trend is upward, downward or insignificant.

/ 4 Relative Strength Index (RSI) can indicate potential highs or lows of a trading range when the price trend is not significant. (RSI of 30 is low & 70 high)

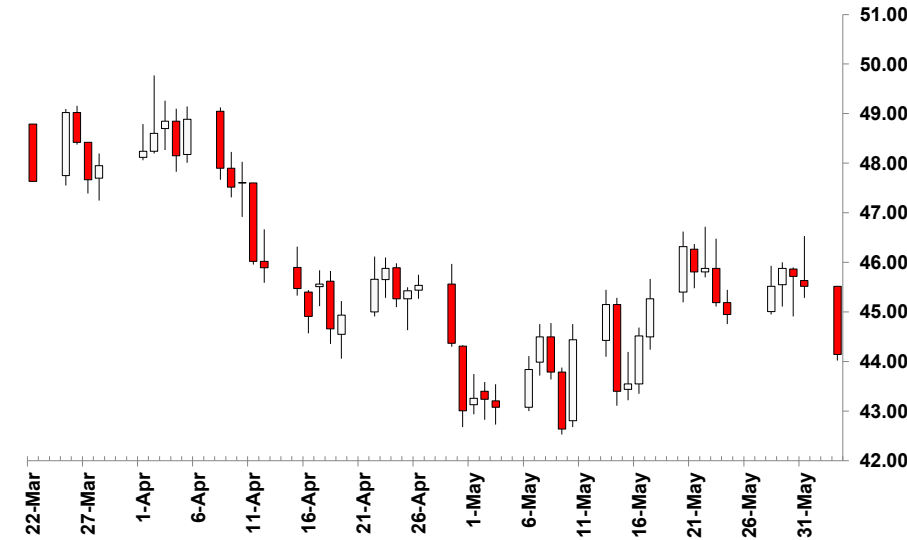
/ 5 Percentile of positive closes on particular weekdays. (prior 50 days)

SOYBEAN OIL July 2024 - Active Contract - (cents/lb)

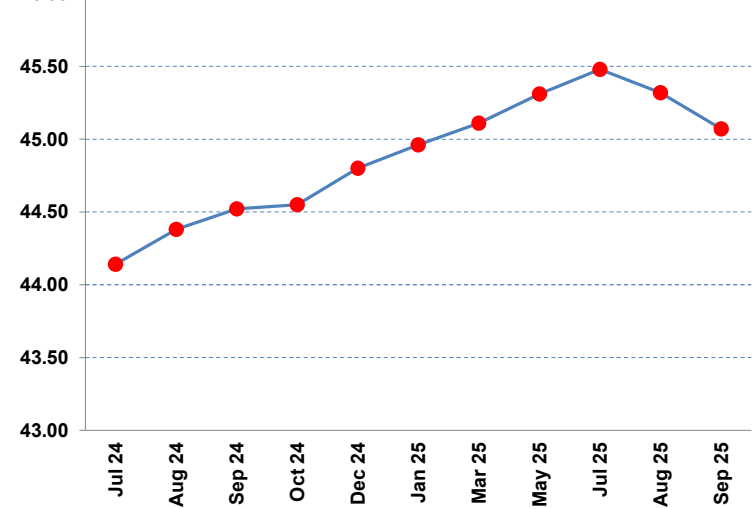
Monday, June 3, 2024

	Close /1	Change	10 MA /2	/2	20 MA /2	/2	40 MA /2	/2	/3	RSI /4	Contract	Close	Change	Volume	Open Interest
Mon, Jun 03,	44.14	-1.38	45.49	↓	44.80	↔	45.03	↓	↑	51	Jul 24	44.14	-1.38	75,613	218,763
Fri, May 31,	45.52	-0.20	45.61	↔	44.75	↑	45.15	↓	↔	53	Aug 24	44.38	-1.40	23,748	65,404
Thu, May 30,	45.72	-0.16	45.51	↑	44.63	↑	45.22	↔	↔	52	Sep 24	44.52	-1.35	7,400	41,576
Wed, May 29,	45.88	0.36	45.29	↑	44.51	↑	45.29	↔	↔	52	Oct 24	44.55	-1.31	4,349	28,530
Tue, May 28,	45.52	0.57	45.04	↔	44.37	↑	45.36	↔	↔	52	Dec 24	44.80	-1.26	23,956	146,799
Fri, May 24,	44.95	-0.24	45.00	↔	44.31	↔	45.43	↔	↔	53	Jan 25	44.96	-1.23	3,894	25,156
Thu, May 23,	45.19	-0.69	44.95	↔	44.34	↔	45.50	↔	↔	54	Mar 25	45.11	-1.20	2,777	22,894
Wed, May 22,	45.88	0.07	44.70	↑	44.35	↔	45.57	↔	↔	54	May 25	45.31	-1.18	665	7,907
Tue, May 21,	45.81	-0.51	44.49	↔	44.32	↔	45.63	↔	↔	51	Jul 25	45.48	-1.17	237	3,514
% Pos. Closes /5	Mon	Tues	Wed	Thurs	Fri	Aug 25	45.32	-1.17	58	1,170					
Prior 50 Days	60%	40%	60%	30%	50%	Sep 25	45.07	-1.17	12	713					

Rolling 50 Day Chart



Contract Closes



/ 1 Prior prices may reflect different contracts when there is a transition to the status of "Active Contract".

/ 2 Indicators of the simple moving averages (10, 20, & 40 day) are horizontal unless the trend is statistically significant. (critical t value is 95 percentile)

/ 3 Proprietary indicator implying if the price trend is upward, downward or insignificant.

/ 4 Relative Streight Index (RSI) can indicate potential highs or lows of a trading range when the price trend is not significant. (RSI of 30 is low & 70 high)

/ 5 Percentile of positive closes on particular weekdays. (prior 50 days)

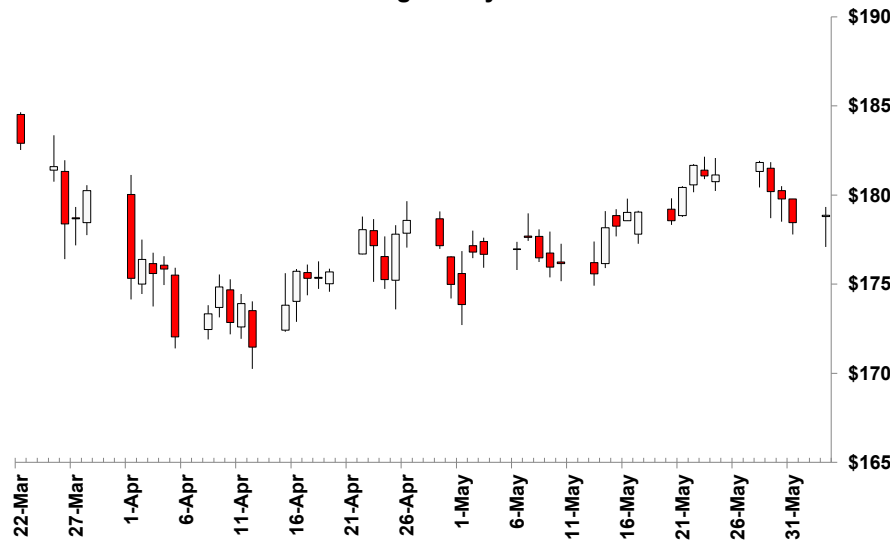


LIVE CATTLE August 2024 - Active Contract - (\$/cwt)

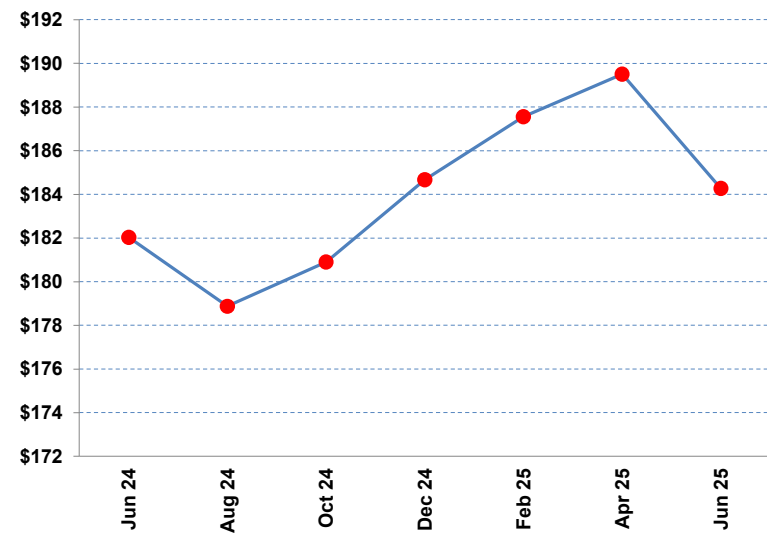
Monday, June 3, 2024

	Close /1	Change	10 MA /2	20 MA /2	40 MA /2	/3	RSI /4		Contract	Close	Change	Volume	Open Interest		
Mon, Jun 03,	\$178.875	\$0.425	\$180.198	↔	\$178.761	↔	\$177.10	↑	↑	54	Jun 24	\$182.03	\$0.475	10,163	29,091
Fri, May 31,	\$178.450	-\$1.325	\$180.215	↔	\$178.651	↔	\$176.93	↑	↑	56	Aug 24	\$178.88	\$0.425	23,963	128,787
Thu, May 30,	\$179.775	-\$0.425	\$180.273	↔	\$178.569	↔	\$176.86	↔	↑	59	Oct 24	\$180.90	\$0.100	9,551	58,617
Wed, May 29,	\$180.200	-\$1.625	\$180.120	↔	\$178.273	↑	\$176.76	↔	↑	61	Dec 24	\$184.68	\$0.025	7,132	39,758
Tue, May 28,	\$181.825	\$0.700	\$179.918	↑	\$178.011	↑	\$176.66	↑	↑	62	Feb 25	\$187.55	-\$0.025	2,462	15,769
Fri, May 24,	\$181.125	\$0.050	\$179.293	↑	\$177.778	↔	\$176.50	↑	↑	60	Apr 25	\$189.50	\$0.050	1,274	9,845
Thu, May 23,	\$181.075	-\$0.600	\$178.795	↑	\$177.650	↔	\$176.48	↔	↑	59	Jun 25	\$184.28	\$0.075	597	5,087
Wed, May 22,	\$181.675	\$1.250	\$178.283	↑	\$177.486	↑	\$176.42	↔	↑	58					
Tue, May 21,	\$180.425	\$1.875	\$177.763	↑	\$177.165	↑	\$176.33	↔	↑	56					
% Pos. Closes /5	Mon	Tues	Wed	Thurs	Fri										
Prior 50 Days	60%	60%	10%	50%	40%										

Rolling 50 Day Chart



Contract Closes



/ 1 Prior prices may reflect different contracts when there is a transition to the status of "Active Contract".

/ 2 Indicators of the simple moving averages (10, 20, & 40 day) are horizontal unless the trend is statistically significant. (critical t value is 95 percentile)

/ 3 Proprietary indicator implying if the price trend is upward, downward or insignificant.

/ 4 Relative Streight Index (RSI) can indicate potential highs or lows of a trading range when the price trend is not significant. (RSI of 30 is low & 70 high)

/ 5 Percentile of positive closes on particular weekdays. (prior 50 days)

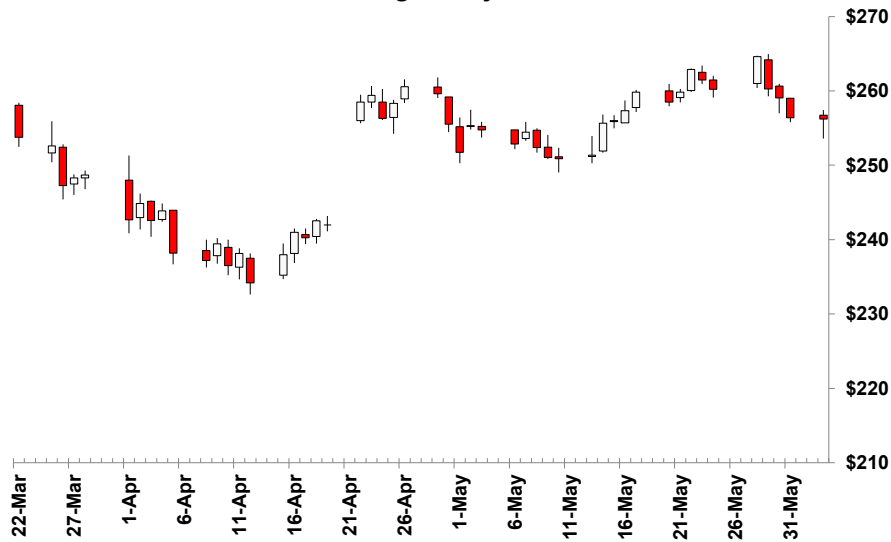


FEEDER CATTLE August 2024 - Active Contract - (\$/cwt)

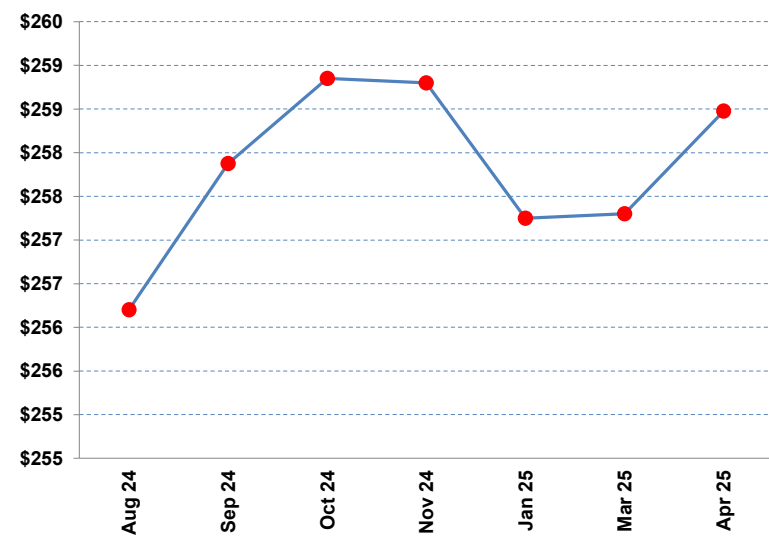
Monday, June 3, 2024

	Close /1	Change	10 MA /2	/2	20 MA /2	/2	40 MA /2	/2	/3	RSI /4	Contract	Close	Change	Volume	Open Interest
Mon, Jun 03,	\$256.200	-\$0.200	\$259.940	↔	\$257.058	↔	\$252.51	↑	↑	55	Aug 24	\$256.20	-\$0.200	8,122	23,182
Fri, May 31,	\$256.400	-\$2.675	\$260.305	↔	\$256.985	↔	\$252.06	↑	↑	57	Sep 24	\$257.88	-\$0.250	2,634	7,481
Thu, May 30,	\$259.075	-\$1.175	\$260.400	↔	\$256.926	↔	\$251.74	↔	↑	60	Oct 24	\$258.85	-\$0.125	2,131	7,799
Wed, May 29,	\$260.250	-\$4.350	\$260.080	↔	\$256.560	↔	\$251.33	↔	↑	62	Nov 24	\$258.80	-\$0.050	935	4,533
Tue, May 28,	\$264.600	\$4.375	\$259.623	↑	\$256.323	↑	\$250.95	↑	↑	63	Jan 25	\$257.25	\$0.200	552	3,073
Fri, May 24,	\$260.225	-\$1.225	\$258.298	↑	\$256.074	↔	\$250.40	↔	↑	62	Mar 25	\$257.30	\$0.400	250	995
Thu, May 23,	\$261.450	-\$1.450	\$257.365	↑	\$256.090	↔	\$250.11	↔	↑	62	Apr 25	\$258.48	\$0.550	87	301
Wed, May 22,	\$262.900	\$3.075	\$256.325	↑	\$255.933	↔	\$249.78	↔	↑	62					
Tue, May 21,	\$259.825	\$1.350	\$255.275	↔	\$255.603	↔	\$249.39	↔	↑	60					
% Pos. Closes /5	Mon	Tues	Wed	Thurs	Fri										
Prior 50 Days	40%	80%	20%	60%	30%										

Rolling 50 Day Chart



Contract Closes



/ 1 Prior prices may reflect different contracts when there is a transition to the status of "Active Contract".

/ 2 Indicators of the simple moving averages (10, 20, & 40 day) are horizontal unless the trend is statistically significant. (critical t value is 95 percentile)

/ 3 Proprietary indicator implying if the price trend is upward, downward or insignificant.

/ 4 Relative Streight Index (RSI) can indicate potential highs or lows of a trading range when the price trend is not significant. (RSI of 30 is low & 70 high)

/ 5 Percentile of positive closes on particular weekdays. (prior 50 days)

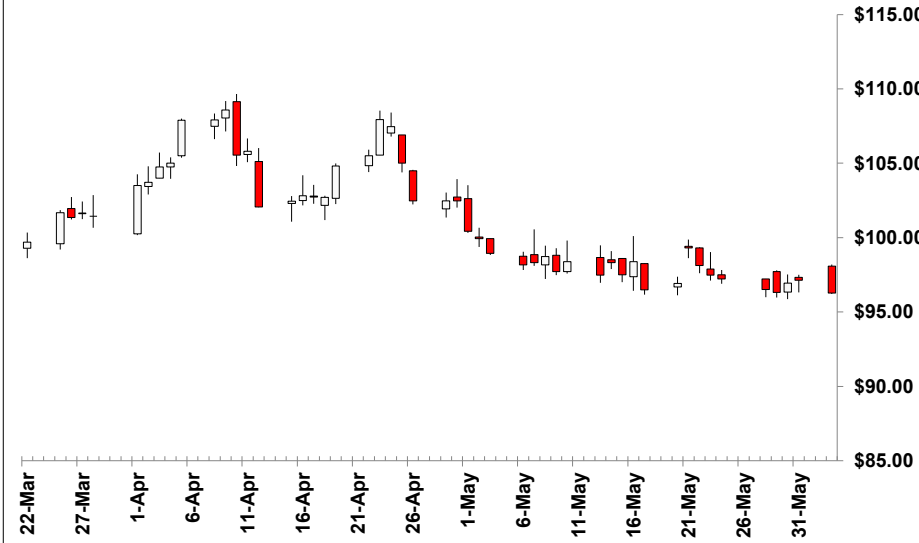


LEAN HOGS July 2024 - Active Contract - (\$/cwt)

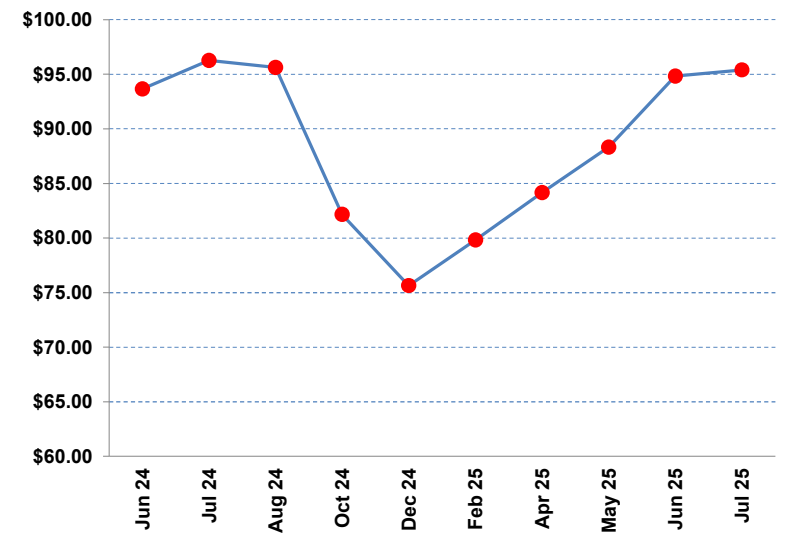
Monday, June 3, 2024

	Close /1	Change	10 MA /2	20 MA /2	40 MA /2	/3	RSI /4	Contract	Close	Change	Volume	Open Interest
Mon, Jun 03,	\$96.275	-\$0.850	\$97.228 ↔	\$97.589 ↓	\$100.75 ↓	↓	42	Jun 24	\$93.65	-\$0.700	7,257	21,437
Fri, May 31,	\$97.125	\$0.175	\$97.250 ↔	\$97.722 ↓	\$101.04 ↓	↓	42	Jul 24	\$96.28	-\$0.850	21,796	78,730
Thu, May 30,	\$96.950	\$0.625	\$97.375 ↔	\$97.862 ↓	\$101.23 ↓	↓	42	Aug 24	\$95.63	-\$0.875	11,136	59,970
Wed, May 29,	\$96.325	-\$0.200	\$97.430 ↔	\$98.036 ↓	\$101.43 ↓	↓	43	Oct 24	\$82.15	-\$0.750	6,047	57,118
Tue, May 28,	\$96.525	-\$0.700	\$97.630 ↔	\$98.344 ↓	\$101.61 ↔	↓	45	Dec 24	\$75.65	-\$0.875	4,594	40,590
Fri, May 24,	\$97.225	-\$0.250	\$97.725 ↔	\$98.641 ↓	\$101.79 ↔	↓	44	Feb 25	\$79.83	-\$0.775	1,670	14,609
Thu, May 23,	\$97.475	-\$0.650	\$97.840 ↔	\$98.904 ↓	\$101.89 ↔	↓	44	Apr 25	\$84.18	-\$0.700	906	5,688
Wed, May 22,	\$98.125	-\$1.200	\$97.865 ↔	\$99.280 ↓	\$102.00 ↔	↓	44	May 25	\$88.33	-\$0.625	2	134
Tue, May 21,	\$99.325	\$2.400	\$97.925 ↔	\$99.746 ↓	\$102.08 ↔	↓	43	Jun 25	\$94.83	-\$0.500	219	1,914
								Jul 25	\$95.40	-\$0.750	9	331
% Pos. Closes /5	Mon	Tues	Wed	Thurs	Fri							
Prior 50 Days	70%	40%	30%	50%	40%							

Rolling 50 Day Chart



Contract Closes



/ 1 Prior prices may reflect different contracts when there is a transition to the status of "Active Contract".

/ 2 Indicators of the simple moving averages (10, 20, & 40 day) are horizontal unless the trend is statistically significant. (critical t value is 95 percentile)

/ 3 Proprietary indicator implying if the price trend is upward, downward or insignificant.

/ 4 Relative Strength Index (RSI) can indicate potential highs or lows of a trading range when the price trend is not significant. (RSI of 30 is low & 70 high)

/ 5 Percentile of positive closes on particular weekdays. (prior 50 days)

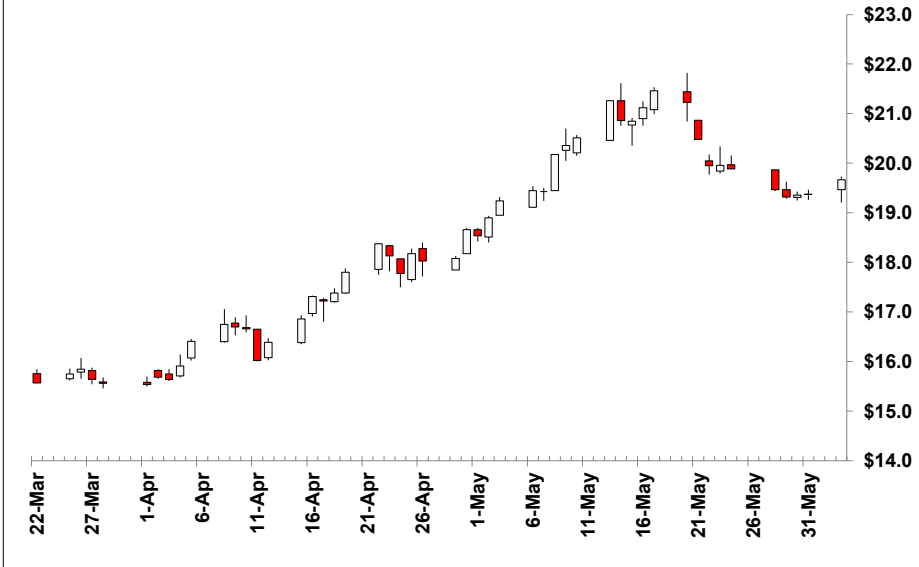


MILK CLASS III June 2024 - Active Contract - (\$/cwt)

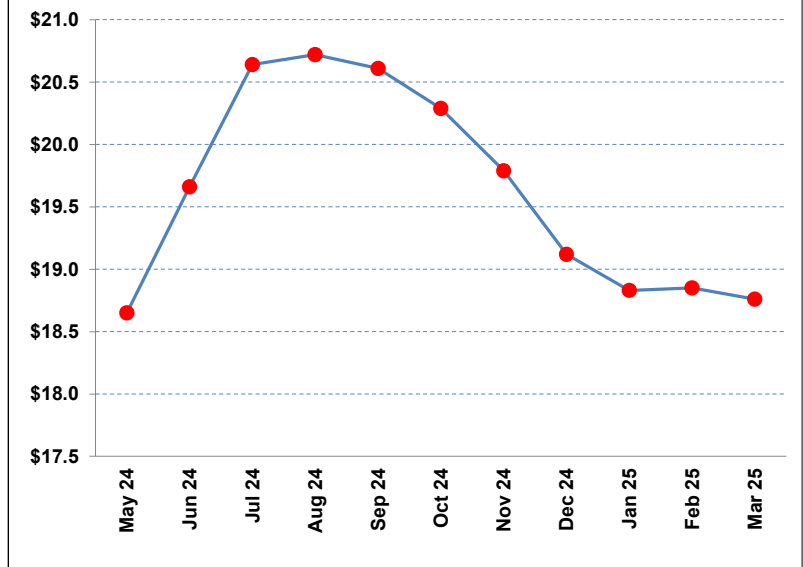
Monday, June 3, 2024

	Close /1	Change	10 MA /2	/2	20 MA /2	/2	40 MA /2	/2	/3	RSI /4	Contract	Close	Change	Volume	Open Interest
Mon, Jun 03,	\$19.67	\$0.29	\$19.87	↓	\$20.21	↔	\$18.93	↔	↔	49	May 24	\$18.65	\$0.04	82	4,343
Fri, May 31,	\$19.38	\$0.02	\$20.05	↓	\$20.19	↔	\$18.85	↔	↔	50	Jun 24	\$19.66	\$0.29	607	4,165
Thu, May 30,	\$19.36	\$0.04	\$20.22	↔	\$20.16	↔	\$18.76	↑	↔	51	Jul 24	\$20.64	\$0.34	705	4,854
Wed, May 29,	\$19.32	-\$0.15	\$20.37	↔	\$20.12	↔	\$18.67	↑	↔	53	Aug 24	\$20.72	\$0.30	191	2,473
Tue, May 28,	\$19.47	-\$0.42	\$20.53	↔	\$20.09	↔	\$18.58	↑	↑	56	Sep 24	\$20.61	\$0.28	112	1,866
Fri, May 24,	\$19.89	-\$0.07	\$20.71	↓	\$20.02	↔	\$18.48	↑	↑	61	Oct 24	\$20.29	\$0.21	78	1,431
Thu, May 23,	\$19.96	\$0.01	\$20.77	↔	\$19.93	↔	\$18.37	↑	↑	66	Nov 24	\$19.79	\$0.19	24	1,328
Wed, May 22,	\$19.95	-\$0.53	\$20.81	↔	\$19.84	↔	\$18.26	↑	↑	70	Dec 24	\$19.12	\$0.02	21	1,195
Tue, May 21,	\$20.48	-\$0.75	\$20.83	↔	\$19.73	↑	\$18.16	↑	↑	74	Jan 25	\$18.83	\$0.00	24	677
% Pos. Closes /5	Mon	Tues	Wed	Thurs	Fri										
Prior 50 Days	80%	30%	20%	80%	70%										
Feb 25	\$18.85	\$0.05	28	688											
Mar 25	\$18.76	-\$0.01	27	646											

Rolling 50 Day Chart



Contract Closes



/ 1 Prior prices may reflect different contracts when there is a transition to the status of "Active Contract".

/ 2 Indicators of the simple moving averages (10, 20, & 40 day) are horizontal unless the trend is statistically significant. (critical t value is 95 percentile)

/ 3 Proprietary indicator implying if the price trend is upward, downward or insignificant.

/ 4 Relative Streight Index (RSI) can indicate potential highs or lows of a trading range when the price trend is not significant. (RSI of 30 is low & 70 high)

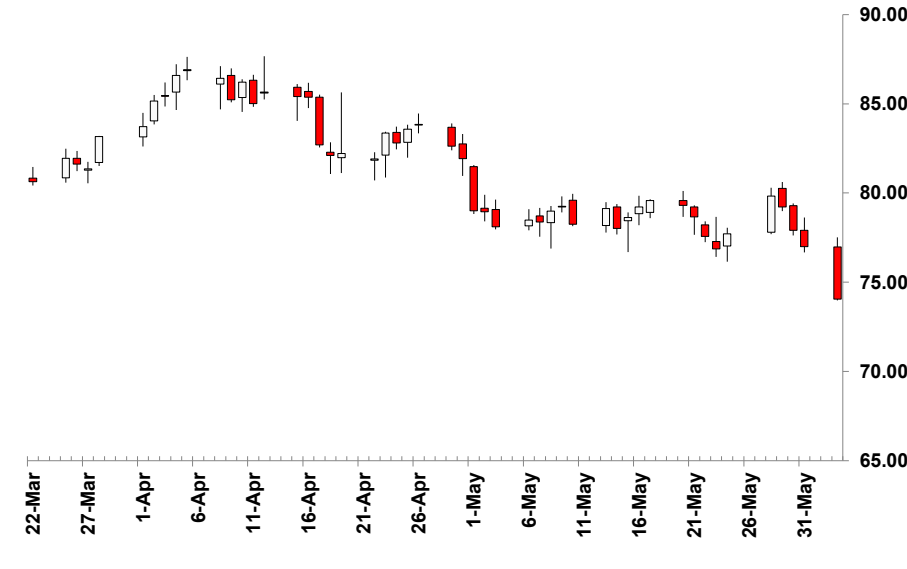
/ 5 Percentile of positive closes on particular weekdays. (prior 50 days)

CRUDE OIL July 2024 - Active Contract - (\$/barrel)

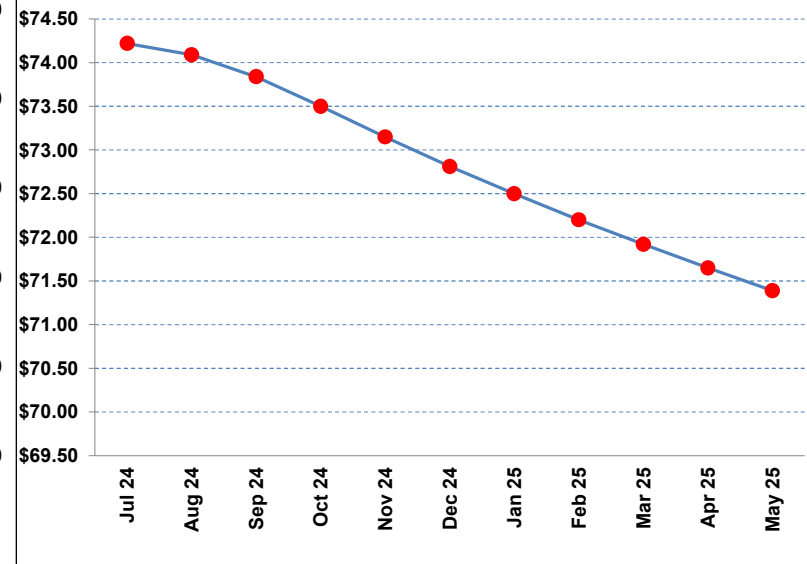
Monday, June 3, 2024

	Close /1	Change	10 MA /2	/2	20 MA /2	/2	40 MA /2	/2	/3	RSI /4	Contract	Close	Change	Volume	Open Interest
Mon, Jun 03,	\$74.05	-\$2.94	\$77.81	↓	\$78.30	↓	\$80.71	↓	↓	43	Jul 24	\$74.22	-\$2.94	345,120	361,691
Fri, May 31,	\$76.99	-\$0.92	\$78.37	↓	\$78.51	⇌	\$81.03	↓	↓	44	Aug 24	\$74.09	-\$2.80	157,562	241,489
Thu, May 30,	\$77.91	-\$1.32	\$78.59	⇌	\$78.61	⇌	\$81.27	↓	↓	43	Sep 24	\$73.84	-\$2.72	113,486	198,673
Wed, May 29,	\$79.23	-\$0.60	\$78.66	⇌	\$78.66	⇌	\$81.46	⇌	↓	42	Oct 24	\$73.50	-\$2.64	57,204	121,123
Tue, May 28,	\$79.83	\$2.11	\$78.54	⇌	\$78.79	⇌	\$81.61	⇌	↓	41	Nov 24	\$73.15	-\$2.58	33,757	53,336
Fri, May 24,	\$77.72	\$0.85	\$78.47	⇌	\$78.93	↓	\$81.71	⇌	↓	39	Dec 24	\$72.81	-\$2.50	90,494	182,767
Thu, May 23,	\$76.87	-\$0.70	\$78.52	⇌	\$79.24	↓	\$81.84	↓	↓	41	Jan 25	\$72.50	-\$2.41	13,612	49,112
Wed, May 22,	\$77.57	-\$1.09	\$78.76	↓	\$79.58	↓	\$81.96	⇌	⇌	42	Feb 25	\$72.20	-\$2.25	6,699	31,218
Tue, May 21,	\$78.66	-\$0.64	\$78.90	⇌	\$79.84	↓	\$82.06	⇌	⇌	43	Mar 25	\$71.92	-\$2.25	13,170	44,956
% Pos. Closes /5	Mon	Tues	Wed	Thurs	Fri	Apr 25	\$71.65	-\$2.11	2,057	27,269	May 25	\$71.39	-\$2.05	1,776	25,237
Prior 50 Days	60%	30%	40%	50%	60%										

Rolling 50 Day Chart



Contract Closes



/ 1 Prior prices may reflect different contracts when there is a transition to the status of "Active Contract".

/ 2 Indicators of the simple moving averages (10, 20, & 40 day) are horizontal unless the trend is statistically significant. (critical t value is 95 percentile)

/ 3 Proprietary indicator implying if the price trend is upward, downward or insignificant.

/ 4 Relative Streight Index (RSI) can indicate potential highs or lows of a trading range when the price trend is not significant. (RSI of 30 is low & 70 high)

/ 5 Percentile of positive closes on particular weekdays. (prior 50 days)

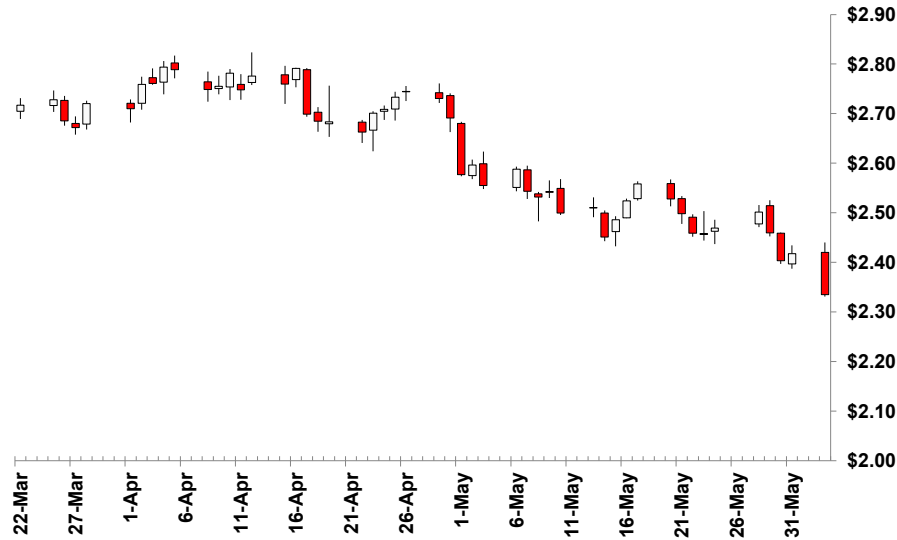


RBOB GASOLINE July 2024 - Active Contract - (\$/gal)

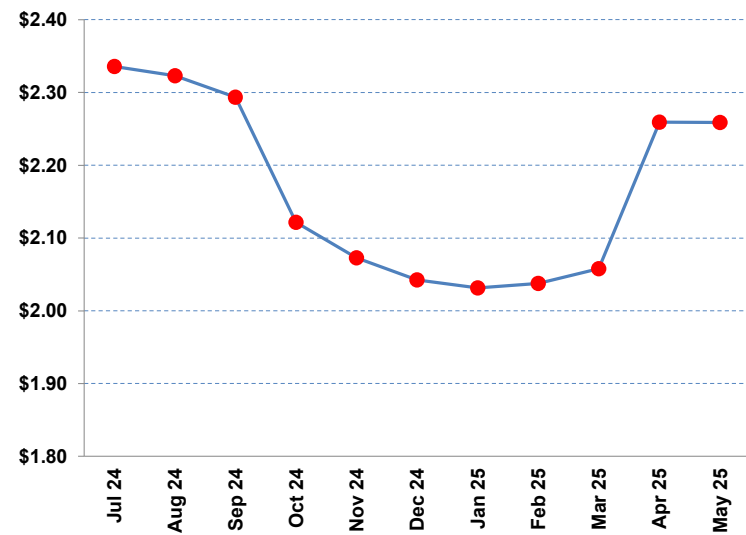
Monday, June 3, 2024

	Close /1	Change	10 MA /2	/2	20 MA /2	/2	40 MA /2	/2	/3	RSI /4	Contract	Close	Change	Volume	Open Interest
Mon, Jun 03,	\$2.3348	-\$0.0826	\$2.4528	↓	\$2.4882	↓	\$2.5973	↓	↓	36	Jul 24	\$2.3356	-\$0.0826	68,565	117,177
Fri, May 31,	\$2.4174	\$0.0139	\$2.4752	↓	\$2.4992	↓	\$2.6087	↓	↓	38	Aug 24	\$2.3229	-\$0.0778	44,428	63,764
Thu, May 30,	\$2.4035	-\$0.0564	\$2.4859	↓	\$2.5082	↓	\$2.6181	↓	↓	38	Sep 24	\$2.2933	-\$0.0744	21,887	66,012
Wed, May 29,	\$2.4599	-\$0.0419	\$2.4941	↔	\$2.5169	↓	\$2.6270	↓	↓	38	Oct 24	\$2.1216	-\$0.0722	7,230	31,716
Tue, May 28,	\$2.5018	\$0.0322	\$2.4933	↔	\$2.5284	↓	\$2.6345	↓	↓	38	Nov 24	\$2.0726	-\$0.0674	4,282	23,098
Fri, May 24,	\$2.4696	\$0.0131	\$2.4941	↔	\$2.5399	↓	\$2.6397	↓	↓	38	Dec 24	\$2.0423	-\$0.0651	4,689	31,380
Thu, May 23,	\$2.4565	-\$0.0022	\$2.4972	↔	\$2.5536	↓	\$2.6460	↓	↓	40	Jan 25	\$2.0313	-\$0.0572	1,193	14,098
Wed, May 22,	\$2.4587	-\$0.0395	\$2.5057	↓	\$2.5674	↓	\$2.6514	↔	↓	41	Feb 25	\$2.0377	-\$0.0540	732	3,708
Tue, May 21,	\$2.4982	-\$0.0297	\$2.5130	↔	\$2.5799	↓	\$2.6570	↔	↓	41	Mar 25	\$2.0578	-\$0.0521	367	7,940
% Pos. Closes /5	Mon	Tues	Wed	Thurs	Fri	Apr 25	\$2.2591	-\$0.0518	158	4,358					
Prior 50 Days	30%	50%	30%	50%	60%	May 25	\$2.2589	-\$0.0512	52	1,775					

Rolling 50 Day Chart



Contract Closes



/ 1 Prior prices may reflect different contracts when there is a transition to the status of "Active Contract".

/ 2 Indicators of the simple moving averages (10, 20, & 40 day) are horizontal unless the trend is statistically significant. (critical t value is 95 percentile)

/ 3 Proprietary indicator implying if the price trend is upward, downward or insignificant.

/ 4 Relative Strength Index (RSI) can indicate potential highs or lows of a trading range when the price trend is not significant. (RSI of 30 is low & 70 high)

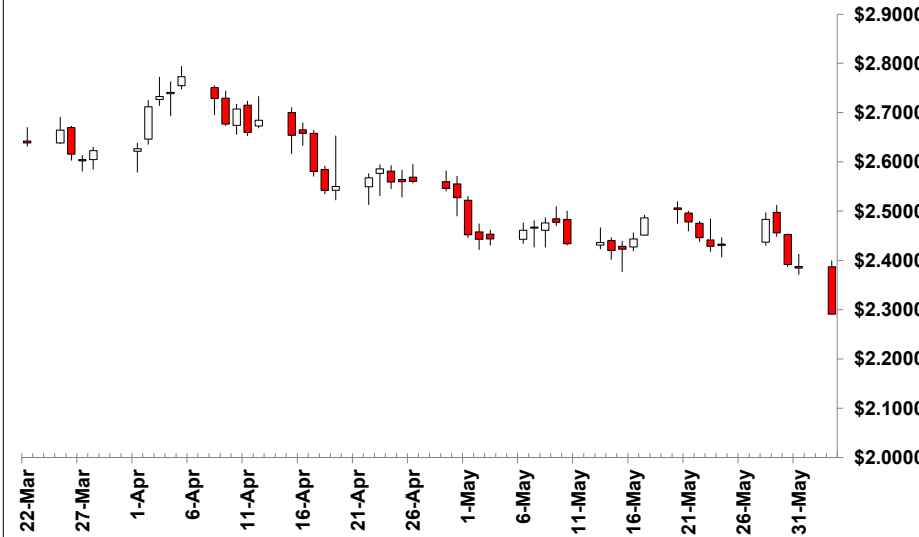
/ 5 Percentile of positive closes on particular weekdays. (prior 50 days)

NEW YORK HARBOR ULSD July 2024 - Active Contract - (\$/gal)

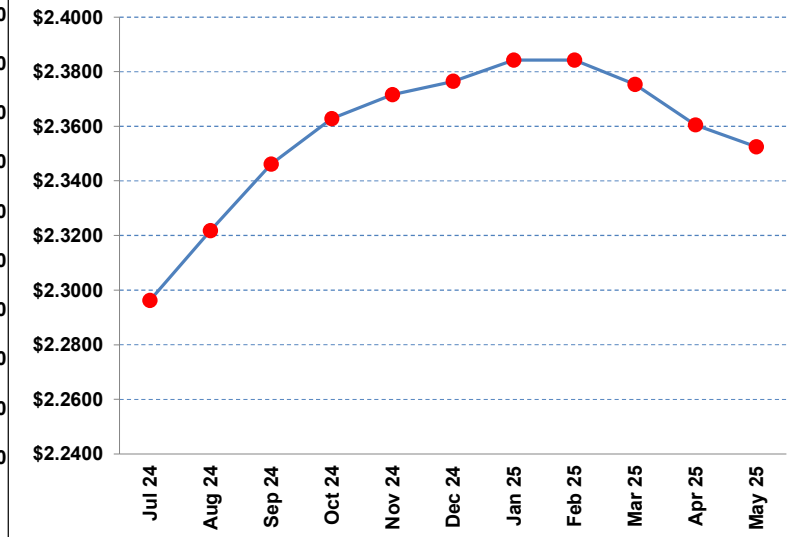
Monday, June 3, 2024

	Close /1	Change	10 MA /2	20 MA /2	40 MA /2	/3	RSI /4	Contract	Close	Change	Volume	Open Interest			
Mon, Jun 03,	\$2.2911	-\$0.0931	\$2.4294 ↓	\$2.4409 ↓	\$2.5127 ↓	↓	38	Jul 24	\$2.2962	-\$0.0931	57,315	102,972			
Fri, May 31,	\$2.3842	-\$0.0075	\$2.4489 ↓	\$2.4485 ⇌	\$2.5248 ↓	⇌	40	Aug 24	\$2.3218	-\$0.0873	31,900	43,559			
Thu, May 30,	\$2.3917	-\$0.0642	\$2.4548 ⇌	\$2.4515 ⇌	\$2.5337 ↓	⇌	41	Sep 24	\$2.3461	-\$0.0809	30,249	56,510			
Wed, May 29,	\$2.4559	-\$0.0274	\$2.4580 ⇌	\$2.4545 ⇌	\$2.5422 ↓	⇌	41	Oct 24	\$2.3628	-\$0.0769	17,608	30,399			
Tue, May 28,	\$2.4833	\$0.0525	\$2.4544 ⇌	\$2.4581 ⇌	\$2.5486 ↓	↓	41	Nov 24	\$2.3716	-\$0.0739	10,009	31,144			
Fri, May 24,	\$2.4308	\$0.0020	\$2.4497 ⇌	\$2.4612 ↓	\$2.5522 ⇌	↓	41	Dec 24	\$2.3765	-\$0.0701	15,772	44,196			
Thu, May 23,	\$2.4288	-\$0.0175	\$2.4501 ⇌	\$2.4677 ↓	\$2.5570 ⇌	↓	43	Jan 25	\$2.3843	-\$0.0670	3,535	17,185			
Wed, May 22,	\$2.4463	-\$0.0320	\$2.4550 ⇌	\$2.4743 ↓	\$2.5613 ⇌	↓	43	Feb 25	\$2.3843	-\$0.0615	2,097	7,311			
Tue, May 21,	\$2.4783	-\$0.0248	\$2.4579 ⇌	\$2.4800 ⇌	\$2.5656 ⇌	⇌	41	Mar 25	\$2.3754	-\$0.0620	3,519	12,934			
% Pos. Closes /5	Mon	Tues	Wed	Thurs	Fri										
Prior 50 Days	50%	30%	30%	30%	40%	Apr 25	\$2.3605	-\$0.0563	1,808	7,219	May 25	\$2.3525	-\$0.0542	1,663	4,949

Rolling 50 Day Chart



Contract Closes



/ 1 Prior prices may reflect different contracts when there is a transition to the status of "Active Contract".

/ 2 Indicators of the simple moving averages (10, 20, & 40 day) are horizontal unless the trend is statistically significant. (critical t value is 95 percentile)

/ 3 Proprietary indicator implying if the price trend is upward, downward or insignificant.

/ 4 Relative Streight Index (RSI) can indicate potential highs or lows of a trading range when the price trend is not significant. (RSI of 30 is low & 70 high)

/ 5 Percentile of positive closes on particular weekdays. (prior 50 days)

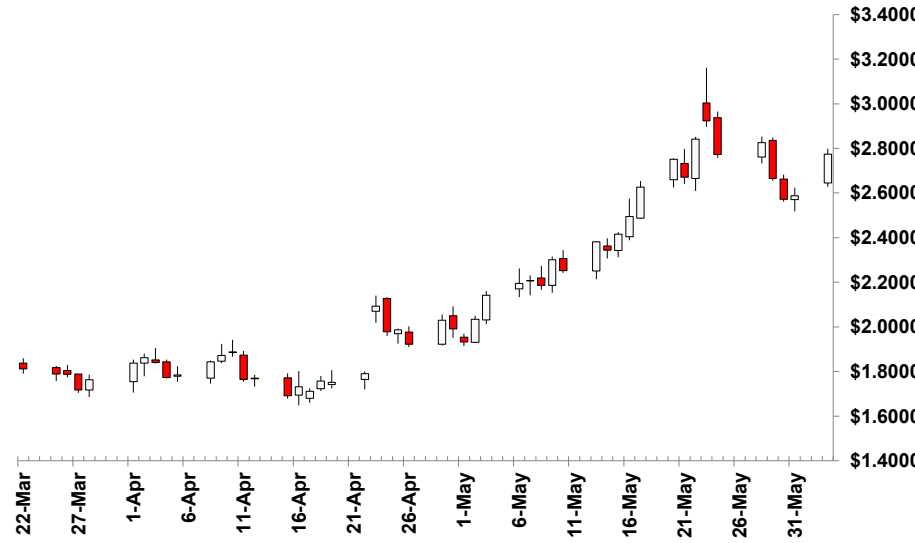


NATURAL GAS July 2024 - Active Contract - (\$/MMBtu)

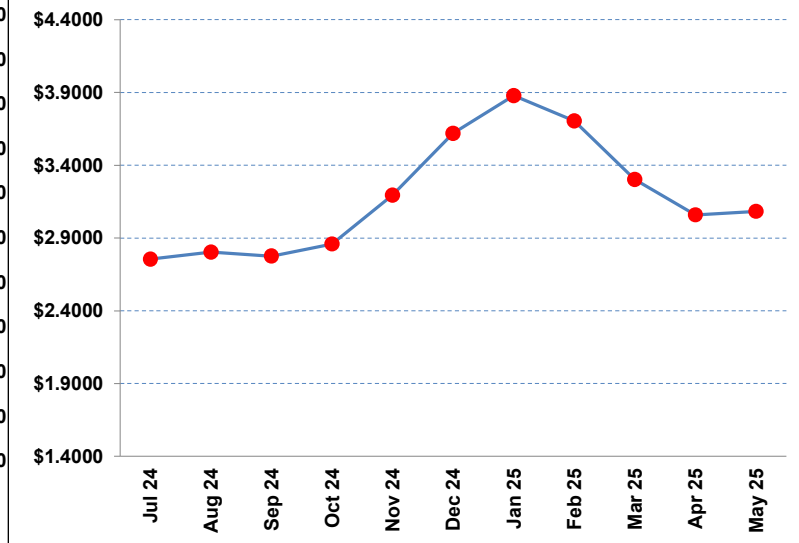
Monday, June 3, 2024

	Close /1	Change	10 MA /2	/2	20 MA /2	/2	40 MA /2	/2	/3	RSI /4		Contract	Close	Change	Volume	Open Interest
Mon, Jun 03,	\$2.774	\$0.187	\$2.738	↔	\$2.539	↑	\$2.212	↑	↑	62		Jul 24	\$2.756	\$0.187	139,119	294,594
Fri, May 31,	\$2.587	\$0.015	\$2.724	↔	\$2.508	↔	\$2.187	↑	↑	63		Aug 24	\$2.804	\$0.161	61,481	103,076
Thu, May 30,	\$2.572	-\$0.094	\$2.714	↔	\$2.480	↔	\$2.167	↑	↑	67		Sep 24	\$2.776	\$0.141	52,738	188,604
Wed, May 29,	\$2.666	-\$0.159	\$2.699	↔	\$2.448	↑	\$2.148	↑	↑	71		Oct 24	\$2.859	\$0.131	53,693	148,917
Tue, May 28,	\$2.825	\$0.052	\$2.667	↑	\$2.414	↑	\$2.128	↑	↑	73		Nov 24	\$3.194	\$0.091	29,592	100,960
Fri, May 24,	\$2.773	-\$0.150	\$2.622	↔	\$2.375	↑	\$2.104	↑	↑	75		Dec 24	\$3.620	\$0.062	19,041	73,760
Thu, May 23,	\$2.923	\$0.081	\$2.570	↑	\$2.332	↑	\$2.078	↑	↑	76		Jan 25	\$3.878	\$0.054	19,186	90,894
Wed, May 22,	\$2.842	\$0.171	\$2.508	↑	\$2.285	↑	\$2.048	↑	↑	75		Feb 25	\$3.704	\$0.051	4,718	42,077
Tue, May 21,	\$2.671	-\$0.080	\$2.442	↑	\$2.242	↑	\$2.022	↑	↑	74		Mar 25	\$3.303	\$0.057	12,463	86,758
% Pos. Closes /5	Mon	Tues	Wed	Thurs	Fri							Apr 25	\$3.059	\$0.044	8,993	67,372
Prior 50 Days	80%	60%	30%	60%	60%							May 25	\$3.083	\$0.028	5,070	34,062

Rolling 50 Day Chart



Contract Closes



/ 1 Prior prices may reflect different contracts when there is a transition to the status of "Active Contract".

/ 2 Indicators of the simple moving averages (10, 20, & 40 day) are horizontal unless the trend is statistically significant. (critical t value is 95 percentile)

/ 3 Proprietary indicator implying if the price trend is upward, downward or insignificant.

/ 4 Relative Strength Index (RSI) can indicate potential highs or lows of a trading range when the price trend is not significant. (RSI of 30 is low & 70 high)

/ 5 Percentile of positive closes on particular weekdays. (prior 50 days)

COTTON #2 July 2024 - Active Contract - (cents/lb)

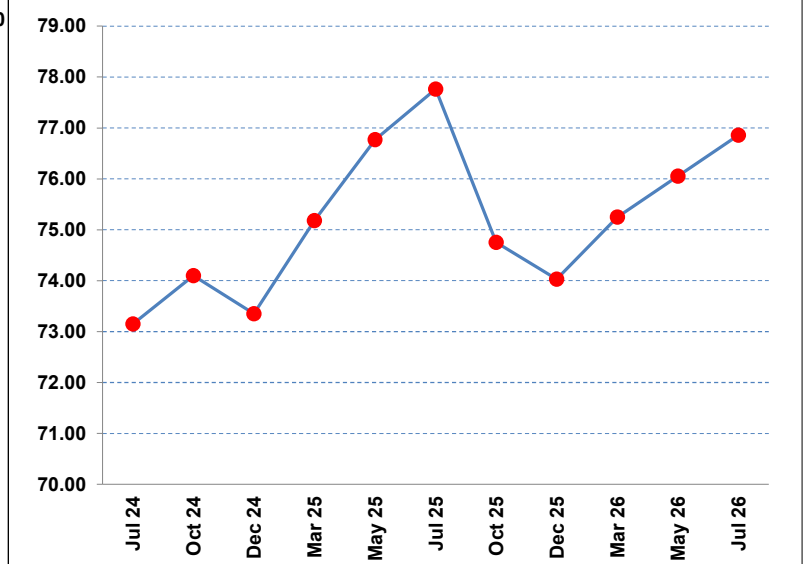
Monday, June 3, 2024

	Close /1	Change	10 MA /2	/2	20 MA /2	/2	40 MA /2	/2	/3	RSI /4	Contract	Close	Change	Volume	Open Interest
Mon, Jun 03,	73.15	-3.00	78.46	↔	77.75	↔	79.73	↓	↔	47	Jul 24	73.15	-3.00	33,071	89,516
Fri, May 31,	76.15	-1.61	78.74	↔	77.99	↔	80.06	↓	↔	50	Oct 24	74.10	-2.48	31	246
Thu, May 30,	77.76	-3.34	78.75	↔	77.97	↔	80.34	↓	↔	53	Dec 24	73.35	-1.76	30,216	104,461
Wed, May 29,	81.10	-1.33	78.51	↔	77.90	↔	80.62	↓	↔	54	Mar 25	75.18	-1.61	4,629	20,769
Tue, May 28,	82.43	1.91	77.86	↑	77.77	↔	80.86	↓	↓	51	May 25	76.77	-1.50	1,200	5,198
Fri, May 24,	80.52	-1.20	77.38	↔	77.73	↔	81.12	↓	↓	47	Jul 25	77.76	-1.33	402	3,461
Thu, May 23,	81.72	2.34	77.06	↔	77.74	↔	81.39	↓	↓	44	Oct 25	74.75	-1.15	0	0
Wed, May 22,	79.38	3.00	76.75	↔	77.71	↔	81.62	↓	↓	41	Dec 25	74.03	-0.80	1,251	6,117
Tue, May 21,	76.38	0.35	76.82	↓	77.79	↓	81.97	↓	↓	38	Mar 26	75.25	-0.72	0	127
% Pos. Closes /5	Mon	Tues	Wed	Thurs	Fri						May 26	76.05	-0.72	0	57
Prior 50 Days	80%	30%	30%	40%	20%						Jul 26	76.86	-0.72	0	39

Rolling 50 Day Chart



Contract Closes



/ 1 Prior prices may reflect different contracts when there is a transition to the status of "Active Contract".

/ 2 Indicators of the simple moving averages (10, 20, & 40 day) are horizontal unless the trend is statistically significant. (critical t value is 95 percentile)

/ 3 Proprietary indicator implying if the price trend is upward, downward or insignificant.

/ 4 Relative Strenght Index (RSI) can indicate potential highs or lows of a trading range when the price trend is not significant. (RSI of 30 is low & 70 high)

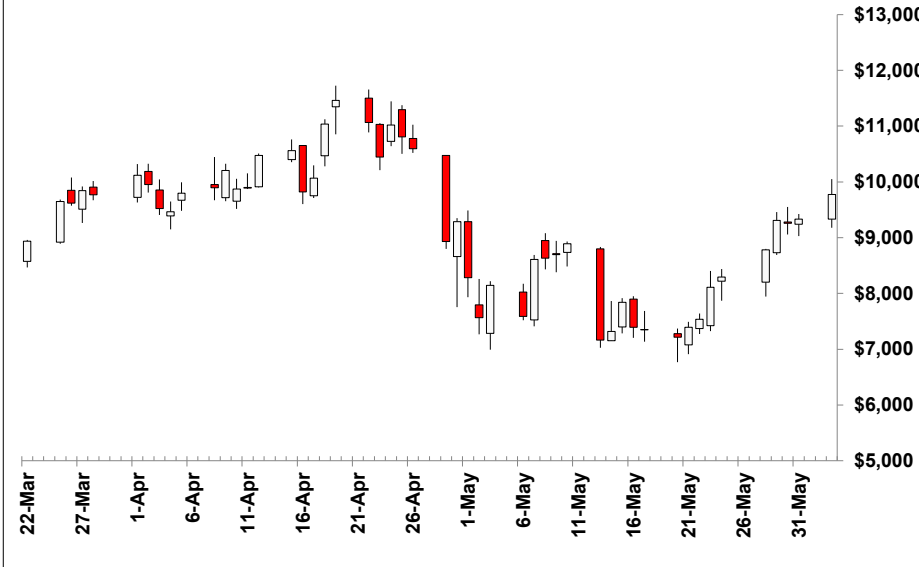
/ 5 Percentile of positive closes on particular weekdays. (prior 50 days)

COCOA July 2024 - Active Contract - (\$/MT)

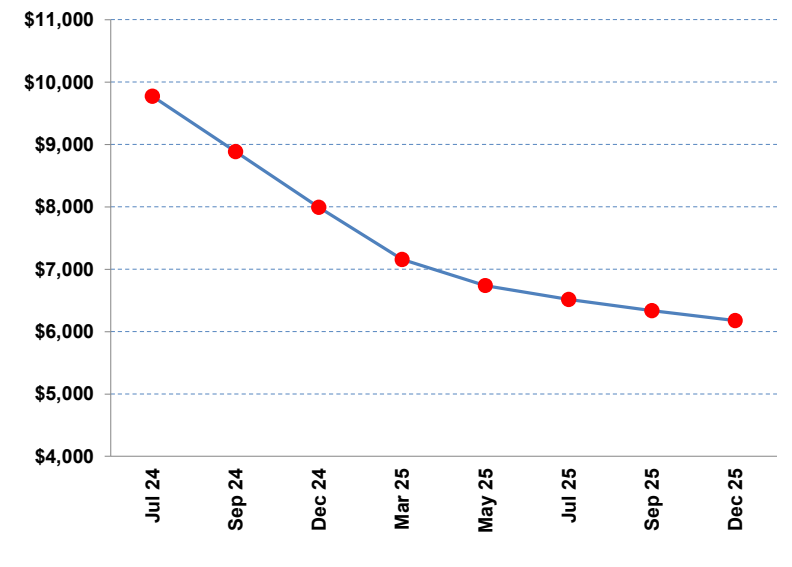
Monday, June 3, 2024

	Close /1	Change	10 MA /2	/2	20 MA /2	/2	40 MA /2	/2	/3	RSI /4	Contract	Close	Change	Volume	Open Interest
Mon, Jun 03,	\$9,775	\$444	\$8,500	↑	\$8,225	↑	\$9,097	↔	↔	58	Jul 24	\$9,775	\$444	17,665	44,084
Fri, May 31,	\$9,331	\$74	\$8,257	↑	\$8,143	↔	\$9,098	↔	↔	55	Sep 24	\$8,887	\$301	11,587	37,082
Thu, May 30,	\$9,257	-\$52	\$8,064	↑	\$8,055	↑	\$9,101	↔	↔	53	Dec 24	\$7,991	\$278	5,168	39,451
Wed, May 29,	\$9,309	\$529	\$7,922	↔	\$8,006	↔	\$9,108	↔	↓	50	Mar 25	\$7,155	\$252	2,344	18,614
Tue, May 28,	\$8,780	\$486	\$7,724	↑	\$8,005	↔	\$9,124	↔	↓	47	May 25	\$6,738	\$224	700	8,057
Fri, May 24,	\$8,294	\$185	\$7,562	↑	\$8,012	↔	\$9,157	↔	↓	44	Jul 25	\$6,515	\$193	400	5,842
Thu, May 23,	\$8,109	\$573	\$7,622	↔	\$8,127	↓	\$9,194	↔	↓	42	Sep 25	\$6,336	\$166	158	1,841
Wed, May 22,	\$7,536	\$142	\$7,680	↔	\$8,262	↓	\$9,238	↔	↓	41	Dec 25	\$6,177	\$152	28	1,452
Tue, May 21,	\$7,394	\$178	\$7,790	↔	\$8,436	↓	\$9,290	↔	↓	41					
% Pos. Closes /5	Mon	Tues	Wed	Thurs	Fri										
Prior 50 Days	40%	60%	70%	30%	80%										

Rolling 50 Day Chart



Contract Closes



/ 1 Prior prices may reflect different contracts when there is a transition to the status of "Active Contract".

/ 2 Indicators of the simple moving averages (10, 20, & 40 day) are horizontal unless the trend is statistically significant. (critical t value is 95 percentile)

/ 3 Proprietary indicator implying if the price trend is upward, downward or insignificant.

/ 4 Relative Strenght Index (RSI) can indicate potential highs or lows of a trading range when the price trend is not significant. (RSI of 30 is low & 70 high)

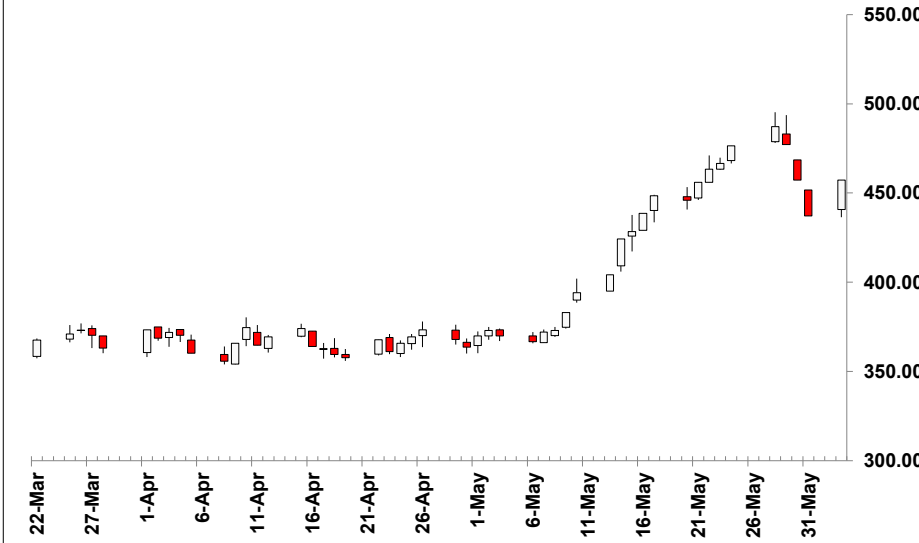
/ 5 Percentile of positive closes on particular weekdays. (prior 50 days)

ORANGE JUICE - A July 2024 - Active Contract - (cents/lb)

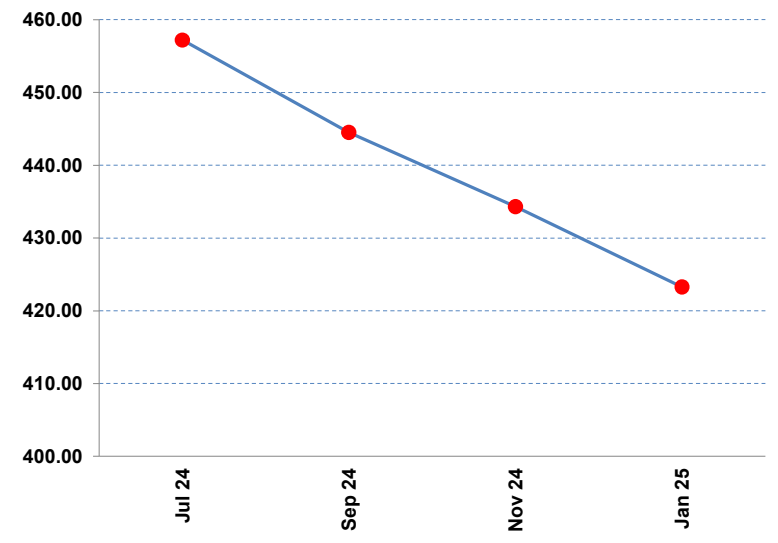
Monday, June 3, 2024

	Close /1	Change	10 MA /2	/2	20 MA /2	/2	40 MA /2	/2	/3	RSI /4	Contract	Close	Change	Volume	Open Interest
Mon, Jun 03,	457.20	20.00	462.43	↔	432.87	↑	399.70	↑	↑	69	Jul 24	457.20	20.00	644	8,566
Fri, May 31,	437.20	-20.00	461.56	↔	428.51	↔	397.28	↔	↑	74	Sep 24	444.50	19.50	285	2,364
Thu, May 30,	457.20	-20.00	461.69	↔	425.29	↔	395.61	↑	↑	80	Nov 24	434.30	18.85	47	483
Wed, May 29,	477.20	-10.00	458.82	↑	420.93	↑	393.47	↑	↑	83	Jan 25	423.30	18.85	1	73
Tue, May 28,	487.20	10.70	453.52	↑	415.25	↑	390.76	↑	↑	84					
Fri, May 24,	476.50	10.00	445.22	↑	409.29	↑	387.91	↑	↑	83					
Thu, May 23,	466.50	3.10	436.99	↑	404.13	↑	385.08	↑	↑	82					
Wed, May 22,	463.40	7.45	428.64	↑	399.28	↑	382.68	↑	↑	81					
Tue, May 21,	455.95	10.00	419.60	↑	394.40	↑	380.42	↑	↑	80					
% Pos. Closes /5	Mon	Tues	Wed	Thurs	Fri										
Prior 50 Days	60%	50%	80%	50%	60%										

Rolling 50 Day Chart



Contract Closes



/ 1 Prior prices may reflect different contracts when there is a transition to the status of "Active Contract".

/ 2 Indicators of the simple moving averages (10, 20, & 40 day) are horizontal unless the trend is statistically significant. (critical t value is 95 percentile)

/ 3 Proprietary indicator implying if the price trend is upward, downward or insignificant.

/ 4 Relative Strength Index (RSI) can indicate potential highs or lows of a trading range when the price trend is not significant. (RSI of 30 is low & 70 high)

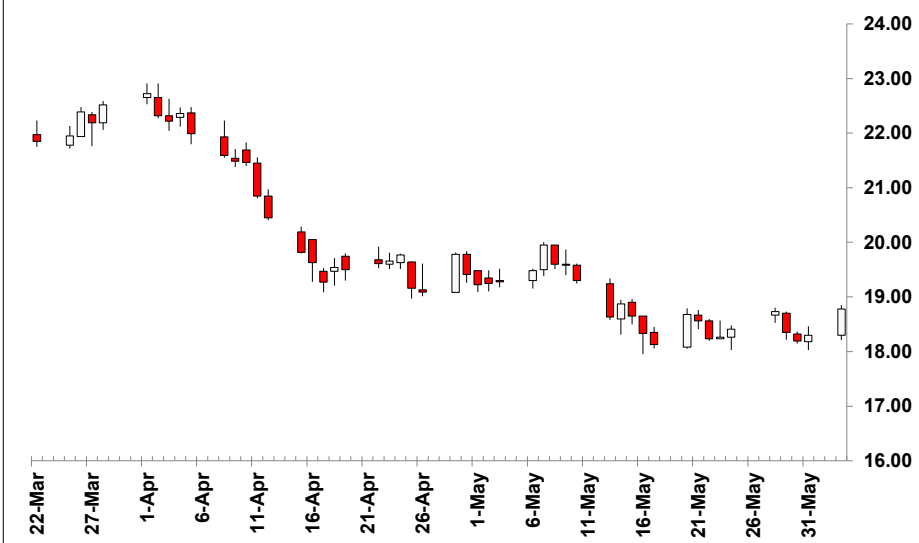
/ 5 Percentile of positive closes on particular weekdays. (prior 50 days)

SUGAR #11 WORLD July 2024 - Active Contract - (cents/lb)

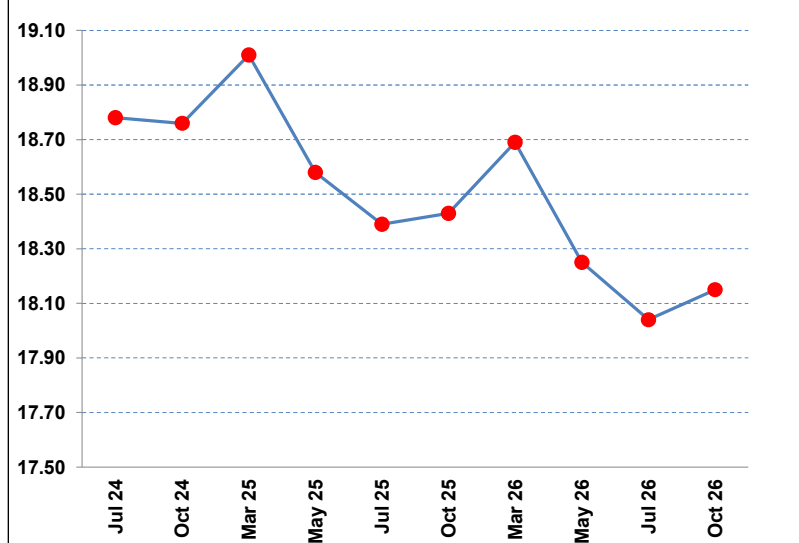
Monday, June 3, 2024

	Close /1	Change	10 MA /2	/2	20 MA /2	/2	40 MA /2	/2	/3	RSI /4	Contract	Close	Change	Volume	Open Interest
Mon, Jun 03,	18.78	0.48	18.45	↔	18.75	↔	19.32	↓	↓	41	Jul 24	18.78	0.48	62,892	341,537
Fri, May 31,	18.30	0.11	18.38	↔	18.78	↔	19.40	↓	↓	40	Oct 24	18.76	0.47	33,995	216,012
Thu, May 30,	18.19	-0.16	18.39	↔	18.82	↔	19.50	↓	↓	39	Mar 25	19.01	0.45	18,334	142,256
Wed, May 29,	18.35	-0.38	18.43	↔	18.87	↔	19.60	↓	↓	38	May 25	18.58	0.39	7,664	64,942
Tue, May 28,	18.73	0.32	18.49	↔	18.93	↔	19.70	↓	↓	38	Jul 25	18.39	0.34	5,484	50,281
Fri, May 24,	18.41	0.15	18.48	↔	18.98	↓	19.80	↓	↓	37	Oct 25	18.43	0.30	1,805	29,786
Thu, May 23,	18.26	0.03	18.56	↓	19.01	↔	19.91	↓	↓	36	Mar 26	18.69	0.28	763	15,036
Wed, May 22,	18.23	-0.33	18.70	↓	19.06	↔	20.00	↓	↓	35	May 26	18.25	0.24	419	5,981
Tue, May 21,	18.56	-0.12	18.83	↔	19.14	↓	20.11	↓	↓	35	Jul 26	18.04	0.21	409	6,731
% Pos. Closes /5	Mon	Tues	Wed	Thurs	Fri										
Prior 50 Days	60%	50%	10%	40%	20%										

Rolling 50 Day Chart



Contract Closes



/ 1 Prior prices may reflect different contracts when there is a transition to the status of "Active Contract".

/ 2 Indicators of the simple moving averages (10, 20, & 40 day) are horizontal unless the trend is statistically significant. (critical t value is 95 percentile)

/ 3 Proprietary indicator implying if the price trend is upward, downward or insignificant.

/ 4 Relative Strenght Index (RSI) can indicate potential highs or lows of a trading range when the price trend is not significant. (RSI of 30 is low & 70 high)

/ 5 Percentile of positive closes on particular weekdays. (prior 50 days)

COFFEE July 2024 - Active Contract - (cents/lb)

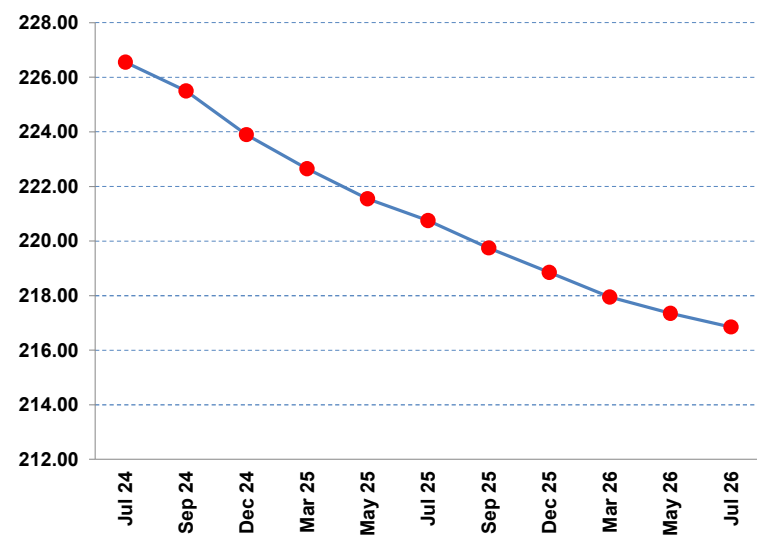
Monday, June 3, 2024

	Close /1	Change	10 MA /2	/2	20 MA /2	/2	40 MA /2	/2	/3	RSI /4	Contract	Close	Change	Volume	Open Interest
Mon, Jun 03,	226.55	4.20	222.06	↑	210.67	↑	216.00	↔	↔	63	Jul 24	226.55	4.20	18,580	88,373
Fri, May 31,	222.35	-10.65	220.06	↔	209.38	↔	215.64	↔	↔	63	Sep 24	225.50	4.25	13,755	79,801
Thu, May 30,	233.00	3.55	217.62	↑	208.57	↑	215.25	↑	↔	63	Dec 24	223.90	4.10	5,446	43,040
Wed, May 29,	229.45	-1.50	214.26	↑	207.72	↔	214.52	↑	↔	62	Mar 25	222.65	4.10	2,958	18,551
Tue, May 28,	230.95	12.70	211.40	↑	207.08	↔	213.73	↑	↔	60	May 25	221.55	4.10	887	5,223
Fri, May 24,	218.25	2.60	207.91	↑	206.90	↔	212.75	↑	↔	57	Jul 25	220.75	4.00	250	2,727
Thu, May 23,	215.65	-4.80	206.20	↔	207.19	↔	212.01	↑	↔	56	Sep 25	219.75	3.90	78	2,898
Wed, May 22,	220.45	3.25	204.78	↑	207.81	↔	211.39	↑	↔	53	Dec 25	218.85	3.70	42	4,258
Tue, May 21,	217.20	10.50	202.49	↑	208.09	↔	210.58	↑	↓	49	Mar 26	217.95	3.60	8	460
% Pos. Closes /5	Mon	Tues	Wed	Thurs	Fri										
Prior 50 Days	60%	70%	90%	50%	50%										

Rolling 50 Day Chart



Contract Closes



/ 1 Prior prices may reflect different contracts when there is a transition to the status of "Active Contract".

/ 2 Indicators of the simple moving averages (10, 20, & 40 day) are horizontal unless the trend is statistically significant. (critical t value is 95 percentile)

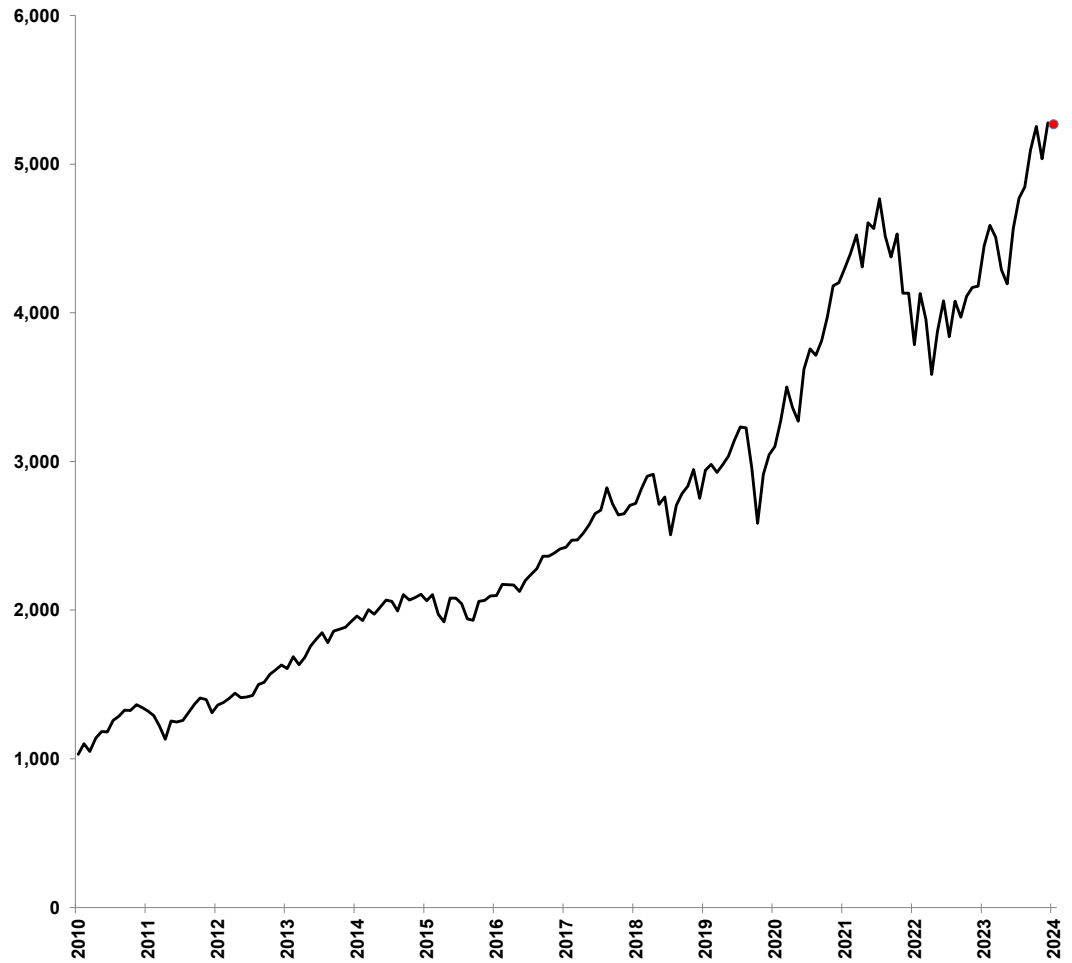
/ 3 Proprietary indicator implying if the price trend is upward, downward or insignificant.

/ 4 Relative Strength Index (RSI) can indicate potential highs or lows of a trading range when the price trend is not significant. (RSI of 30 is low & 70 high)

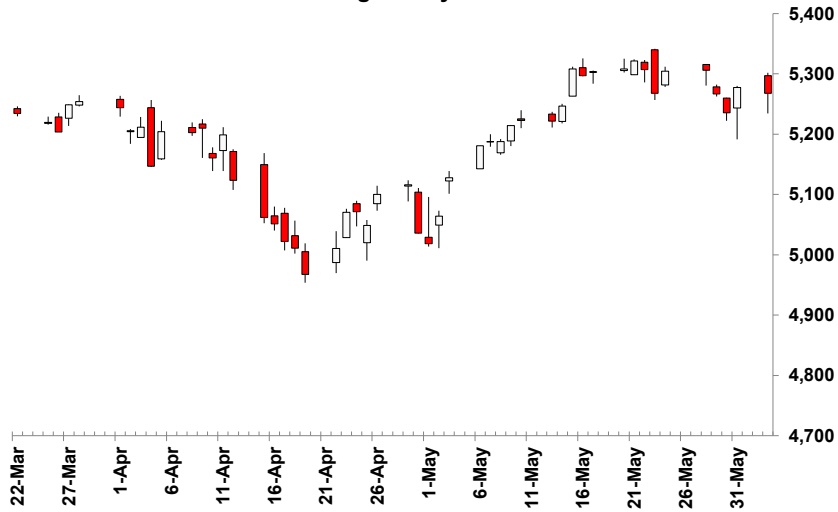
/ 5 Percentile of positive closes on particular weekdays. (prior 50 days)

	Close /1	Change	10 MA /2	/2	20 MA /2	/2	40 MA /2	/2	/3	RSI /4
Mon, Jun 03,	5,268	-9	5,286	↔	5,262	↔	5,173	↔	↑	57
Fri, May 31,	5,278	42	5,290	↔	5,255	↑	5,171	↔	↑	58
Thu, May 30,	5,235	-31	5,292	↓	5,244	↑	5,168	↔	↑	59
Wed, May 29,	5,267	-39	5,299	↓	5,233	↑	5,167	↔	↑	62
Tue, May 28,	5,306	1	5,297	↑	5,222	↑	5,166	↔	↑	65
Fri, May 24,	5,305	37	5,289	↑	5,212	↔	5,164	↔	↑	65
Thu, May 23,	5,268	-39	5,280	↔	5,202	↔	5,163	↔	↑	66
Wed, May 22,	5,307	-14	5,275	↔	5,191	↑	5,162	↔	↑	68
Tue, May 21,	5,321	13	5,263	↑	5,179	↑	5,160	↔	↑	69
% Pos. Closes /5	Mon	Tues	Wed	Thurs	Fri					
Prior 50 Days	40%	50%	40%	50%	60%					

Rolling 15 Year Chart: Month Ending Prices



Rolling 50 Day Chart



/1 Prior prices may reflect different contracts when there is a transition to the status of "Active Contract".

/2 Indicators of the simple moving averages (10, 20, & 40 day) are horizontal unless the trend is statistically significant. (critical t value is 95 percentile)

/3 Proprietary indicator implying if the price trend is upward, downward or insignificant.

/4 Relative Strenght Index (RSI) can indicate potential highs or lows of a trading range when the price trend is not significant. (RSI of 30 is low & 70 high)

/5 Percentile of positive closes on particular weekdays. (prior 50 days)

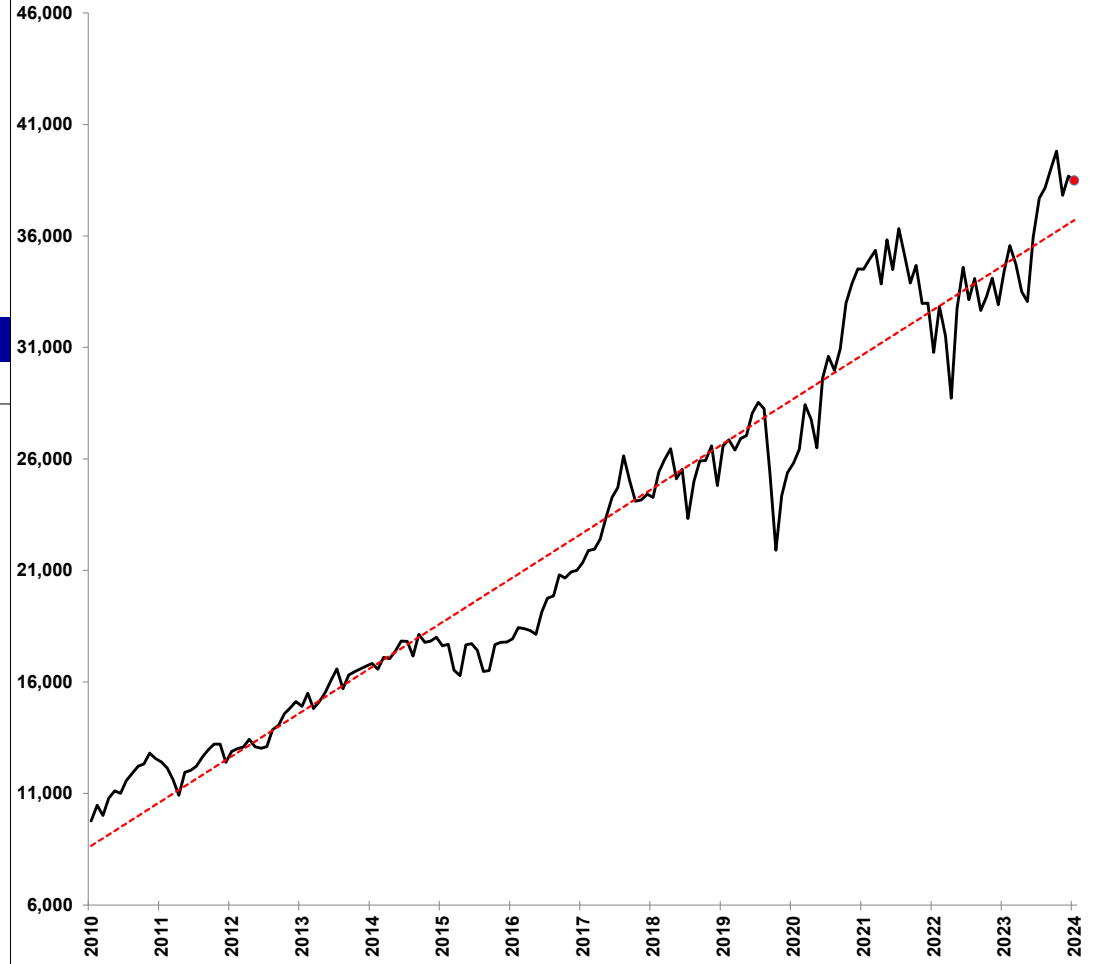


DOW JONES 30 INDUSTRIALS

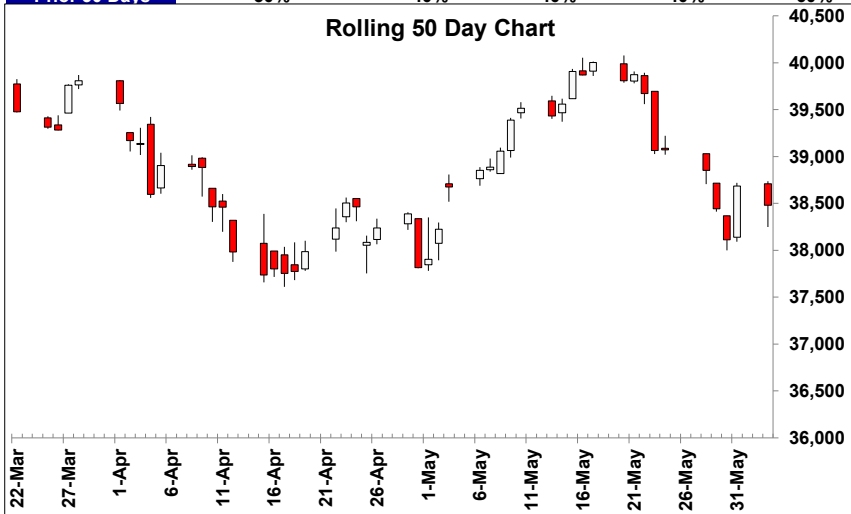
Monday, June 3, 2024

	Close /1	Change	10 MA /2	/2	20 MA /2	/2	40 MA /2	/2	/3	RSI /4
Mon, Jun 03,	38,480	-206	39,006	↔	39,226	↔	38,720	↔	↔	41
Fri, May 31,	38,686	575	39,158	↔	39,236	↔	38,730	↔	↔	43
Thu, May 30,	38,111	-330	39,276	↓	39,213	↔	38,728	↔	↔	43
Wed, May 29,	38,442	-411	39,456	↓	39,202	↔	38,753	↔	↑	48
Tue, May 28,	38,853	-217	39,568	↔	39,171	↔	38,772	↔	↑	54
Fri, May 24,	39,070	4	39,626	↔	39,148	↔	38,790	↔	↑	58
Thu, May 23,	39,065	-606	39,670	↔	39,106	↔	38,808	↔	↑	62
Wed, May 22,	39,671	-202	39,702	↔	39,057	↑	38,825	↔	↑	66
Tue, May 21,	39,873	66	39,641	↑	38,997	↔	38,816	↔	↑	68
% Pos. Closes /5	Mon	Tues	Wed	Thurs	Fri					
Prior 50 Days	30%	40%	40%	40%	60%					

Rolling 15 Year Chart: Month Ending Prices



Rolling 50 Day Chart



/1 Prior prices may reflect different contracts when there is a transition to the status of "Active Contract".

/2 Indicators of the simple moving averages (10, 20, & 40 day) are horizontal unless the trend is statistically significant. (critical t value is 95 percentile)

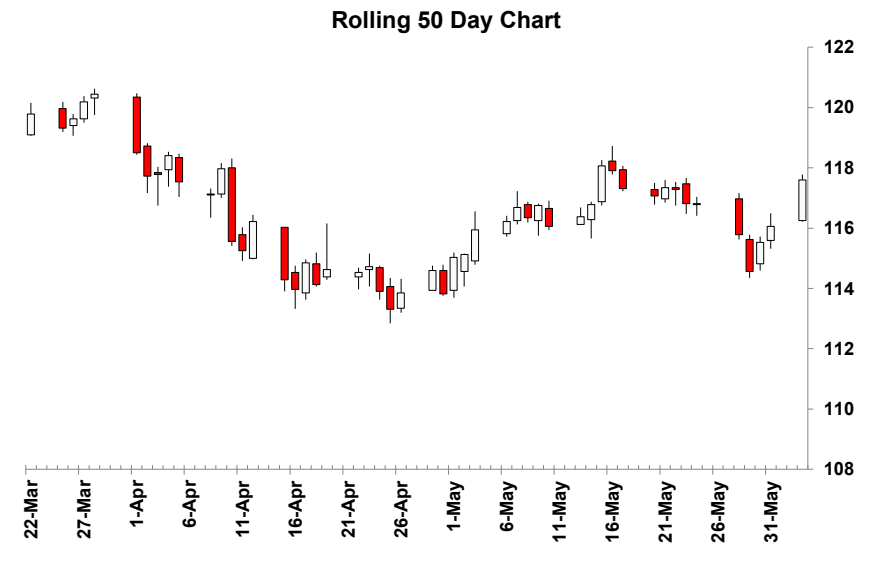
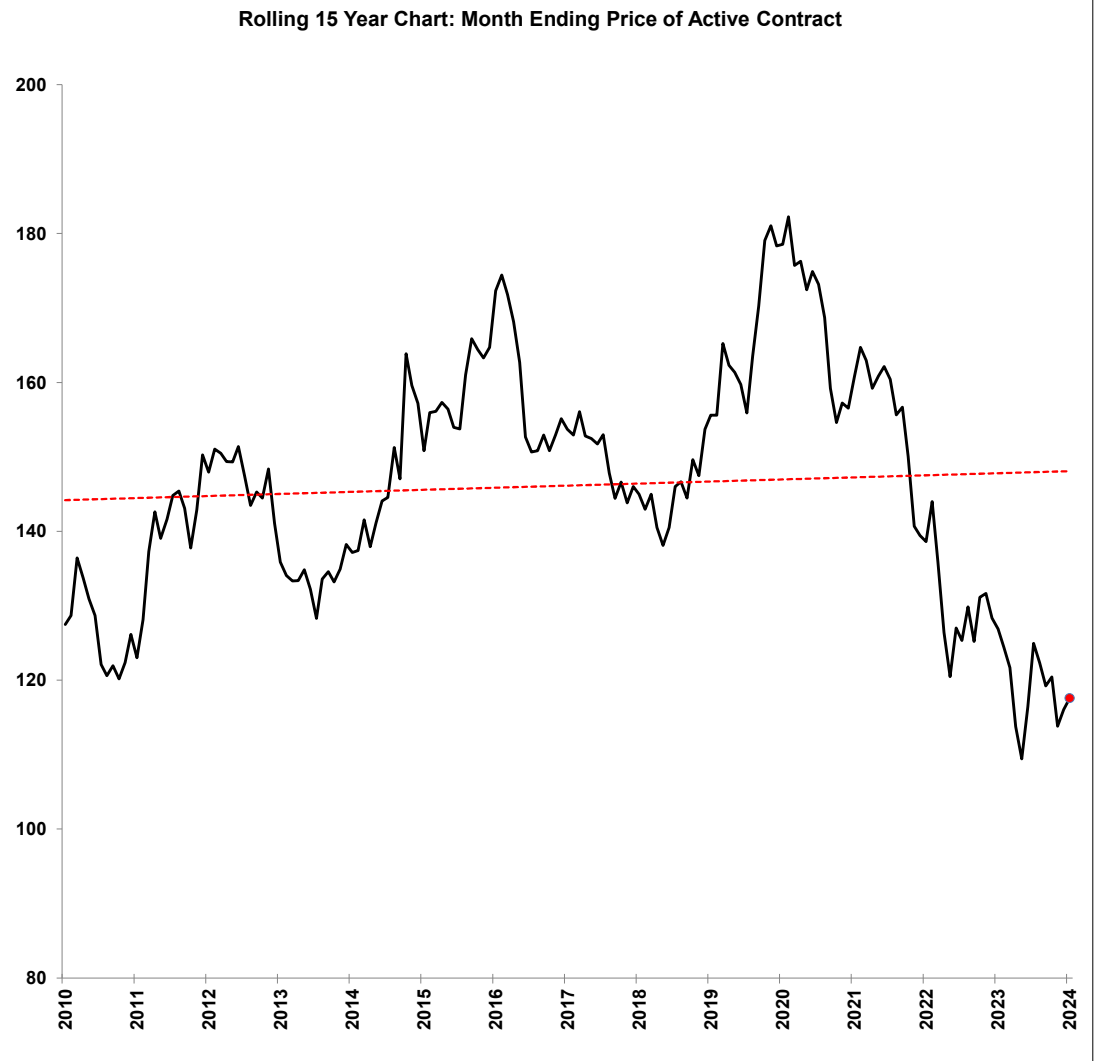
/3 Proprietary indicator implying if the price trend is upward, downward or insignificant.

/4 Relative Strength Index (RSI) can indicate potential highs or lows of a trading range when the price trend is not significant. (RSI of 30 is low & 70 high)

/5 Percentile of positive closes on particular weekdays. (prior 50 days)

	Close /1	Change	10 MA /2	20 MA /2	40 MA /2	/3	RSI /4		
Mon, Jun 03,	117 19/32	1 17/32	116 16/32	↔	116 21/32	↔	115 26/32	↔	46
Fri, May 31,	116 2/32	17/32	116 15/32	↔	116 19/32	↔	115 26/32	↔	45
Thu, May 30,	115 17/32	31/32	116 21/32	↓	116 17/32	↔	115 28/32	↓	46
Wed, May 29,	114 18/32	-1 7/32	116 29/32	↓	116 16/32	↔	115 29/32	↓	48
Tue, May 28,	115 25/32	-1 1/32	117 4/32	↔	116 15/32	↔	116	↔	52
Fri, May 24,	116 26/32	0	117 6/32	↔	116 13/32	↔	116 2/32	↔	54
Thu, May 23,	116 26/32	- 15/32	117 3/32	↔	116 9/32	↑	116 5/32	↓	55
Wed, May 22,	117 9/32	- 2/32	117 3/32	↔	116 3/32	↑	116 8/32	↔	56
Tue, May 21,	117 11/32	9/32	117	↔	115 30/32	↑	116 10/32	↔	58

% Pos. Closes /5	Mon	Tues	Wed	Thurs	Fri
Prior 50 Days	60%	60%	40%	50%	70%



/ 1 Prior prices may reflect different contracts when there is a transition to the status of "Active Contract".

/ 2 Indicators of the simple moving averages (10, 20, & 40 day) are horizontal unless the trend is statistically significant. (critical t value is 95 percentile)

/ 3 Proprietary indicator implying if the price trend is upward, downward or insignificant.

/ 4 Relative Strength Index (RSI) can indicate potential highs or lows of a trading range when the price trend is not significant. (RSI of 30 is low & 70 high)

/ 5 Percentile of positive closes on particular weekdays. (prior 50 days)

	Close /1	Change	10 MA /2	/2	20 MA /2	/2	40 MA /2	/2	/3	RSI /4
Mon, Jun 03,	\$2,366	\$20	\$2,370	↔	\$2,365	↔	\$2,360	↔	↔	50
Fri, May 31,	\$2,346	-\$21	\$2,376	↓	\$2,362	↔	\$2,360	↔	↑	49
Thu, May 30,	\$2,367	\$25	\$2,380	↔	\$2,360	↔	\$2,359	↔	↑	49
Wed, May 29,	\$2,341	-\$15	\$2,382	↔	\$2,357	↔	\$2,357	↔	↑	48
Tue, May 28,	\$2,357	#VALUE!	\$2,384	↔	\$2,356	↔	\$2,356	↔	↑	50
Mon, May 27,	---	#VALUE!	\$2,383	↑↑	\$2,356	↑↑	\$2,353	↑↑	↑	53
Fri, May 24,	\$2,335	-\$3	\$2,383	↔	\$2,356	↔	\$2,353	↔	↑	57
Thu, May 23,	\$2,337	-\$56	\$2,387	↔	\$2,356	↔	\$2,351	↑↑	↑	61
Wed, May 22,	\$2,393	-\$33	\$2,387	↔	\$2,357	↔	\$2,348	↑	↑	64
% Pos. Closes /5	Mon	Tues	Wed	Thurs	Fri					
Prior 50 Days	#VALUE!	#VALUE!	#VALUE!	#VALUE!	#VALUE!					

Rolling 15 Year Chart: Month Ending Price of Active Contract



Rolling 50 Day Chart



/ 1 Prior prices may reflect different contracts when there is a transition to the status of "Active Contract".

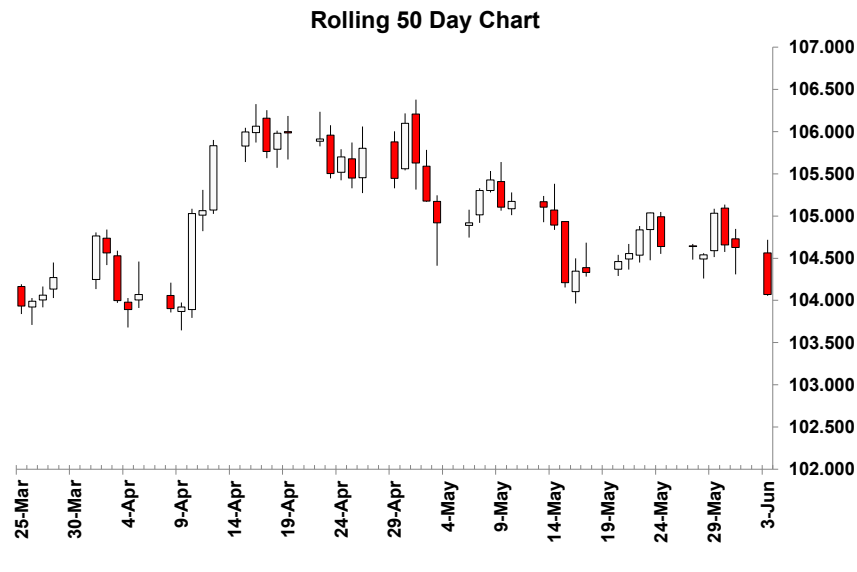
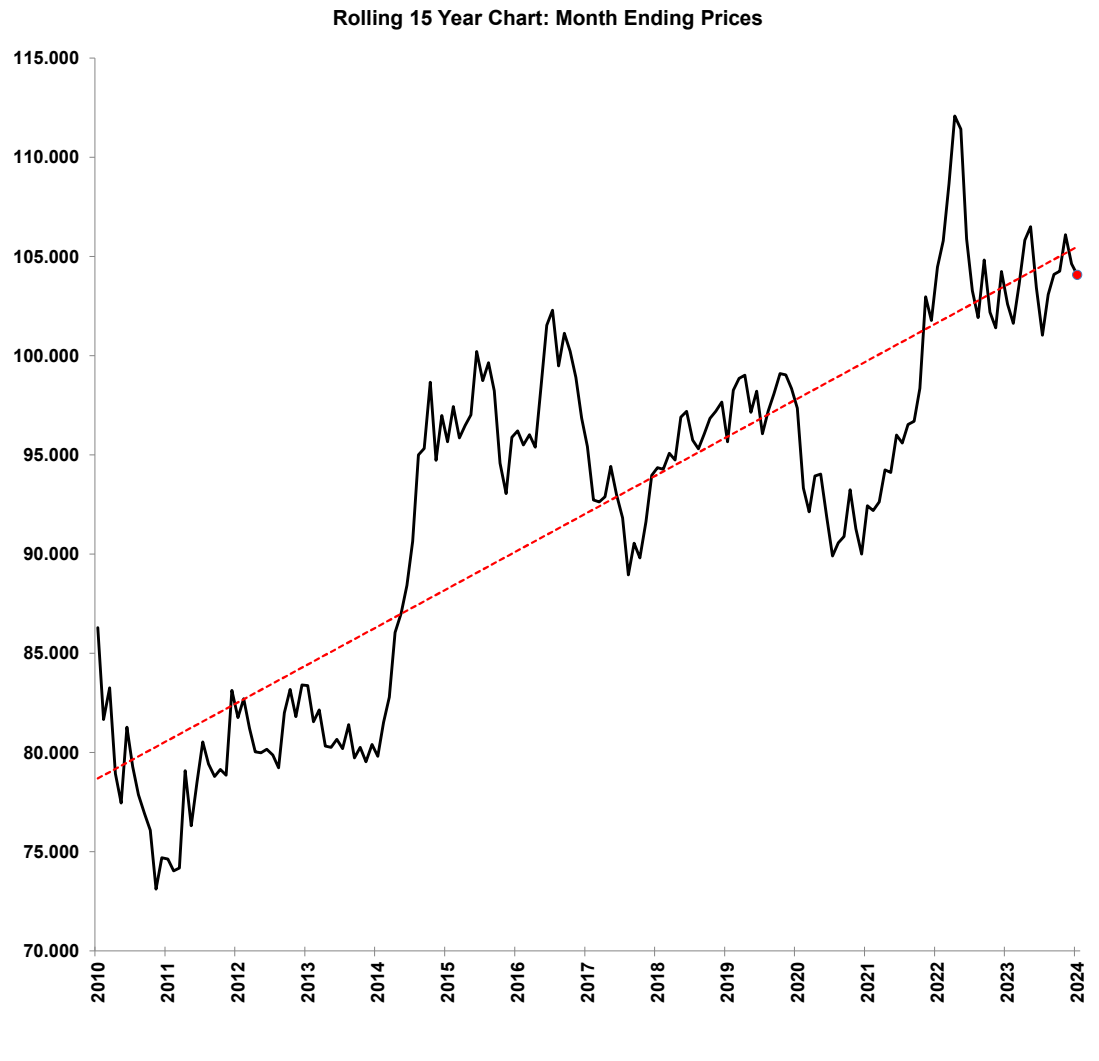
/ 2 Indicators of the simple moving averages (10, 20, & 40 day) are horizontal unless the trend is statistically significant. (critical t value is 95 percentile)

/ 3 Proprietary indicator implying if the price trend is upward, downward or insignificant.

/ 4 Relative Strenght Index (RSI) can indicate potential highs or lows of a trading range when the price trend is not significant. (RSI of 30 is low & 70 high)

/ 5 Percentile of positive closes on particular weekdays. (prior 50 days)

	Close /1	Change	10 MA /2	/2	20 MA /2	/2	40 MA /2	/2	/3	RSI /4
Mon, Jun 03,	104.070	-0.557	104.663	↔	104.749	↓	105.130	↔	↔	46
Fri, May 31,	104.627	-0.031	104.702	↔	104.791	↔	105.125	↔	↔	48
Thu, May 30,	104.658	-0.376	104.673	↔	104.806	↔	105.112	↔	↓	47
Wed, May 29,	105.034	0.495	104.641	↑	104.832	↔	105.092	↔	↓	48
Tue, May 28,	104.539	-0.099	104.559	↔	104.862	↓	105.066	↔	↓	48
Mon, May 27,	104.638	0.000	104.594	↔	104.940	↓	105.067	↔	↓	48
Fri, May 24,	104.638	-0.398	104.641	↔	104.980	↔	105.070	↔	↓	47
Thu, May 23,	105.036	0.200	104.695	↔	105.039	↔	105.061	↔	↓	46
Wed, May 22,	104.836	0.280	104.701	↔	105.059	↔	105.037	↔	↓	44
% Pos. Closes /5	Mon	Tues	Wed	Thurs	Fri					
Prior 50 Days	45%	70%	60%	50%	44%					



/ 1 Prior prices may reflect different contracts when there is a transition to the status of "Active Contract".

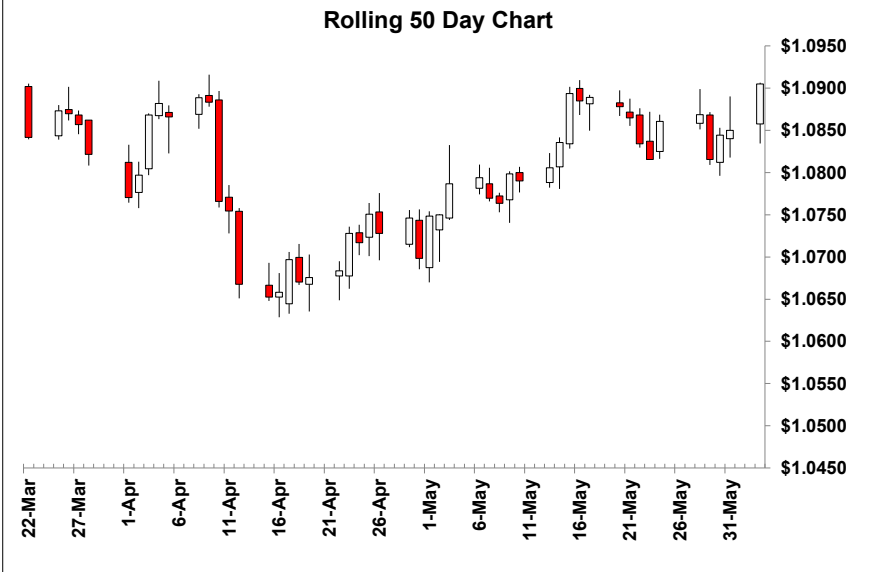
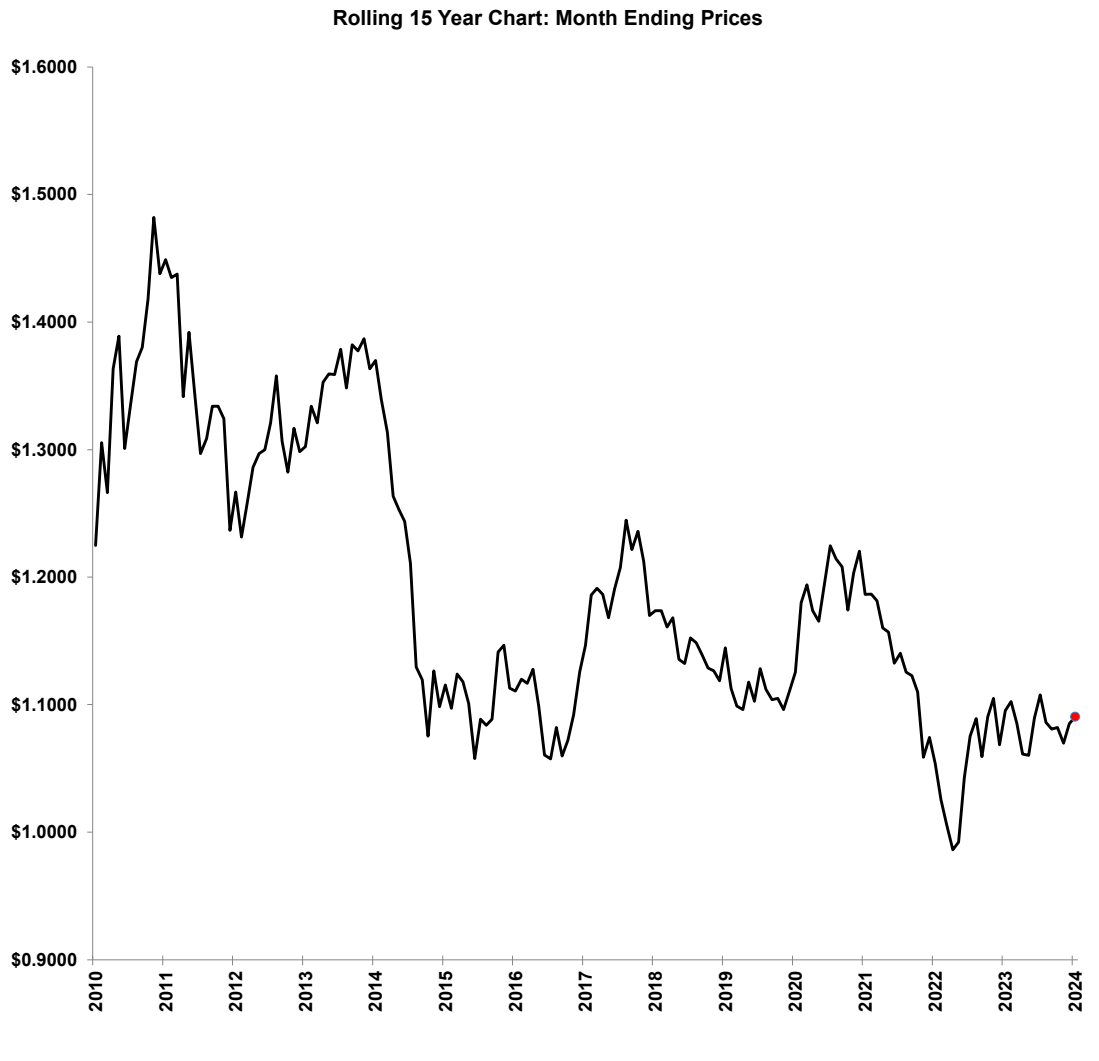
/ 2 Indicators of the simple moving averages (10, 20, & 40 day) are horizontal unless the trend is statistically significant. (critical t value is 95 percentile)

/ 3 Proprietary indicator implying if the price trend is upward, downward or insignificant.

/ 4 Relative Strenght Index (RSI) can indicate potential highs or lows of a trading range when the price trend is not significant. (RSI of 30 is low & 70 high)

/ 5 Percentile of positive closes on particular weekdays. (prior 50 days)

	Close /1	Change	10 MA /2	/2	20 MA /2	/2	40 MA /2	/2	/3	RSI /4
Mon, Jun 03,	1.0905	0.0055	1.0854	↔	1.0838	↑	1.0785	↔	↔	55
Fri, May 31,	1.0850	0.0006	1.0852	↔	1.0832	↔	1.0784	↔	↑	55
Thu, May 30,	1.0845	0.0029	1.0856	↔	1.0827	↑	1.0785	↔	↑	54
Wed, May 29,	1.0816	-0.0053	1.0860	↓	1.0822	↔	1.0786	↔	↑	54
Tue, May 28,	1.0869	0.0008	1.0862	↔	1.0816	↑	1.0785	↔	↑	56
Fri, May 24,	1.0861	0.0045	1.0856	↔	1.0810	↔	1.0783	↔	↑	57
Thu, May 23,	1.0816	-0.0018	1.0849	↔	1.0804	↔	1.0782	↔	↑	58
Wed, May 22,	1.0834	-0.0031	1.0847	↔	1.0800	↔	1.0783	↔	↑	61
Tue, May 21,	1.0865	-0.0013	1.0840	↔	1.0795	↑	1.0784	↔	↑	63
% Pos. Closes /5	Mon	Tues	Wed	Thurs	Fri					
Prior 50 Days	70%	50%	40%	50%	50%					



/ 1 Prior prices may reflect different contracts when there is a transition to the status of "Active Contract".

/ 2 Indicators of the simple moving averages (10, 20, & 40 day) are horizontal unless the trend is statistically significant. (critical t value is 95 percentile)

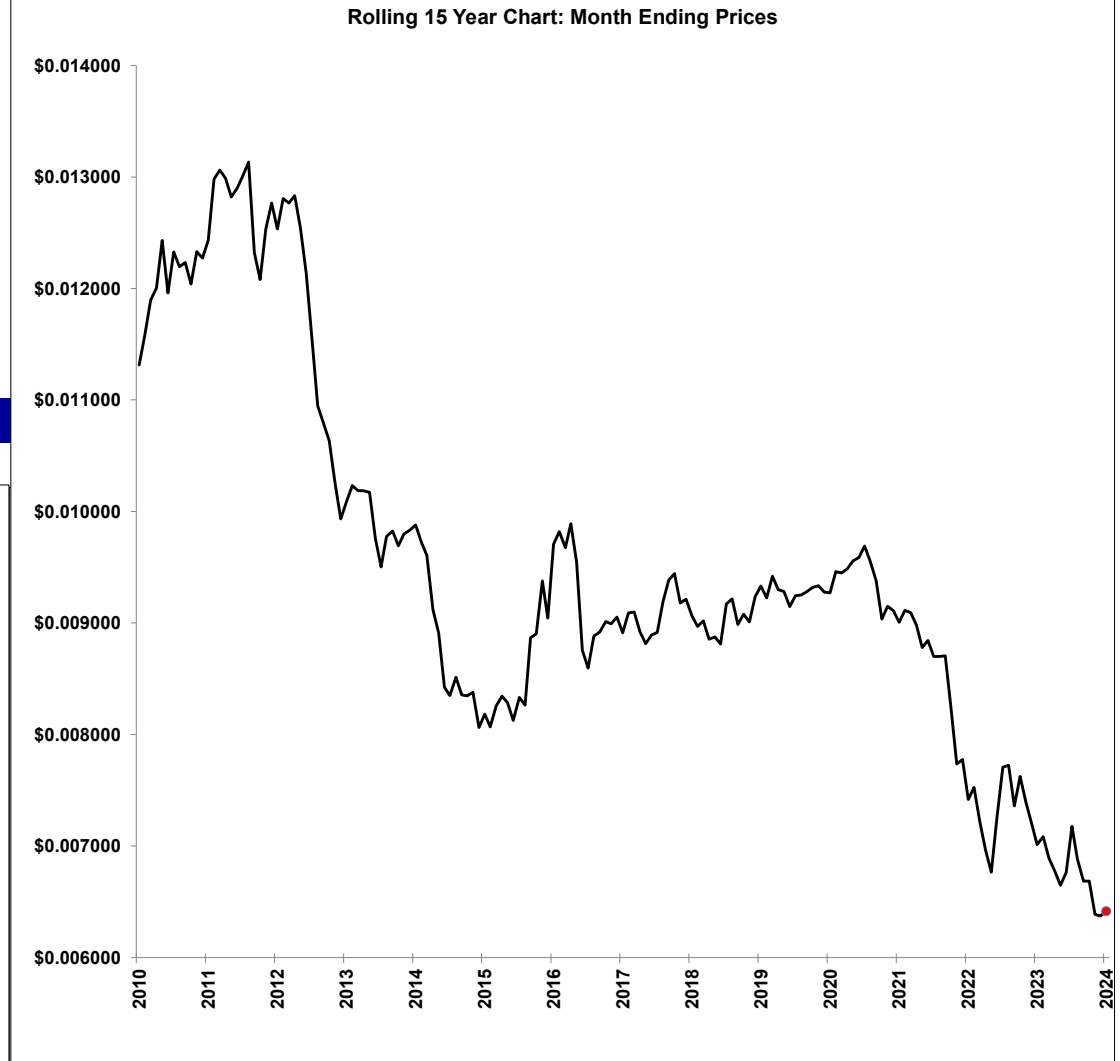
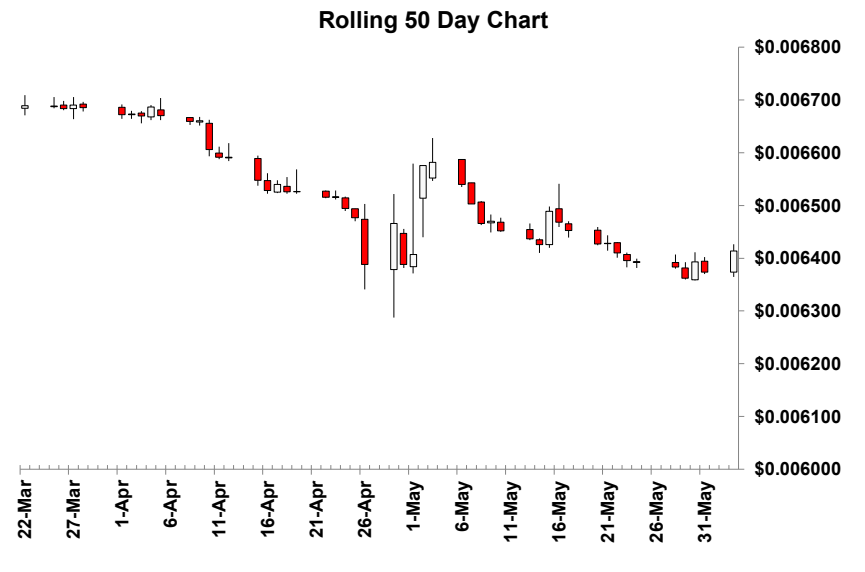
/ 3 Proprietary indicator implying if the price trend is upward, downward or insignificant.

/ 4 Relative Strenght Index (RSI) can indicate potential highs or lows of a trading range when the price trend is not significant. (RSI of 30 is low & 70 high)

/ 5 Percentile of positive closes on particular weekdays. (prior 50 days)

	Close /1	Change	10 MA /2	20 MA /2	40 MA /2	/3	RSI /4
Mon, Jun 03,	0.006414	0.000040	0.006398 ↔	0.006434 ↓	0.006482 ↓	↓	38
Fri, May 31,	0.006374	-0.000020	0.006402 ↓	0.006443 ↓	0.006488 ↓	↓	37
Thu, May 30,	0.006393	0.000031	0.006411 ↓	0.006453 ↓	0.006496 ↓	↓	37
Wed, May 29,	0.006362	-0.000022	0.006421 ↓	0.006453 ↔	0.006503 ↓	↓	36
Tue, May 28,	0.006384	-0.000009	0.006427 ↔	0.006455 ↔	0.006511 ↓	↓	38
Fri, May 24,	0.006393	-0.000003	0.006433 ↔	0.006459 ↔	0.006518 ↓	↓	39
Thu, May 23,	0.006396	-0.000014	0.006439 ↔	0.006459 ↔	0.006525 ↓	↓	40
Wed, May 22,	0.006410	-0.000019	0.006446 ↓	0.006463 ↔	0.006533 ↓	↓	41
Tue, May 21,	0.006429	0.000001	0.006452 ↔	0.006467 ↔	0.006539 ↓	↓	43

% Pos. Closes /5	Mon	Tues	Wed	Thurs	Fri
Prior 50 Days	20%	40%	40%	40%	40%



/ 1 Prior prices may reflect different contracts when there is a transition to the status of "Active Contract".

/ 2 Indicators of the simple moving averages (10, 20, & 40 day) are horizontal unless the trend is statistically significant. (critical t value is 95 percentile)

/ 3 Proprietary indicator implying if the price trend is upward, downward or insignificant.

/ 4 Relative Strength Index (RSI) can indicate potential highs or lows of a trading range when the price trend is not significant. (RSI of 30 is low & 70 high)

/ 5 Percentile of positive closes on particular weekdays. (prior 50 days)